

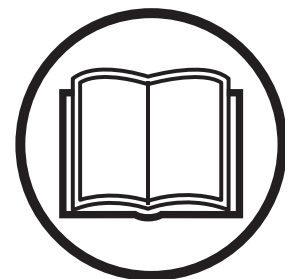


Husqvarna®



**Operator's manual**

# **A-Line Air Scrubber A 600, A 1200**



Please read the operator's manual carefully and make sure you understand the instructions before using the machine.

**US**

# Introduction

## Notice!

These instructions are only for the air scrubber type Husqvarna A 600 / A 1200.

The air scrubber, Husqvarna A 600 / A 1200 can only be used with dry, non-explosive materials.

Husqvarna not be held responsible if the air scrubber is used for other applications or has been used in ways other than those outlined in this instruction manual.

Before using the machine, please read the safety regulations carefully.

Read the complete instruction manual before using the Husqvarna A 600 / A 1200.

All spare parts used for the Husqvarna A 600 / A 1200 must those specified by Husqvarna Construction Products.

## Type plate



**Air Cleaner  
A600**



CONFORMS TO UL STD.1017  
CERTIFIED TO CSA STD.  
C22.2 No.243-10

110-130 V	?A
380 W	50/60Hz
?m <sup>3</sup> /h	19kg
S/n: YYYY WWXXXXX	
P/n: 987654321	

HUSQVARNA AB  
SE-561 82 HUSKVARNA  
SWEDEN

MADE IN CHINA



**Air Cleaner  
A1200**



CONFORMS TO UL STD.1017  
CERTIFIED TO CSA STD.  
C22.2 No.243-10

110-130 V	?A
580 W	50/60Hz
?m <sup>3</sup> /h	38kg
S/n: YYYY WWXXXXX	
P/n: 987654321	

HUSQVARNA AB  
SE-561 82 HUSKVARNA  
SWEDEN

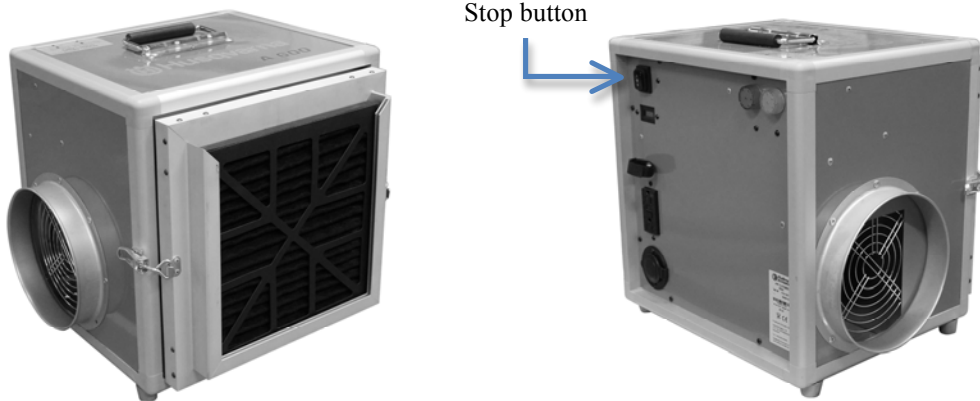
MADE IN CHINA

## Unpacking

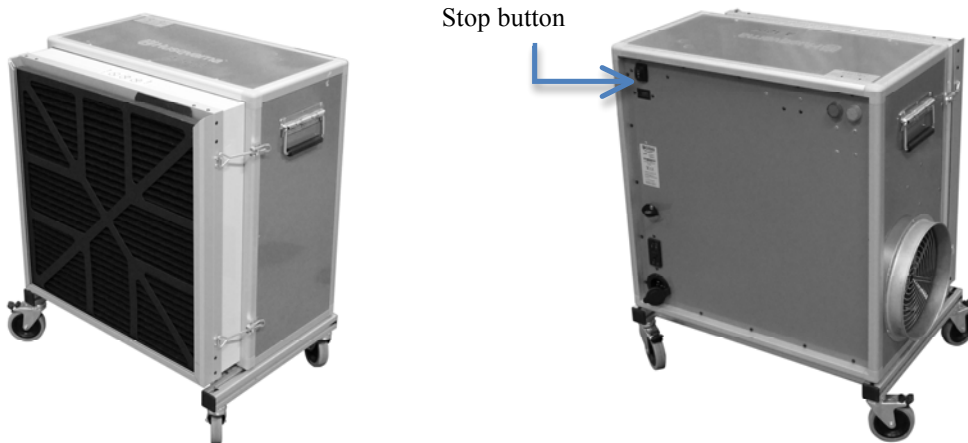
When unpacking the machine, please check that the air scrubber has not been damaged in transport.

## Product overview

### A 600



### A 1200



## Safety Instructions

### Handling

#### Warning

- Make sure that you read and understand the instructions for the main product to ensure that you know what personal equipment to wear, what safety equipment to use and how to work in a safe mode.

#### Warning

- Cables damaged through crushing or splitting can be dangerous if used and should be replaced immediately. Risk of personal injury.

#### Warning

- Do not connect the machine to an unearthed socket. Risk of personal injury.

#### Warning

- Make sure the assembly area is firm, so the air scrubber does not tip over. Risk of personal and material injury.

### **Warning**

- Risk of pinching when handling the toggle fastener.

### **Warning**

- The machine must not be used in environments where explosive gases may be present. Serious risk of explosion

### **Warning**

- The machine should be turned off at the switch before releasing the power lead from the wall outlet. If the switch is in the on position, a spark can occur between the contact on the power lead contact.

## **Service**

### **Warning**

- Remove the plug from the wall socket when carrying out maintenance work. Risk of personal injury.

### **Warning**

- Dust that is hazardous to health can be spread when the coarse filter and the absolute filter are replaced. Accordingly, the user should wear protective glasses, protective gloves, and a breathing mask conforming to protection class FFP2

### **Warning**

- Do not puncture the absolute filter. Risk of dust dispersion.

## **Function**

Connect the lead to the power outlet, attach the outlet hose if available. Start the machine by pressing the start knob. The air scrubber has two speeds.

The air scrubber separates material in two stages:

The first stage uses a coarse filter. This traps the bigger particles and acts as protection for the main filter. The coarse filter should be changed on a daily basis.

The second absolute filter separates the unhealthy dust that is invisible to the eye.

### **Coarse filter characteristics**

The coarse filter is strong and easy to change. It has low pressure drop and good separation capability. The coarse filter takes care of big particles and acts as protection for the absolute filter.

### **Main filter characteristics**

The main filter is an absolute filter with class HEPA H13 that is dimensioned for fine, dry dust and should be preceded by a pre-filter.

#### **Caution**

- The operating life of the absolute filter decreases and can be completely destroyed if exposed to water.

#### **Caution**

- The absolute filters cannot be cleaned and must be replaced when full.

## Filter indicator

A 600 / A 1200 has two filter indicators connected to a warning light which measures the pressure drop over the filter. If the pressure drop is too high, a yellow lamp light up, indicating that the pre-filter should be changed. When the Yellow light stays on even after a pre-filter change. It is time to Change the HEPA filter. Using the air scrubber when light is showing will reduce the effectiveness of the machine. When the pressuredrop is too low, a red lamp will light up, indicating that the Hepa filter is leaking/damaged and needs to be replaced immediately.

Please note that the filter indicators only does work at full speed.

Recommended intervals for filter change: Socks filter every 6 months and Hepa filter every 12 month.

## Fan

The air scrubber is equipped with a single, 1 phase fan.

### **Risk of dust dispersion - Use of personal safety equipment**

**Unhealthy dust can be spread when cleaning the coarse filter and during filter change.**

**Accordingly, the user should wear protective glasses, protective gloves, and a breathing mask conforming to protection class FFP2.**

## Accessories

<b>PART NO.</b>	<b>DESCRIPTION</b>	<b>No./machine</b>	<b>Machine</b>
590430001	Pre-filter 20-pcs	1 ea	A 600
590460801	HEPA filter	1 ea	A 600
590430002	Pre-filter 20-pcs	1 ea	A 1200
590463201	HEPA filter	1 ea	A 1200

Contact your local representative for other spare parts.

## Warranty

All Husqvarna devices and accessories have a 12-month factory warranty from the date of purchase for material and manufacturing defects. Do not attempt to repair the suction apparatus without the consent of the manufacturer.

The warranty does not cover defects which are the result of normal wear and tear, negligence, defective use, unauthorised repair or the suction apparatus being connected to the incorrect voltage. In the event of any complaint, the suction apparatus or an agreed part of it must be returned to us or our authorised representative for warranty examination and for any warranty repair or replacement.

## PROBLEM SOLVING

The A 600 / A 1200 is designed and manufactured for severe environments and tasks, but the user must note that the machine components must be protected from knocks and blows. Filter and sealing connections are carefully chosen to serve the operator. Therefore, the machine must be handled with care if it is to work correctly for many years.

<b>Problem</b>	<b>Cause</b>	<b>Procedure</b>
The fan does not start	No power Cable defective Switch defective	Connect the machine Change Change
The fan stops immediately	Wrong fuse	Connect the correct fuse
The fan runs, but suction is poor	Blocked filter Cover loose Sealing defect	Change filter Adjust Change current seal
Dust blows from unit	Defective or loose filter	Adjust or change
Abnormal noise		Order service

**Keep these instructions!**

## TECHNICAL DATA

<b>Air scrubber</b>	<b>A 600</b>	<b>A 1200</b>
Power	0,385 kW / 0,5 HP	0,585 kW / 0,8 HP
Voltage	120	120 V
Current	3,2 A	4,9 A
Power supply	1-phase	1-phase
Airflow	500/1000 m <sup>3</sup> /h / 300-600 CFM	1000/2000 m <sup>3</sup> /h / 600/1200 CFM
HEPA FILTER	Filter classification: H13	Filter classification: H13
Filter Area	3,5 m <sup>2</sup> / 60 ft <sup>2</sup>	10,5 m <sup>2</sup> / 150 ft <sup>2</sup>
Dimension LxWxH	mm: 465x385x466 in: 18,3x15,1x18,3	mm: 724x424x810 in: 28,5x16,7x31,9
Weight	20 kg / 44 lbs	38 kg / 84 lbs





[www.husqvarnacp.com](http://www.husqvarnacp.com)

**Original instructions**

**1158768-95**

**2017-04-26**



## Free Manuals Download Website

<http://myh66.com>

<http://usermanuals.us>

<http://www.somanuals.com>

<http://www.4manuals.cc>

<http://www.manual-lib.com>

<http://www.404manual.com>

<http://www.luxmanual.com>

<http://aubethermostatmanual.com>

Golf course search by state

<http://golfingnear.com>

Email search by domain

<http://emailbydomain.com>

Auto manuals search

<http://auto.somanuals.com>

TV manuals search

<http://tv.somanuals.com>