

The latest manuals and FAQ are available at the Brother Solutions Center: [support.brother.com](http://support.brother.com)

Not all models are available in all countries.

Thank you for choosing Brother. Your support is important to us and we value your business. Your Brother product is engineered and manufactured to the highest standards to deliver reliable performance, day-in and day-out.

**Please read the Product Safety Guide before you set up your machine.**

## WARNING

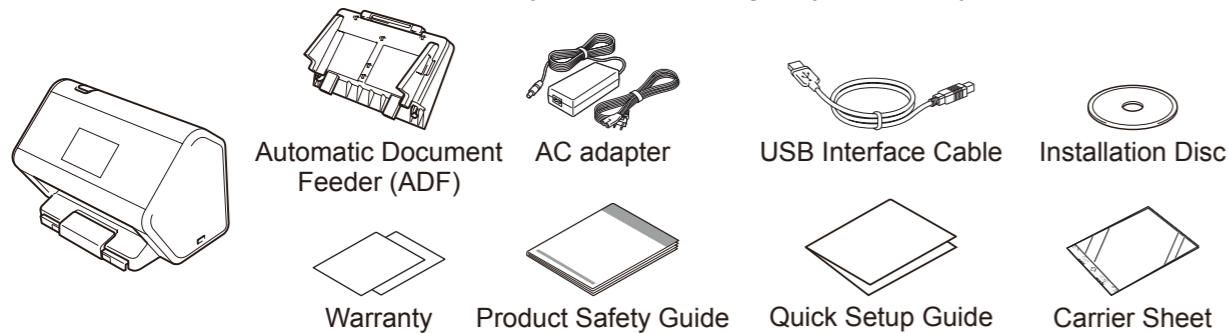
**WARNING** indicates a potentially hazardous situation which, if not avoided, could result in death or serious injuries.

## NOTE

Unless otherwise specified, illustrations in this guide show the ADS-3600W.

## 1 Unpack the machine and check the components

The components included in the box may differ depending on your country.



## NOTE

Depending on your connection method, you may need a LAN cable (not included).

## WARNING

- This product is packaged in a plastic bag. To avoid suffocation, keep plastic bags away from babies and children. Do not use the bag in cribs, beds, carriages, or play pens. The bag is not a toy.
- Use only the AC adapter supplied with this product.

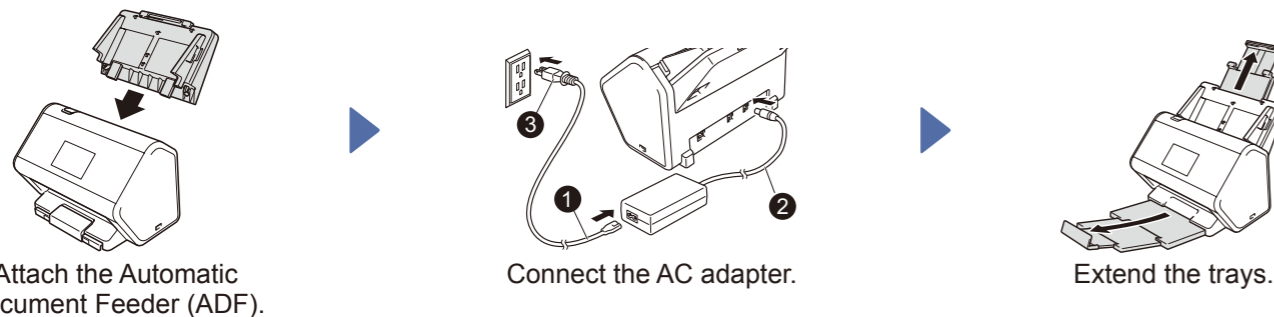
## NOTE

- We recommend saving the original packaging in case you must ship your machine.
- Use the supplied USB cable if you want to connect the machine to a computer.

### For Network Users

Best practice is to configure a unique admin password for any network device. Your machine's default password is on the back of the machine (the eight-digit character string marked "Pwd"). We recommend changing this default password immediately in order to use network tools/utilities securely.

## 2 Connect the power cord



## 3 Select your language, if needed (Touchscreen models only)

- On the machine's Touchscreen, press .
- Press or and select Initial Setup.
- Press Local Language.
- Press or and select your language.
- Press .

## 4 Connect your machine and install software

Select your preferred scanning method.

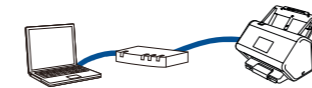
If you are using ADS-2400N or ADS-3000N, you cannot connect to the network through WiFi.

### Using your scanner with your computer

#### WiFi connection to Network



#### LAN cable to Network



#### USB cable to computer



### Using your scanner with your mobile device

#### WiFi connection to Network



- If you have a PC that is connected to the network
- If you don't have a PC that is connected to the network

#### LAN cable to Network



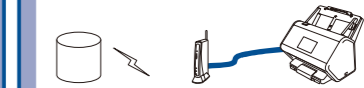
### Using your scanner as a standalone device

#### WiFi connection to Network



- If you have a PC that is connected to the network
- If you don't have a PC that is connected to the network

#### LAN cable to Network



## A Using your scanner with your computer

### Windows® computer with DVD drive

**NOTE:**  
If the Brother screen does not appear automatically, click (Start) > Computer (My Computer).  
(For Windows® 8/8.1/10: click the (File Explorer) icon on the taskbar, and then go to This Computer / This PC.)  
Double-click the DVD icon, and then double-click **start.exe**.



Follow the on-screen instructions to continue installation.

**Finish**

**NOTE:** When finished, restart your computer

### Macintosh and Windows® computer without DVD drive

Download the full driver and software package from the Brother Solutions Center.  
[support.brother.com](http://support.brother.com)



## B Using your scanner with your mobile device or as a standalone device (WiFi connection to network)

- > Setup Wizard > Yes.
- Select the SSID.  
Enter the Network key.
- The LCD displays Connected.

If you are using your scanner with your mobile device

If you are using your scanner as a standalone device

Please download Brother iPrint&scan to start using your scanner with your mobile device(s). Go to FAQ for download and installation of the application.

[solutions.brother.com/ips](http://solutions.brother.com/ips)



**Finish**

**Finish**

## NOTE

If you cannot find the SSID, ask your network administrator or wireless access point/router manufacturer.

## C Using your scanner with your mobile device (LAN cable to Network)

Connect your machine to your Network using a LAN cable.



Please download Brother iPrint&scan to start using your scanner with your mobile device(s). Go to FAQ for download and installation of the application.  
[solutions.brother.com/ips](http://solutions.brother.com/ips)

**Finish**

## D Using your scanner as a standalone device (LAN cable to Network)

Connect a LAN cable to your machine.

**Finish**

## Free Manuals Download Website

<http://myh66.com>

<http://usermanuals.us>

<http://www.somanuals.com>

<http://www.4manuals.cc>

<http://www.manual-lib.com>

<http://www.404manual.com>

<http://www.luxmanual.com>

<http://aubethermostatmanual.com>

Golf course search by state

<http://golfingnear.com>

Email search by domain

<http://emailbydomain.com>

Auto manuals search

<http://auto.somanuals.com>

TV manuals search

<http://tv.somanuals.com>