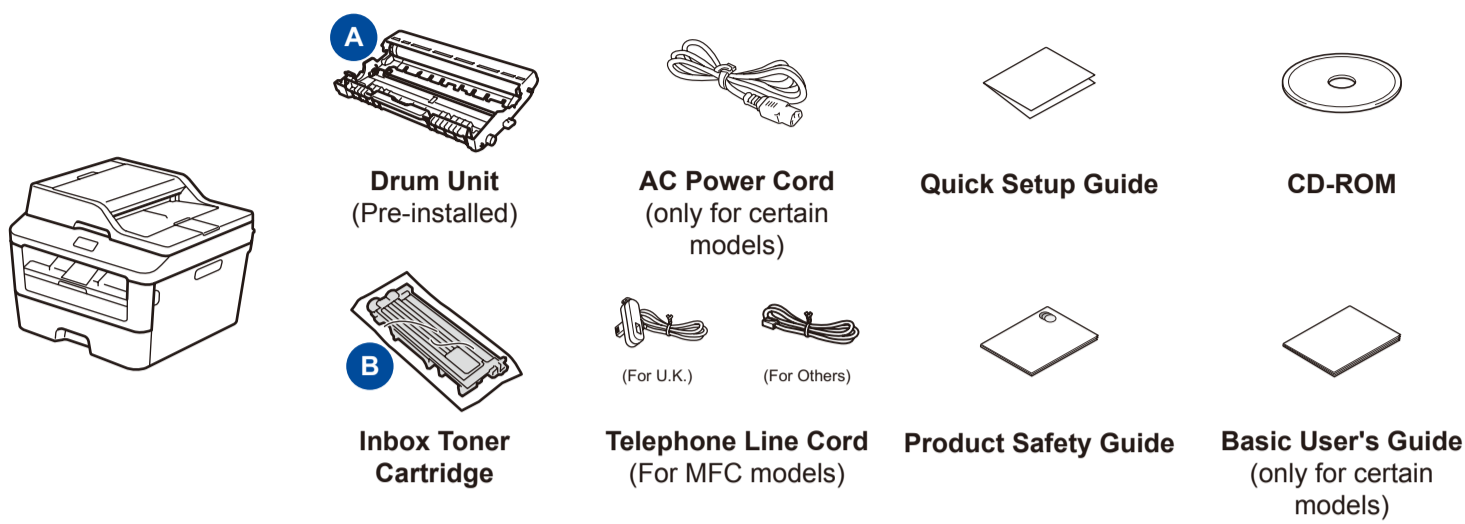




Unpack the machine and check the components



Read the Product Safety Guide first, then read this Quick Setup Guide for the correct installation procedure.

NOTE:

- The components included in the box and the AC power plug may differ depending on your country.
- The illustrations in this Quick Setup Guide are based on the MFC-L2700DW.
- You must purchase the correct interface cable for the interface you want to use.

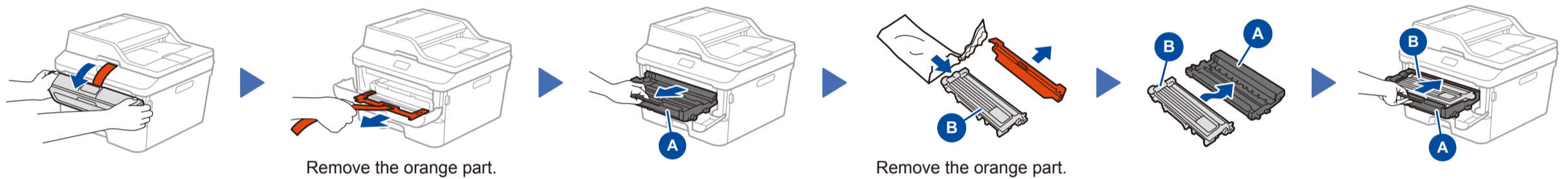
USB cable

We recommend using a USB 2.0 cable (Type A/B) that is no more than 2 metres long.

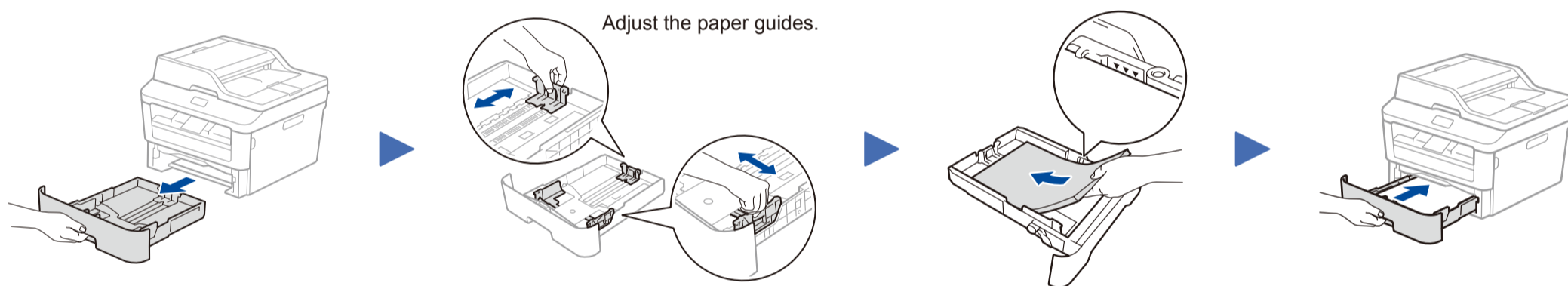
Network cable

Use a straight-through Category 5 (or greater) twisted-pair cable for 10BASE-T or 100BASE-TX Fast Ethernet Network.

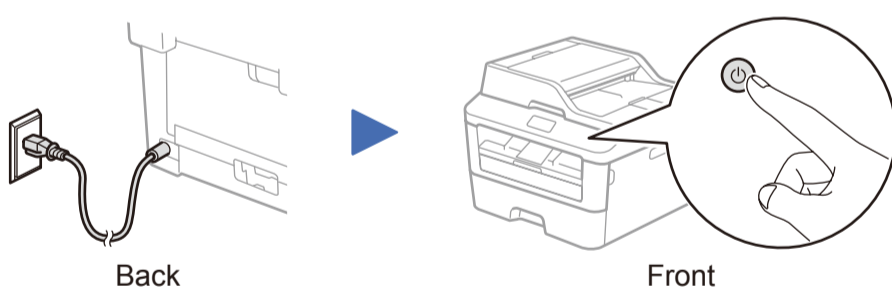
1 Remove the packing materials and install the toner cartridge



2 Load paper in the paper tray



3 Connect the power cord and turn on the machine



4 Select your country/language (Initial setup only)

After turning on the machine, you may be required to set your country or language (depending on your machine). If required, follow the on-screen instructions.

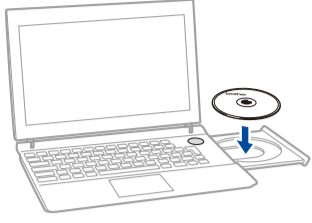
5 Select your language (If needed) (Only for certain models)

1. (DCP model)
 - a. Press **Menu**.
 - b. Press **▲** or **▼** to display *General Setup*, and then press **OK**.
 - c. Press **▲** or **▼** to display *Local Language*, and then press **OK**.
 (MFC model) Press **Menu**, **0**, **0**.
2. Press **▲** or **▼** to select your language, and then press **OK**.
3. Press **Stop/Exit**.

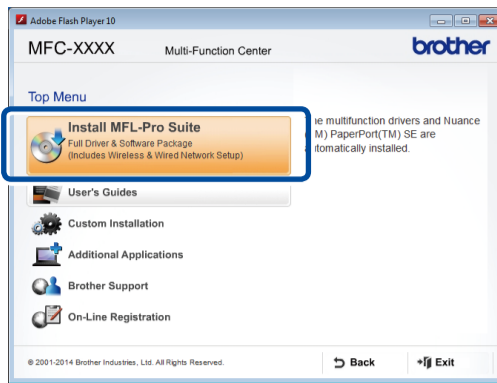
6 Connect the machine to your computer/mobile device

- Windows® PC with a CD-ROM drive, go to step **6A**
- Windows® PC without a CD-ROM drive, go to step **6B**
- Macintosh, go to step **6B**
- Mobile device users with a WPS/AOSS™-supported access point/router, go to step **6C**



**NOTE:**

If the Brother screen does not appear automatically, go to **Computer (My Computer)**. (For Windows® 8: click the **File Explorer** icon on the taskbar, and then go to **Computer**.) Double-click the CD-ROM icon, and then double-click **start.exe**.

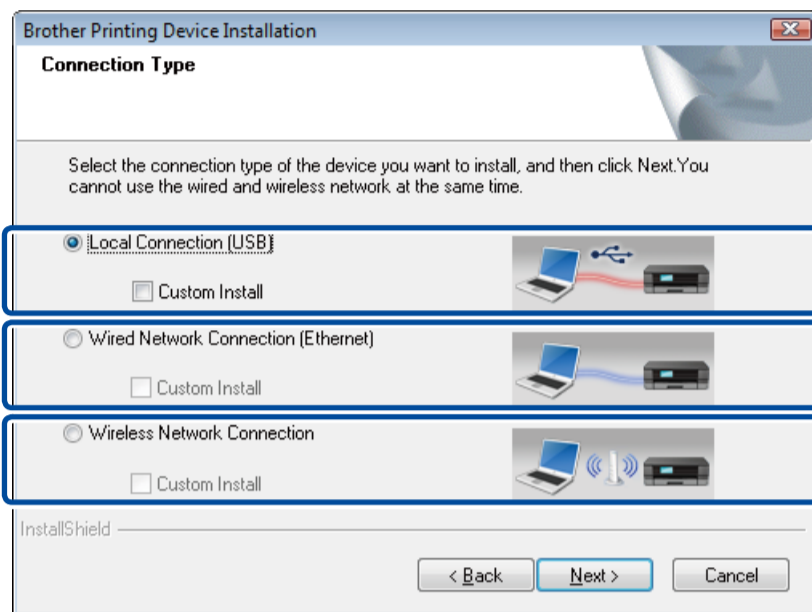


Follow the on-screen instructions to continue installation until either the **Connect the machine** or the **Connection Type** screen appears.

■ **Connect the machine:** Follow the on-screen instructions to continue installation.

■ **Connection Type:**

Finish

Connection Type

For USB Connection

For Wired Network Connection
Connect a network cable first.

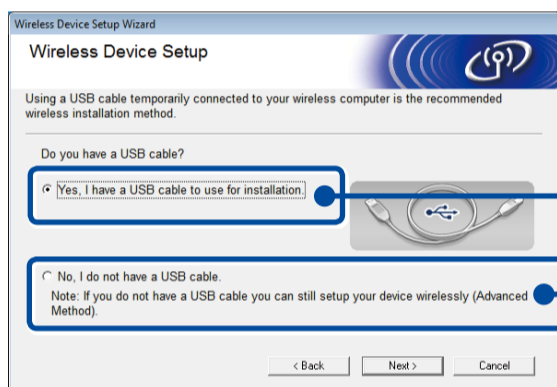
For Wireless Network Connection
We recommend preparing a USB cable to use temporarily during the wireless setup.

Follow the on-screen instructions to continue installation.

Finish

NOTE:

If connection is unsuccessful, repeat this step.

**Wireless Network Connection****[Recommended]**

Select this option if you have a USB cable to use temporarily for wireless setup.

Select this option if you do not have a USB cable.

Follow the on-screen instructions to continue installation.

Finish

NOTE:

If connection is unsuccessful, repeat this step.



Download the full driver and software package from the Brother Solutions Center.

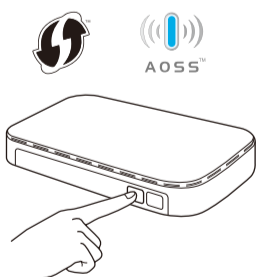
(For Windows®) solutions.brother.com/windows

(For Macintosh) solutions.brother.com/mac

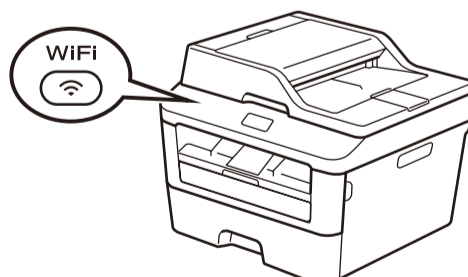
After you download the driver and software package, follow the on-screen instructions until the **Connection Type** screen appears. Refer to **6A Configuration using the CD-ROM (Windows®)**.



If your wireless LAN access point/router supports automatic wireless (one-push) setup (WPS/AOSS™), you can set up your machine without using a computer.



Press the WPS or AOSS™ button on your wireless LAN access point/router.



Press the **WiFi** button on your machine.

Wireless setup is now complete.

NOTE:

Before you can use your machine with your mobile device, download "Brother iPrint&Scan."



Print and scan using your mobile device

Download "Brother iPrint&Scan" to start using your machine with mobile devices.



solutions.brother.com/ips

Free Manuals Download Website

<http://myh66.com>

<http://usermanuals.us>

<http://www.somanuals.com>

<http://www.4manuals.cc>

<http://www.manual-lib.com>

<http://www.404manual.com>

<http://www.luxmanual.com>

<http://aubethermostatmanual.com>

Golf course search by state

<http://golfingnear.com>

Email search by domain

<http://emailbydomain.com>

Auto manuals search

<http://auto.somanuals.com>

TV manuals search

<http://tv.somanuals.com>