

Power/Transfer (green)

- Steady..... Camera is properly seated in the Camera Dock
- Blinking..... Pictures transferring to computer

Battery Charging (green)

- ○ ○ No charging
- ○ ○ Battery low
- ● ○ Battery partially charged
- ● ● Battery fully charged

Error (red blinking)

- ○ ○

Kodak EasyShare Camera Dock II

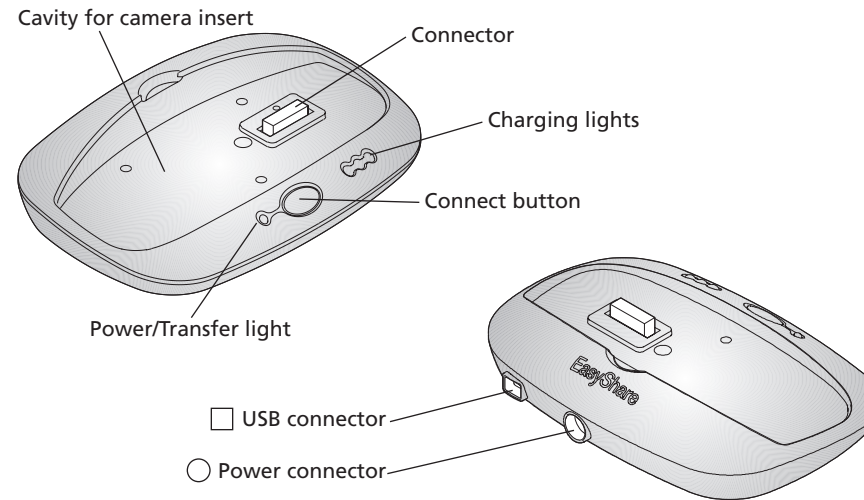


Quick Start Guide

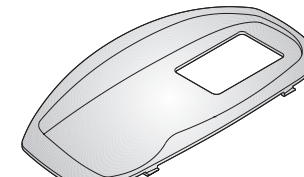
For details, see your KODAK EASYSHARE Camera User's Guide.

6B8006

Camera Dock Contents

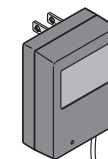


Universal camera insert

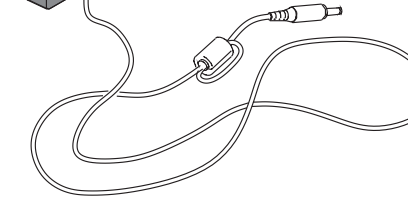


Works with all KODAK EASYSHARE Cameras

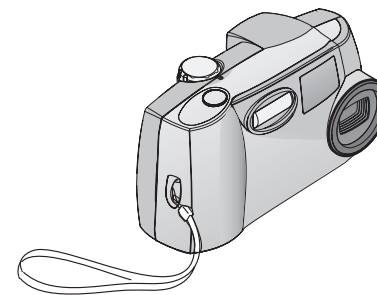
AC Adapter



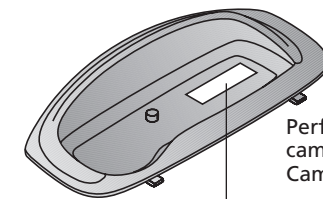
KODAK EASYSHARE Ni-MH Rechargeable Battery Pack



EASYSHARE Camera Contents



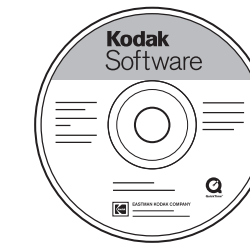
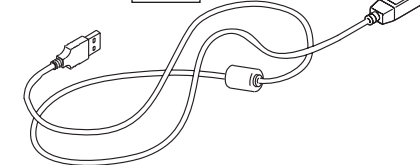
Custom camera insert



Perfectly fits camera to Camera Dock

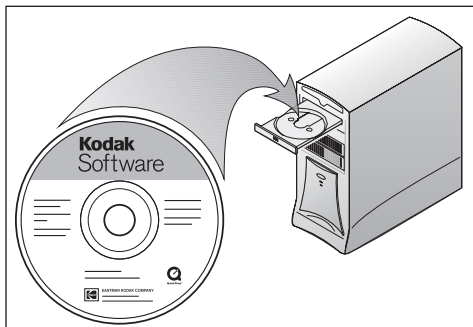
Connector clearance hole

USB



1 First! Install Software

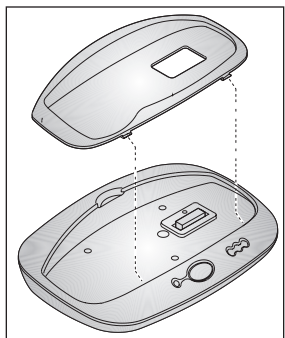
BEFORE connecting Camera Dock to computer



KODAK EASYSHARE Software CD included with camera.

NOTE: Some software installation unnecessary for MACINTOSH OS X users. See camera User's Guide.

2 Install Camera Insert

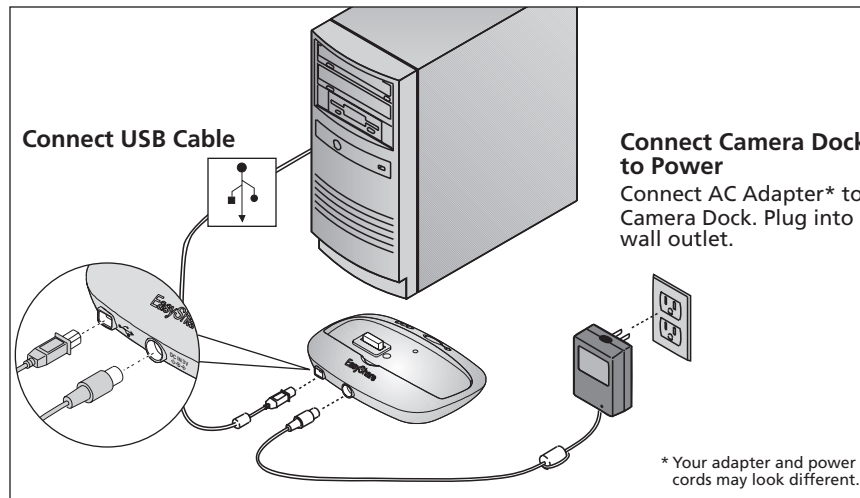


Use custom camera insert (included with camera). If unavailable, use universal camera insert (included with Camera Dock).

To order a custom insert for your camera go to www.kodak.com/go/accessories.

3 Connect Camera Dock

Leave connected for easy access.



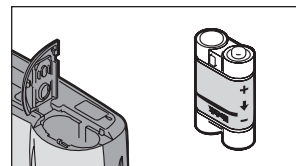
Connect USB Cable

Connect Camera Dock to Power
Connect AC Adapter* to Camera Dock. Plug into wall outlet.

* Your adapter and power cords may look different.

4 Install Battery Pack

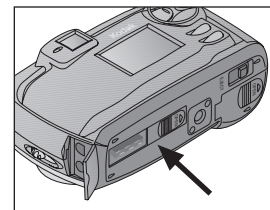
See camera User's Guide for details.



KODAK EASYSHARE Ni-MH Rechargeable Battery Pack is included with Camera Dock.

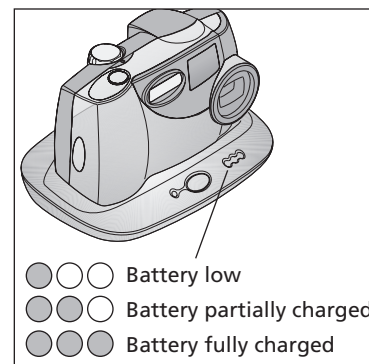
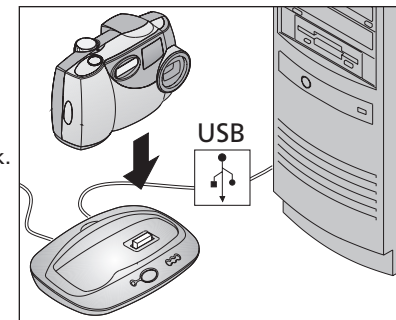
5 Charge Battery Pack

Only the KODAK EASYSHARE Ni-MH Rechargeable Battery Pack can be recharged by the Camera Dock.



Open Connector door.

Turn off camera, place in Camera Dock.



Charging starts immediately and takes about 2.5 hours.

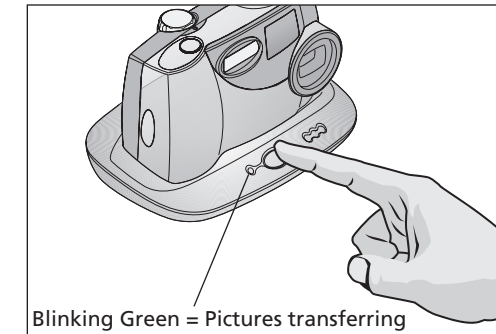
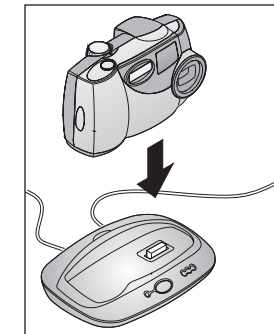
- Battery low
- Battery partially charged
- Battery fully charged

6 Take Pictures

See camera User's Guide.

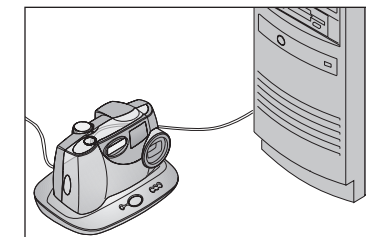
7 Transfer Pictures to Computer

Place camera in Camera Dock. Press the Connect button.



Blinking Green = Pictures transferring

8 Store Camera in Camera Dock



Keep your camera charged and ready to use.

Free Manuals Download Website

<http://myh66.com>

<http://usermanuals.us>

<http://www.somanuals.com>

<http://www.4manuals.cc>

<http://www.manual-lib.com>

<http://www.404manual.com>

<http://www.luxmanual.com>

<http://aubethermostatmanual.com>

Golf course search by state

<http://golfingnear.com>

Email search by domain

<http://emailbydomain.com>

Auto manuals search

<http://auto.somanuals.com>

TV manuals search

<http://tv.somanuals.com>