

# Panasonic®

## Installation Manual

Additional Digital Cordless Handset

Model No. **KX-TGA470**



DECT  
**6.0**

**Thank you for purchasing a Panasonic product.**

This unit is an additional handset compatible with the following series of Panasonic Digital Cordless Phone:  
KX-TG4731/KX-TG4741/KX-TG4751/KX-TG4761/  
KX-TG4771/KX-TG7731/KX-TG7741

(The corresponding models are subject to change without notice.)

You must register this handset with your base unit before it can be used. This installation manual describes only the steps needed to register and begin using the handset. Please read the base unit's operating instructions for further details.

**Charge the batteries for about 7 hours before initial use.**

Please read this installation manual before using the unit and save it for future reference.

For assistance, visit our Web site:  
<http://www.panasonic.com/help>  
for customers in the U.S.A. or Puerto Rico.

Printed in China



\*TGA470\*

**PNQX5093ZA** PT1111MG0 (D)

---

---

## Accessory information

---

### Supplied accessories

Accessory item/Order number	Quantity
Charger <sup>*1</sup>	1
AC adaptor/PNLV226Z	1
Rechargeable batteries/HHR-4DPA	2
Handset cover <sup>*2, *3</sup>	1
Belt clip <sup>*4</sup>	1

\*1 PNLC1029ZB: Black, PNLC1029ZS: Silver

\*2 PNYNTGA470BR: Black

\*3 The handset cover comes attached to the handset.

\*4 PNKE1132Z1: Black

**Note:**

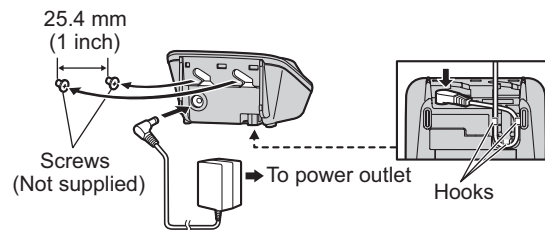
- Please read the base unit's operating instructions for additional/replacement accessories.
  - Optional headsets: KX-TCA60, KX-TCA93, KX-TCA400, KX-TCA430

---

2 For assistance, please visit <http://www.panasonic.com/help>

## Setting up

### Connections/Wall mounting



**Note:**

- Use only the supplied Panasonic AC adaptor PNLV226.
- The AC adaptor must remain connected at all times. (It is normal for the adaptor to feel warm during use.)
- Make sure that the wall and the fixing method are strong enough to support the weight of the unit.

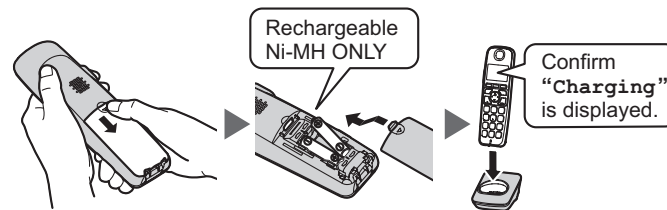
### Battery installation/Battery charging

**Important:**

- Use the supplied rechargeable batteries. For replacement, we recommend using the Panasonic rechargeable batteries noted on page 2.
- Wipe the battery ends ( $\oplus$ ,  $\ominus$ ) with a dry cloth.
- Avoid touching the battery ends ( $\oplus$ ,  $\ominus$ ) or the unit contacts.
- Confirm correct polarities ( $\oplus$ ,  $\ominus$ ).
- USE ONLY Ni-MH batteries AAA (R03) size.
- Do NOT use Alkaline/Manganese/Ni-Cd batteries.

Charge for about 7 hours.

- When the batteries are fully charged, “Fully charged” is displayed.



**Note:**

- If the batteries are fully charged, but the operating time seems to be shorter, clean the battery ends (+, -) and the charge contacts with a dry cloth and charge again.

---

## Registering a handset to a base unit

### 1 Base unit:

Press and hold **[LOCATOR]** for about 5 seconds.

- Depending on the base unit, a registration tone sounds.
- If all registered handsets start ringing, press **[LOCATOR]** again to stop, then repeat this step.

### 2 Handset:

Place the handset on the base unit or charger, then wait until a long beep sounds and **Y** is displayed.

**Note:**

- If an error tone sounds, or if **Y** is displayed, register the handset according to the base unit's operating instructions.

---

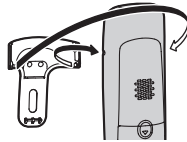
---

### Display language

- 1 [MENU] #110
  - 2 [↕]: Select the desired setting. → [SAVE]
  - 3 [OFF]
- 

### Belt clip

■ To attach



■ To remove



---

---

## For your safety

To prevent severe injury and loss of life/property, read this section carefully before using the product to ensure proper and safe operation of your product.

---

### WARNING

#### Power connection

- Completely insert the AC adaptor/power plug into the power outlet. Failure to do so may cause electric shock and/or excessive heat resulting in a fire.
- Regularly remove any dust, etc. from the AC adaptor/power plug by pulling it from the power outlet, then wiping with a dry cloth. Accumulated dust may cause an insulation defect from moisture, etc. resulting in a fire.
- Unplug the product from power outlets if it emits smoke, an abnormal smell, or makes an unusual noise. These conditions can cause fire or electric shock. Confirm that smoke has stopped emitting and contact the Panasonic Call Center at 1-800-211- PANA (1-800-211-7262).

#### Installation

- To prevent the risk of fire or electrical shock, do not expose the product to rain or any type of moisture.
- Do not place or use this product near automatically controlled devices such as automatic doors and fire alarms. Radio waves emitted from this product may cause such devices to malfunction resulting in an accident.

---

### CAUTION

#### Installation and location

- The AC adaptor is used as the main disconnect device. Ensure that the AC outlet is installed near the product and is easily accessible.

#### Battery

- We recommend using the supplied batteries or additional/replacement batteries noted on page 2 for replacement battery information. **USE ONLY rechargeable Ni-MH batteries AAA (R03) size.**
- Do not mix old and new batteries.
- Do not open or mutilate the batteries. Released electrolyte from the batteries is corrosive and may cause burns or injury to the eyes or skin. The electrolyte is toxic and may be harmful if swallowed.
- Exercise care when handling the batteries. Do not allow conductive materials such as rings, bracelets, or keys to touch the batteries, otherwise a short circuit

---

6 For assistance, please visit <http://www.panasonic.com/help>

may cause the batteries and/or the conductive material to overheat and cause burns.

- Charge the batteries provided with or identified for use with this product only, in accordance with the instructions and limitations specified in this manual.
- Only use a compatible base unit (or charger) to charge the batteries. Do not tamper with the base unit (or charger). Failure to follow these instructions may cause the batteries to swell or explode.

**Attention:**



A nickel metal hydride battery that is recyclable powers the product you have purchased. Please call 1-800-8-BATTERY (1-800-822-8837) for information on how to recycle this battery.

---

## Important safety instructions

When using your product, basic safety precautions should always be followed to reduce the risk of fire, electric shock, and injury to persons, including the following:

1. Do not use this product near water for example, near a bathtub, washbowl, kitchen sink, or laundry tub, in a wet basement or near a swimming pool.
2. Do not use the telephone to report a gas leak in the vicinity of the leak.
3. Use only the power cord and batteries indicated in this manual. Do not dispose of batteries in a fire. They may explode. Check with local codes for possible special disposal instructions.

**SAVE THESE INSTRUCTIONS**

---

## Other information

- Operating the product near electrical appliances may cause interference. Move away from the electrical appliances.

**CAUTION:** Risk of explosion if battery is replaced by an incorrect type. Dispose of used batteries according to the instructions.

**Routine care**

- **Wipe the outer surface of the product with a soft moist cloth.**
- Do not use benzine, thinner, or any abrasive powder.

---

For assistance, please visit <http://www.panasonic.com/help> 7

---

**Notice for product disposal, transfer, or return**

- This product can store your private/confidential information. To protect your privacy/confidentiality, we recommend that you erase information such as phonebook or caller list entries from the memory before you dispose of, transfer, or return the product.

---

**FCC and other information**

This equipment is hearing aid compatible as defined by the FCC in 47 CFR Section 68.316.

When you hold the phone to your ear, noise might be heard in your Hearing Aid. Some Hearing Aids are not adequately shielded from external RF (radio frequency) energy. If noise occurs, use an optional headset accessory or the speakerphone option (if applicable) when using this phone. Consult with your audiologist or Hearing Aid manufacturer about the availability of Hearing Aids which provide adequate shielding to RF energy commonly emitted by digital devices.

**WHEN PROGRAMMING EMERGENCY NUMBERS AND/OR MAKING TEST CALLS TO EMERGENCY NUMBERS:**

- 1) Remain on the line and briefly explain to the dispatcher the reason for the call.
- 2) Perform such activities in the off-peak hours, such as early morning or late evenings.

This device complies with Part 15 of the FCC Rules. Operation is subject to the following two conditions:

- (1) This device may not cause harmful interference, and (2) this device must accept any interference received, including interference that may cause undesired operation.

Privacy of communications may not be ensured when using this phone.

**CAUTION:**

Any changes or modifications not expressly approved by the party responsible for compliance could void the user's authority to operate this device.

**NOTE:**

This equipment has been tested and found to comply with the limits for a Class B digital device, pursuant to Part 15 of the FCC Rules. These limits are designed to provide reasonable protection against harmful interference in a residential installation. This equipment generates, uses, and can radiate radio frequency energy and, if not installed and used in accordance with the instructions, may cause harmful interference to radio communications. However, there is no guarantee that interference will not occur in a particular installation. If this

---

8 For assistance, please visit <http://www.panasonic.com/help>



equipment does cause harmful interference to radio or television reception, which can be determined by turning the equipment off and on, the user is encouraged to try to correct the interference by one or more of the following measures:

- Reorient or relocate the receiving antenna.
- Increase the separation between the equipment and receiver.
- Connect the equipment into an outlet on a circuit different from that to which the receiver is connected.
- Consult the dealer or an experienced radio/TV technician for help.

**FCC RF Exposure Warning:**

- This product complies with FCC radiation exposure limits set forth for an uncontrolled environment.
- This handset may not be collocated or operated in conjunction with any other antenna or transmitter.
- The handset may be carried and operated with only the specific provided belt-clip. Other non-tested belt-clips or similar body-worn accessories may not comply and must be avoided.

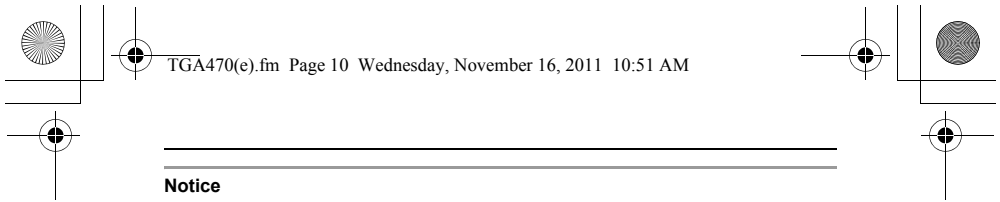
**Notice:**

- FCC ID can be found inside the battery compartment or on the bottom of the unit.

**Compliance with TIA-1083 standard:**

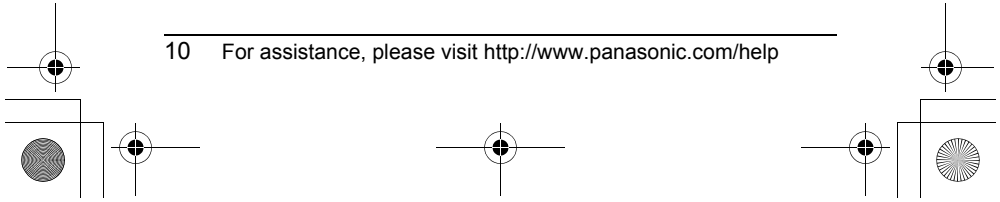


Telephone handsets identified with this logo have reduced noise and interference when used with T-Coil equipped hearing aids and cochlear implants.



**Notice**

- This product is designed for use in the United States of America. Sale or use of this product in other countries may violate local laws.
- Cet appareil est conçu pour être utilisé aux États-Unis d'Amérique. La vente ou l'emploi de cet appareil dans certains autres pays peut constituer une infraction à la législation locale.
- Este producto está diseñado para usarse en los Estados Unidos de América. La venta o el empleo de este producto en ciertos países puede constituir violación de la legislación local.
- 本產品專為美國使用而設。若在其他國家銷售或使用，可能會違反當地法例。
- この製品は、日本国外での使用を目的として設計されており、日本国内での使用は法律違反となります。従って、当社では日本国内においては原則として修理などのサービスは致しかねます。



## IMPORTANT!

If your product is not working properly. . .

- ① **Reconnect AC adaptor to the base unit.**
- ② **Check if telephone line cord is connected.**
- ③ **Use rechargeable Ni-MH batteries.**  
(Alkaline/Manganese/Ni-Cd batteries CANNOT be used.)
- ④ Read **troubleshooting** page in the base unit's **Operating Instructions.**



Visit our Web site: <http://www.panasonic.com/help>  
• **FAQ and troubleshooting hints are available.**

Panasonic Corporation of North America  
One Panasonic Way, Secaucus, New Jersey 07094

© Panasonic System Networks Co., Ltd. 2011

For assistance, please visit <http://www.panasonic.com/help> 11

# Panasonic®

## Manual de instalación

Auricular Inalámbrico Digital Adicional

Modelo N° **KX-TGA470**



DECT  
**6.0**

**Gracias por adquirir un producto Panasonic.**

Esta unidad es un auricular adicional compatible con la siguiente serie de teléfonos inalámbricos digitales Panasonic:  
KX-TG4731/KX-TG4741/KX-TG4751/KX-TG4761/KX-TG4771/  
KX-TG7731/KX-TG7741

(Los modelos correspondientes están sujetos a cambio sin previo aviso.) Debe registrar este auricular en su unidad base antes de poder usarlo. Este manual de instalación solo describe los pasos necesarios para registrar y comenzar a usar el auricular. Lea las instrucciones de operación de la unidad base para obtener más detalles.

**Cargue las baterías aproximadamente durante 7 horas antes de usarse por primera vez.**

Lea este manual de instalación antes de usar la unidad y guárdelo para consultarlo en el futuro.

Para obtener ayuda, visite nuestro sitio web:

<http://www.panasonic.com/help> para clientes de EE. UU. o Puerto Rico (solo en inglés).

## Información de los accesorios

### Accesorios que se suministran

Accesorio/Número de pedido	Cantidad
Cargador <sup>*1</sup>	1
Adaptador de corriente/PNLV226Z	1
Baterías recargables/HHR-4DPA	2
Cubierta del auricular <sup>*2, *3</sup>	1
Sujetador para cinturón <sup>*4</sup>	1

\*1 PNL1029ZB: Negro, PNL1029ZS: Plateado

\*2 PNYNTGA470BR: Negro

\*3 La cubierta del auricular viene unida a él.

\*4 PNKE1132Z1: Negro

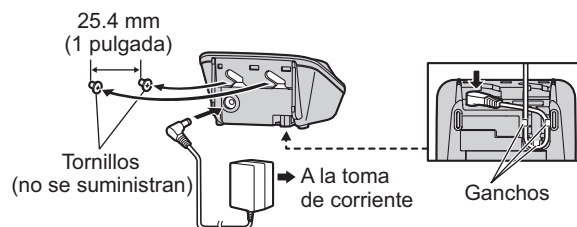
**Nota:**

- Lea las instrucciones de operación de la unidad base para obtener información sobre accesorios adicionales o de repuesto.
  - Audífonos opcionales: KX-TCA60, KX-TCA93, KX-TCA400, KX-TCA430

(2)

## Instalación

### Conexiones/Montaje en la pared



#### Nota:

- Use solo el adaptador de corriente Panasonic PNLV226 que se suministra.
- El adaptador de corriente debe permanecer conectado todo el tiempo. (Es normal que el adaptador se caliente durante su uso.)
- Asegúrese de que la pared y el método de colocación sean lo suficientemente resistentes para soportar el peso de la unidad.

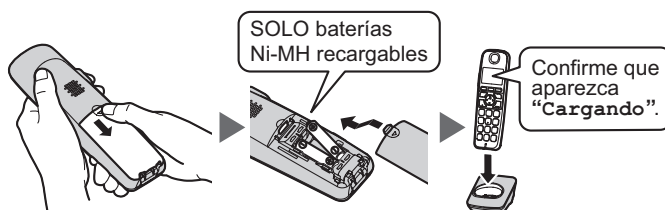
### Instalación y carga de la batería

#### Importante:

- Utilice las baterías recargables que se suministran. Para reemplazarlas, recomendamos el uso de las baterías recargables Panasonic que se especifican en la página 2.
- Limpie los extremos de las baterías (+, -) con un paño seco.
- Evite tocar los extremos de las baterías (+, -) o los contactos de la unidad.
- Confirme que las polaridades estén correctas (+, -).
- UTILICE SOLO baterías de Ni-MH tamaño AAA (R03).
- NO utilice baterías Alcalinas, de Manganeseo o de Ni-Cd.

Cargue aproximadamente durante 7 horas.

- Cuando las baterías estén completamente cargadas, aparecerá “Carg. Comp.”.



**Nota:**

- Si las baterías están completamente cargadas pero el tiempo de funcionamiento parece ser más corto, limpie los extremos de las baterías (+, -) y los contactos de carga con un paño seco y cárguelas de nuevo.

## Cómo registrar un auricular a una unidad base

### 1 Unidad base:

Oprima y mantenga oprimido [LOCATOR] durante aproximadamente 5 segundos.

- Dependiendo de la unidad base, suena un tono de registro.
- Si todos los auriculares registrados comienzan a timbrar, oprima [LOCATOR] de nuevo para detenerlos y después repita este paso.

### 2 Auricular:

Coloque el auricular en la unidad base o cargador, y espere hasta que suene un pitido largo y aparezca  $\nabla$ .

**Nota:**

- Si suena un tono de error, o si se muestra  $\nabla$ , registre el auricular de acuerdo con las instrucciones de operación de la unidad base.

(4)

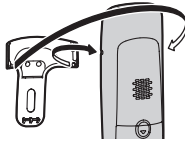
**Idioma de la pantalla**

- 1 [MENU] #110
- 2 [↕]: Seleccione la configuración deseada. → [GUARDA]
- 3 [OFF]

**Sujetador para cinturón**

■ Para colocarlo

■ Para retirarlo





## Free Manuals Download Website

<http://myh66.com>

<http://usermanuals.us>

<http://www.somanuals.com>

<http://www.4manuals.cc>

<http://www.manual-lib.com>

<http://www.404manual.com>

<http://www.luxmanual.com>

<http://aubethermostatmanual.com>

Golf course search by state

<http://golfingnear.com>

Email search by domain

<http://emailbydomain.com>

Auto manuals search

<http://auto.somanuals.com>

TV manuals search

<http://tv.somanuals.com>