

Demand the Best. . .

Find buried cable – electrical lines, telephone lines, and other utilities – with the new . . .

KD-4000 Line Transmitter

The new KD-4000 Line Transmitter applies a tracing signal onto a buried cable which can then be detected by a KD-4510 or KD-4550 Line Locator.

By following the signal, the operator can locate the path of the buried cable, line, pipe or other utility.

The KD-4000 Line Transmitter transmits the signal onto the buried cable one of three ways:

- Direct Connection using connector cord.
- Induction from the Transmitter Case.
- Induction from the optional Inductive Signal Clamp

Standard Equipment

- Durable, easy to carry case
- Color coded connector cord for easy direct connection
- High conductive Ground Rod
- Eight D-Cell Batteries
- Inductive Signal Clamp (Optional Accessory)



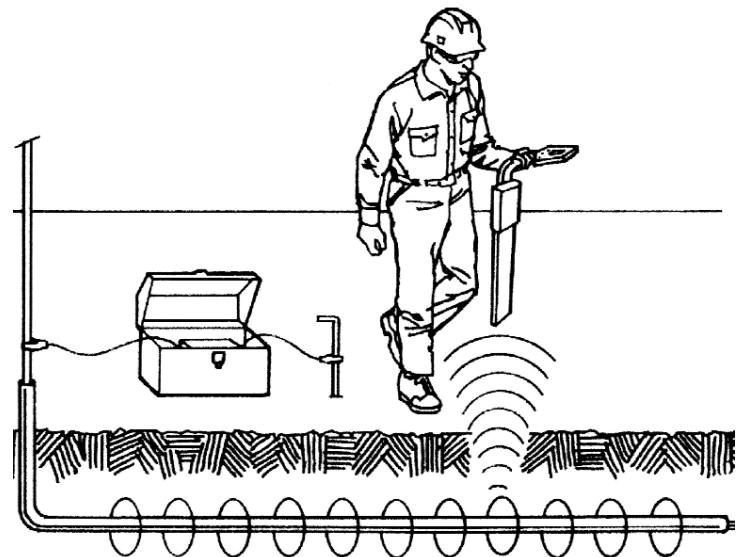
KD-4000
Line Transmitter

Operating Information

Catalog No.	Model No.	Description
76507	KD-4000	Line Transmitter
92597	—	Induction Signal Clamp

No more having to wait for someone to come out to the jobsite to find underground lines and utilities.

Do it yourself with the KD-4000!



KD-4000 Line Transmitter attached as direct connection to metallic cable.

Demand the Best ... Demand
RIDGID | Kollmann.



Free Manuals Download Website

<http://myh66.com>

<http://usermanuals.us>

<http://www.somanuals.com>

<http://www.4manuals.cc>

<http://www.manual-lib.com>

<http://www.404manual.com>

<http://www.luxmanual.com>

<http://aubethermostatmanual.com>

Golf course search by state

<http://golfingnear.com>

Email search by domain

<http://emailbydomain.com>

Auto manuals search

<http://auto.somanuals.com>

TV manuals search

<http://tv.somanuals.com>