

TALKSWITCH DOCUMENTATION

START GUIDE

RELEASE 3.24

CT.TS005.002501.UK

talkswitch®



ANSWERS WITH INTELLIGENCE®

INTRODUCTION

About this guide

This guide describes the steps required to do basic installation and configuration of your TalkSwitch telephone system. Once you have completed these steps, your system can be further customized for your needs. For complete configuration details, refer to the *TalkSwitch User Guide*.

This guide is intended for use with the UK versions of the TalkSwitch product line.

Where to go for further information

The guides listed below, and many other resources, can be found on the TalkSwitch Configuration Software CD, in the TalkSwitch folder in the Windows Start menu once the software has been installed, and online. Visit <http://global.talkswitch.com> and select country or region.

- For complete configuration information, refer to the *TalkSwitch User Guide* after completing the steps in this guide.
- For information on setting up a TalkSwitch system to use Voice-over-IP (VoIP), refer to the *TalkSwitch VoIP Configuration Guide for Multi-location Networks*.
- For information on configuring your system remotely, refer to the *Remote Configuration over IP Quick Guide*.
- For step-by-step instructions on specific features, refer to the Quick Guides in the TalkSwitch Documentation folder in the Windows Start Menu.

Troubleshooting

The TalkSwitch system and the configuration software are designed for ease of use. However, if you encounter difficulties with the installation or configuration of your TalkSwitch:

- Consult the documents on the TalkSwitch Configuration Software CD or in the TalkSwitch folder on your PC.
- Access additional TalkSwitch information online, including FAQs, Quick Guides and other resources at <http://global.talkswitch.com>.

Contacting TalkSwitch Technical Support

- Contact your authorized TalkSwitch reseller.
- Please refer to <http://global.talkswitch.com> for technical support, contact details and hours of operation.

BEFORE YOU BEGIN

Check package contents:

Whether you have purchased a system with one or multiple TalkSwitch units, each package you receive should include the following:

- TalkSwitch unit
- TalkSwitch Configuration Software CD
- 220-240v AC Adapter and power cord
- RJ-11 telephone cables (4 for 48 models; 2 for 24 models)
- RJ-45 Ethernet cable (for 48 models) or USB cable (for 24 models)
- Quick Reference Cards (8 for 48 models; 4 for 24 models)
- Wall mounting template, screws and anchors for optional wall-mounting your TalkSwitch unit.



Ensure that you have the minimum system requirements


You will need a PC to configure your TalkSwitch. Ensure that your PC meets the following minimum system requirements:

- Windows 2000/XP/98* operating system
- 120 MB free hard disk space, 128 MB RAM
- 800x600 video resolution

Network equipment: If your system includes multiple TalkSwitch 48 units, you will need an Ethernet switch. If you plan on using VoIP or configuring your system remotely, you will need an Ethernet switch (or router with an integrated switch) and a broadband Internet connection.

Check your premises telephone wiring

TalkSwitch usually doesn't require any extra telephone wiring beyond the standard infrastructure in most commercial and residential buildings. TalkSwitch comes with cords for connecting the telephone line jacks to your service provider's Master Socket. In the UK, it is recommended that extensions are connected through a Master Socket or an in-line adapter with capacitor to provide the third wire connection required by many telephones. For situations where service provider lines or building extension wiring is terminated on a Connection Box, "3 metre RJ-11 Wiring Tails" are available as an installation kit.

 **Important! Lightning and electrical surges can cause damage to the TalkSwitch unit. We recommend using surge protection equipment on all external telephone and power lines connected to this device.**

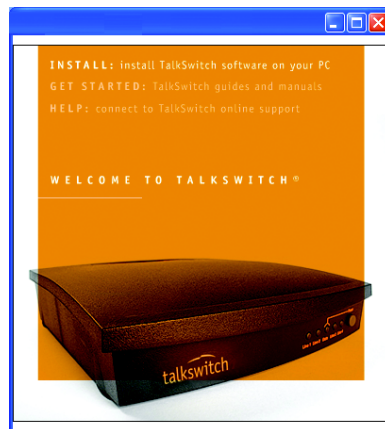
* Although TalkSwitch may function with Windows 98, we cannot guarantee full compatibility with operating systems that Microsoft no longer supports.

STEP 1 — INSTALL THE TALKSWITCH SOFTWARE

1. Ensure that you have Administrator privileges on your Windows XP or 2000 system.
2. Turn your computer on, and insert the CD into the CD-ROM drive.
3. The **Install** main window will appear within 20 seconds. Click **INSTALL** and follow the instructions.

If the installation program does not automatically start (for example, if Autorun is disabled on your PC):

1. From the desktop, double-click the **My Computer** icon.
2. Double-click on the CD drive labeled **TalkSwitch**.
3. Double-click on **startscreen.exe** located in the start folder.
4. Click **Install** and follow the instructions.



STEP 2 — CONNECT TALKSWITCH TO YOUR PC OR NETWORK

TalkSwitch can be set up anywhere in the vicinity of your incoming phone lines and computing equipment.

- TalkSwitch 48 models can be connected to your PC using a Local Area Network (LAN), USB, or serial* (RS-232) connection.
- The TalkSwitch 24 can be connected to your PC using a USB or serial* connection.

If you're installing a TalkSwitch system with multiple TalkSwitch 48 units or you're adding a TalkSwitch unit to an existing system, refer to the *Networking TalkSwitch on a LAN* section on page 12.

Connection Options

Connect using LAN (Ethernet): Connect one end of the provided RJ-45 Ethernet cable to the LAN port at the back of the TalkSwitch 48 unit and the other end directly to your Ethernet switch. Ensure your computer is connected to the same switch.

Connect using USB: Using a USB A-to-B cable, connect the "B" end to the USB port at the back of TalkSwitch, and the "A" end to the USB port of your PC.

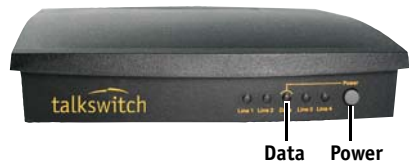
Power up TalkSwitch

1. Connect the provided AC Adapter to the Power port at the back of the TalkSwitch unit and plug the adapter into an available power outlet.



Warning! Never use a power adapter other than the one provided with TalkSwitch.

2. Turn TalkSwitch on by pressing the **Power** button on the front of the unit. The lights on the front panel will flash for a few moments during boot-up, then stop. The center light marked **Data** will remain lit, indicating that the TalkSwitch unit is on.



* Serial cables are not provided with TalkSwitch systems. Some models may not have a serial port.

STEP 3 — OPEN THE TALKSWITCH CONFIGURATION SOFTWARE

Double-click the **TalkSwitch** icon on your Desktop (this icon was created during the software installation), or from the **Start** menu, select **Programs**, select the **TalkSwitch 3.24** folder, and click **TalkSwitch Configuration 3.24**.

TalkSwitch Software will now attempt to detect your unit, displaying progress on a “Detecting TalkSwitch Units” window.

When software succeeds in detecting your TalkSwitch, a progress bar appears on the screen showing the connection to TalkSwitch in progress. When the bar disappears, the **TalkSwitch System Configuration** window will appear.

If software was unable to detect your TalkSwitch automatically, a dialog box opens requesting you to select the connection type.

LAN connection:

From the **Connection Type** menu, select **Ethernet** and click **Connect**.

USB connection:

From the **Connection Type** menu, select **USB** and click **Connect**.

Once connection has been established, the **TalkSwitch System Configuration** window will appear.

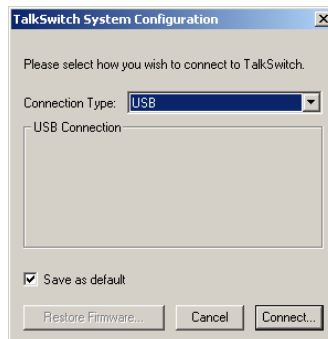
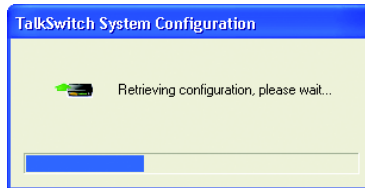
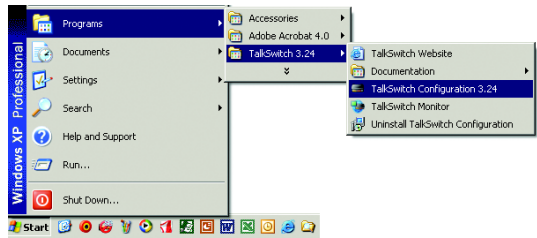
NOTE: If you encounter difficulties opening the TalkSwitch configuration software, check that all your wires and plugs are securely connected.

Localization Setting

Before configuring your system, you will need to select the location where the system is currently installed:

1. In the **TalkSwitch System Configuration** window, select **System Information** and then **Administration** from the menu at the left of the window.
2. In the *Localization Settings* section, click the dropdown list box to select where the system is currently installed. The default International location is UK.

Users in Ireland should set the localization setting to Ireland.



STEP 4 — CONFIGURE AN AUTOMATED ATTENDANT

An Auto Attendants can be set up to answer incoming calls and play a recorded greeting. For example, an Auto Attendant greeting can instruct callers to dial their party's extension or dial '0' for assistance.

If you do not wish to set up an Auto Attendant at this time, you can proceed to the *Step 5 — Configure Incoming Telephone Lines*.

Set up an Auto Attendant

1. In the **TalkSwitch System Configuration** window, select **Call Handling** and then **Auto Attendant** from the menu at the left of the window.
2. In the main panel of the window, click **1** to configure Auto Attendant number 1 (default selection). Additional Auto Attendants (up to 9) can be set up later using the same procedure.
3. From the drop-down lists next to **If the caller selects "0" then:**, select **go to local ext.**, and then **114**.

We recommend assigning extension 114 to your office receptionist (or person assigned to answer general calls); extension 114 is designed to continue operating in the event of a power failure.

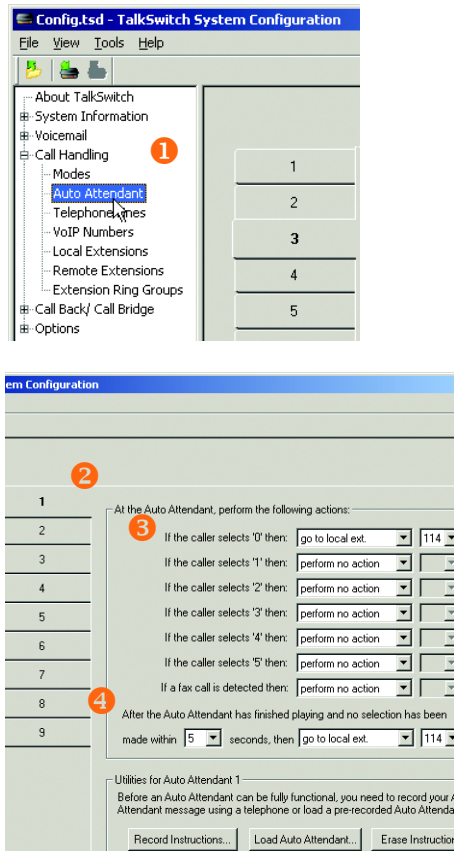
If your office has other directory options (for example, dial 1 for sales), you can set these now.

4. For callers that do not have a touchtone phone, go to the section: **After the Auto Attendant has finished playing and no selection has been made**. From the drop-down lists select the number of seconds to wait (for example, 5), select **go to local ext.**, and select the receptionist's extension (for example, 114).

The final step — setting up your Auto Attendant greeting(s) — is described in Step 8* of this guide — *Auto Attendant and Voicemail Greetings*.

For more information: For complete details and options, such as Automatic Fax Detection, refer to the *Configuring Auto Attendants* and *Configuring Fax Detection* Quick Guides.

* i.e. after phones are connected to TalkSwitch



STEP 5 — CONFIGURE INCOMING TELEPHONE LINES

Setting up your incoming lines will customize TalkSwitch to fit the unique needs of your business. For example, you can set all incoming calls to be answered by an Auto Attendant, set certain extensions to ring before an Auto Attendant answers, or have calls go directly to voicemail.

If you have not set up an Auto Attendant, proceed to the *Set certain extensions to ring or direct calls to voicemail* section on the next page.

Set Auto Attendant to answer all incoming calls

1. Select **Call Handling** and then **Telephone Lines** from the menu on the left of the **TalkSwitch System Configuration** window.

2. From the list of telephone lines, click **Line 1** to configure incoming line number 1.

3. From the drop-down list next to **On an incoming call during mode:**, select **Mode 1**.

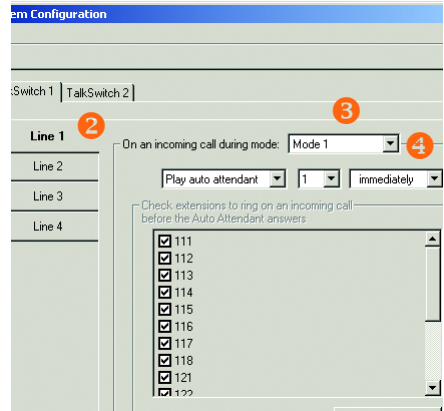
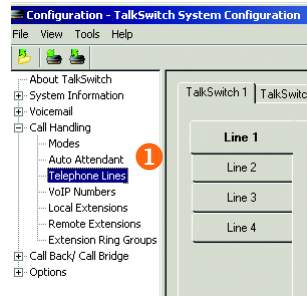
Modes represent different operating schedules, such as standard business operating hours or non-standard (weekends and evenings). Additional modes can be configured later.

4. From the drop-down lists, select **Play auto attendant**, select **1**, and select **immediately**.

Auto Attendant 1 (set up in the previous step) will immediately answer all incoming calls and play a greeting.

5. For TalkSwitch 24, repeat this process for Line 2. For TalkSwitch 48, repeat this process for Lines 2, 3, and 4.

6. If you have a system with multiple TalkSwitch units, you will notice up to four tabs (TalkSwitch 1, TalkSwitch 2, etc.) across the top of the window. Click on each tab to configure each TalkSwitch unit in your network.



Set certain extensions to ring or direct calls to voicemail

Option 1

To have certain extensions ring without playing an Auto Attendant, select **Ring extensions only**. Select the extensions to ring from the list of extensions.

Note: you can adjust the ring sequence by clicking **Adjust Sequence**.

Option 2

To have certain extensions ring for a time before the Auto Attendant is played, select **Play auto attendant**. Select the Auto Attendant number (for example, 1), select the number of rings (for example, **after 3 rings**), and select the extensions to ring from the list (by default they are all selected).

Note: you can adjust the ring sequence by clicking **Adjust Sequence**.

Option 3

To have all incoming calls directed to voicemail, select **Go to voice mailbox**, select the mailbox number (for example, 111), and the number of rings (for example, **after 3 rings**).

For TalkSwitch 24, repeat the process described in the options above for Line 2. For TalkSwitch 48 units, repeat the process for Lines 2, 3, and 4.

If you have a system with multiple TalkSwitch 48 units, click on each tab (TalkSwitch 1, TalkSwitch 2, etc.) to configure all TalkSwitch units in a network.

Option 1

during mode: Mode 1

Ring extensions only | 111 | after 3 rings

Check extensions to ring on an incoming call

<input checked="" type="checkbox"/>	111
<input type="checkbox"/>	112
<input type="checkbox"/>	113
<input checked="" type="checkbox"/>	114
<input type="checkbox"/>	115
<input type="checkbox"/>	116
<input type="checkbox"/>	117
<input type="checkbox"/>	118

Option 2

during mode: Mode 1

Play auto attendant | 1 | after 3 rings

Check extensions to ring on an incoming call before the Auto Attendant answers

<input checked="" type="checkbox"/>	111
<input type="checkbox"/>	112
<input type="checkbox"/>	113
<input checked="" type="checkbox"/>	114
<input checked="" type="checkbox"/>	115

Option 3

during mode: Mode 1

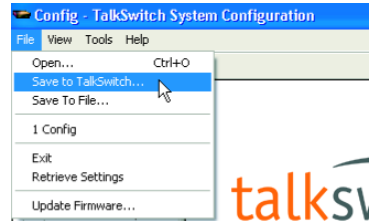
Go to voice mailbox | 111 | after 3 rings

Check extensions to ring on an incoming call before caller is sent to Voicemail

STEP 6 — SAVE SETTINGS TO TALKSWITCH

This step will transfer the settings you have configured from your computer to the TalkSwitch system.

From the **File** menu in the **TalkSwitch System Configuration** window, select **Save to TalkSwitch...** A progress bar appears indicating that the configuration information is being sent to the TalkSwitch system.



STEP 7 — CONNECT TELEPHONES AND PERIPHERALS

Connect incoming (external) telephone lines



Important! Lightning and electrical surges can cause damage to TalkSwitch. We recommend using surge protection equipment on all external telephone and power lines connected to a TalkSwitch system.

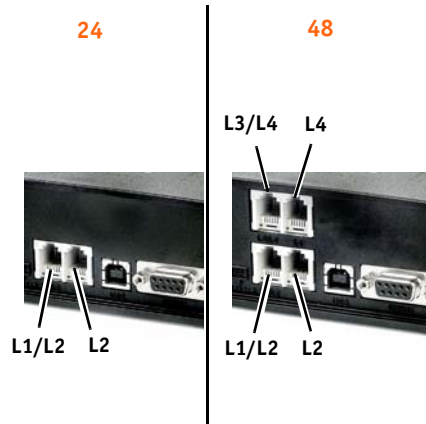
Single line connection (1 incoming phone line per wall phone jack)

Two-wire connector



Use the RJ-11 telephone cables provided to connect external phone lines to TalkSwitch. These cables have a two-wire connector for connection to a single line wall jack. Do not use four-wire telephone cables. See “Check your premises telephone wiring” for notes on telephone line and extension wiring. Users in Ireland should use 2-wire RJ-11 to RJ-11 telephone cords.

1. Connect one end of the provided RJ-11 telephone cable to the wall phone jack of an incoming phone line and the other end to the L1/L2 port at the back of the TalkSwitch unit.
2. If necessary, connect a second external phone line to the L2 port of the TalkSwitch unit using the same method.
3. If you have a TalkSwitch 48, connect the remaining external phone lines to the L3/L4 and L4 ports at the back of the TalkSwitch unit, respectively.

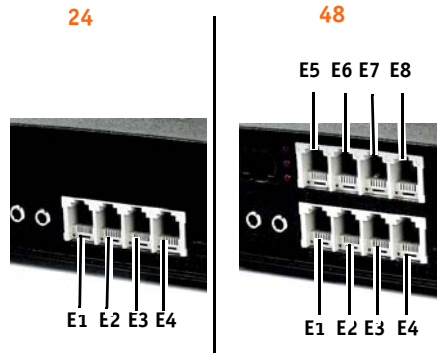


Connect telephones and fax machines to TalkSwitch

For **TalkSwitch 24**, connect the telephone cables from your phones to the E1 through E4 ports of the TalkSwitch unit, consecutively. If you have a fax, connect the phone cable from your fax to the E3 port.

For **TalkSwitch 48**, connect the telephone cables from your phones to the E1 through E8 ports of the TalkSwitch unit(s). If you have a fax, connect the phone cable from your fax to the E8 port.

Take note of which telephone is connected to which port and refer to the table below for corresponding extension numbers. For systems with multiple TalkSwitch 48 units, refer to the *Networking TalkSwitch on a LAN* section on page 12 for further details.



TalkSwitch 48								
TalkSwitch 24								
TalkSwitch Phone Port	E1	E2	E3	E4	E5	E6	E7	E8
Extension number (single unit systems; unit ID = 1)	111	112	113	114	115	116	117	118

Connect an audio source (optional)

There are two ways to add Music on Hold to your system.

A) External Audio Source

To play music while on hold, connect a 1/8" (3.5mm) mono phono connector cable from an audio source such as a CD player, tape player, or sound card to the **MUSIC** port of the TalkSwitch unit.



If you have a system with multiple TalkSwitch units, you will need to provide audio to the MUSIC ports of each unit.

B) Internal Music File

TalkSwitch can play a digital audio file (.wav format). For complete details, refer to *TalkSwitch User Guide* and/or Quick Guide *Configuring Music on Hold*.

Connect to a Public Address (PA) System (optional)

To make announcements over a Public Address (PA) System from a TalkSwitch extension, connect a 1/8" (3.5mm) mono phone connector cable from the TalkSwitch **PA** port to the **input** of the PA system. For complete details, refer to *TalkSwitch User Guide*.

STEP 8 — AUTO ATTENDANT AND VOICEMAIL GREETINGS

If you have set up an Auto Attendant, as described in Step 4 of this guide — *Configure an Automated Attendant*, then you should load or record a greeting now.

What should an Auto Attendant say?

The following is an example of a typical Auto Attendant greeting:

"Welcome to the ABC company. If you know your party's three-digit extension you may dial it now. To reach reception, press '0' or stay on the line."

To load a pre-recorded Auto Attendant greeting

You can load a professionally pre-recorded greeting to TalkSwitch by following these steps:

1. Click on **Load Auto Attendant..**
2. An information box opens asking whether or not to continue. Click **Yes** and follow the instructions.
The file must be an 8khz, 8-bit, mono, μ -law .wav file. A sample greeting (Auto Attendant Sample.wav) is provided in your TalkSwitch folder.

The screenshot shows a configuration window for an Auto Attendant. It contains several rows of options for caller selections:

- If the caller selects '1' then: perform no action
- If the caller selects '2' then: perform no action
- If the caller selects '3' then: perform no action
- If the caller selects '4' then: perform no action
- If the caller selects '5' then: perform no action
- If a fax call is detected then: go to local ext. 118

Below these options, there is a section for timing: "After the Auto Attendant has finished playing and no selection has been made within 5 seconds, then go to local ext. 114".

At the bottom, there is a section titled "Utilities for Auto Attendant 1" with a note: "Before an Auto Attendant can be fully functional, you need to record your Auto attendant message using a telephone or a pre-recorded Auto Attendant." Below this note are three buttons: "Record Instructions...", "Load Auto Attendant...", and "Erase Instructions...".

Record an Auto Attendant greeting

To record an Auto Attendant greeting for Auto Attendant 1:

1. Pick up any telephone connected to the TalkSwitch. You should hear a dial tone.
2. Press **#** then **4 1 #**
3. Follow the prompts to record your message. When your greeting is complete, press **#** to end the recording.

Set up and record voicemail

To set a password, record a personal greeting, and record your name for the company directory:

1. Pick up any telephone connected to TalkSwitch. You should hear a dial tone.
2. Dial *** *** and your mailbox number. Your mailbox number is equivalent to your extension number.
3. Follow the prompts to set a password, record a personal greeting, and record your name for the company directory.

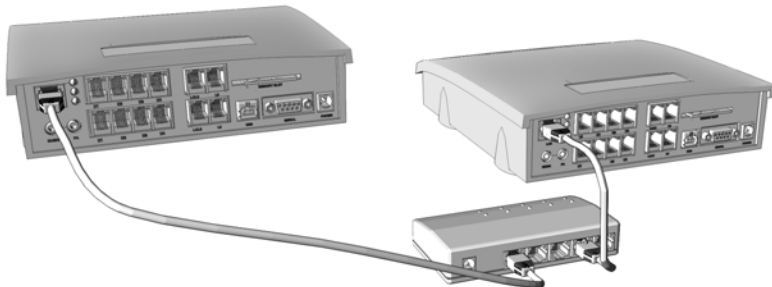
For complete details, refer to Quick Guide *Configuring Auto Attendants*, and/or *TalkSwitch User Guide*.

NETWORKING TALKSWITCH ON A LAN

Up to four TalkSwitch 48 units can be networked together over a LAN to increase the number of lines and extensions in your system.

Connect TalkSwitch units

Use LAN cables to connect each TalkSwitch to your Ethernet switch.



NOTE: TalkSwitch unit enclosures are not designed for stacking. We recommend wall-mounting units in a horizontal row to maximize airflow and keep the units from overheating.

Power up all TalkSwitch units

1. Connect the provided AC Adapters to the Power ports of each TalkSwitch unit and plug each adapter into an available power outlet.
2. Turn the TalkSwitch units on by pressing the **Power** button on the front of each unit.

For further details on networking multiple TalkSwitch units, refer to the *Networking TalkSwitch Units on a LAN* Quick Guide.

Changing TalkSwitch unit ID numbers

Each TalkSwitch unit is pre-programmed at the factory with Unit ID number 1. When you plug multiple units in for the first time or add a unit or units to an existing network, the lights on the front of each TalkSwitch flash. This is an indication that all units have the same ID number. Change the ID numbers so that they are all unique, as follows:

1. Connect a phone to any extension port (eg. E4) of the TalkSwitch unit for which you want to change the unit ID number, and lift the phone handset.
2. The TalkSwitch prompt will indicate that there is an ID conflict. Choose a number, for example "2", as the new unit ID number. Once the unit ID number has been accepted, the lights on the front panel will stop flashing (usually within 10 seconds).
3. Repeat the above steps for each additional TalkSwitch unit, assigning a unique ID number to each unit on the network.

After successfully changing each unit ID to a unique number, each unit can be identified by the network. More importantly each local extension, remote extension, and voice mailbox, will have a unique number wherein the second digit in the three digit identifier becomes the unit ID number. See the table below.



TalkSwitch Numbering Scheme for Networked Units

	Unit ID 1	Unit ID 2	Unit ID 3	Unit ID 4
Local Extensions	111-118	121-128	131-138	141-148
Remote Extensions	211-218	221-228	231-238	241-248
Local Mailboxes	111-118	121-128	131-138	141-148
Remote Mailboxes	211-218	221-228	231-238	241-248
General Mailboxes	410-419	420-429	430-439	440-449

Configuring the Networked Units

Now that you have connected your TalkSwitch units and changed the unit ID numbers, you can configure call handling options for the new unit(s). **Return to Step 3 — Open the TalkSwitch Configuration Software and follow the subsequent steps to complete the configuration of your expanded TalkSwitch network.**

SETUP COMPLETE

Congratulations!

Your TalkSwitch system should now be ready to accept incoming calls.

TIP: Put a TalkSwitch Quick Reference Card next to each extension phone, to help employees become familiar with the TalkSwitch features.

Configuring TalkSwitch 48 remotely

Once installation is complete, you can configure your TalkSwitch 48 via a TCP/IP connection between TalkSwitch and a remote PC running the TalkSwitch configuration software. For details, refer to the *TalkSwitch Remote Configuration over IP* Quick Guide.

Note: If TalkSwitch is installed behind a router/firewall, you will need to map port 9393 to TalkSwitch to enable remote configuration (for details on port mapping, visit <http://www.portforward.com/routers.htm>).

What next

- For advanced configuration and complete information on TalkSwitch features, refer to the *TalkSwitch User Guide*.
- To add remote extensions to your TalkSwitch system, refer to the *Configuring Remote Extensions* Quick Guide.
- To configure your TalkSwitch 48 system to use VoIP, refer to the *TalkSwitch VoIP Configuration Guide for Multi-location Networks*.

We trust that your **TalkSwitch phone system** will provide exceptional features, performance and value to your business. Should you have any further questions, please contact your authorized TalkSwitch reseller or visit <http://global.talkswitch.com> and select country or region.

We welcome your feedback, comments and suggestions. Please e-mail us at info@talkswitch.com or write us at **TalkSwitch, 1545 Carling Avenue, Suite 510, Ottawa, ON Canada K1Z 8P9**.

Thank you for choosing TalkSwitch.

TalkSwitch. Copyright 2006.
All Rights Reserved.

CT.TS005.002501.UK (April 2006)

TalkSwitch is a division of Centrepont Technologies Inc.

Free Manuals Download Website

<http://myh66.com>

<http://usermanuals.us>

<http://www.somanuals.com>

<http://www.4manuals.cc>

<http://www.manual-lib.com>

<http://www.404manual.com>

<http://www.luxmanual.com>

<http://aubethermostatmanual.com>

Golf course search by state

<http://golfingnear.com>

Email search by domain

<http://emailbydomain.com>

Auto manuals search

<http://auto.somanuals.com>

TV manuals search

<http://tv.somanuals.com>