



Bluetooth™ Satellite Navigation for Windows Mobile Smartphones

# COPILOT® live<sup>6</sup> SMARTPHONE



## User Manual



# Contents

<b>Welcome to CoPilot!</b> .....	<b>i</b>
About GPS Technology.....	1
Safety Warning.....	1
<b>Getting Started</b> .....	<b>2</b>
Requirements .....	2
Hardware Setup.....	2
Connecting Your Smartphone.....	3
Installing CoPilot.....	4
Product Key Entry and Activation .....	4
Changing the Voice Option at Any Time.....	5
<b>Map Download to Your Smartphone</b> .....	<b>6</b>
Selecting a Data Area.....	7
Region.....	7
City Radius .....	7
Map Area .....	8
Trip .....	9
Data Download.....	10
CoPilot QuickStart Application Download.....	10
POI Download Options.....	11
Trip Transfer .....	11
Importing Custom Places .....	12
Editing Custom Places .....	13
<b>Using CoPilot for Guidance</b> .....	<b>14</b>
Address Entry.....	14
Stop Menu Options.....	16
Entering Your Home Address.....	17
Entering Your Work Address.....	17
Favorites .....	18
Intersections.....	18
Entering an Outlook Contact.....	18
Finding Points of Interest.....	19
Picking Stops From the Map .....	20
Start Driving!.....	21
Safety View .....	22
Map Views .....	21
Itinerary View .....	22
Trip Editing.....	22
Menu Options on the Road.....	23
Hotkeys.....	23
Calculating a Detour.....	23
Avoiding Roads.....	24
Waypoints .....	24
Getting ETA's and Distances.....	24
Saving a Current Location as a Favorite.....	25
Optimizing Your Stop Order.....	25
General Options.....	25
GPS .....	25
Routing.....	25
Guidance.....	27
Map .....	27
Safety View .....	27
Live.....	27
Language & Speech.....	27
POI Alerts.....	28
Upgrade License .....	29
Backlight.....	29
CoPilot Modes .....	29
<b>Trip Planning On Your Smartphone</b> .....	<b>30</b>
<b>Trip Planning On Your Desktop</b> .....	<b>31</b>
Reference: CoPilot On Your Desktop.....	35
<b>Copilot Live Communications</b> .....	<b>38</b>
<b>Real-Time Traffic Information</b> .....	<b>39</b>
<b>Creating/Using Your Own Voice</b> .....	<b>41</b>
<b>CoPilot Technical Support</b> .....	<b>42</b>
License Upgrade .....	42
Adding a Data Region.....	42
Region Selection .....	43
<b>Using Help Files</b> .....	<b>43</b>
<b>Software Registration</b> .....	<b>43</b>
<b>License Agreement</b> .....	<b>44</b>

# Welcome to CoPilot!

**Imagine...** a CoPilot at your side that always knows where you are, where you're going, and exactly how to get there. Now confidently drive anywhere while CoPilot, using the latest, most accurate GPS technology, shows you all the correct turns to take to reach your destination.

Better yet, if you should miss a turn, encounter heavy traffic, or simply decide to go a different way, CoPilot's dynamic directions automatically provide you with an updated route to your destination. Keep your eyes on the road and your hands on the wheel as CoPilot's unique voice technology speaks the directions to you. In addition, detailed street maps show your passengers the current street location and the route to your destination.

## About GPS Technology

The Global Positioning System (GPS), developed by the U.S. Department of Defense, is a constellation of 24 satellites that orbit the Earth twice daily. Each satellite contains an atomic clock that is accurate to the nanosecond and constantly emits radio waves toward Earth. GPS sensors (hardware devices for receiving data) can receive these signals from the satellites and, using their own internal clock, can calculate the amount of time it has taken for the signal to be received. GPS relies on the fact that radio waves travel at the speed of light to calculate distances, and the exact location of the sensor is figured by combining the data received from four satellites.

Using the data from these four satellites, GPS is able to give you the latitude, longitude and elevation of your present location, and also your road speed and direction of travel on a route. Given the right conditions, a GPS sensor can identify your geographic position anywhere in the world within a few meters.

## How CoPilot Uses GPS

CoPilot uses the GPS positional data that it receives from your hardware unit to display your current position on a map as you drive. This is called "tracking". CoPilot also uses the GPS data it receives to guide you along a planned route if you enter a destination on your Smartphone. CoPilot guides you with audible prompts and on-screen directions as you drive.

## GPS Accuracy

The GPS signal CoPilot receives from the constellation of satellites has a rated accuracy of within 5 - 10 meters. This means that 95% of the time the reported location is within 15 - 30 feet of your exact position. If CoPilot initially places you on the wrong road (this happens only rarely), keep driving and CoPilot will automatically correct itself and find your proper position.

Occasionally, CoPilot's GPS tracking will be less accurate or fail to work at all because your GPS receiver is unable to receive satellite signals. Heavy foliage, tall buildings, or any other structures obstructing communications will interfere with CoPilot's ability to track your location. Like your car radio, GPS tracking can also be affected by weather conditions if severe. CoPilot will continue tracking as soon as adequate signals are available. Despite these limitations, you can expect CoPilot to provide you with useable and accurate information most of the time. CoPilot will alert you if accurate information is unavailable.

CoPilot's personal, portable GPS navigation system gives you the freedom to explore and the confidence that you'll never get lost again!

## Safety Warning

**Always keep your hands on the steering wheel and eyes on the road when driving!**

Do not use this product in any way that interferes with safe and attentive operation of a vehicle. When used in a vehicle, do not place the GPS receiver, antenna, power supply, or your computer where it may strike the driver or passengers if the vehicle turns sharply or stops abruptly. This product is designed, manufactured, and intended as an aid to planning and navigating routes. The accuracy of the map data, driving directions, and GPS tracking system is insufficient for this product to be used for automated navigation or in any situation where a failure of the unit could result in injury or death.

# Getting Started

## Requirements

This User's Guide includes complete instructions for installing your CoPilot software, downloading map data to the Smartphone, and using CoPilot on your Smartphone to guide you to your destination or to plan trips.

The steps you need to take to get up and running with CoPilot:

- ✓ Connect your Smartphone to your desktop/laptop (*not necessary if a Quickstart installation memory card was included with your purchase*).
- ✓ Install CoPilot to your desktop and Smartphone using the Product Key found on the printed CoPilot Quick Start or on the supplied Product Key card.
- ✓ On your desktop, create a map data region and download it to your Smartphone (*not necessary if a Quickstart installation memory card was included with your purchase*).
- ✓ Activate CoPilot on your Smartphone.
- ✓ Enter an address and start driving!

## Desktop PC Requirements

To install CoPilot on your desktop or laptop PC, you must have:

- Microsoft Windows 2000, ME, or XP
- 400 MHz processor or better
- 16X CD-ROM or better
- 128 MB of RAM and a hard drive with 1 GB of available disk space for map data
- Microsoft ActiveSync version 3.1 or later

## Smartphone and GPS Requirements

- Windows Mobile 2003 or Windows Mobile 5
- Bluetooth GPS receiver or built-in GPS

## Hardware Setup

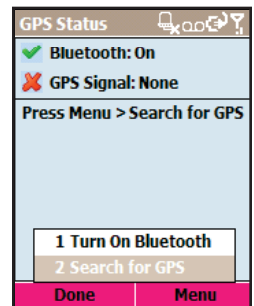
**WARNING:** Never leave your Smartphone or GPS receiver in a closed vehicle that exceeds 140° F.

### Configuring the Bluetooth GPS Receiver:




Once you have installed CoPilot Live on your phone, you will be prompted to set up your remote Bluetooth GPS receiver from the *GPS Status* screen. CoPilot uses the Bluetooth GPS receiver to enable you to obtain a GPS fix for CoPilot to calculate your route and provide navigation guidance.

**IMPORTANT NOTE:** Please ensure that the correct date and GMT time are set on your phone before commencing with setting up your Bluetooth GPS receiver.

1. Switch on your Bluetooth GPS receiver (slide the switch to 1). Green and blue lights should turn on if the GPS receiver is properly charged (see *Troubleshooting*, next page, on proper charging).
2. Open CoPilot. CoPilot will now check whether Bluetooth is switched on. If not, select **Menu > Turn On Bluetooth**.
3. Search for your GPS receiver. Select **Menu > Search for GPS**. After a few minutes the system should display a list of Bluetooth devices. Your Bluetooth receiver will be identified by a code **BTGPS xxxxx**.
4. Highlight the GPS receiver and press **SELECT**. The GPS screen should now change to **'GPS Signal: Found'** and the GPS information displayed.
5. Select **Done**. Now you can enter a destination and start navigating!



### LED STATUS LIGHTS:

-  **Blue LED Light indicates the Bluetooth connection status.**  
Flashing every 1 second: GPS was just powered on and waiting for a connection. Flashing every 2 seconds: GPS is connected to phone.
-  **Green LED Light indicates GPS status.**  
Light Constantly on: GPS was just powered on and attempting to acquire a GPS position. Light is Flashing: GPS has acquired a GPS position.
-  **Orange/Red LED Light indicates Battery status.**  
Red Light Constantly on: Battery is Low. Orange Light is Constantly on: Battery is charging. No Light (off): Battery is fully charged.

## GPS Troubleshooting:

### 1. Unable to switch on Bluetooth

- Close CoPilot by selecting **'Exit'** from the menu.
- Switch your phone off and then on again using the power button.
- Restart CoPilot**, and select **GPS** from the CoPilot Welcome screen.
- Select **Menu | Turn on Bluetooth**.
- Bluetooth should now be switched ON.

### 2. Proper Charging Techniques (IMPORTANT)

The Bluetooth GPS only needs to be charge for a maximum of 1 hour or until the Battery LED is off. Do not leave the Bluetooth GPS receiver connected to the charger at all times, as it will degrade the battery life and eventually drain the battery completely. Normal battery life is 8 hours.

### 3. 'No devices found' in search for GPS

- Close CoPilot by selecting **'Exit'** from the menu.
- Ensure that your Bluetooth GPS receiver is switched ON: Switch the GPS receiver off and on. The green and blue lights will turn on if the GPS receiver is charged up and working properly.
- Restart CoPilot** and select **GPS** from the CoPilot Welcome screen.
- Select **Menu | Search for GPS**.
- Your Bluetooth receiver should appear with the name **'BTGPS xxxx xxxx'**.

### 4. Unable to get a GPS Fix.

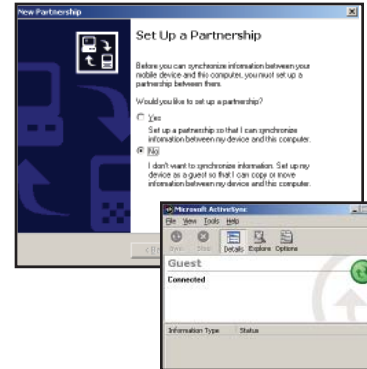
If you can't get a GPS signal after setting up your receiver, ensure that your Bluetooth GPS receiver is switched on, charged up, and working properly by switching it on and off. The green and blue lights will turn on if the GPS receiver is properly charged. To avoid unnecessary delays, make sure that your phone's date and time are properly set.

## Connecting Your Smartphone

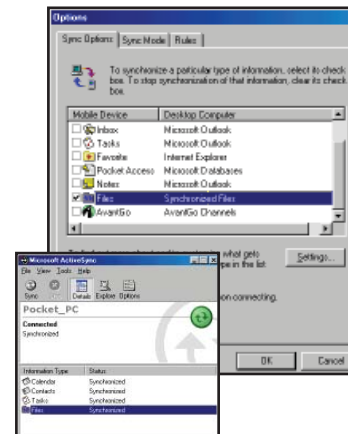
**NOTE:** If a Quickstart installation memory card was included with your purchase of CoPilot, you do not need to do this.

In order to successfully transfer data from your desktop to your Smartphone, you must have Microsoft ActiveSync 3.1 (or later) installed. This software is necessary to connect the two machines and is provided by your Smartphone manufacturer. If you did not receive this software with your mobile device, contact the distributor immediately.

1. When connecting your Smartphone, if you have not set up a partnership between your Smartphone and your desktop, you will be prompted to do so. This is not required. If you choose not to set up a partnership, select **Guest partnership**, and you will be logged in as a Guest and ready to transfer data between machines.



2. If you have set up a partnership in the past, or choose to do so at this point, be sure to allow your Smartphone to synchronize with your desktop or laptop prior to launching CoPilot.



**NOTE:** If your desktop/laptop computer does not seem to be recognizing the connection with your Smartphone, select **Connection Settings...** from the drop-down **File** menu, and make sure you're connected using the appropriate Port. Then click **Get Connected...** in the File menu and follow the on-screen instructions.

## Installing CoPilot

### Installing From a Quickstart Installation Memory Card:

1. Set up your phone and charge the battery following the instructions in your phone's manual.
2. You must set the correct date and GMT time on your phone for optimal GPS functionality.
3. Your CoPilot Live satellite navigation software is supplied pre-loaded on a storage card. Insert your CoPilot storage card into the slot of your phone.
4. Once the CoPilot storage card is inserted, CoPilot will install automatically. See the instructions below for what to do if installation does not begin automatically.
5. You will be prompted to choose a location for '**CoPilot Smartphone**'. Select '**phone**' from the pick list and press '**Done**'.
6. You will see '**copilotsp2003.cab**' being installed. Once completed, the message '**CoPilot.SP2003.CAB was successfully installed on your device**' will be displayed. Select '**OK**'.
7. Installation is now complete and you will be returned to your phone's Home screen. Press **Start | More | CoPilot** to launch CoPilot.

**NOTE:** You may receive a message that states "Application came from an Unknown Source. Would you like to install anyway?" Click "**Yes**" to this message to install CoPilot.

### *If Installation Does Not Start Automatically:*

1. From your phone's Home screen select **Start | Accessories | File Manager**.
2. Select the **Storage Card** folder and then the **2577** folder.
3. Scroll down the page and select **AUTORUN.EXE** — installation should now begin.

### Installing From CD's:

Your desktop/laptop and Smartphone should both be turned on. The cradle/cable for your mobile device must be connected to your desktop through either a USB or Serial port. Your Smartphone should be connected to your desktop via ActiveSync (see p. 3).

### Installation Steps:

Step 1: Insert the CoPilot Install Disc into your CD-ROM drive. After a few seconds, the Installation Wizard will open. Follow the instructions, entering your **Installation Product Key** when prompted. This Product Key can be found on the back cover of your printed CoPilot *Quick Start Guide* or on the supplied Product Key card.

The CoPilot application will be installed to your desktop PC and to your Smartphone separately. The Smartphone installation will ask if the default location (the device's storage memory) is where you want the application to be placed.

Step 2: When the installation is complete, a CoPilot icon will appear on your desktop. Click **Finish** to close the Installation Wizard.

Step 3: The first time you open CoPilot on your Smartphone, you will be asked to activate the product.

### Product Key Entry and Activation

The first time you launch CoPilot on your phone you will be prompted for your product key. You can find this key on the back cover of your printed CoPilot *Quick Start Guide*. Input the product key carefully and press **Done**.

**TIP:** It is recommended that you switch off T9 predictive text entry when inputting your product key.

You will now be asked to activate your CoPilot license within 3 days. Select one of the three methods below to activate your CoPilot license. Alternatively, press **Menu** followed by **Later** if you would prefer to activate afterwards at your convenience, within the next 3 days.

## Three Ways to Activate:

### 1. Recommended: Automatic Activation using your phone's Wireless Internet Connection

- a. Select the **ACTIVATE** soft key.
- b. Select **MENU** then **AUTOMATIC**.
- c. Enter your e-mail address and press **NEXT**. CoPilot will now activate over the Internet.
- d. Once complete, you will see the message '**license activated successfully**'. Select **Done**.
- e. *(If installing a Europe region upgrade)* You will now be asked to confirm the map region that you wish to activate. '**United States**' should be displayed. Select **Done**.
- f. *(If installing a Europe region upgrade)* You will be reminded that '**Your region cannot be changed once it is selected**'. Select **Done**.
- g. Activation is now completed.

### 2. Automatic Activation via an Internet-connected Desktop PC or Laptop

Connect your Smartphone to an Internet-enabled Desktop or Laptop using the supplied Synchronisation cable, and Microsoft ActiveSync software on your desktop PC or Laptop. Make sure your desktop/laptop is connected to the Internet, then follow the steps outlined above.

### 3. Manual Activation (requires an Internet-connected computer)

- a. Select the **ACTIVATE** soft key.
- b. On the following screen select **MENU | MANUAL**.
- c. On the next screen you'll see your Product Key and License ID. You need this information to manually activate CoPilot as follows:
- d. On a desktop/laptop go to the Internet site **http://activate.alk.com** and enter the information. You will be given an activation code.
- e. Enter the activation code into the phone when prompted and select **Next**.

- f. Once complete, you will see the message '**license activated successfully**'. Select **Done**.
- g. *(If installing a Europe region upgrade)* You must now confirm the map region that you wish to activate. '**United States**' should be displayed. Select '**Done**'.
- h. *(If installing a Europe region upgrade)* You will be reminded that '**Your region cannot be changed once it is selected**'. Select **Done**.
- i. Activation is now completed.

## Changing the Voice Option at Any Time

CoPilot offers one or both of the following voice options, depending on your selected language:

- **Male Pre-Recorded Sound Files**
- **Female Pre-Recorded Sound Files**

To change the voice option:

1. Open CoPilot.
2. In the *Welcome* screen select the **Options** icon; or in the *Going To* screen or guidance screen press the **Menu** soft key and select **Options**.
3. Select **Language & Speech** from the Options menu.
4. Under **Language** use the right or left key to open a pick list of languages and change your language setting.
5. Under **Voice** use the right or left key to toggle between **Male** and **Female**.
6. To hear your selection before exiting this screen, press **Test**.
7. When finished, press **Done**.

# Map Download to Your Smartphone

**NOTE:** If your CoPilot product came with a Quickstart installation memory card, you don't need to download map data (it's already on your Quickstart card). You can skip to *Using CoPilot for Guidance*, p. 14.

To download map data from your Desktop PC or Laptop to your mobile device, you select the data to download from one or more regions that you specify in the CoPilot application on your desktop. It's a simple process.

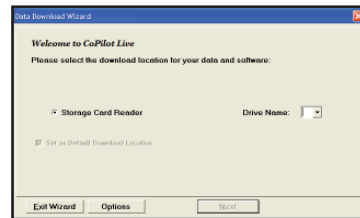
CoPilot gives you two options for downloading data:

- Download directly to your Storage Card Reader — follow steps **(1)**, **(2)**, and **(3a)** below.
- Download to a hard drive on your computer, then manually copy the data to your Smartphone Storage Card using ActiveSync — follow steps **(1)**, **(2)**, and **(3b)** below.

## (1) Choose a Storage Location:



1. Open the CoPilot application on your desktop/laptop, then click the **Data Download Wizard** icon in the sidebar on the left. Make sure your Smartphone is synchronized. CoPilot will scan your computer to detect which drive options are available.



2. Click on the **Drive Name** pick list that appears and select either the drive letter of your Storage Card Reader (if you are using one) or the drive letter of your Hard Drive (e.g. C). Click **Next**.

## (2) Select a Data Area:

Select a data area using one of three methods (see *Selecting a Data Area* p. 7-9 for a description of each method):



**City Radius** to select an area around a town or city;



**Map Area** to select an area directly from the map;



**Trip** to select a corridor along a route between two places.



**Region** to select a whole country or region.

## (3) Download the Data:

### (3a) Using a Storage Card Reader:

1. Make sure the Storage Card for your Smartphone is inserted in the Storage Card Reader.



2. Clicking the **Download** icon will take you to a screen where *Available Area(s)* for download are displayed on the left. To designate an area to include in the download, highlight it and then click on the right arrow button to move it to the *Data Included in This Download* list on the right. To take an area off the list, highlight it and click the left arrow button.

3. After confirming that the area(s) you would like to download are in the *Data Included in This Download* list, click **Download** to complete the map data download process (see *Data Download*, p. 10).

4. Remove the Storage Card from the Storage Card Reader and insert it into the Smartphone. Your data is now ready to be used by CoPilot.

### (3b) Using ActiveSync:

1. Ensure that your Smartphone is connected to the desktop/laptop via ActiveSync.



2. Clicking the **Download** icon will take you to a screen where *Available Area(s)* for download are displayed on the left. To designate an area to include in the download, highlight it and then click on the right arrow button to move it to the *Data Included in This Download* list on the right. To take an area off the list, highlight it and click the left arrow button.

3. After confirming that the area(s) you would like to download are in the *Data Included in This Download* list, click **Download** to complete the map data download process (see *Data Download*, p. 10).

4. On the desktop, double click the **My Computer** icon. Navigate to the drive letter you downloaded the data to. The data you downloaded will be in a folder named "CoPilot". For example, if you had chosen Drive C, the data would be in the folder "C:\CoPilot\".

5. Copy the CoPilot folder by right clicking on it and selecting **Copy**.

6. Open ActiveSync and click on the **Explore** icon. Navigate to the Smartphone's Storage Card. Use the menu option **Edit > Paste** to copy the folder to your Smartphone's Storage Card.



## Selecting a Data Area



After you specify a location where the data will be stored, you will be prompted to select a region on the map to download. CoPilot provides several ways to select a data region, described on p. 7-9 below.

### Region



To download a whole country or CoPilot data region, click the **Region** option in the Data Download Wizard, then select a region in the next screen and click **Next**.

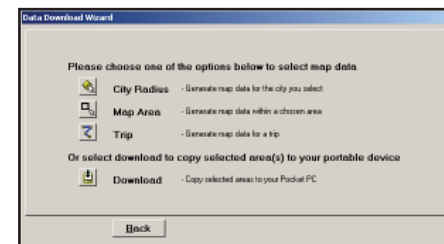
The country or region you select must be included in the region that was installed on your Smartphone (if not, a warning will appear and you won't be able to proceed with the download). Region downloads generally take the longest amount of time, depending on the size of the selected region.



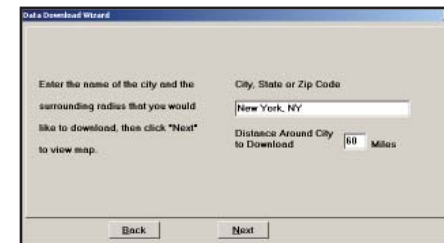
## City Radius

This method allows you to quickly select data in the shape of a circle surrounding any city on the map. In the Data Download Wizard you type a city name and state abbreviation or ZIP code and enter the number of miles/kilometers you would like the radius to extend around the city, then click **Next**.

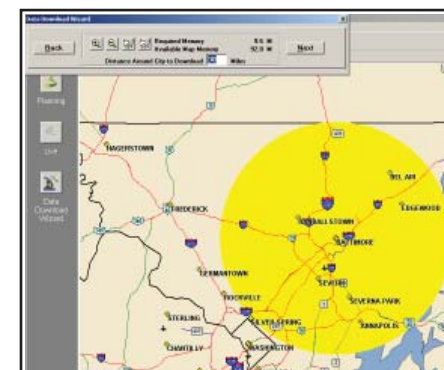
The Wizard displays a map that shows the city and the radius you chose. At this point you can zoom the map in and out using zoom buttons and adjust the size of the data area by altering the radius of the circle.



1. Click the **City Radius** icon in the Data Download Wizard.

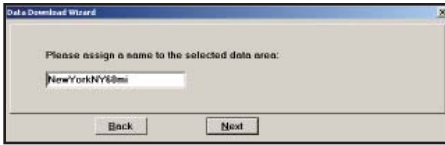


2. Enter a **City, State or ZIP code**, and a **mile radius** around the area that you would like to download. Click **Next** to verify that the area is correct.

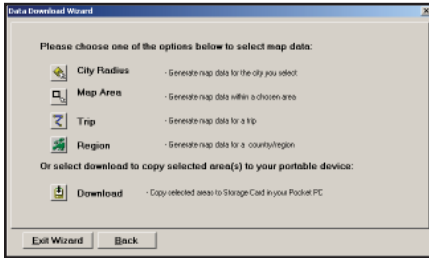


3. Using the Data Download Wizard toolbar you can zoom in or out, change the radius, or go back to the previous screen. When you are satisfied with your selection, click **Next**.

**Note:** CoPilot's available memory calculations subtract a certain amount from the available memory on your storage card (if you are using one) to account for support files.



4. Name the selection, then click **Next**.



5. You will return to the *Data Selection* menu where you can select another data area if you like, using any method. When you finish selecting data areas, click the **Download** icon and you will be taken to the final screen where you can build your download.

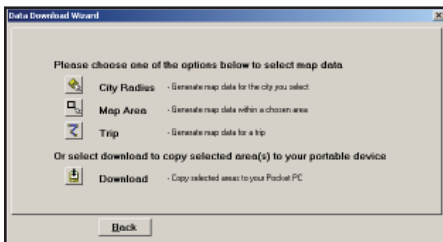
## Map Area

This method of selecting data allows you to choose an area of data by drawing a box on the Data Download Wizard's map screen.

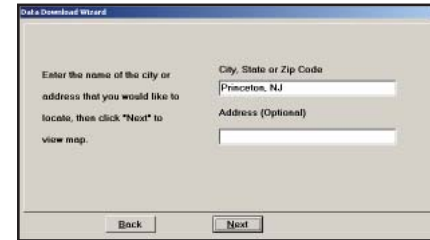
In the Wizard, you enter a city name near which you would like to select data, then click **Next**. The map will zoom to that location. Then you create a box around the desired area by clicking and dragging your mouse across the map. The street-level data within that box will be selected.

You can zoom the map in and out using the zoom buttons and adjust the size of the data area by redrawing the box.

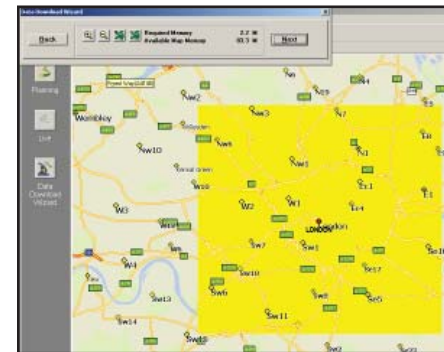
Follow these steps to download Map Area data:



1. Click the **Map Area** icon in the Data Download Wizard.

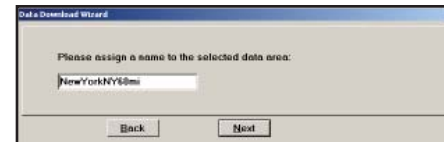


2. Enter a **City, State or ZIP code** (address optional) within the area that you would like to download. Click **Next**.

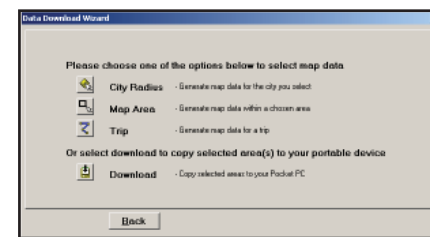


3. Click and hold the left mouse button and drag the cursor to draw a box around a desired area. The size of the area will be displayed in the toolbar. Click **Next**.

**Note:** CoPilot's available memory calculations subtract a certain amount from the available memory on your storage card (if you are using one) to account for support files.



4. Name the selection, then click **Next**.



5. You will return to the *Data Selection* menu where you can select another data area if you like, using any method. When you finish selecting data areas, click the **Download** icon and you will be taken to the final screen where you can build your download.

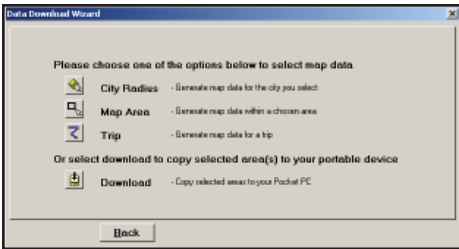
# Trip

This method of selecting data is by far the most customizable method. It allows you to run a trip and select street-level data specific to that trip, thereby avoiding unneeded data and saving valuable memory space.

Once the trip is run, the Data Download Wizard automatically selects circles of data around your origin and destination, and a corridor of data along your route. You can then click **Options** to adjust the radius of the circles and the width of the corridor.

The Trip Itinerary for each trip you download will be stored on your Smartphone (see *Trip Transfer*, p. 11). Multiple trips can be downloaded to the Smartphone for later use.

Follow these steps to download Trip data:



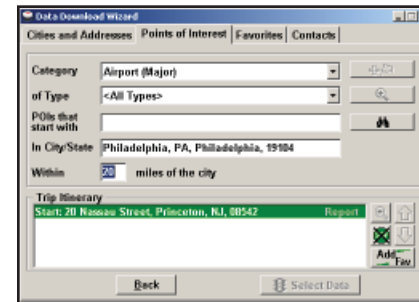
1. Click the **Trip** icon in the Data Download Wizard.



2. Enter at least a start and end place for your trip. In the *Cities and Addresses* tab, type a **City, State or ZIP Code** and press <Enter>. Optionally, you can enter an address in the same way. Click the **Add Stop** button to add this place to your trip.



You may enter one or multiple destinations. Use the buttons to the right of the Itinerary to zoom to a stop on the map, change the order of stops, or delete a stop.

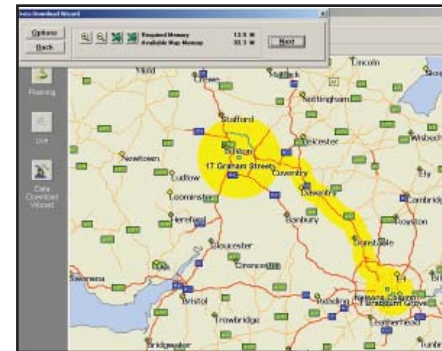


3. To search for a POI, click the *Points of Interest* tab, enter a **City, State** or a ZIP Code and click the **Find** button.



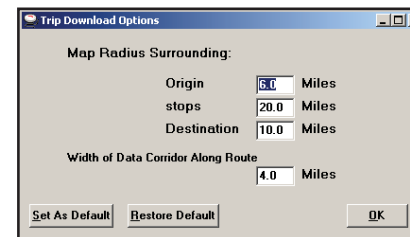
(You can speed up your search by selecting a **POI Category** and/or **Type**.) Then highlight a selection on the list, click **Select**, then **Add Stop** to add the POI as a stop.

**Note:** For a more detailed description of trip entry, open CoPilot Help from the desktop application (**Help** menu > **Help Contents and Search**).

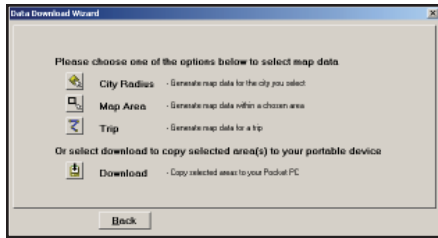


4. When all your stops have been entered, click **Select Data**.

By default a 20 mile (32 kilometer) radius around all stops and a width of 4 miles along the corridor which connects them will be highlighted. **Note:** CoPilot's available memory calculations subtract a certain amount from the available memory on your storage card (if you are using one) to account for support files.



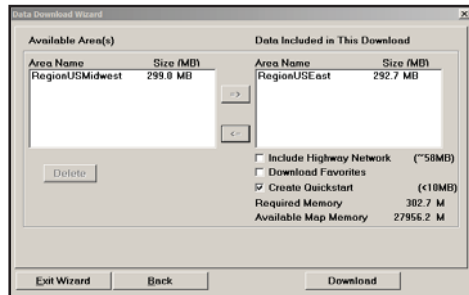
5. To customize these distances for any trip, click **Options** and type a distance in the appropriate box.



6. You will return to the *Data Selection* menu where you can select another data area if you like, using any method. When you finish selecting data areas, click **Download**. Trip itineraries that were created using the *Trip* download method will be transferred along with map data (see p. 11 for details).

## Data Download

When you're ready to execute a download, the Wizard will display a list of **Available Area(s)** for download on the left side of the window. To designate an area to include, click on it and then click on the right arrow button to move it to the **Data Included in This Download** list. If you need to move an area off the *Included* list, click on it and use the left arrow button.



To delete an area from memory, click on it and click **Delete**.

Notice that the amount of available map memory and the memory required for all the areas on the *Included* list is shown beneath the list.

**NOTE:** CoPilot's available memory calculations subtract a certain amount from your storage card (if you are using one) to account for support files.

**IMPORTANT:** Each data download overwrites the data that is already on your Smartphone. If any data areas are already loaded on your Smartphone, they will be overwritten by the new download. Therefore, your download must include all areas that you wish to have available on your Smartphone.

Check **Include US Highway Network** to download CoPilot's complete United States Highway Network along with your data. This additional download requires approximately 59 MB of space on your Smartphone. When this network is loaded, major roads, cities, and some points of interest outside your selected data region will be shown on the map and you'll be able to receive guidance as you drive anywhere in the European Union.

Check **Download Favorites** to download your Favorites list from the Trip Planner window on your desktop along with map data. These addresses will then be available as Favorites for trip entry on the Smartphone.

**RECOMMENDED OPTION:** It is recommended that you leave **Create QuickStart** checked (see below for a description of this feature), but you may uncheck it if you don't want the QuickStart copied with your download.

### CoPilot QuickStart Application Download

Each time you download data, CoPilot gives you the option to download a complete, ready-to-use "QuickStart" version of CoPilot along with the data. Having the QuickStart version on your mobile device ensures that CoPilot will be available even if you experience technical problems with your Smartphone and need to perform a hard reset. (During a hard reset, all installed applications are deleted from the Smartphone.) **The QuickStart version will automatically install CoPilot after a hard reset, and your map data will already be there!**

**To run the QuickStart application** on your mobile device after a hard reset, simply turn on your Smartphone. CoPilot will automatically begin installation.

The QuickStart option can be turned on or off in the final step of the download process (see above). By default this option is active and the QuickStart download will be executed each time you download map data.

The QuickStart needs 10 MB of space on your Storage Card. Once the QuickStart has been copied, you can save time the next time you download data by unchecking the **Create QuickStart** option in the final Data Download Wizard screen before proceeding to download. You will also want to uncheck this option if you do not have enough room on your Storage Card for it.

If the QuickStart is copied onto your Storage Card and you need to remove it, simply delete the folder that contains it. The folder will be named "2577".

**NOTE:** CoPilot will need to be activated within 3 days after installation.

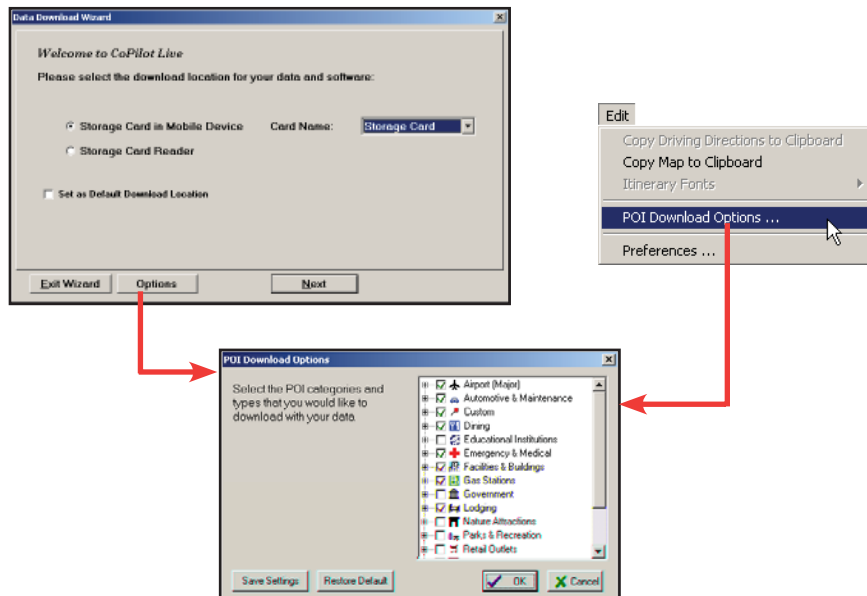
## POI Download Options

When you download a data region from your desktop PC, you get all roads within that region. Also included are regional points of interest (POI) such as gas stations, hotels, restaurants, visitor attractions, etc.

CoPilot now lets you control the number and types of POI that get downloaded along with map data. You can save space on your Smartphone by eliminating categories of POI that you're not interested in seeing.

To select which POI categories you want, choose **POI Download Options** from the **Edit** menu in the desktop application or, when you first open the Data Download Wizard, click the **Options** button in the Wizard. Check the categories you wish to select (click the plus sign next to each category to see the included sub-categories).

Click **Save Settings** to save the set of categories you create. Click **Restore Default** to return to CoPilot's default categories.



## Adding OV2 POI Sets

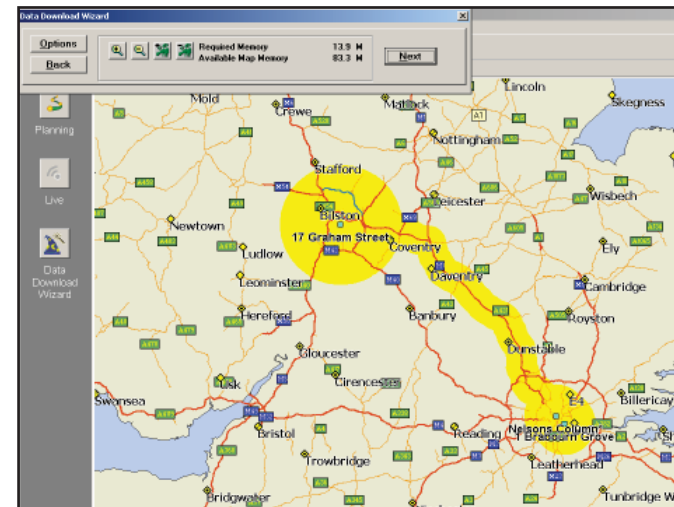
CoPilot supports OV2 POI files. You can copy any OV2 file into the CoPilot\Save folder on your storage card to get immediate access to the POIs it contains.

**EXAMPLE:** Copy an OV2 file named 'Speedcams' to Storage Card\CoPilot\Save. The next time you do a POI search you will see 'Speedcams' as a POI Type in the Custom Category.

## Trip Transfer

When you use the **Trip** download option, CoPilot transfers whole trips to your Smartphone. The trip you create, including its itinerary, is transferred along with the surrounding data corridor, and it becomes the current trip.

The **Trip** download option creates a .TRP file that is placed in the Save directory in the CoPilot installation folder on your Smartphone. Subsequent downloads will add more .TRP files to this folder. The number of trips that may be stored is limited only by the available memory on your Smartphone.



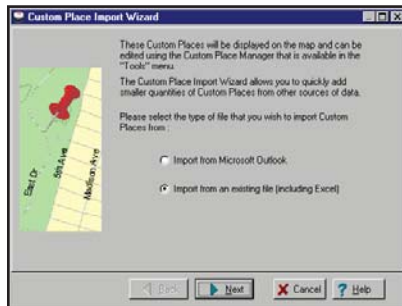
## Importing Custom Places

CoPilot's Custom Place Import Wizard enables you to import addresses from your Outlook Contacts database, an Excel file, or text file. (If you are using another type of database or contact manager, you can export your contacts/ locations to an Excel or text file before importing them into CoPilot.) These points are then added to CoPilot's POI database in a category and type of your choice (the default category is "Custom"). Once in the database, they are displayed on maps as pushpins and included in search results when you search for points of interest on your Smartphone or in the Trip Planner window on your desktop/laptop.

**NOTE:** CoPilot now allows importing of multiple POIs with the same name (e.g. an entire database of "Starbucks").

To access the Wizard, choose **Import Custom Places** from the **Tools** menu in Planning Mode on the desktop, then follow the step-by-step instructions given by the Wizard.

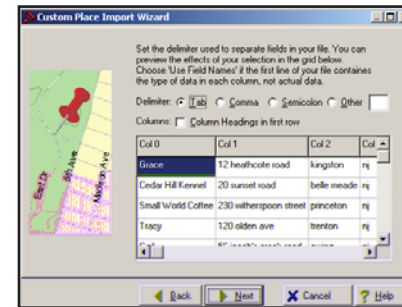
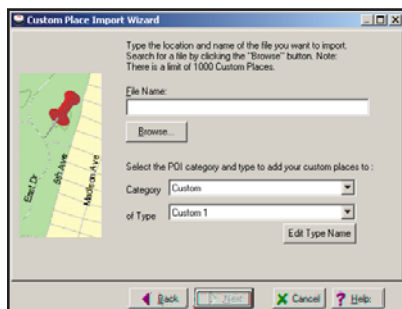
### Steps for Importing:



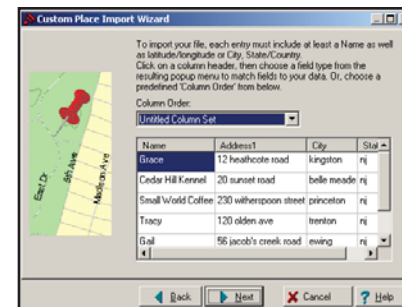
1. In Planning Mode on your desktop/ laptop, choose **Import Custom Places** from the **Tools** menu to open the Import Custom Places Wizard.

2. Choose **Import from Microsoft Outlook** or **Import from an existing file** (this can be a .txt or an Excel file). Click **Next**.

3. In the next Wizard screen, type the path to the file you want to import or **Browse** for it, and use the **Category** pick list to indicate a POI category for your imported places (by default they are assigned to "Custom"). You can also choose a **Type** from the pick list. To edit the type name, highlight it on the pick list and click **Edit Type Name** below. Click **Next** when ready.



4. In the next screen you'll see the data from your file sorted into columns. If the columns you see in the screen have not sorted the address data correctly, you need to indicate which delimiter CoPilot should recognize when it separates the fields in your file into columns. Each field — e.g. name, street address, city, state, etc. — needs to be separated by a delimiter such as a tab, semicolon, or comma. If your file uses a delimiter other than a comma, tab, or semicolon, click **Other** and type the delimiter in the box to the right. If the first row of your file consists of column headings, you should check **Column headings in first row**. Click **Next** when ready.

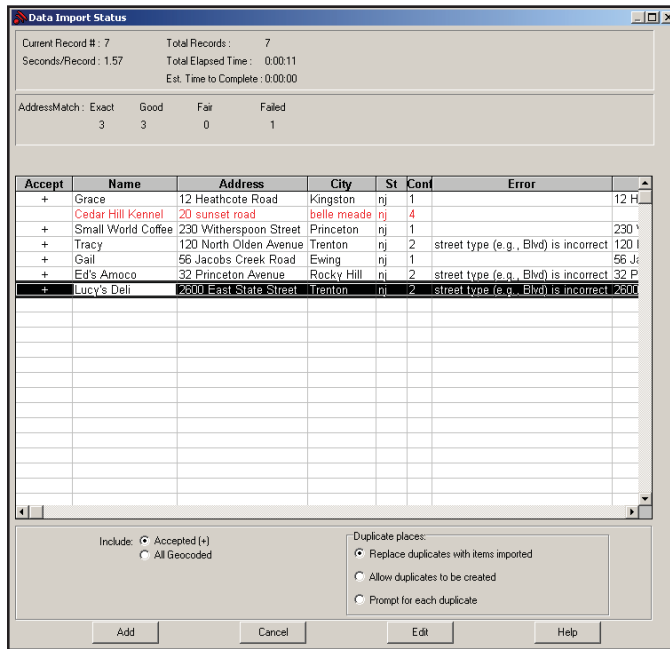


5. Now, following the instructions on the screen, click each column heading and match the column headings with your data. To be accepted by CoPilot, each imported place must have at least four fields: **Name, Address 1, City, and State**. Click **Next** when ready.



6. In the next screen, following the instructions, you can assign a name to the set of columns you just defined to save you time the next time you import addresses.

To skip this step, uncheck **Save the columns as a new set**. Click **Finish**.



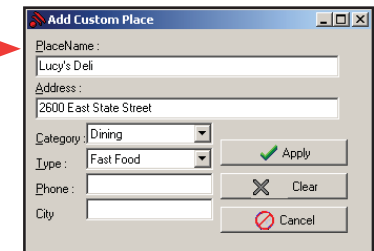
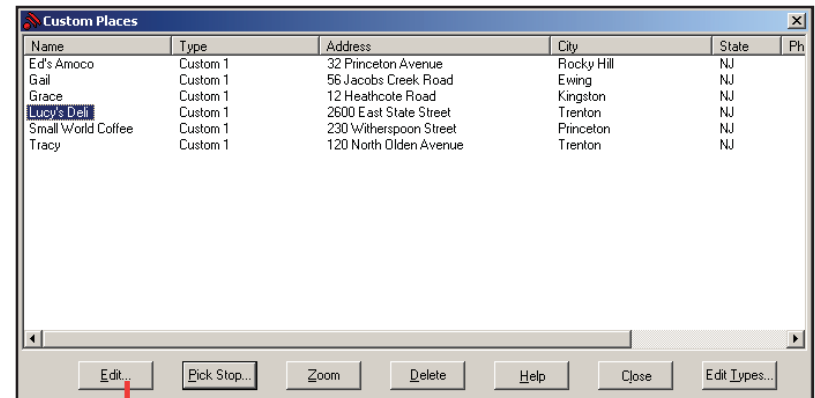
- When processing is finished, the Data Import Status window shows you how many places in your file were matched with addresses in the CoPilot database. A plus sign in the **Accept** column indicates a match. Places that failed to match appear in red and do not have a plus sign.
- To edit a failed or incomplete match, highlight it and click **Edit** (see *Editing Custom Places*, next page). POI addresses can also be edited after they are added to the database using the Custom Place Manager.
- When you are satisfied with the list of addresses, click **Add** to add these places to the CoPilot database.

Options below the list let you 1) choose whether to add all addresses on the list to the database, or just those that were accepted, and 2) determine how CoPilot will handle any address that duplicates one already in the database.

## Editing Custom Places

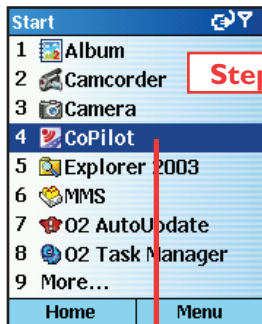
After custom places have been added to the database, they can be edited at any time. Select **Manage Custom Places** from the **Tools** menu, then highlight the custom place you wish to edit, click **Edit**, and make your changes. Click **Apply** when finished.

**NOTE:** By default, addresses entered as Custom Places are assigned to the Custom POI category. You can change this assignment at any time by selecting another **Category** from the drop-down pick list as you edit.



# Using CoPilot for Guidance

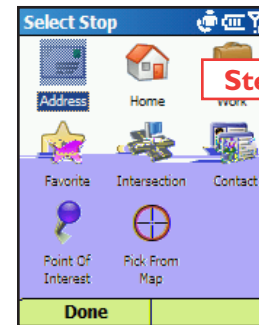
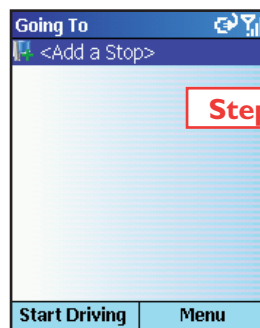
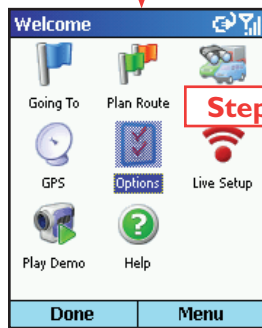
In CoPilot's Guidance Mode on your Smartphone, you will receive turn-by-turn route guidance information as you travel. For your safety, the Safety View screen will hide maps when your speed exceeds 10 m.p.h. to avoid distractions.



1. To launch CoPilot, select your Smartphone's **Start** soft key, then navigate to the CoPilot application in the **Start** menu and press the **Action** key.



2. In the *Welcome* screen, select **<Going To>**.
3. Press the **Action** key with **<Add a Stop>** selected in the *Going To* screen to enter a destination.



4. The *Select Stop* screen gives you eight ways to enter a destination. You can:
  - 1 Enter a new **Address**
  - 2 Enter your **Home** address
  - 3 Enter your **Work** address
  - 4 Select a **Favorite**
  - 5 Enter an **Intersection**
  - 6 Enter an **Outlook Contact**
  - 7 Search for a **Point of Interest (POI)**
  - 8 **Pick From Map**

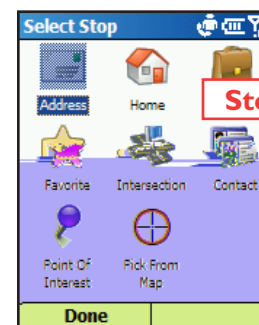
Press the **Action** key on the option you want (these options are described on the following pages).

There's no need to enter a starting location. CoPilot uses GPS positioning to determine your location automatically.

When you have entered at least one stop in the *Going To* screen, you can press the **Start Driving** soft key and CoPilot will begin guiding you with on-screen and spoken directions.

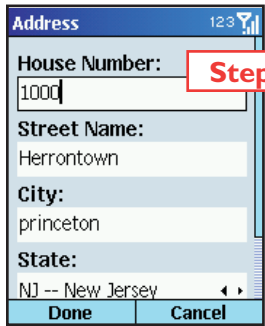
If you take a wrong turn or decide to take a different route than the one CoPilot has generated, no problem! CoPilot will almost instantly recalculate new directions from your current position. You simply won't be able to get lost using CoPilot!

## Address Entry



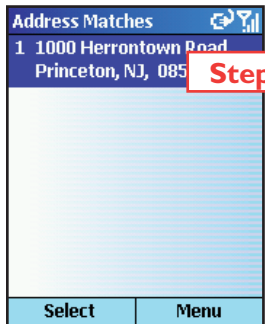
1. Select **Address** in the *Select Stop* screen to enter a city or ZIP code and (optionally) a street address as a stop.





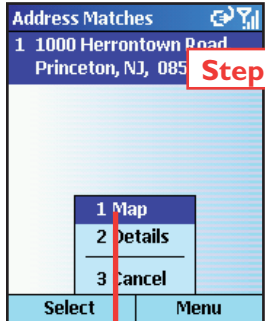
2. In the *Address* screen, enter a **Street Name** with or without a **House Number**, and a **City** or ZIP Code. Choose a **State** from the pick list. **NOTE:** Street address entry is optional, if you like you can enter only a city and state or a ZIP code.

To return to the *Select Stop* screen to start over, press **Cancel**.



3. The *Address Matches* screen will display a list of matches that were found in the CoPilot database. Highlight your choice and press the **Select** soft key to continue.

To return to the *Address* screen, press the **Menu** soft key and select **Cancel**.



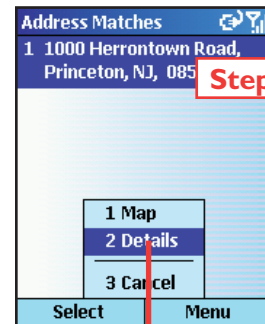
- 3a. To see any match on the map, press the **Menu** soft key and select **Map**.



- 3b. In the map screen, to zoom your view of a place in closer or out farther away, press the **Menu** soft key and select one of the zoom options.

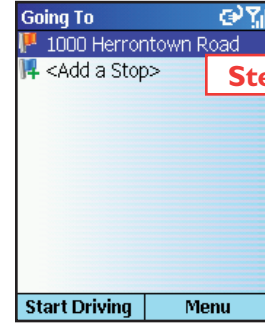
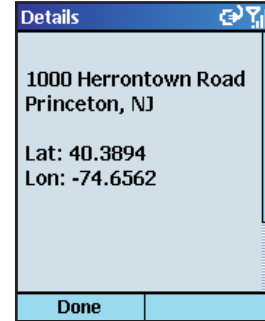


- 3c. For quick zooming, pressing the **Action** key will display zoom arrows. Tap up on the Action key to zoom in or down to zoom out — these actions can be repeated until the highest or lowest zoom level is reached.



- 3d. To display the latitude and longitude of any match, press the **Menu** soft key and select **Details**.

Press the **Done** soft key to return to the *Matches* screen.



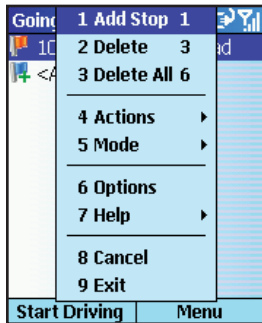
4. You will see the destination you entered in the *Going To* screen.

Press the **Start Driving** soft key to begin receiving guidance, then start driving!

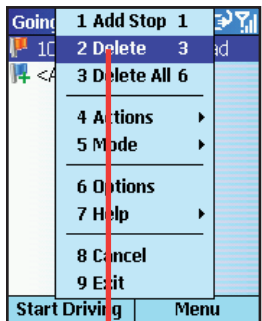
See *Start Driving!* on p. 21 for a description of CoPilot guidance screens.

## Stop Menu Options

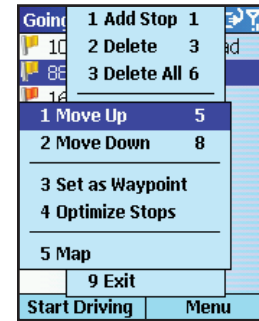
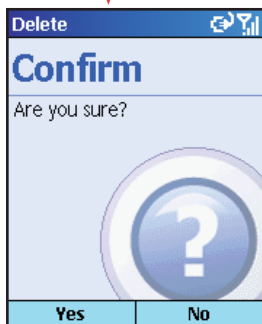
In the *Going To* screen, press the **Menu** soft key to access options that include adding, deleting, moving, editing, and optimizing your stops.



To add another destination, choose **Add Stop** from the menu. (This is an alternate way to do this, you can also simply highlight **<Add a Stop>** in the **Going To** list and press the **Action** key.)



Select **Delete** to delete the highlighted stop, or **Delete All** to clear all stops from the list (you will be asked to confirm this action).



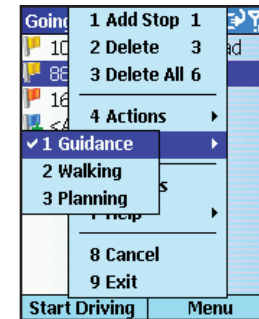
Select **Actions** > to access more stop options:

> **Move Up/Down** — Change the order of stops on your trip by moving the highlighted stop up or down on the list.

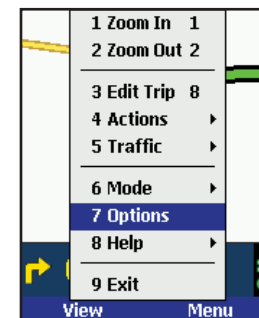
> **Set As Waypoint** — Turn the highlighted stop into a waypoint. The purpose of waypoints is to guide your route along roads you prefer. See p. 24 for more on waypoints.

> **Optimize Stops** — Reorder stops on the list to achieve the most efficient route, keeping your final destination the same.

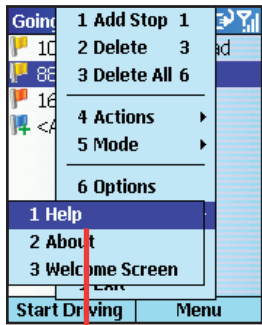
> **Map** — See the highlighted stop on the map.



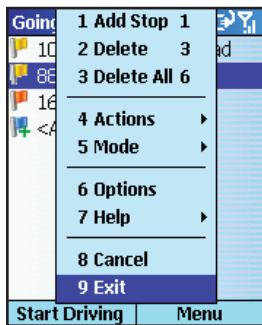
Select **Mode** to switch between **Guidance**, **Walking**, and **Planning** mode — see p. 29 for a description of each mode.



Select **Options** to change routing options — see p. 25-29.

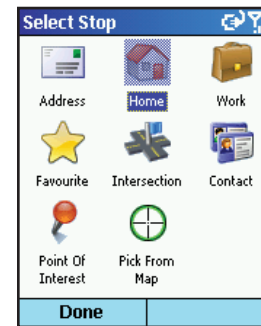


Select **Help** and choose **Help** for on-screen instructions about basic CoPilot features, or **About** for version information about CoPilot.



Select **Cancel** to close the menu, **Exit** to close the CoPilot application.

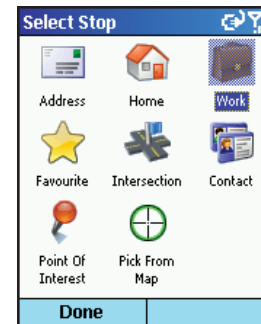
## Entering Your Home Address



To program your home address for quick trip entry, select **Home** in the *Select Stop* screen and enter your home address as you would a new address (p. 14). The next time you want to enter your home address as a stop, just select **Home** in the *Select Stop* screen and your address will be automatically entered.

To edit your home address, select **Favorite** in the *Select Stop* screen, highlight your home address on the list, then press the **Menu** soft key and choose **Edit**. Or, select a different Favorite from the list and choose **Set as Home** from the menu.

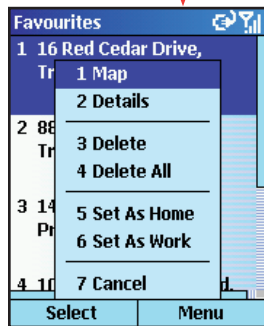
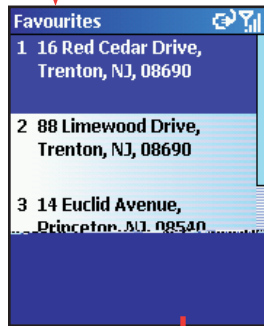
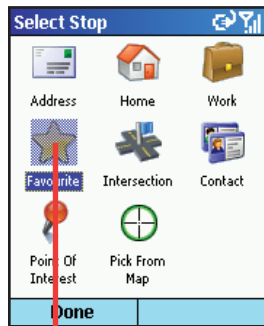
## Entering Your Work Address



To program your work address for quick trip entry, select **Work** in the *Select Stop* screen and enter your work address as you would a new address (p. 14). The next time you want to enter your work address as a stop, just select **Work** in the *Select Stop* screen and your address will be automatically entered.

To edit your work address, select **Favorite** in the *Select Stop* screen, highlight your work address on the list, then press the **Menu** soft key and choose **Edit**. Or, select a different Favorite from the list and choose **Set as Work** from the menu.

## Favorites



CoPilot automatically places every stop you enter on a list of favorite places for future quick trip entry. To enter a favorite as a stop, first select **Favorites** in the *Select Stop* screen. In the next screen, choose one of the places on the scrollable list, then press **Select**.

### MENU OPTIONS:

Press **Menu** at the bottom of the screen to access these options:

**Map** — Zoom to the highlighted favorite.

**Details** — View or edit address data for the highlighted favorite.

**Delete** — Delete the highlighted favorite.

**Delete All** — Delete all favorites from your favorites list.

**Set as Home** — Set the highlighted favorite as your Home address for quick trip entry.

**Set as Work** — Set the highlighted favorite as your Work address for quick trip entry.

**Cancel** — Return to the *Select Stop* screen.

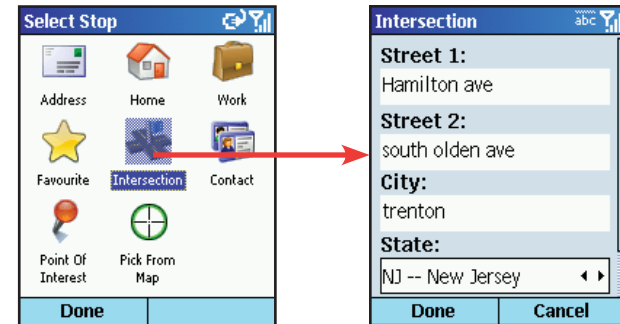
**NOTE:** When the number of Favorites on your list reaches 50, each new address will replace the address that has been inactive for the longest period of time.

### To Save Your Current Location As a Favorite:

You must be receiving GPS data to save your current location as a favorite. In any display screen press the **Menu** soft key, then select **Actions > Save GPS Location**.

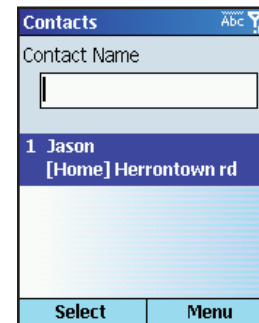
## Intersections

Choose **Intersections** in the *Select Stop* screen to enter the intersection of two roads as a stop on your route. Intersections are entered just like addresses (see p. 14), except that instead of a house number you enter a “First Street” and “Second Street”. You can name this location if you like.



## Entering an Outlook Contact

CoPilot allows you to link directly to Microsoft® Pocket Outlook to retrieve address information. Within moments, you can enter a contact's home and/or work address as your destination.



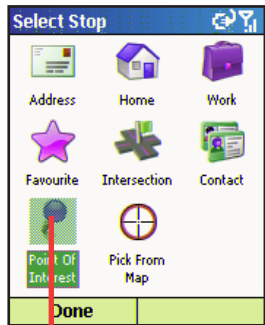
To enter a contact, first select **Contacts** in the *Select Stop* screen. In the next screen you'll see your list of contacts.

To select a contact, enter the first few letters of the contact's first or last name. The sub-menu will display matches. Highlight the contact you want, then press **Done**.

Press **Menu** and select **Cancel** to return to the *Select Stop* screen. To **view or edit a contact's address**, select **Details**.

## Finding Points of Interest

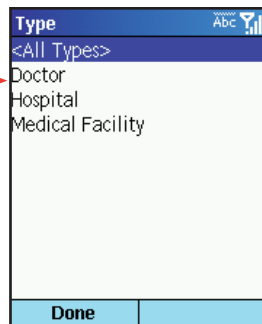
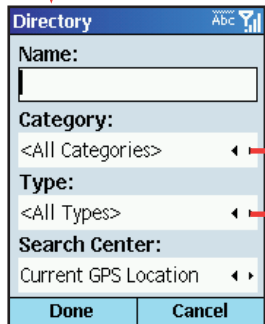
CoPilot enables you to search for points of interest (POI) such as gas stations, hotels, restaurants, visitor attractions, etc. within the region for which map data was downloaded from your desktop/laptop computer. You can then choose a destination from the list of search results.



Select **Points of Interest** in the *Select Stop* screen to search for POI.

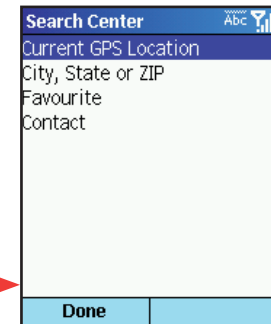
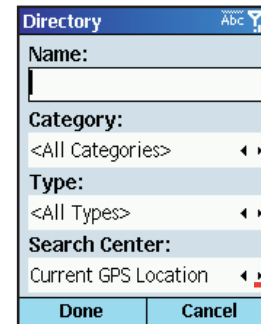
To narrow your search and cut down on the time it takes, you can (optionally) type the first few letters of a place you have in mind in the **Name** field.

In the *Find POI* screen you also have the option to choose a **Category** and **Type** of POI from the pick lists provided (use the arrows).

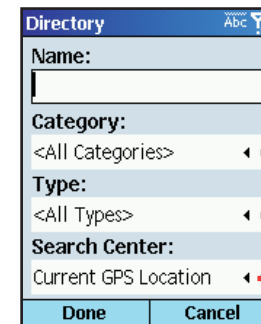


From the **Search Center** pick list, choose an area for CoPilot to search (use the arrows). Options are:

- **Current GPS Position** (search an area around your current location)
- **Town or ZIP Code** (in the next screen, enter a town and state or ZIP code)
- **Recent** (in the next screen, choose a location you recently entered as a destination)
- **Contact** (in the next screen, choose an address from your Contacts list)

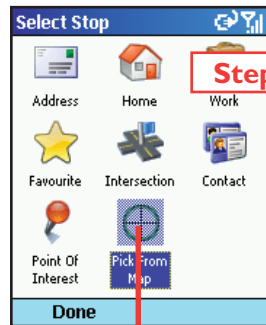


Press **Done** to begin the search. A list of POI will be generated. To add a POI on the list as a stop, select it and then press **Done**. Or you can press **Menu**, then **Map** to zoom to it on the map, **Details** to see more address information, or **Call** to make contact by phone.

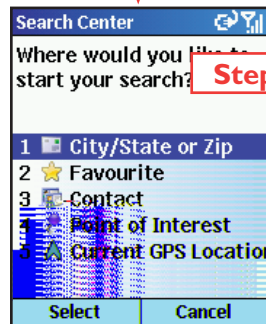


## Picking Stops From the Map

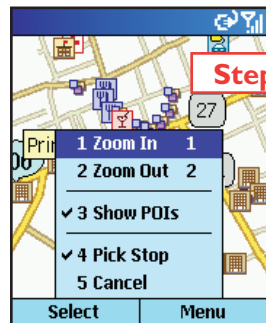
CoPilot enables you to pick a stop off the map when you don't know the exact address of your destination.



1. Select **Pick from Map** in the *Select Stop* screen.



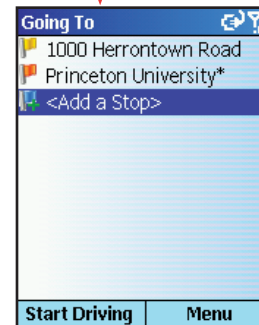
2. CoPilot will prompt you to enter a location where you can start searching for the place you have in mind. Highlight one of the options, press **Select**, and enter any necessary information. Choose **Current GPS** to zoom to your current location.



3. CoPilot will zoom to the place you enter, and a crosshair cursor will appear on the map. Use the menu to **Zoom In** or **Zoom Out**. Check **Show POIs** on the menu to display points of interest.



4. With the cursor on the place or address you want to pick, press **Select** to add this place as a stop. Places picked from the map are marked by an asterisk in the stop list.



## Start Driving!

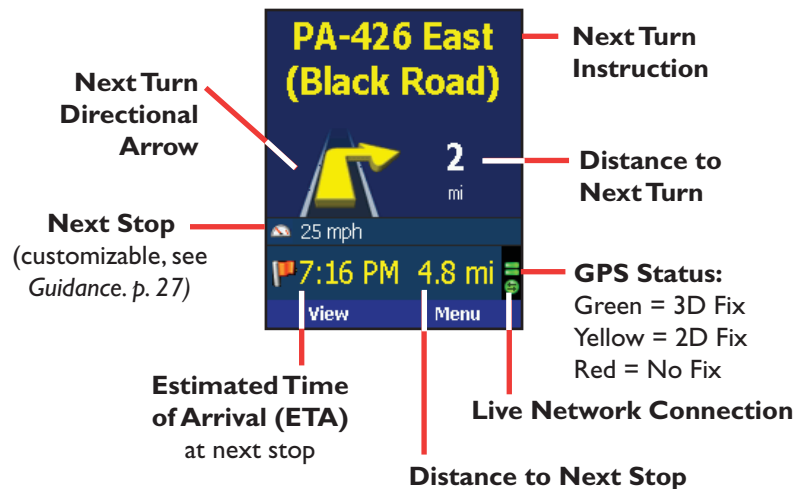
Once you have entered at least one stop in the *Select Stop* screen, you're ready to start driving with CoPilot! You'll receive turn-by-turn directions and maps to guide you safely to your destination. As you drive, CoPilot's dynamic directions will instantly recalculate your route if you take a wrong turn or decide to go a different way. In addition, CoPilot can calculate a detour from your current position, giving you the option to accept the new route or to cancel it and return to your original route at any time.

CoPilot speaks directions out loud to you, and also displays them on your Smartphone screen. There are three guidance screens to choose from: 1) **Safety View**, 2) **Map** (four views), and 3) **Itinerary**.

## Safety View

The **Safety View** displays a text-only screen when your speed exceeds 10 m.p.h. and is the recommended view for safe driving. When you're within .6 miles of a turn or driving less than 10 m.p.h., CoPilot automatically switches to the map screen.

The Safety View can be accessed from other guidance screens by pressing the **View** soft key and choosing **Safety View**.



## Map Views

The CoPilot map screen displays when you are traveling at less than 10 m.p.h. or .6 miles before each turn. It combines a detailed map display with concise text instructions.

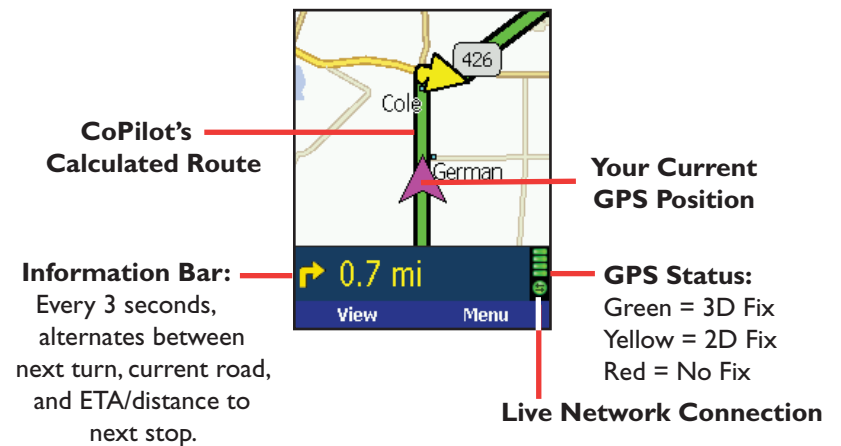
In any of the four map views, your current GPS position is displayed and you are tracked in real time as you drive. To choose a map view, press the **View** soft key and make your selection:

**Next Turn Map** — Frames your current location up to the next turn on your route.

**Where Am I Map** — Frame a close-up view of your current location.

**Next Stop Map** — Frames your route from your current location to the next stop.

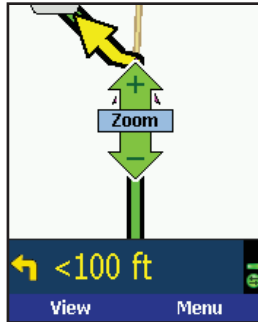
**3D Map** — Changes CoPilot's two-dimensional default display mode to a three-dimensional perspective based off an isometric camera angle.



## Zooming and Shifting Your Map View

To zoom your view of the map in or out, press the **Menu** soft key and select **Zoom In** or **Zoom Out**. Or, press the **Action** key to display the zoom arrow, then press up to zoom in or down to zoom out. This action can be repeated until the minimum or maximum zoom level is reached.

To navigate to another area of the map, use the **Action** key as a navigation pad: press up, down, left, or right as many times as you like.



## Itinerary View

The Trip Itinerary is a scrollable set of driving directions for the current trip. Individual roads on your Itinerary can be avoided using the **Menu** in this screen — highlight the road to avoid and select **Actions > Avoid Road**.

Turn Instruction	Mile
PA-89 South (St...)	0.1
↘ Cole Road	2.1
↘ PA-426 East (Bla...)	0.3
↘ PA-426 East (Fin...)	2.5
Findley Lake, Fin...	

7:23 PM 5.9 mi

View Menu

Distance between turns

Direction of turns along your route

Roads for upcoming turns

## Trip Editing

To make changes to your trip at any time from the guidance screens, press the **Menu** soft key and choose **Edit Trip**. This returns you to the *Going To* screen where all your stops are listed. Highlight a stop, press **Menu** again, and select a trip editing option from the menu:

**Add Stop** Add a stop after the highlighted stop.

**Delete** Delete the highlighted stop.

**Delete All** Delete all stops on the list.

**Actions > Move Up:** Moves the highlighted stop up on the list.

**Move Down:** Moves the highlighted stop down.

**Set as Waypoint:** Turns a stop into a waypoint (see p. 24).

**Optimize Stops:** Reorganizes stops in the most efficient order, keeping the last stop the same. This action is not reversible.

**Map:** Zooms to the highlighted stop on the map.

**Mode >** Opens the Mode menu — see p. 29.

**Options** Opens the **Options** menu to change routing, mapping, and guidance settings — see p. 25-29.

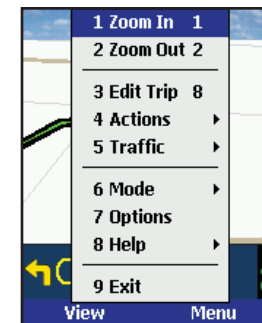
**Help > Help:** Accesses CoPilot Help topics.

**About:** Shows CoPilot version number and copyright.

**Welcome Screen:** Returns to the CoPilot Welcome screen.

**Cancel** Returns you to the guidance screen.

**Exit** Closes CoPilot.





## Menu Options on the Road

From any guidance screen, you can zoom your map view in and out, edit your trip, calculate a detour, save your location as a favorite, and more. Press the **Menu** soft key and select any of the following options:

**Zoom In/Out** In the map screen, zooms your view in/out.

**Edit Trip** Navigates to the *Going To* screen for trip editing (see p. 22).

**Actions > Detour:** Calculates an alternate route.

**Cancel Detour:** Cancels a calculated detour and returns to the original route.

**Save GPS Location:** Saves your current GPS location as a Favorite so you can enter it as a stop in the future.

**Pick Stop:** Enables you to enter a stop by picking it directly from the map — see p. 20.

**Traffic >** Displays real-time traffic information settings if this service is available in your region and included with your CoPilot purchase. See *Real-Time Traffic Information*, p. 39-40.

**Mode >** Opens the Mode menu — see p. 29.

**Options >** Opens the **Options** menu to change routing, mapping, and guidance settings — see p. 25-29

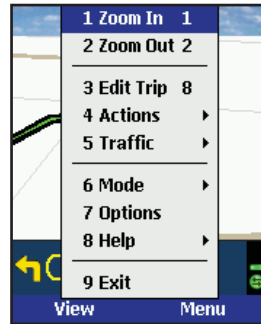
**Help >** Displays CoPilot Help topics.

**Exit** Closes CoPilot.

## Hotkeys

CoPilot uses the number pad (0-9) as “Hotkeys” that are directly linked to often-used features. For example, while driving in Guidance Mode, you can find a Detour by pressing **3** on the number pad instead of pressing **Menu > Actions > Detour**.

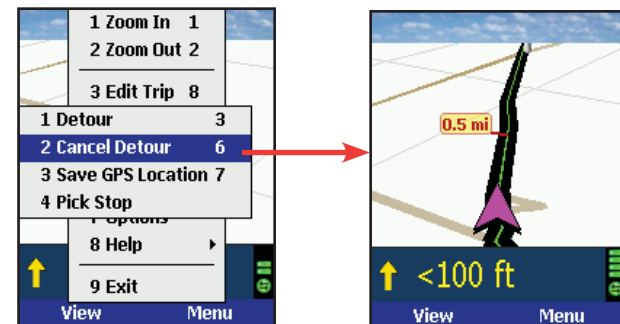
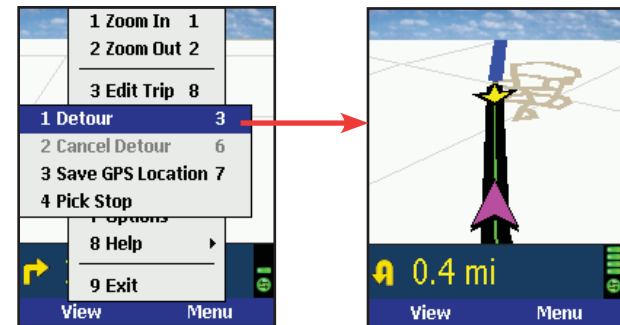
You can determine which features are tied to Hotkeys by pressing **Menu** and looking to the right of each menu item.



## Calculating a Detour

If for any reason you find that you want to take an alternate route around a particular road segment — no problem! CoPilot can calculate a detour on command, tell you how much longer it will be, and then give you the option to accept the new route or cancel it and return to the original route at any time.

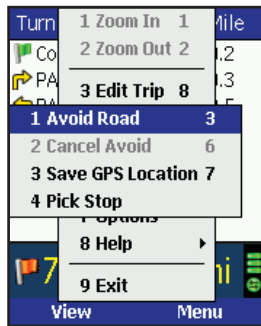
To have CoPilot generate a detour, press the **View** soft key in either the Safety or Map screen. Then select **Actions > Detour** or just hit “**3**” on the keypad. You will see the new route appear on the map (your old route will be drawn in blue). To reject the new route and return to the original route at any time, select **Actions > Cancel Detour** or hit “**6**”.



## Avoiding Roads

To avoid an individual road and have CoPilot calculate another route around that road, you must be in the **Itinerary** screen. From there, find the road you want to avoid in the scrollable list and highlight it, then press the **Menu** soft key and select **Actions > Avoid Road**.

To cancel any road preferences that have been set and return to your original route, select **Actions > Cancel Avoid**.



## Waypoints

“Waypoints” are not treated like stops in the Itinerary for your trip, their purpose is to guide CoPilot route calculations along roads that you choose.

To change a stop to a waypoint, highlight the stop in the *Going To* screen, press the **Menu** soft key, then select **Actions > Set as Waypoint**. On the stop list, the flag icon next to this stop will be replaced by a round icon with an arrow pointing to the right.

To change a waypoint back to a stop, choose **Actions > Set as Stop** from the menu.

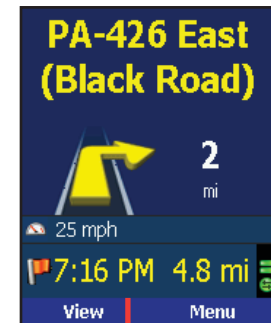
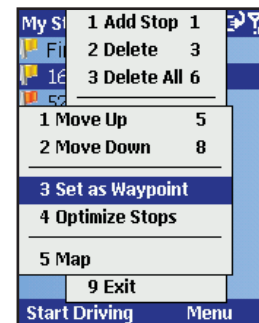
CoPilot ignores waypoints when calculating the ETA and distance to the next stop, so setting waypoints can be used to get the ETA and distance to a stop that is not your next stop (see *Getting ETA's and Distances* below).

## Getting ETA's and Distances

The estimated time of arrival (ETA) and distance to your next stop will always be shown at the bottom of the SafetyView screen. To bring up the SafetyView screen, enter one or more stops, press the **Start Driving** soft key, then select **SafetyView** from the **View** menu.

If your trip has multiple stops and you want to know the ETA for a destination that is not the next stop, designate the stops between your current location and the target stop as waypoints — highlight each one in the *Going To* screen, then press the **Menu** soft key and choose **Actions > Set as Waypoint**. When all intermediate stops have been changed to waypoints, the SafetyView screen will display the ETA to your final destination.

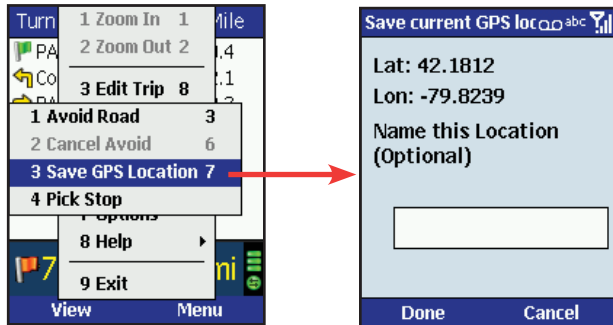
The waypoints you created can be easily changed back to stops — highlight each one, press the **Menu** soft key, and select **Actions > Set as Stop**.



ETA and Distance to Next Stop

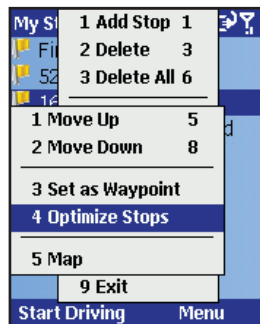
## Saving a Current Location as a Favorite

To save your current location as a Favorite, press the **Menu** soft key in the SafetyView or Map screen, then select **Actions > Save GPS Location**.

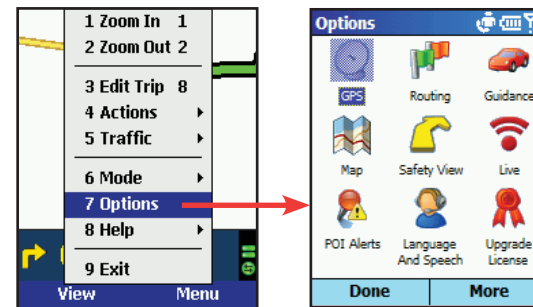


## Optimizing Your Stop Order

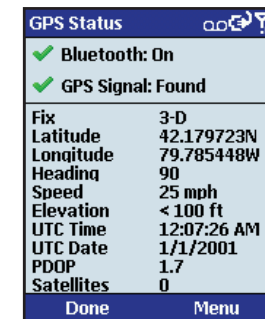
To rearrange the stops on your trip in the most efficient order, press the **Menu** soft key in the *Going To* screen, then select **Actions > Optimize Stops**. You must have at least three stops to optimize — the destination always remains the same.



## General Options



Press the **Menu** soft key in the *Going To* screen or any guidance screen, then select **Options** to access a menu of CoPilot program options and settings.

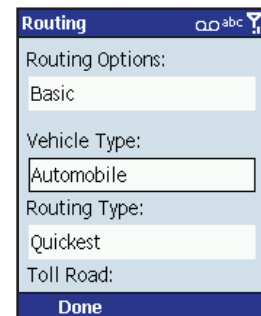


## GPS

Select **GPS** in the **Options** menu. The **GPS** screen provides tools for setting up and viewing your Smartphone's GPS functionality.

In the **GPS** screen, press the **Menu** soft key and select **Turn On Bluetooth** to turn your phone's Bluetooth connection on from within CoPilot. Note that some phones can only have Bluetooth turned on through the Windows settings controls.

Press the **Menu** soft key, then **Search for GPS** to have CoPilot search for your Smartphone's GPS receiver. When your receiver is detected, you'll see the name of the receiver along with any other Bluetooth devices. Highlight the receiver and press **Select**.



## Routing

Select **Routing** in the **Options** menu. **Basic** options in the *Routing* screen are:

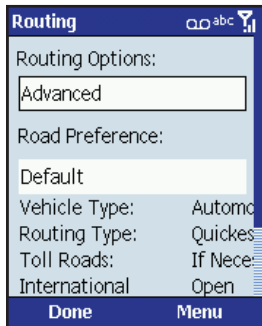
**Vehicle Type** — Options are **Automobile** or **RV**. RV routes favor major roads, incorporate 12'6" bridge height restrictions (*US only*), and avoid sharp turns and U-turns wherever possible.

**Routing Type** — CoPilot's **Quickest** routing type is based on the most practical route in terms of road quality, terrain, and urban/rural classifications. **Shortest** routing travels the least distance where possible while maintaining some level of practicality.

**Toll Avoidance** — Select **Always Avoid** to always avoid toll roads even when the resulting route is impractical or out-of-the-way, **Use if Necessary** to avoid tolls where practical, or **No Restriction** to ignore toll status of roads.

**International Borders Open** — (U.S. only) Check to have CoPilot route across international borders. When this option is turned off, your route won't cross borders even when it would be more practical.

**Show London Congestion Zone Warning** — (U.K. only) Display a warning when your route will take you into the London Congestion Zone.

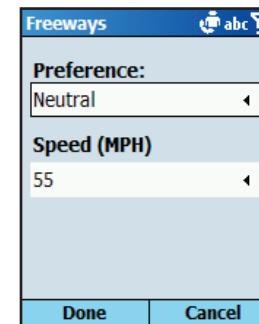
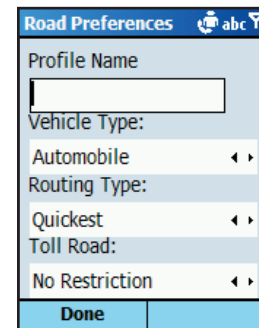
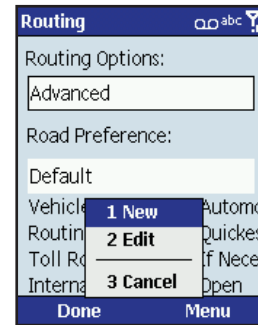


### Advanced Routing Options

Using CoPilot's **Advanced** routing options, you can create combinations of route settings and road preferences and save them in separate profiles for quick recall.

**NOTE:** Advanced routing options include the ability to alter road preferences and road speeds for different classes of roads that CoPilot recognizes as it calculates routes. Be aware that any change you make applies to **ALL** roads in that class. Even minor changes to road preferences may fundamentally alter how CoPilot calculates routes, and road speeds affect your ETA.

To access advanced options, set **Routing Options** to **Advanced** at the top of the *Routing* screen. All advanced routing options will be displayed. At the top of these options you'll see a **Road Preference Profile** pick list of all existing profiles (if there are any). Settings for the displayed options will reflect the profile that is selected in the pick list.



### Creating a Road Preference Profile

To create a new profile, press **Menu > New**. Enter a new **Profile Name** and set the basic and advanced routing options the way you want them for this profile.

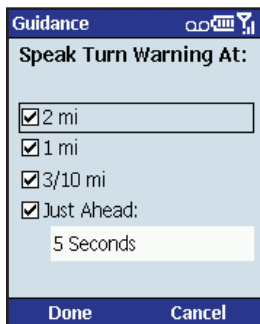
The **Take Breaks** option affects your ETA calculation; for example, if you take a 30 minute break for every 4 hours of travel, CoPilot will adjust the ETA for a 5 hour trip to 5 1/2 hours.

Check **Confirm profile when routing** to have CoPilot prompt you to choose a profile each time a new route is calculated.

To set avoid/favor preferences and average road speeds for an individual road class, select a road class under **Edit Preferences for**. In the *Freeways* screen, use the pick lists to assign a preference and average road speed.

**Preference** — At the extremes, **Strongly Avoid** will push the route away from the road class while **Strongly Favor** will pull the route to the road class. They do not cause road classes to become completely blocked or routing to exclusively rely on road classes.

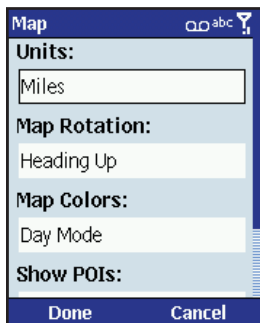
**Speed** — Change the average road speed that CoPilot uses for every road in this class when calculating your ETA. Press **Done** in each screen as you are finished with it. The new profile you created will now be available in the **Road Preference Profile** pick list.



## Guidance

Select **Guidance** in the **Options** menu.

In the *Guidance* screen, the settings under **Audio Turn Warnings** determine how often and where CoPilot will give you next turn information out loud. All, none, or some boxes can be checked. A pick list gives the options for **Just Ahead**: by default you will be alerted **5 sec/100 ft** before every turn (5 seconds or 100 feet, whichever is closest), but you can choose to have CoPilot speak to you sooner (from 2-8 seconds before each turn, or 100 feet).



## Map

Select **Map** in the **Options** menu. Settings in the *Map* options screen are:

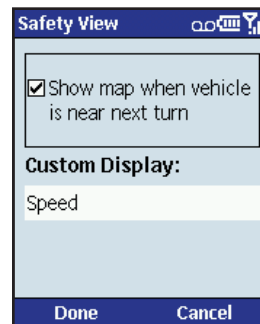
**Unit** — Use the pick list to choose **Miles** or **Kilometers** as the unit of distance.

**Map Rotation** — Choose **Heading Up** to have the map display always track your position moving upward, or **North Up** to always maintain north at the top of the map as you drive.

**Map Colors** — CoPilot offers **Day** and **Night** display modes. Colors are darker and glare is reduced in Night mode. Choose **Automatic** to have the mode switch automatically according to time of day.

**Display POIs** — Choose when CoPilot will display Points of Interest (POI) on the map. Select **Always** to always have POI displayed. If your map is too cluttered, you may want to select **Never** or **When Stopped**.

**Display Turn Restrictions** — When checked, one-way streets and other turn restrictions are noted on the map.



## Safety View

Select **Safety View** from the **Options** menu.

Use this option to turn map toggling on/off when using the SafetyView display.

The pick list under **Custom Display** includes display options for the customizable data line in the SafetyView guidance screen. You can choose to have this line display the next stop (destination), current road, nearest crossroad, nearest major road, nearest town, current time, ETA, current speed, elevation, or heading.

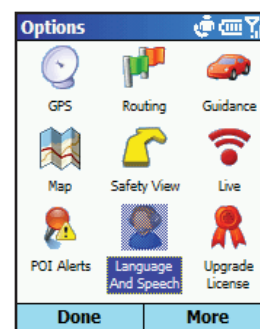


## Live

Select **Live** from the **Options** menu.

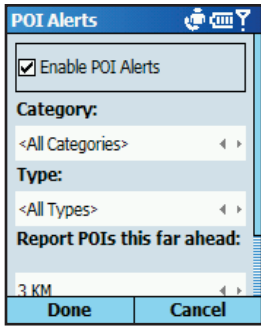
CoPilot Live allows you to maintain two-way communication with drivers who are using CoPilot and to actually see where they are currently located. You can do this from our CoPilot Live web page.

See *CoPilot Live Communications*, p. 38-39, for a description of these features.



## Language & Speech

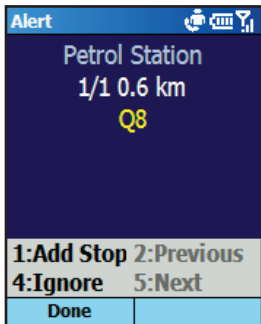
See *Changing the Voice Options at Any Time*, p. 5.



## POI Alerts

Select **POI Alerts** in the **Options** menu.

To toggle the POI Alerts feature on or off, press the **Action** key on **Enable POI Alerts**. This screen also lets you change settings that determine when and where alerts will be activated.

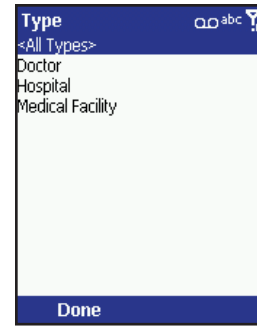


When POI Alerts is enabled, CoPilot will alert you with a verbal prompt each time you approach a Point of Interest on or near your route. A screen alert will also appear (like the one shown at left), giving you the option to:

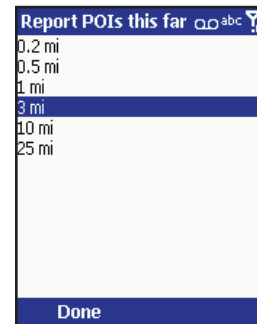
- 1- Add the POI as a stop on your route
- 2- Ignore (you can also press **Cancel**)
- 3- Go back to the previous screen alert
- 4- Move forward to the next screen alert



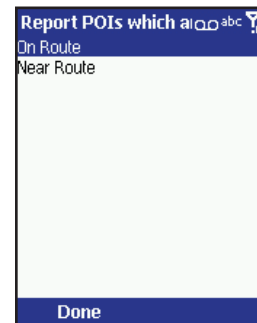
You can select one category of POI that you want to be alerted to from the **Category** list.



You can select one type of POI that you want to be alerted to from the **Type** list.



In the **Report POIs this far ahead** screen, set the distance at which you would like to receive an alert as you approach each POI. (The CoPilot default is .2 miles.)



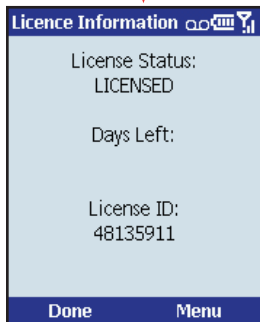
In the **Report POIs which are** screen, you can increase the number of alerts you receive by selecting **Near My Route**.

(By default, CoPilot detects only POIs that are directly on your route.)



## Upgrade License

Select **More...** at the bottom of the **Options** menu, then select **Upgrade License**. This screen enables you to upgrade your current version of CoPilot.



## Backlight

Select **Backlight** from the **Options** menu.

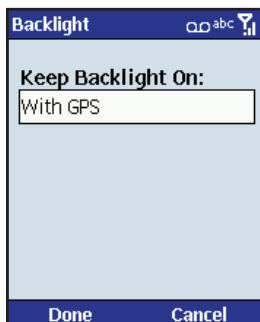
To keep your phone's backlight on in order to see CoPilot's on-screen maps and directions, you can choose from these options:

**With GPS** — Backlight is on whenever CoPilot is receiving GPS signals.

**Near Turn** — Backlight comes on when you approach your next turn.

**Always** — Backlight always on when CoPilot is running.

**Never** — Backlight is never on when CoPilot is running.



## CoPilot Modes

CoPilot has three modes of operation on your Smartphone. To switch modes, press **Menu > Mode** in the *Going To* screen or any guidance screen.

### Guidance Mode

In Guidance Mode, you enter one or more destinations, then press **Start Driving** to start driving and receive guidance. This mode provides you with on-screen and spoken driving directions and other information relevant to your trip, such as estimated time of arrival (ETA) and distance to the next stop.

To receive driving directions and other data, you must have a GPS receiver that CoPilot recognizes and the receiver must be in a good position to receive signals.

### Walking Mode

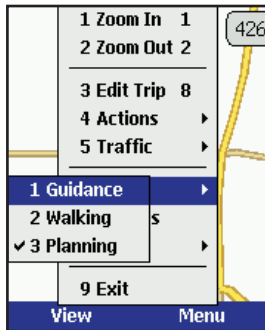
Take CoPilot with you wherever you go! Walking Mode provides an as-the-crow-flies distance and direction line to your destination, directions that are perfect for walking. A GPS receiver must be attached and receiving signals.

### Planning Mode

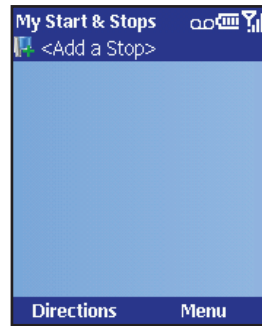
Planning Mode lets you use your Smartphone as a pre-trip planning tool or easy-to-use reference guide. Planning Mode lets you view static maps and directions without the need for a GPS receiver.

# Trip Planning On Your Smartphone

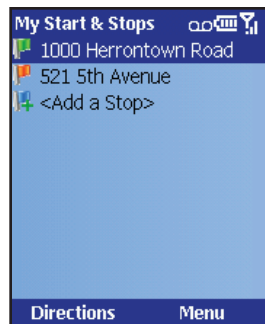
You can use CoPilot on your Smartphone for trip planning whether or not the GPS receiver is connected and receiving data. In Planning Mode you can run a trip even when you're not in your car. You'll get driving directions and maps to use as a reference before your trip begins.



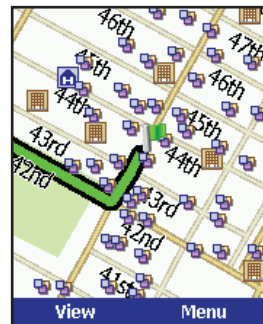
1. First turn on your Smartphone and launch CoPilot. In the *Going To* screen, press **Menu** > **Mode** and select **Planning**.



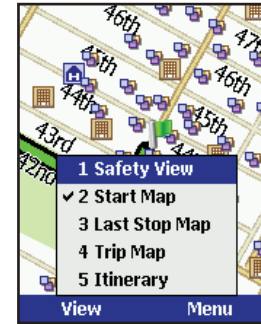
2. The *My Starts & Stops* screen will open. Press the **Action** key on **<Add a Stop>**, then add stops to your trip.



3. The first stop in the **My Starts & Stops** list is the starting point of your trip. Press the **Directions** soft key when all stops have been entered to generate an Itinerary.



4. Now you'll see your route on the map.



5. In the Map screen, the **View** menu gives you a choice of three map views:

- **Start Map** (zoomed to your starting location),
- **Last Stop Map** (zoomed to your final destination), and
- **Trip Map** (zoomed out to show the whole route).

Turn Instruction	Mile
5th Avenue	0.1
West 42nd Street	0.4
7th Avenue	1.5
7th Avenue South	0.5
Varick Street	0.4
Holland Tunnel	2.1
NJ-139 West (Pu...	2.0
Pulaski Skyway (...	4.8
I 78 West (Local)	27.2
Total: 58.9 mi, 1:27 hr	

6. To see driving directions, press **View** and select **Itinerary**.

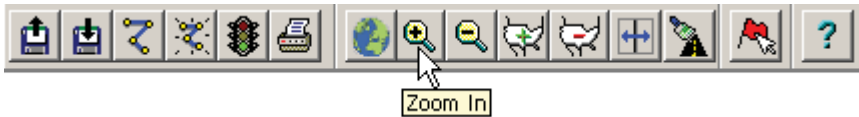


# Trip Planning On Your Desktop

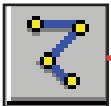
You can use CoPilot's desktop functions to map out routes and print maps and driving directions before getting on the road. Desktop trip planning is an additional feature of CoPilot that is in no way connected to using your Smartphone for route guidance.

On the following pages you will find brief descriptions of CoPilot's desktop trip planning capabilities. For more detailed descriptions, open CoPilot Help from the desktop application (**Help** menu > **Help Contents and Search**, or click the **Help** button on the toolbar). Go to **Desktop Trip Planning** in the **Contents** tab.

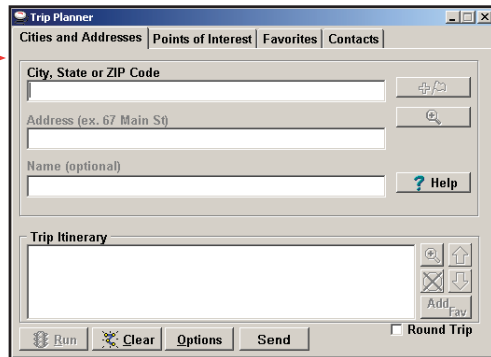
To begin planning a trip on your desktop, click the **Planning** icon in the sidebar to the left of the map. Using the drop-down menus you can select from a number of planning features. Many of these features can also be accessed from the toolbar. Place your cursor on any toolbar button without clicking to see what it does.



## New Trip



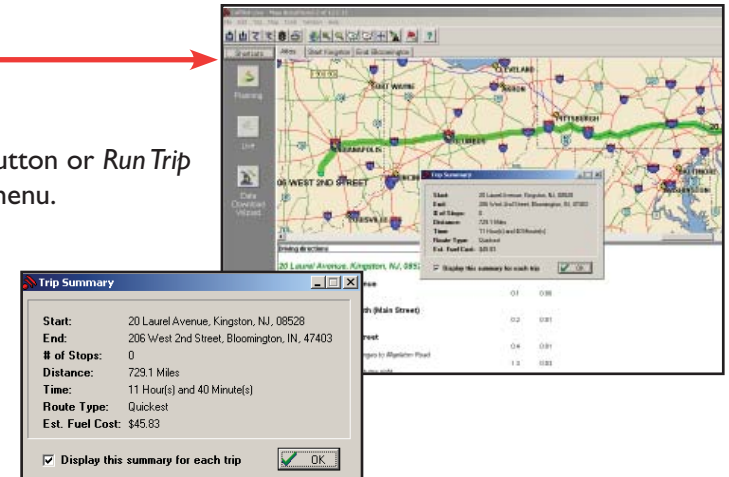
**New Trip** button or *New Trip* in the File menu.



## Run Trip



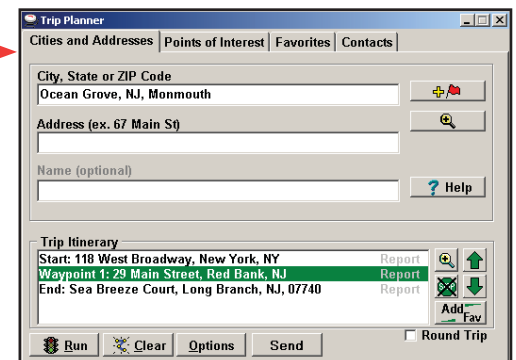
**Run Trip** button or *Run Trip* in the Trip menu.



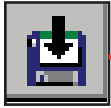
## Edit Trip



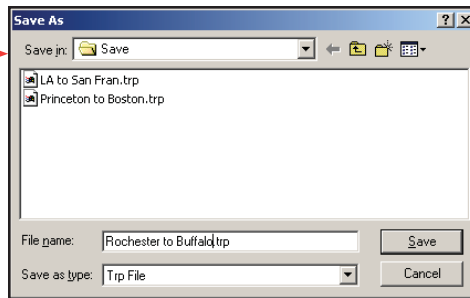
**Edit Trip** button or *Edit Trip* in the Trip menu.



## Save Trip



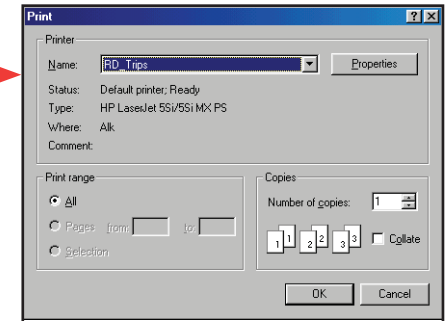
Save Trip button or *Save Trip / Save Trip As...* in the File menu.



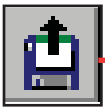
## Print



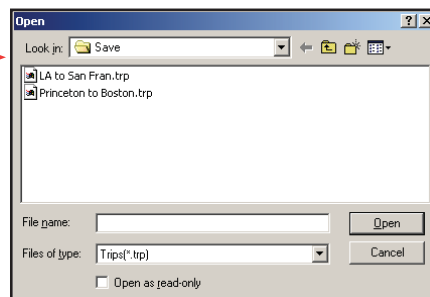
Print button or *Print...* in the File menu.



## Open Trip



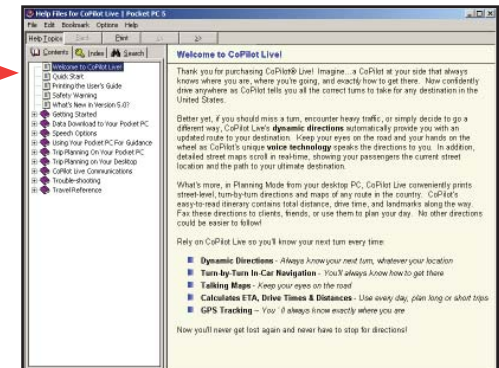
Open Trip button or *Open Trip* in the File menu.



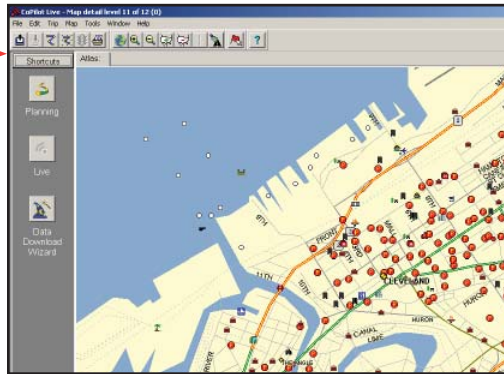
## Help



Help button or *Help Contents and Search* in the Help menu.



## Zoom In



**Zoom In** button or *Zoom In* in the Map menu.

Each time you click this button, your view will be zoomed in by one increment. The zoom level is shown in the title bar of the map window.

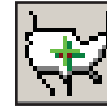
## Zoom Out



**Zoom Out** button or *Zoom Out* in the Map menu.

Each time you click this button, your view will be zoomed out by one increment. The zoom level is shown in the title bar of the map window.

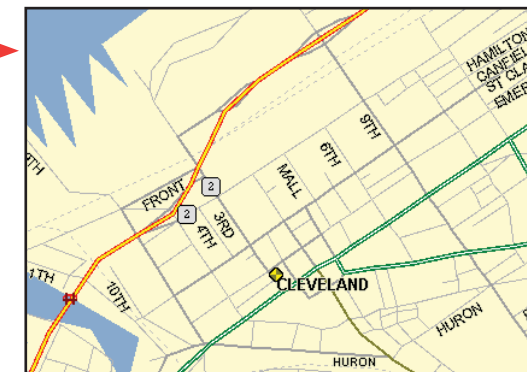
## More Detail



**More Detail** button or *Detail > Show More* in the Map menu.

Click to increase the level of detail you see on the map by one increment without changing the zoom level.

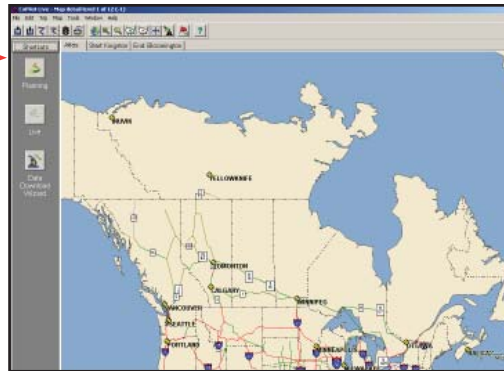
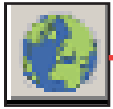
## Less Detail



**Less Detail** button or *Detail > Show Less* in the Map menu.

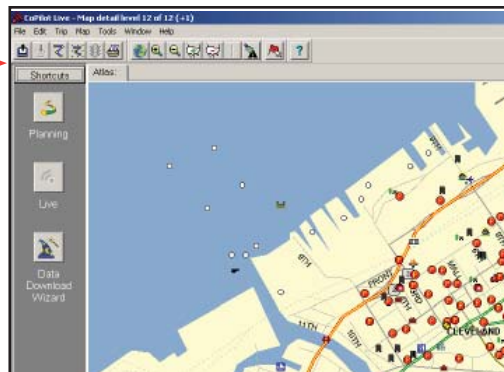
Click to decrease the level of detail you see on the map by one increment without changing the zoom level.

## Zoom To Region



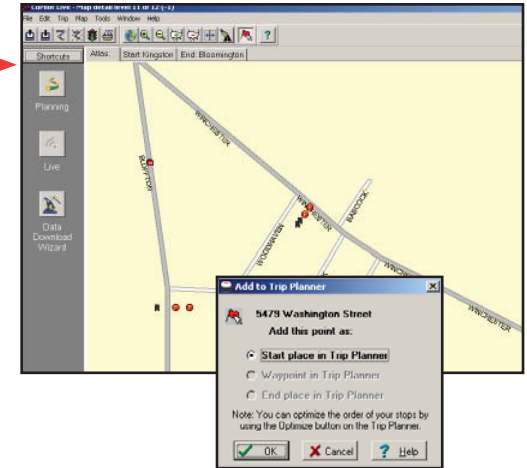
**Zoom to Region** button or *Zoom Region* in the Map menu. This function allows you to zoom your map view to a specific area. Choices in the sub-menu will depend on which CoPilot data region(s) were purchased.

## Refresh Map



**Refresh Map** button or *Refresh Map* in the Map menu. When scrolling through a map you may notice it takes a few seconds for all the data to catch up. This function will snap the entire screen to a new map.

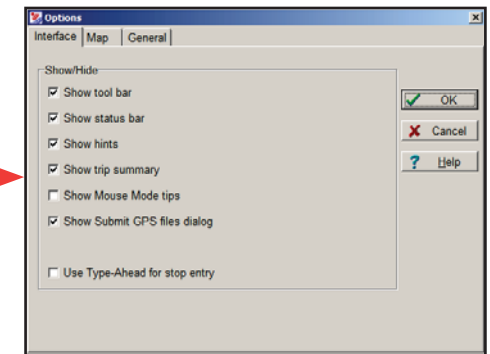
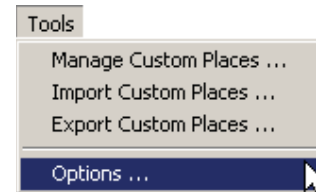
## Pick Stops



To turn on *Pick Stop* mode, click the **Pick Stops** button or right-click on the map and select *Pick Stops*. Then click on any point to enter it as a stop. Your map view must be zoomed in to level 11 or 12 (level is displayed in the CoPilot window title bar).

In the dialog that opens, you can choose to enter the point as a start place, a waypoint, or a destination.

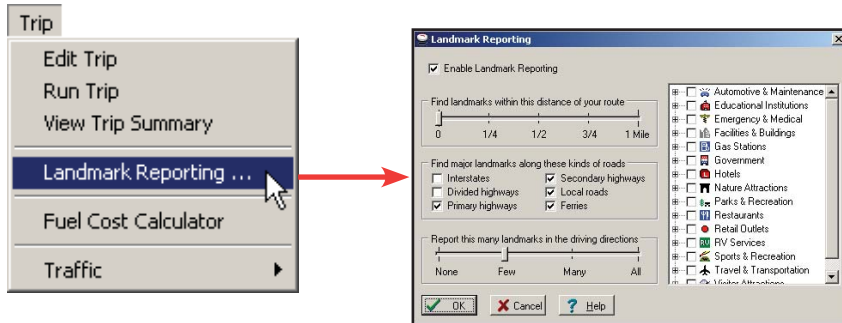
## Options (Tools Menu)



Select *Options* from the drop-down Tools menu.

In this window you can change the way you view your desktop maps and various application settings. For example, in the **General** tab you can choose the measure of distance (miles vs. kilometers), and the **Map** tab lets you adjust the appearance of features on the map such as roads and points of interest.

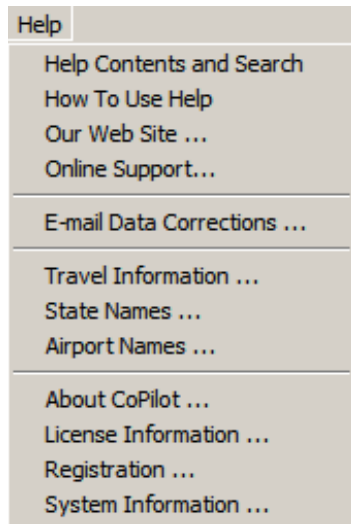
## Landmark Reporting



Select *Landmark Reporting* from the drop-down Trip menu.

In this window you can control how many landmarks CoPilot points out when generating driving directions.

## Help Menu

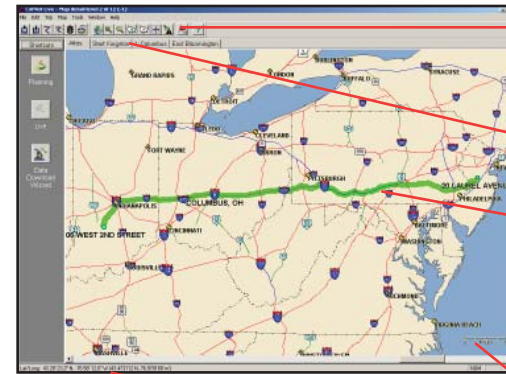


Use the drop-down **Help** menu to access CoPilot Help for assistance with all aspects of the software and to quickly access ALK's web site.

## Reference: CoPilot On Your Desktop

The following is a guide to the main screens you will see as you use CoPilot on your desktop/laptop computer for trip planning.

### Map Window



Menus and toolbar buttons to access all of CoPilot's desktop features.

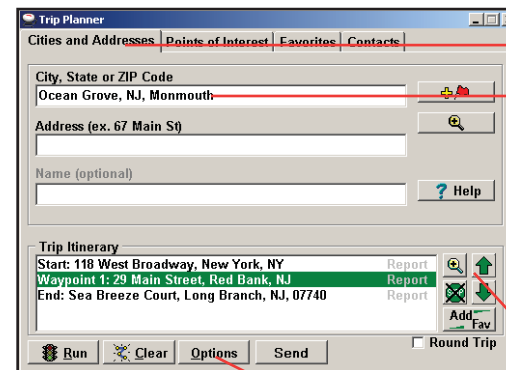
Click on a tab to frame any stop on your route.

Your planned route with stops. **Zoom to a stop and move your cursor over any street to see its name.**

Distance Scale.

Latitude/longitude position of your cursor on the map.

### Trip Planner Window (Cities & Addresses)



Click **Cities and Addresses**.

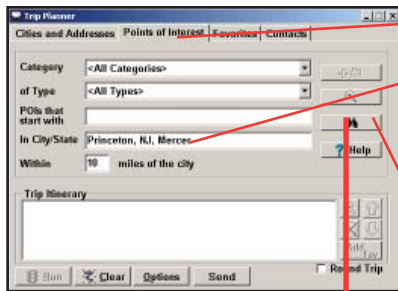
**Enter city name/state, or ZIP code.** Enter an address (optional), with the option to add a **Name** to it. Click the **Add Stop** button to add the stop to the Itinerary.



Move stops up or down on your Itinerary, zoom to stop location on the map, delete a stop, or add a favorite.

See p. 37 for routing options.

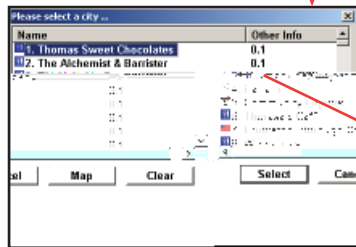
## Trip Planner Window (Points of Interest)



Click the **Points of Interest** tab.

**Enter a state or ZIP code** in which you would like to search, a radius within which to search, and (optionally) choose a **category** and **type** from the drop-down menu.

Click the **binoculars** to start the search.

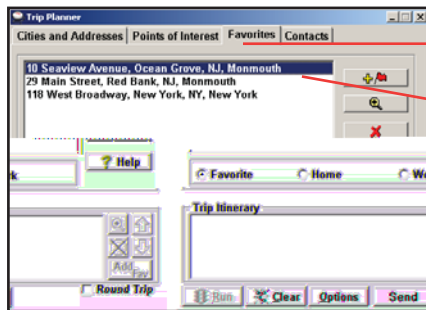


You can also enter a name to narrow down the search in the **POIs that start with** box.

You will be given a list of matches to your search criteria. Highlight your selection and click Select. Click the **Add Stop** button to add it to your Itinerary.



## Trip Planner Window (Favorites)



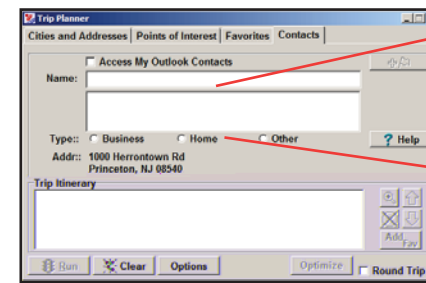
Select the **Favorites** tab.

**Highlight a selection** from your list of places by clicking on it. You can zoom to it on the map, or delete it from the list using the buttons to the right. Click the **Add Stop** button to add a favorite to your Itinerary.



See p. 37 for routing options.

## Trip Planner Window (Contacts)



Enter a contact's first or last name and press <Enter>. CoPilot will search your Contacts database for matches.

Select the Contacts address type (as defined in Outlook) to get the appropriate address, then click the **Add Stop** button to add it to your Itinerary.

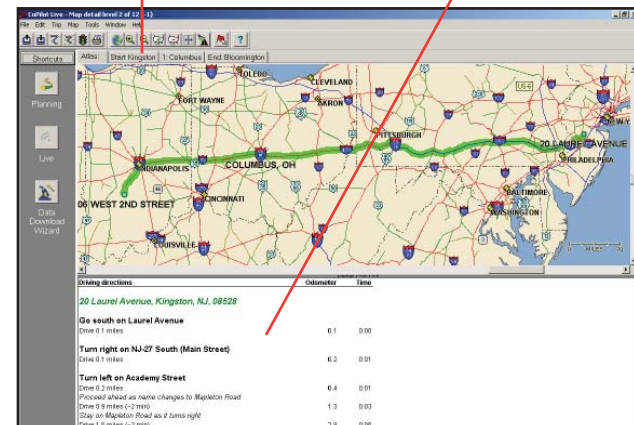


## Driving Directions and Map (Split Screen)

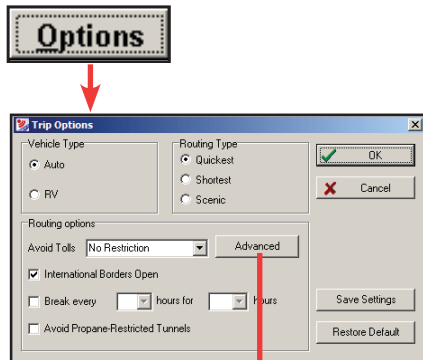
When you click **Run** in the Trip Planner window, your route will be calculated and driving directions and a map will display. To print either one, click on it and choose **Print** from the **File** menu. To print directions plus all map views, choose **TravPak Printing**.

**Atlas, Start, and End** tabs will zoom to the map view of those places respectively.

Driving directions give you turn-by-turn instructions including ramps and exits, and distance and time between turns.



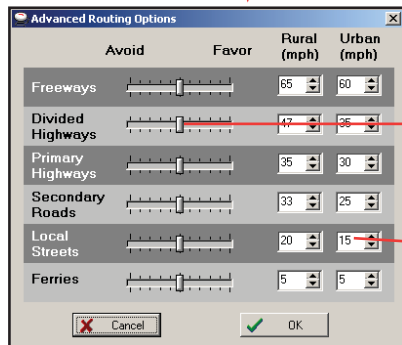
## Routing Options



Click the **Options** button in the Trip Planner window to access CoPilot routing options.

**Auto** and **Quickest** are the default settings, providing the quickest routing for automobiles based on practical considerations such as road quality, terrain, and urban/rural classifications. **RV** routing favors major roads and avoids sharp turns, U-turns, and urbanized areas where possible. *In the U.S. only*, RV routing avoids 12' 6" height restrictions on highways. **Scenic** routing avoids major roads and favors more rural and scenic roads wherever possible and practical.

Check **Avoid Propane Restricted Tunnels** if desired.

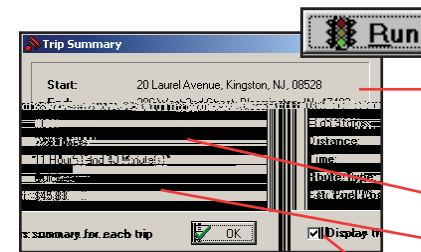


Click **Advanced** to set general road preferences.

Drag the sliding bars to the left or right to avoid or favor each road type.

Set the road speeds CoPilot uses in its route calculations for each type of road by either typing or clicking the up and down arrows under **Rural** and **Urban** for each road type.

## Trip Summary



Select **Run** in the Trip Planner window to run the trip.

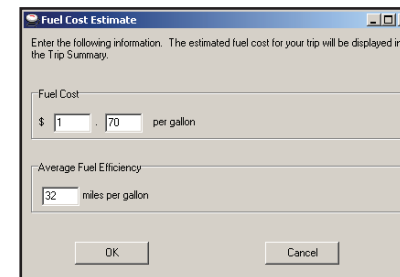
The Trip Summary will show start and end places, and the number of stops in between them.

Total distance and time for trip.

Estimated fuel cost for your trip based on entries in the Fuel Cost Calculator (Trip menu).

Click **OK** to view map and driving directions.

## Fuel Cost Calculator



To calculate an estimate of your fuel costs for a trip, select **Fuel Cost Calculator** from the Trip menu before you run your route.

Fill in the average cost per gallon of fuel that you expect to pay, and the distance per gallon you can expect to get in your vehicle. Click **OK**, then run your trip. A fuel cost estimate based on what you entered will be calculated and shown in the Trip Summary that CoPilot creates for every trip you run.

## CoPilot Live Communications

CoPilot Live allows you to maintain two-way communication with drivers who are using CoPilot and to actually see where they are currently located. You can do this from the CoPilot Live web page.

Using this CoPilot Live functionality requires the following:

- 1) **If you want to track and message other drivers from a desktop or laptop computer:** Your PC must be connected to the internet so that you can access our CoPilot Live web page through a normal web browser.
- 2) **If you want others to track and send messages to you:** CoPilot Live must be running on your Smartphone in your vehicle. You must have a wireless Internet connection.

## About the CoPilot Live Web Page

As a CoPilot user, you can create an account on our website that allows your family, friends, and coworkers to “see” you and communicate with you anywhere in the world!

Through the website you can do all of the following:

- Send text messages to CoPilot users on the road, using large, customizable, one-touch response buttons to ensure driver safety.
- Real-time tracking of other people who are on the road. See their current location, destination, ETA and much more on a map.
- Send trip itinerary updates including new stops and revised destinations — you can coordinate a change in plans with someone who’s on the road right now.
- Create an online account from where you can send temporary or permanent tracking numbers to friends and family, giving you tighter control of the security so you know who has access to you while you’re on the road. You can also create and join groups with other CoPilot users, and manage all your account preferences.

To learn more about CoPilot’s Live capabilities, visit ALK’s CoPilot Live web page at <http://live.alk.com> (North America) or <http://live.alk.eu.com> (Europe). Click the **Help** button at the top of the home page.

## Set Up a CoPilot Live Web Account

To use Live capabilities, your Smartphone must have a wireless Internet connection. **To create your account** on the CoPilot Live website:

1. Go to the web site for your region:
  - North America: <http://live.alk.com>
  - Europe: <http://live.alk.eu.com>
2. Choose a Username and Password that you will use to login to the CoPilot Live network.
3. Fill in the rest of the required information.
4. Click “**Submit**” to create your account.

## Set Up Your Smartphone

Take advantage of your Smartphone’s wireless Internet (GPRS) connection for real-time traffic alerts, tracking, messaging, and itinerary updates.

First, create your Username and Password on the CoPilot Live website as described above. Then, on your Smartphone, open CoPilot and select **Menu > Options > Live**. Live options are:

- **Login:** Check **Enable Live Communications** and enter the Username and Password you created on the CoPilot Live website. The **Screen Name** is how others will identify you.  
**NOTE:** Your screen name, user name, and/or password can be changed as many times as you like. But you’ll need to change your user name or password on the Live Web page before changing them on your Smartphone. This is *not* required for your screen name.
- **Settings:** Choose the message timeout and how frequently you want to broadcast your position. Less frequent broadcasts will reduce the data traffic on your Internet plan.
- **Invitations:** Invitations can be sent to e-mail recipients for real-time location tracking.
- **Messages:** **View** or **Delete** messages received.
- **Traffic Settings:** Where available. Select your traffic data source; if using a TMC traffic receiver, set tuner and frequency options. See *Real-Time Traffic Information*, p. 39-40.



Your Live connection status is shown at the bottom right of the black information bar:

- **Green** — Good.
- **Yellow** — OK. Usually seen when first connecting or in poor GPRS coverage.
- **Red** — No connection. Check your GPRS network coverage and Live settings.

## Real-Time Traffic Information

In addition to providing users with pre-trip planning and GPS route guidance capabilities, CoPilot uses wireless communications to automatically send real-time information to drivers, notifying them of traffic incidents along the route ahead and potential alternate routes. As soon as the user selects a destination, CoPilot will provide dynamic driving directions and regularly updated traffic incident reports.

There are two ways to receive real-time traffic feeds with CoPilot Live:

1. Use a wireless Internet (GPRS) connection to receive traffic incidents through a traffic service provider.
2. Use a TMC-enabled traffic receiver to obtain traffic incidents through a dedicated FM band.

Traffic is an optional additional-cost service and is not available in all areas.

## Real-Time Traffic in Guidance Mode

Provided that CoPilot has GPS acquisition, a user-inputted destination, and a traffic feed (GPRS or TMC), it will provide regularly updated traffic incident reports in Guidance Mode. As soon as the user selects a destination, CoPilot begins providing dynamic driving directions as well as regularly updated traffic incident reports and alternate routes based on the user's destination and route ahead.

## Traffic Options

To configure traffic options, on your Smartphone select **Menu > Options > Live > Traffic**.

- **Enable Traffic:** Switch on the Traffic service.
- **Automatically Check Traffic:** Select to have CoPilot automatically check for traffic incidents when you first run a route and periodically after that as you drive into new areas.
- **Default Action:** Choose either **Ignore** or **Avoid**. If a new traffic alert times out before you look at it, that incident will take the default action. The Avoid setting will generate an alternate route.

## Using Traffic

In Guidance Mode, press **Menu > Traffic**. Options in this menu are:

- **Check Route:** Select **Check Route** to manually check for traffic incidents along your current route.
- **Find Traffic:** Select **Find Traffic** to search for traffic incidents around any location.
- **Review Traffic:** To view or change your traffic routing, press **Menu > Traffic > Review Traffic**.
- **Clear Traffic:** To set all incidents to Ignore, press **Menu > Traffic > Clear Traffic**.

**Avoiding a Traffic Incident:** When CoPilot sends a traffic incident alert, pressing **9** will open a list of current traffic incidents. You can choose to **Avoid** or **Ignore** each incident — highlight it and press **Menu > Avoid** or **Menu > Ignore**. CoPilot will automatically route around any incident you choose to avoid.

## Traffic Icon Display

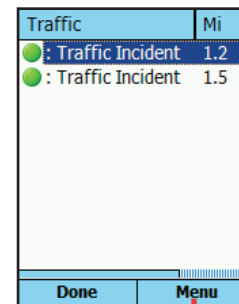
CoPilot obtains traffic content from a traffic server or TMC station and displays the information in its maps and itinerary. Incidents are displayed on the map using the following indicators:

-  **General Incident**
-  **Accident**
-  **Road Construction**
-  **Weather**
-  **Traffic Jam**

## Responding to Incident Alerts

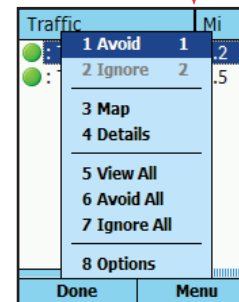


CoPilot Live alerts you when a traffic incident is detected on your route ahead. Press **9** to see a list of all current incidents.



In the Traffic screen, highlight an incident and press **Menu** for response options.

If you choose to **Avoid** the incident, a new route will be calculated to avoid congestion. If you **Ignore** the incident, your route will continue unchanged. If an alert times out before you respond to it, CoPilot will use your default incident action for any unviewed incidents (see *Traffic Options* p. 39).



Select **Map** to see the location of the congestion on the map, and **Details** to see more information about the incident.

## Creating/Using Your Own Voice

You can create your own voice or load voices that other CoPilot users have created and posted online. To do this, create a folder with any name you want and copy sound files with the exact names of the CoPilot sound files.

The CoPilot sound file names and their associate dialogues are:

File Name	Dialogue
100y.wav	One Hundred Yards Ahead
150y.wav	One Hundred Fifty Yards Ahead
1kmWarning	1 Kilometer Ahead
1miWarning	1 Mile Ahead
200mWarning	200 Meters Ahead
200y.wav	Two Hundred Yards Ahead
250y.wav	Two Hundred Fifty Yards Ahead
2kmWarning	2 Kilometers Ahead
2miWarning	2 Miles Ahead
300y.wav	Three Hundred Yards Ahead
350y.wav	Three Hundred Fifty Yards Ahead
3tenthmiWarning	3/10ths of a Mile Ahead
400y.wav	Four Hundred Yards Ahead
450y.wav	Four Hundred Fifty Yards Ahead
500mWarning	500 Meters Ahead
500y.wav	Five Hundred Yards Ahead
50y.wav	Fifty Yards Ahead
Arrived	Approaching Stop
BearLeft	Bear Left
BearRight	Bear Right
CancelDetour	Cancelling Detour
CPWelcome	Welcome to CoPilot
Detour	Finding Detour
Fspcam.wav	Attention Fixed Automatic Safety Camera
Junction.wav	Take Motorway Junction
JustAhead	Just Ahead
Kepleft.wav	Keep Left
Keepright.wav	Keep Right
Keeps.wav	Keep Straight Ahead
LeftTurn	Turn Left

NextStop	Continuing to Next Stop
PoiAhead	Point of Interest Ahead
Rdestination.wav	You Have Reached Your Destination
RightTurn	Turn Right
Roundabout1	Take 1st Exit at Roundabout
Roundabout10	Take 10th Exit at Roundabout
Roundabout2	Take 2nd Exit at Roundabout
Roundabout3	Take 3rd Exit at Roundabout
Roundabout4	Take 4th Exit at Roundabout
Roundabout5	Take 5th Exit at Roundabout
Roundabout5	Take 6th Exit at Roundabout
Roundabout7	Take 7th Exit at Roundabout
Roundabout8	Take 8th Exit at Roundabout
Roundabout9	Take 9th Exit at Roundabout
SafetyCam	Safety Camera Ahead
SharpLeft	Make a Sharp Left
SharpRight	Make a Sharp Right
Spcam.wav	Speed Camera Ahead
TakeExit	Take Exit
Then	Then
TrafficWarning	Traffic Incident Reported
TurnAround	Turn Around
Waypoint	Approaching Stop

**NOTE:** The sound files must be saved in OGG or WAV format.

### EXAMPLE:

- Create a folder—the name of the folder can be anything you want (for this example we'll use 'Fun Voice' as the folder name).
- Record sound files to replace some or all of the CoPilot sound files (CoPilot will use the default voice for sound files it does not find).
- Copy the folder with the new sound files to Storage Card\CoPilot\Save\[Choose a language folder].
- Now when you select that language, you'll see 'Fun Voice' as one of the voice options (see page 5 for details on changing your voice).

## CoPilot Technical Support

After registering your software (see p.43), you're entitled to technical support and discounts on new versions of CoPilot. Check out ALK's web site for technical support documentation and posted answers to common questions. If the web site does not provide an answer to your question, technical support for registered users is available during standard business hours (9:00 am - 5:00 pm Monday-Friday). You should be at your computer and have your **Installation Product Key** available when you contact us (this Product Key can be found on the back cover of the printed *Quick Start Guide* that came with the product).

Please be sure to reach us using the contact information for your region shown below. We are sorry, but our support staff in ALK's regional offices cannot respond to requests for assistance outside the areas they serve.

**North America** - Web: [www.alk.com](http://www.alk.com), E-mail: [cpsupport@alk.com](mailto:cpsupport@alk.com),  
Fax: 609-252-8166, Phone: 888-872-8768

**Europe** - Web: [www.alk.eu.com](http://www.alk.eu.com), E-mail: [uksupport@alk.eu.com](mailto:uksupport@alk.eu.com),  
Postal: Suite 8, 4 Bloomsbury Square, London WC1A 2RP, UK  
Phone: +44 (0)207 404 4222

**Australia** - Web: [www.travroute.com.au/support/](http://www.travroute.com.au/support/)  
E-mail: [support@travroute.com.au](mailto:support@travroute.com.au), Phone: 03-9855-1498

## License Upgrade

The CoPilot desktop software you purchased contains street-level maps for all of the United States. Licenses are also available for the following European and North American regions:

- (1) **Major region** - Detailed street-level maps for any of the following regions: Alps Ski Region, Benelux (Belgium, the Netherlands, and Luxembourg), Canada, France, Germany, Italy, Pyrenees, Scandinavia, and the United Kingdom.
- (2) **Pan-Europe** - Complete street-level maps for all of Europe
- (3) **United States** - Complete street-level maps for the entire U.S.

If you purchased CoPilot with a single (U.S.) region license and later want to use street maps from other regions, you will need to purchase an upgrade license from your dealer. After purchasing a CoPilot region, you will need to go through the activation process.

## Adding a Data Region

If you have purchased an additional data region after your initial purchase of CoPilot, you will need to modify the original ("Base") installation and activate the new region.

**IMPORTANT:** You can only use your Expansion Product Key AFTER you have installed and activated CoPilot with a Product Key for the Base product. If you have not yet installed CoPilot, please do so first and then follow the instructions below.

### ON YOUR DESKTOP/LAPTOP:

1. Insert your CoPilot **Install Disc** into your CD-ROM drive.
2. Select **Modify** and click **Next** when the InstallShield Wizard appears.
3. Enter your Expansion Product Key when prompted to enter a **Product Key**.
4. Follow the on-screen instructions for installing to your desktop and Smartphone.

5. The Activation Wizard will appear at the end of installation.  
Activation occurs just as it did when you originally installed CoPilot (see p. 4-5).

### **ON YOUR SMARTPHONE:**

**IMPORTANT:** You must install and activate CoPilot to your Smartphone using your Base Product Key AND you must have data downloaded to your Smartphone before using your Expansion Product Key.

1. Open CoPilot on your Smartphone.
2. Press the **Menu** soft key, then select **Options > More... > Upgrade License**.
3. Enter your Expansion Product Key (found in your order confirmation e-mail) when prompted to enter a **Product Key**.
4. Follow the on-screen instructions.
5. Activation occurs just as it did when you originally installed CoPilot (see p. 4-5).

If you have any questions about this process, please visit our Support Center at [www.alk.com](http://www.alk.com) or send an e-mail to [support@alk.com](mailto:support@alk.com).

### **Region Selection**

If you purchased an additional data region, when downloading map data to your Smartphone from your desktop PC or laptop you will need to make sure the proper region is active. To do this, on your desktop in Planning mode click the **Map** menu > **Region** > and check the desired region. Then restart CoPilot.

## **Using Help Files**

CoPilot provides extensive Help Files, available on your desktop/laptop and your Smartphone, to guide you through the program as you use it.

To access Help on your Smartphone, once the CoPilot application is launched, press **Menu > Help**.

In the desktop application, click on the Help button in any window to open a Help topic that describes how to use that window, or use the **Help** menu and select **Help Contents and Search**.

## **Software Registration**

Registered users are entitled to technical support, discounts on new versions of CoPilot, new product information, and software enhancements.

**NOTE:** Software activation does NOT register your software, they are two separate processes.

**In North America:** Go to [www.alk.com](http://www.alk.com) and click "Support"

**In Europe:** Go to [www.alk.eu.com](http://www.alk.eu.com) and click "Support"

**In Australia:** Go to [www.alk.com/au/registration.asp](http://www.alk.com/au/registration.asp).

ALK Technologies has a one-per-licensing non-transferable registration. Unauthorized purchases from private owners are not supported or under warranty, and special pricing does not apply.

# CoPilot End-User License Agreement

**NOTE:** On the following pages there are three separate license agreements for users of **North American, European, and Australian Data.**

THIS IS A LEGAL AGREEMENT BETWEEN YOU, THE USER (either an individual or an entity), AND ALK TECHNOLOGIES, INC. ("ALK"). IF YOU DO NOT AGREE TO THE TERMS OF THIS License, DO NOT OPEN THE PACKAGE. Promptly return the unopened CD-ROM package and accompanying materials (including written materials and containers) to the dealer from which you obtained them for a full refund.

OPENING THE PACKAGE OR USING THE ENCLOSED SOFTWARE INDICATES YOUR ACCEPTANCE OF THE TERMS OF THIS License.

---

## ALK® Technologies, Inc. LICENSE AGREEMENT

### CoPilot Live | Smartphone 6 with NORTH AMERICAN DATA

#### LICENSES: 1 User

##### I. Grant of License:

This ALK License Agreement ("License") is a single-user, non-exclusive, non-transferable license agreement and not an agreement for sale. ALK hereby licenses the Help Files and CD-ROM software identified above (collectively, "the Software") to you under the following terms and conditions.

The Software may not be loaded onto a network of any type. You may use the Software on any compatible personal computer, provided you use it on only one computer at a time. The Software is "in use" on a computer when it is loaded into the temporary memory (i.e., RAM) or installed into the permanent memory (e.g., hard disk, CD-ROM, or other storage device) of that computer. You may make a single back-up or archival copy of the Software for back-up purposes only. You may not transfer this Software or assign this License Agreement to another party.

You are not permitted to, during the term of this License Agreement and thereafter:

- Use the Software on a network or file server.
- Use or copy the Software or the accompanying documentation except as provided in this License Agreement.
- Alter, merge, modify, or adapt the Software or the accompanying documentation in any way including disassembling or decompiling this Software.
- Loan, lease, sell, transfer, or sublicense the Software or the accompanying documentation.
- Copy, loan, lease, sell, transfer, or sublicense any output of this Software (including but not limited to printed maps and driving itineraries); However, you may provide a limited number of printed copies of a single trip to family members or traveling companions.
- You are not permitted to use the Software for motor-carrier tariff or routing purposes.

- Electronic reproduction and transmission of output to remote locations is not permitted.

ALK retains all rights not expressly granted. Nothing in this License Agreement constitutes a waiver of ALK's rights under the U.S. copyright laws or other applicable copyright laws or any other federal or state law.

##### 2. Term:

This License is effective upon receipt by you of the Software and upon opening the package. The License is effective until terminated. You may terminate this License at any time by returning all copies of the Software, and any portions thereof, to ALK. The License terminates automatically if you fail to comply with any of the terms of this License Agreement. You agree upon such termination to return or destroy this CD-ROM and all other copies of the Software and certify in writing to ALK that you have done so.

##### 3. Limited Warranty:

ALK warrants that all disc(s) on which the Software is furnished shall, for a period of 90 days from delivery (the "Warranty Period") be free, in normal use, from defects in material and workmanship. ALK will have no responsibility to replace any disc(s) that have been damaged by accident, abuse, or misapplication.

Customer Remedies: ALK's entire liability and your exclusive remedy shall be, at ALK's option, either (a) return of the price paid or (b) replacement of the disc(s) that does not meet ALK's Limited Warranty, and that is returned to ALK with a copy of your receipt.

Except as specifically provided above, ALK MAKES NO OTHER WARRANTY OR REPRESENTATION, EITHER EXPRESS OR IMPLIED, WITH RESPECT TO THE SOFTWARE OR DOCUMENTATION, INCLUDING ANY WARRANTY AS TO THE QUALITY, PERFORMANCE, MERCHANTABILITY, OR FITNESS FOR A PARTICULAR PURPOSE. IN NO EVENT WILL ALK TECHNOLOGIES, INC. BE LIABLE FOR DIRECT DAMAGES IN EXCESS OF THE License FEE OR ANY INDIRECT, SPECIAL, INCIDENTAL, OR CONSEQUENTIAL DAMAGES ARISING OUT OF THE USE OR INABILITY TO USE THE SOFTWARE OR DOCUMENTATION, EVEN IF ADVISED OF THE POSSIBILITY OF SUCH DAMAGES. IN NO CASE SHALL ALK'S LIABILITY EXCEED THE AMOUNT OF THE License FEE.

While the information contained in the Software was believed to have been correct at the time of publication, ALK cannot guarantee its accuracy and shall not be subject to liability for any errors or omissions. Information in the Software and its accompanying preprinted materials is subject to change without notice and does not represent a commitment or endorsement on the part of ALK. Routes and miles generated by the Software are not suitable for commercial truck use.

THE WARRANTY AND REMEDIES SET FORTH ABOVE ARE EXCLUSIVE AND IN LIEU OF ALL OTHERS, ORAL OR WRITTEN, EXPRESS OR IMPLIED. No ALK dealer, distributor, agent, or employee is authorized to make any modification or addition to this warranty. Some states do not allow the exclusion or limitation of implied warranties or limitation of liability for incidental or consequential damages, so the above limitation or exclusion may not apply to you.

#### 4. Licensee's Responsibility:

You assume all responsibility for, and ALK shall not be liable for, all action taken, decisions made, and advice given as a result of your use of the Software.

#### 5. US Government Restricted Rights:

The Software and documentation are provided with restricted and limited rights. Use, duplication, or disclosure by the Government is subject to restrictions set forth in subparagraphs (c) (1) and (2) of the Commercial Computer Software-Restricted Rights clause at 48 CFR 52.227-19, as applicable. Manufacturer is ALK Technologies, Inc., 1000 Herrontown Road, Princeton, NJ 08540.

#### 6. General:

The export or re-export of the Software may be restricted by the laws of the United States and other countries, and you shall not export this Software in violation of any such applicable laws. This License Agreement is governed by the laws of the State of New Jersey.

© Copyright 1990-2006 ALK Technologies, Inc.

-----  
**Exit Authority (c) 1999-2006 Zenrin USA, Inc. All rights reserved.**  
-----

#### **Disclosure for products containing Canadian Postal Code and/or Canadian Street-Level Data:**

Based on Computer File(s) licensed from Statistics Canada. © Copyright, HER MAJESTY THE QUEEN IN RIGHT OF CANADA, as represented by the Minister of Industry, Statistics Canada 2006. ALK Technologies, Inc. is an Authorized User of selected Statistics Canada Computer File(s) and Distributor of derived Information Products under Licensing Agreement 6147. No confidential information about an individual, family, household, organisation or business has been obtained from Statistics Canada.

#### **Software License Agreement for FONIX TEXT TO SPEECH ENGINE**

IMPORTANT! READ THIS License AGREEMENT BEFORE OPENING THIS SOFTWARE PACKET. BY OPENING THE SEALED PACKET OR USING THE SOFTWARE, YOU INDICATE YOUR ACCEPTANCE OF THE ENTIRE AGREEMENT.

#### SOFTWARE License AGREEMENT

This Agreement is a legal agreement between you and Fonix Corporation ("Fonix"), but may be superseded by a separate license agreement that you and Fonix have signed. The software in this packet ("Software") and its media and documentation (collectively, the "Product") are protected by copyright and other intellectual property laws and international treaties. You have no title to, or ownership of, the Product, other than its

physical media. Fonix reserves all rights not specifically granted in this Agreement.

**USE AND RESTRICTIONS:** You may operate the Software on only one computer. However, if you have purchased a network or multiple-user license, you may load and use as many single-use copies and/or support as many concurrent users, in the aggregate, as are authorized by such license. You may make only one copy of the Software, retaining the Fonix CD or other media for storage and back-up purposes. The Software does not include updates, maintenance, or support, which may be separately available. This Software and its voice output are for your personal, individual use only. You are not permitted to broadcast or distribute the voice output of the Software (i.e., synthesized speech) to more than one person or to use the Software's voice output for any commercial purposes. You may not modify, adapt, translate, rent, lease, loan, resell for profit, distribute, network, or create derivative works based on any part of the Software. You may not reverse engineer, decompile, or disassemble the Software.

**LIMITED WARRANTY:** Fonix warrants that the Product's physical media will be, under normal use, free from defects in material and workmanship for one year from the date you purchased it. Fonix's entire liability, and your exclusive remedy under this warranty, will be replacement of the defective media without charge. EXCEPT FOR THIS LIMITED WARRANTY, FONIX MAKES NO WARRANTIES, EXPRESS OR IMPLIED, AND DISCLAIMS ANY IMPLIED WARRANTY OR MERCHANTABILITY OR FITNESS FOR A PARTICULAR PURPOSE. Fonix does not warrant that the product is entirely error-free. FONIX'S TOTAL LIABILITY FOR ANY CLAIM OR DAMAGE ARISING OUT OF THE USE OF OR INABILITY TO USE THE SOFTWARE SHALL BE LIMITED TO DIRECT DAMAGES, WHICH SHALL NOT EXCEED THE License FEE YOU PAID. IN NO EVENT SHALL FONIX BE LIABLE FOR LOST PROFITS, LOST DATA, INTERRUPTIONS OF BUSINESS, OR ANY INCIDENTAL OR CONSEQUENTIAL DAMAGES ARISING OUT OF THE USE OF OR INABILITY TO USE THE SOFTWARE, REGARDLESS OF WHETHER FONIX HAS NOTICE OF THE POTENTIAL FOR SUCH LOSS OR DAMAGE.

The above limitations may be superseded by law in some jurisdictions.

**U.S. GOVERNMENT RESTRICTED RIGHTS:** The Software and any accompanying materials are provided with Restricted Rights. Use, duplications, or disclosure by the Government is subject to restrictions as set forth in subparagraph (c)(1)(ii) of The Rights in Technical Data and Computer Software clause at DFARS 252.227-7013 or subparagraphs (c)(1) and (2) of the Commercial Computer Software-Restricted Rights at 48 CFR 52.227-19, as applicable. Contractor/manufacturer is Fonix Corporation at 1225 Eagle Gate Tower, 60 East South Temple St., Salt Lake City, Utah 84111.

---

## ALK® Technologies, Inc. License AGREEMENT

### CoPilot Live | Smartphone 6 with EUROPEAN DATA

#### LICENSES: 1 User

**IMPORTANT:** Please read the following agreement ("License") carefully.

THIS IS A LEGAL AGREEMENT BETWEEN YOU, THE USER (either an individual or an entity), AND ALK Technologies, Inc. ("ALK"). IF YOU DO NOT AGREE TO THE TERMS OF THIS License, DO NOT INSTALL THE SOFTWARE. Promptly return the package and accompanying materials (including written materials and containers) to the dealer from which you obtained them for a full refund.

**Acceptance:** Installation or use of the enclosed ALK Technologies, Inc. ("ALK") software (the "Software") on your computer constitutes your acceptance of these terms. If you do not agree to the terms of this License, you must immediately delete the Software from your computer and destroy any copies you made of the Software and of any written materials relating to the software, and promptly return the Software and, if bought as part of a package, any associated devices to your retailer for a refund.

**License:** ALK grants you, as an individual, a License to install and use one copy of the Software on a single personal computer at a time. Your License to use the Software is subject to you complying with the terms of this License. A License is required for each installation of the Software, unless the Software is (i) installed temporarily on a computer during the repair or maintenance of the computer on which the Software is normally installed and (ii) is immediately deleted from such computer as soon as those repairs or maintenance are complete. You may make one copy of the Software for backup purposes only.

**Copyright:** United States copyright law and international treaty provisions protect the Software. You agree that no title to the intellectual property in the Software is transferred to you. You further acknowledge that title and ownership rights will remain the exclusive property of ALK, and you will not acquire any rights to the Software except as expressly set out in this License. You agree that any copies of the Software will contain the same proprietary notices that appear on and in the Software.

**Prohibited Use:** Unless you have ALK's prior written permission, you may not (i) use, copy, modify, alter, or transfer the Software or accompanying documentation, except as expressly permitted in this License; (ii) translate, disassemble, decompile, or reverse engineer the Software (iii) sublicense or lease the Software or its documentation; or (iv) use the Software in a multi-user or networked environment or on a rental basis or in a time-sharing or computer service business.

**Limited Warranty:** ALK warrants that the Software will perform substantially in accordance with the accompanying written materials for a period of 30 days from the date of purchase. Any implied warranties relating to the Software are limited to such 30 day period provided that limitation is permitted by applicable law.

**End-User Remedies:** If the Software does not conform to the "Limited Warranty" above, ALK's entire liability and your sole and exclusive remedy will be, at ALK's option, either to (i) correct the error; or (ii) help you work around the error; or (iii) accept a return and issue a refund through your retailer. The Limited Warranty is void if failure

of the Software has resulted from your fault, abuse, or misapplication. If we correct an error in the Software for you, then the unexpired portion of the Limited Warranty period as at the date you informed us of the error will apply to the corrected software once you have received the corrected version.

**NO OTHER WARRANTIES:** EXCEPT AS SET OUT IN THE LIMITED WARRANTY, ALK DOES NOT WARRANT THAT THE SOFTWARE IS ERROR FREE. ALK DISCLAIMS ALL OTHER WARRANTIES WITH RESPECT TO THE SOFTWARE, WHETHER EXPRESS OR IMPLIED, INCLUDING BUT NOT LIMITED TO IMPLIED WARRANTIES OF MERCHANTABILITY, FITNESS FOR A PARTICULAR PURPOSE AND NON-INFRINGEMENT OF THIRD PARTY RIGHTS. Some jurisdictions do not allow the exclusion of implied warranties or limits on how long an implied warranty may last, or an exclusion of incidental damages. This means the above limitations or exclusions may not apply to you. This warranty gives you specific legal rights and you may also have other rights depending on your country.

**No Liability for indirect loss:** In no event will ALK be liable to you for any loss of profit, wasted time, lost business or for any incidental, or indirect loss of any kind arising out of the performance or use of the Software, even if ALK has been advised of the possibility of such damages.

**Termination:** Without prejudice to its other rights, ALK may terminate this License if you fail to comply with these terms and conditions. In that situation, you must destroy all copies of the Software.

**Choice of Law:** This License is governed by the laws of England.

---

#### End User License Agreement for NAVTEQ European Data

##### For Portable Navigation Device Applications

**The data ("Data") is provided for your personal, internal use only and not for resale. It is protected by copyright, and is subject to the following terms and conditions which are agreed to by you, on the one hand, and ALK Technologies Inc. ("ALK") and its licensors (including their licensors and suppliers) on the other hand.**

© 2006 NAVTEQ. All rights reserved.

#### TERMS AND CONDITIONS

**Personal Use Only.** You agree to use this Data together with COPILOT® LIVE for the solely personal, non-commercial purposes for which you were licensed, and not for service bureau, time-sharing or other similar purposes. Accordingly, but subject to the restrictions set forth in the following paragraphs, you may copy this Data only as necessary for your personal use to (i) view it, and (ii) save it, provided that you do not remove any copyright notices that appear and do not modify the Data in any way. You agree not to otherwise reproduce, copy, modify, decompile, disassemble or reverse engineer any portion of this Data, and may not transfer or distribute it in any form, for any purpose, except to the extent permitted by mandatory laws.



**Restrictions.** Except where you have been specifically licensed to do so by ALK, and without limiting the preceding paragraph, you may not (a) use this Data with any products, systems, or applications installed or otherwise connected to or in communication with vehicles, capable of vehicle navigation, positioning, dispatch, real time route guidance, fleet management or similar applications; or (b) with or in communication with any positioning devices or any mobile or wireless-connected electronic or computer devices, including without limitation cellular phones, palmtop and handheld computers, pagers, and personal digital assistants or PDAs.

**Warning.** The Data may contain inaccurate or incomplete information due to the passage of time, changing circumstances, sources used and the nature of collecting comprehensive geographic data, any of which may lead to incorrect results.

**No Warranty.** This Data is provided to you "as is," and you agree to use it at your own risk. ALK and its licensors (and their licensors and suppliers) make no guarantees, representations or warranties of any kind, express or implied, arising by law or otherwise, including but not limited to, content, quality, accuracy, completeness, effectiveness, reliability, fitness for a particular purpose, usefulness, use or results to be obtained from this Data, or that the Data or server will be uninterrupted or error-free.

**Disclaimer of Warranty:** ALK AND ITS LICENSORS (INCLUDING THEIR LICENSORS AND SUPPLIERS) DISCLAIM ANY WARRANTIES, EXPRESS OR IMPLIED, OF QUALITY, PERFORMANCE, MERCHANTABILITY, FITNESS FOR A PARTICULAR PURPOSE OR NON-INFRINGEMENT. Some States, Territories and Countries do not allow certain warranty exclusions, so to that extent the above exclusion may not apply to you.

**Disclaimer of Liability:** ALK AND ITS LICENSORS (INCLUDING THEIR LICENSORS AND SUPPLIERS) SHALL NOT BE LIABLE TO YOU: IN RESPECT OF ANY CLAIM, DEMAND OR ACTION, IRRESPECTIVE OF THE NATURE OF THE CAUSE OF THE CLAIM, DEMAND OR ACTION ALLEGING ANY LOSS, INJURY OR DAMAGES, DIRECT OR INDIRECT, WHICH MAY RESULT FROM THE USE OR POSSESSION OF THE INFORMATION; OR FOR ANY LOSS OF PROFIT, REVENUE, CONTRACTS OR SAVINGS, OR ANY OTHER DIRECT, INDIRECT, INCIDENTAL, SPECIAL OR CONSEQUENTIAL DAMAGES ARISING OUT OF YOUR USE OF OR INABILITY TO USE THIS INFORMATION, ANY DEFECT IN THE INFORMATION, OR THE BREACH OF THESE TERMS OR CONDITIONS, WHETHER IN AN ACTION IN CONTRACT OR TORT OR BASED ON A WARRANTY, EVEN IF ALK OR ITS LICENSORS HAVE BEEN ADVISED OF THE POSSIBILITY OF SUCH DAMAGES. Some States, Territories and Countries do not allow certain liability exclusions or damages limitations, so to that extent the above may not apply to you.

**Export Control.** You agree not to export from anywhere any part of the Data provided to you or any direct product thereof except in compliance with, and with all licenses and approvals required under, applicable export laws, rules and regulations.

**Entire Agreement.** These terms and conditions constitute the entire agreement between ALK (and its licensors, including their licensors and suppliers) and you pertaining to the subject matter hereof, and supersedes in their entirety any and all written or oral agreements previously existing between us with respect to such subject matter.

**Governing Law.** The above terms and conditions shall be governed by the laws of the Netherlands, without giving effect to (i) its conflict of laws provisions, or (ii) the United Nations Convention for Contracts for the International Sale of Goods, which is explicitly excluded. You agree to submit to the jurisdiction of the Netherlands for any and all disputes, claims and actions arising from or in connection with the Data provided to you hereunder.

---

### Software License Agreement for FONIX TEXT TO SPEECH ENGINE

IMPORTANT! READ THIS License AGREEMENT BEFORE OPENING THIS SOFTWARE PACKET. BY OPENING THE SEALED PACKET OR USING THE SOFTWARE, YOU INDICATE YOUR ACCEPTANCE OF THE ENTIRE AGREEMENT.

#### SOFTWARE License AGREEMENT

This Agreement is a legal agreement between you and Fonix Corporation ("Fonix"), but may be superseded by a separate license agreement that you and Fonix have signed. The software in this packet ("Software") and its media and documentation (collectively, the "Product") are protected by copyright and other intellectual property laws and international treaties. You have no title to, or ownership of, the Product, other than its physical media. Fonix reserves all rights not specifically granted in this Agreement.

**USE AND RESTRICTIONS:** You may operate the Software on only one computer. However, if you have purchased a network or multiple-user license, you may load and use as many single-use copies and/or support as many concurrent users, in the aggregate, as are authorized by such license. You may make only one copy of the Software, retaining the Fonix CD or other media for storage and back-up purposes. The Software does not include updates, maintenance, or support, which may be separately available. This Software and its voice output are for your personal, individual use only. You are not permitted to broadcast or distribute the voice output of the Software (i.e., synthesized speech) to more than one person or to use the Software's voice output for any commercial purposes. You may not modify, adapt, translate, rent, lease, loan, resell for profit, distribute, network, or create derivative works based on any part of the Software. You may not reverse engineer, decompile, or disassemble the Software.

**LIMITED WARRANTY:** Fonix warrants that the Product's physical media will be, under normal use, free from defects in material and workmanship for one year from the date you purchased it. Fonix's entire liability, and your exclusive remedy under this warranty, will be replacement of the defective media without charge. EXCEPT FOR THIS LIMITED WARRANTY, FONIX MAKES NO WARRANTIES, EXPRESS OR IMPLIED, AND DISCLAIMS ANY IMPLIED WARRANTY OR MERCHANTABILITY OR FITNESS FOR A PARTICULAR PURPOSE. Fonix does not warrant that the product is entirely error-free. FONIX'S TOTAL LIABILITY FOR ANY CLAIM OR DAMAGE ARISING OUT OF THE USE OF OR INABILITY TO USE THE SOFTWARE SHALL BE LIMITED TO DIRECT DAMAGES, WHICH SHALL NOT EXCEED THE License FEE YOU PAID. IN NO EVENT SHALL FONIX BE LIABLE FOR LOST PROFITS, LOST DATA,

INTERRUPTIONS OF BUSINESS, OR ANY INCIDENTAL OR CONSEQUENTIAL DAMAGES ARISING OUT OF THE USE OF OR INABILITY TO USE THE SOFTWARE, REGARDLESS OF WHETHER FONIX HAS NOTICE OF THE POTENTIAL FOR SUCH LOSS OR DAMAGE.

The above limitations may be superseded by law in some jurisdictions.

**U.S. GOVERNMENT RESTRICTED RIGHTS:**The Software and any accompanying materials are provided with Restricted Rights. Use, duplications, or disclosure by the Government is subject to restrictions as set forth in subparagraph (c)(1)(ii) of The Rights in Technical Data and Computer Software clause at DFARS 252.227-7013 or subparagraphs (c)(1) and (2) of the Commercial Computer Software-Restricted Rights at 48 CFR 52.227-19, as applicable. Contractor/manufacturer is Fonix Corporation at 1225 Eagle Gate Tower, 60 East South Temple St., Salt Lake City, Utah 84111.

**GENERAL:** If any term of this Agreement is found void or unenforceable, all other terms shall remain in full force and effect. This Agreement shall be governed by the internal laws of Utah. If you breach any term of this Agreement, Fonix may terminate this license and you must return all copies of the Product to Fonix.

---

## **ALK Technologies, Inc. License AGREEMENT**

### **CoPilot Live | Smartphone 6 with AUSTRALIAN DATA**

#### **LICENSES: 1 User**

THIS IS A LEGAL AGREEMENT BETWEEN YOU, THE USER (either an individual or an entity), AND ALK Technologies, Inc. ("ALK"). IF YOU DO NOT AGREE TO THE TERMS OF THIS License, DO NOT INSTALL THE SOFTWARE. Promptly return the package and accompanying materials (including written materials and containers) to the dealer from which you obtained them for a full refund.

INSTALLING THIS SOFTWARE INDICATES YOUR ACCEPTANCE OF THE TERMS OF THIS License.

#### **I. Grant of License:**

This ALK License Agreement ("License") is a single-user, non-exclusive, non-transferable license agreement and not an agreement for sale. ALK hereby licenses the on-line User Guide and CD-ROM software identified above (collectively, "the Software") to you under the following terms and conditions.

The Software may not be loaded onto a network of any type. You may use the Software on any compatible personal computer, provided you use it on only one computer at a time. The Software is "in use" on a computer when it is loaded into the temporary memory (i.e., RAM) or installed into the permanent memory (e.g., hard disk, CD-ROM, or other storage device) of that computer. If the Software is permanently installed on the hard disk or other storage device of a computer (other than a network server) and one person uses that computer more than 80 percent of the time it is in use, then that person may also use the Software on a portable or home computer. You

may make a single back-up or archival copy of the Software for back-up purposes only. You may not transfer this Software or assign this License Agreement to another party.

You are NOT permitted, during the term of this License Agreement and thereafter to:

- Use the Software on a network or file server.
- Use or copy the Software or the accompanying documentation except as provided in this License Agreement.
- Alter, merge, modify, or adapt the Software or the accompanying documentation in any way including disassembling or decompiling this Software.
- Loan, lease, sell, transfer, or sublicense the Software or the accompanying documentation.
- Copy, loan, lease, sell, transfer, or sublicense any output of this Software (including but not limited to printed maps and driving itineraries); However, you may provide a limited number of printed copies (up to 10) of a single trip to family members or traveling companions.
- You are not permitted to use the Software for motor-carrier tariff or routing purposes.
- Electronic reproduction and transmission of output to remote locations are not permitted.

ALK retains all rights not expressly granted. Nothing in this License Agreement constitutes a waiver of ALK's rights under the U.S. copyright laws or other applicable copyright laws or any other federal or state law.

#### **2. Term:**

This License is effective upon receipt by you of the Software and upon opening the package. The License is effective until terminated. You may terminate this License at any time by returning all copies of the Software, and any portions thereof, to ALK. The License terminates automatically if you fail to comply with any of the terms of this License Agreement. You agree upon such termination to return or destroy this CD-ROM and all other copies of the Software and certify in writing to ALK that you have done so.

#### **3. Limited Warranty:**

ALK warrants that all media on which the Software is furnished shall, for a period of 90 days from delivery (the "Warranty Period") be free, in normal use, from defects in material and workmanship. ALK will have no responsibility to replace any disc(s) that have been damaged by accident, abuse, or misapplication.

**Customer Remedies:** ALK's entire liability and your exclusive remedy shall be, at ALK's option, either (a) return of the price paid or (b) replacement of the media that does not meet ALK's Limited Warranty, and that is returned to ALK with a copy of your receipt.

Except as specifically provided above, ALK MAKES NO OTHER WARRANTY OR REPRESENTATION, EITHER EXPRESS OR IMPLIED, WITH RESPECT TO THE SOFTWARE OR DOCUMENTATION, INCLUDING ANY WARRANTY AS TO THE

QUALITY, PERFORMANCE, MERCHANTABILITY, OR FITNESS FOR A PARTICULAR PURPOSE. IN NO EVENT WILL ALK BE LIABLE FOR DIRECT DAMAGES IN EXCESS OF THE License FEE OR ANY INDIRECT, SPECIAL, INCIDENTAL, OR CONSEQUENTIAL DAMAGES ARISING OUT OF THE USE OR INABILITY TO USE THE SOFTWARE OR DOCUMENTATION, EVEN IF ADVISED OF THE POSSIBILITY OF SUCH DAMAGES. IN NO CASE SHALL ALK'S LIABILITY EXCEED THE AMOUNT OF THE License FEE.

While the information contained in the Software was believed to have been correct at the time of publication, ALK cannot guarantee its accuracy and shall not be subject to liability for any errors or omissions. Information in the Software and its accompanying preprinted materials is subject to change without notice and does not represent a commitment or endorsement on the part of ALK. Routes and miles generated by the Software are not suitable for commercial truck use.

THE WARRANTY AND REMEDIES SET FORTH ABOVE ARE EXCLUSIVE AND IN LIEU OF ALL OTHERS, ORAL OR WRITTEN, EXPRESS OR IMPLIED. No ALK dealer, distributor, agent, or employee is authorized to make any modification or addition to this warranty. Some jurisdictions do not allow the exclusion or limitation of implied warranties or limitation of liability for incidental or consequential damages, so the above limitation or exclusion may not apply to you.

#### 4. Licensee's Responsibility:

You assume all responsibility for, and ALK shall not be liable for, all action taken, decisions made, and advice given as a result of your use of the Software.

#### 5. General:

The export or re-export of the Software may be restricted by the laws of the United States and other countries, and you shall not export this Software in violation of any such applicable laws. This License Agreement is governed by the laws of the State of New Jersey.

---

### Software License Agreement for FONIX TEXT TO SPEECH ENGINE

IMPORTANT! READ THIS License AGREEMENT BEFORE OPENING THIS SOFTWARE PACKET. BY OPENING THE SEALED PACKET OR USING THE SOFTWARE, YOU INDICATE YOUR ACCEPTANCE OF THE ENTIRE AGREEMENT.

#### SOFTWARE License AGREEMENT

This Agreement is a legal agreement between you and Fonix Corporation ("Fonix"), but may be superseded by a separate license agreement that you and Fonix have signed. The software in this packet ("Software") and its media and documentation (collectively, the "Product") are protected by copyright and other intellectual property laws and international treaties. You have no title to, or ownership of, the Product, other than its physical media. Fonix reserves all rights not specifically granted in this Agreement.

**USE AND RESTRICTIONS:** You may operate the Software on only one computer. However, if you have purchased a network or multiple-user license, you may load and use as many single-use copies and/or support as many concurrent users, in the aggregate, as are authorized by such license. You may make only one copy of the Software, retaining the Fonix CD or other media for storage and back-up purposes. The Software does not include updates, maintenance, or support, which may be separately available. This Software and its voice output are for your personal, individual use only. You are not permitted to broadcast or distribute the voice output of the Software (i.e., synthesized speech) to more than one person or to use the Software's voice output for any commercial purposes. You may not modify, adapt, translate, rent, lease, loan, resell for profit, distribute, network, or create derivative works based on any part of the Software. You may not reverse engineer, decompile, or disassemble the Software.

**LIMITED WARRANTY:** Fonix warrants that the Product's physical media will be, under normal use, free from defects in material and workmanship for one year from the date you purchased it. Fonix's entire liability, and your exclusive remedy under this warranty, will be replacement of the defective media without charge. EXCEPT FOR THIS LIMITED WARRANTY, FONIX MAKES NO WARRANTIES, EXPRESS OR IMPLIED, AND DISCLAIMS ANY IMPLIED WARRANTY OR MERCHANTABILITY OR FITNESS FOR A PARTICULAR PURPOSE. Fonix does not warrant that the product is entirely error-free. FONIX'S TOTAL LIABILITY FOR ANY CLAIM OR DAMAGE ARISING OUT OF THE USE OF OR INABILITY TO USE THE SOFTWARE SHALL BE LIMITED TO DIRECT DAMAGES, WHICH SHALL NOT EXCEED THE License FEE YOU PAID. IN NO EVENT SHALL FONIX BE LIABLE FOR LOST PROFITS, LOST DATA, INTERRUPTIONS OF BUSINESS, OR ANY INCIDENTAL OR CONSEQUENTIAL DAMAGES ARISING OUT OF THE USE OF OR INABILITY TO USE THE SOFTWARE, REGARDLESS OF WHETHER FONIX HAS NOTICE OF THE POTENTIAL FOR SUCH LOSS OR DAMAGE. The above limitations may be superseded by law in some jurisdictions.

**U.S. GOVERNMENT RESTRICTED RIGHTS:** The Software and any accompanying materials are provided with Restricted Rights. Use, duplications, or disclosure by the Government is subject to restrictions as set forth in subparagraph (c)(1)(ii) of The Rights in Technical Data and Computer Software clause at DFARS 252.227-7013 or subparagraphs (c)(1) and (2) of the Commercial Computer Software-Restricted Rights at 48 CFR 52.227-19, as applicable. Contractor/manufacturer is Fonix Corporation at 1225 Eagle Gate Tower, 60 East South Temple St., Salt Lake City, Utah 84111.

**GENERAL:** If any term of this Agreement is found void or unenforceable, all other terms shall remain in full force and effect. This Agreement shall be governed by the internal laws of Utah. If you breach any term of this Agreement, Fonix may terminate this license and you must return all copies of the Product to Fonix.

---

## License Agreement for NAVTEQ AUSTRALIA DATA

### PREAMBLE

The data ("Data") is provided for your personal, internal use only and not for resale. It is protected by copyright, and is subject to the following terms and conditions which are agreed to by you, on the one hand, and ALK Technologies, Inc. ("ALK") and its licensors (including their licensors and suppliers) on the other hand.

© 2005-2006 NAVTEQ. All rights reserved.

### PERSONAL USE ONLY

You agree to use this Data together with COPILOT for the solely personal, non-commercial purposes for which you were licensed, and not for service bureau, time-sharing or other similar purposes. Accordingly, but subject to the restrictions set forth in the following paragraphs, you may copy this Data only as necessary for your personal use to (i) view it, and (ii) save it, provided that you do not remove any copyright notices that appear and do not modify the Data in any way. You agree not to otherwise reproduce, copy, modify, decompile, disassemble or reverse engineer any portion of this Data, and may not transfer or distribute it in any form, for any purpose, except to the extent permitted by mandatory laws. Multi-disc sets may only be transferred or sold as a complete set as provided by ALK and not as a subset thereof.

### RESTRICTIONS

Except where you have been specifically licensed to do so by ALK, and without limiting the preceding paragraph, you may not (a) use this Data with any products, systems, or applications installed or otherwise connected to or in communication with vehicles, capable of vehicle navigation, positioning, dispatch, real time route guidance, fleet management or similar applications; or (b) with or in communication with any positioning devices or any mobile or wireless-connected electronic or computer devices, including without limitation cellular phones, palmtop and handheld computers, pagers, and personal digital assistants or PDAs.

### WARNING

The Data may contain inaccurate or incomplete information due to the passage of time, changing circumstances, sources used and the nature of collecting comprehensive geographic data, any of which may lead to incorrect results.

### NO WARRANTY

This Data is provided to you "as is," and you agree to use it at your own risk. ALK and its licensors (and their licensors and suppliers) make no guarantees, representations or warranties of any kind, express or implied, arising by law or otherwise, including but not limited to, content, quality, accuracy, completeness, effectiveness, reliability, fitness for a particular purpose, usefulness, use or results to be obtained from this Data, or that the Data or server will be uninterrupted or error-free.

### DISCLAIMER OF WARRANTY

ALK AND ITS LICENSORS (INCLUDING THEIR LICENSORS AND SUPPLIERS) DISCLAIM ANY WARRANTIES, EXPRESS OR IMPLIED, OF QUALITY, PERFORMANCE, MERCHANTABILITY, FITNESS FOR A PARTICULAR PURPOSE OR NON-INFRINGEMENT. Some States, Territories and Countries do not allow certain warranty exclusions, so to that extent the above exclusion may not apply to you.

### DISCLAIMER OF LIABILITY

ALK AND ITS LICENSORS (INCLUDING THEIR LICENSORS AND SUPPLIERS) SHALL NOT BE LIABLE TO YOU: IN RESPECT OF ANY CLAIM, DEMAND OR ACTION, IRRESPECTIVE OF THE NATURE OF THE CAUSE OF THE CLAIM, DEMAND OR ACTION ALLEGING ANY LOSS, INJURY OR DAMAGES, DIRECT OR INDIRECT, WHICH MAY RESULT FROM THE USE OR POSSESSION OF THE INFORMATION; OR FOR ANY LOSS OF PROFIT, REVENUE, CONTRACTS OR SAVINGS, OR ANY OTHER DIRECT, INDIRECT, INCIDENTAL, SPECIAL OR CONSEQUENTIAL DAMAGES ARISING OUT OF YOUR USE OF OR INABILITY TO USE THIS INFORMATION, ANY DEFECT IN THE INFORMATION, OR THE BREACH OF THESE TERMS OR CONDITIONS, WHETHER IN AN ACTION IN CONTRACT OR TORT OR BASED ON A WARRANTY, EVEN IF ALK OR ITS LICENSORS HAVE BEEN ADVISED OF THE POSSIBILITY OF SUCH DAMAGES. Some States, Territories and Countries do not allow certain liability exclusions or damages limitations, so to that extent the above may not apply to you.

### EXPORT CONTROL

You agree not to export from anywhere any part of the Data provided to you or any direct product thereof except in compliance with, and with all licenses and approvals required under, applicable export laws, rules and regulations.

### ENTIRE AGREEMENT

These terms and conditions constitute the entire agreement between ALK (and its licensors, including their licensors and suppliers) and you pertaining to the subject matter hereof, and supersedes in their entirety any and all written or oral agreements previously existing between us with respect to such subject matter.

### GOVERNING LAW

The above terms and conditions shall be governed by the laws of the State of Illinois, without giving effect to (i) its conflict of laws provisions, or (ii) the United Nations Convention for Contracts for the International Sale of Goods, which is explicitly excluded. You agree to submit to the jurisdiction of the State of Illinois for any and all disputes, claims and actions arising from or in connection with the Data provided to you hereunder.

## Free Manuals Download Website

<http://myh66.com>

<http://usermanuals.us>

<http://www.somanuals.com>

<http://www.4manuals.cc>

<http://www.manual-lib.com>

<http://www.404manual.com>

<http://www.luxmanual.com>

<http://aubethermostatmanual.com>

Golf course search by state

<http://golfingnear.com>

Email search by domain

<http://emailbydomain.com>

Auto manuals search

<http://auto.somanuals.com>

TV manuals search

<http://tv.somanuals.com>