




12 VOLT BAR-MOUNT CHAIN SAW SHARPENER OWNER'S MANUAL



 **WARNING:** Read carefully and understand all **INSTRUCTIONS** before operating. Failure to follow the safety rules and other basic safety precautions may result in serious personal injury.

Item # 141259

Thank you very much for choosing a NORTHERN TOOL + EQUIPMENT CO., INC. Product! For future reference, please complete the owner's record below:

Model: _____ Purchase Date: _____

Save the receipt, warranty and these instructions. It is important that you read the entire manual to become familiar with this product before you begin using it.

This machine is designed for certain applications only. Northern Tool + Equipment cannot be responsible for issues arising from modification. We strongly recommend this machine is not modified and/or used for any application other than that for which it was designed. If you have any questions relative to a particular application, DO NOT use the machine until you have first contacted Northern Tool + Equipment to determine if it can or should be performed on the product.

For technical questions please call **1-800-222-5381**.

INTENDED USE

This unit allows chain sharpening without removing the chain from the bar.

TECHNICAL SPECIFICATIONS & PACKING LIST

Item	Description
Installed power	Electrical motor, max. 12V supply
Wheel thickness	1/8 in. (3.2mm) and 3/16 in. (4.7 mm)
Maximum speed	5500 RPM
Type of chains	itches 1/4in. ; .325in. ; 3/8in. ; .404in.
Weight sharpener	4.5 lbs (2 kg)

GENERAL SAFETY RULES



WARNING: Read and understand all instructions. Failure to follow all instructions listed below may result in electric shock, fire and/or serious injury.



WARNING: The warnings, cautions, and instructions discussed in this instruction manual cannot cover all possible conditions or situations that could occur. It must be understood by the operator that common sense and caution are factors which cannot be built into this product, but must be supplied by the operator.


SAVE THESE INSTRUCTIONS

WORK AREA

- **Keep work area clean**, free of clutter and well lit. Cluttered and dark work areas can cause accidents.
- **Do not use your tool where there is a risk of causing a fire or an explosion;** e.g. in the presence of flammable liquids, gasses, or dust. Power tools create sparks, which may ignite the dust or fumes.

- **Keep children and bystanders** away while operating a power tool. Distractions can cause you to lose control, so visitors should remain at a safe distance from the work area.
- **Be aware of all power lines, electrical circuits**, water pipes and other mechanical hazards in your work area, particularly those hazards below the work surface hidden from the operator's view that may be unintentionally contacted and may cause personal harm or property damage.
- **Be alert of your surroundings.** Using power tools in confined work areas may put you dangerously close to cutting tools and rotating parts.

ELECTRICAL SAFETY

-  **WARNING:** Always check to ensure the power supply corresponds to the voltage on the rating plate.
- **Do not abuse the cord.** Never carry a portable tool by its power cord, or yank tool or extension cords from the receptacle. Keep power and extension cords away from heat, oil, sharp edges or moving parts. Replace damaged cords immediately. Damaged cords may cause a fire and increase the risk of electric shock.
- **Do not expose** power tools to rain or wet conditions. Water entering a power tool will increase the risk of electric shock.
- The sharpener-motor can be used continuously for 20 minutes; then, it needs to be turned off to cool down to avoid possible damage from over-heating
- If sharpening chain on an electrical saw, always disconnect the electrical saw power cable.

PERSONAL SAFETY

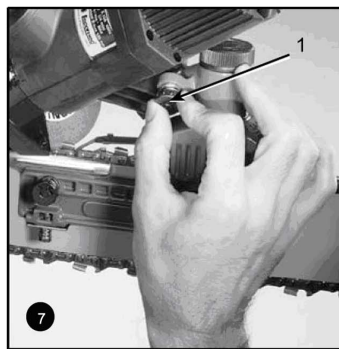
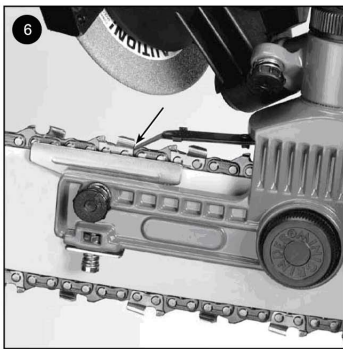
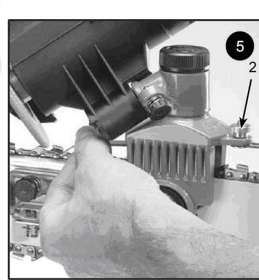
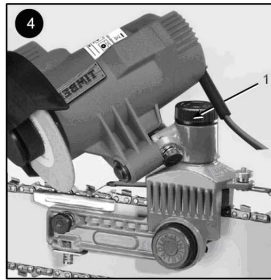
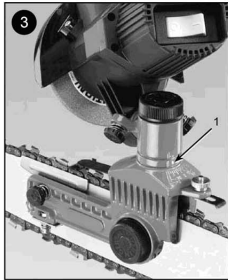
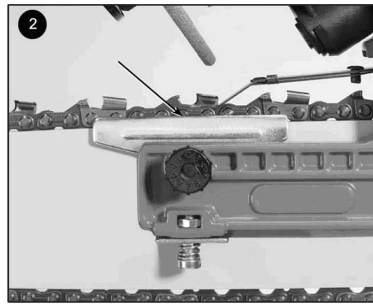
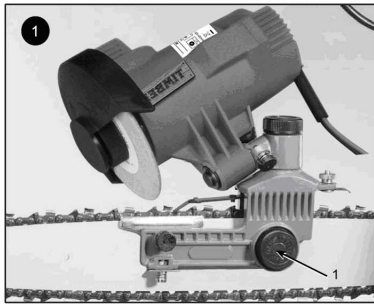
- **Stay alert**, watch what you are doing and use common sense when operating a power tool. Do not use a power tool while you are tired or under the influence of drugs, alcohol or medication. A moment of inattention while operating power tools may result in serious personal injury.
- **Dress properly.** Do not wear loose clothing, dangling objects, or jewelry. Keep your hair, clothing and gloves away from moving parts. Loose clothes, jewelry or long hair can be caught in moving parts. Air vents often cover moving parts and should be avoided.
- **Use safety apparel and equipment.** Use safety goggles or safety glasses with side shields which comply with current national standards, or when needed, a face shield. Use a dust mask in dusty work conditions. This applies to all persons in the work area. Also use non-skid safety shoes, hardhat, gloves, dust collection systems, and hearing protection when appropriate.
- **Avoid accidental starting.** Do not carry the power tool with your finger on the switch. Ensure the switch is in the off position before plugging tool into power outlet. In the event of a power failure, while a tool is being used, turn the switch off to prevent surprise starting when power is restored.
- **Do not overreach.** Keep proper footing and balance at all times.
- **Remove adjusting keys or wrenches** before connecting to the power supply or turning on the tool. A wrench or key that is left attached to a rotating part of the tool may result in personal injury.
- Never wear rings, bracelets and/or loose clothing that could come into contact with the grinding wheel.
- Always wear gloves and approved protective eyewear while operating or maintaining the sharpener.
- Before starting up the sharpener, check that the working area is free of tools or other objects.
- Keep all other people or by-standers away from work area during its operation.
- Always work in a stable and safe position.

- Only allow users familiar with the sharpener's operation to use the sharpener.
- Store the sharpener in a safe, dry place when not in use. Keep away from children.

TOOL USE AND CARE

- **Do not force the tool.** Tools do a better and safer job when used in the manner for which they are designed. Plan your work, and use the correct tool for the job.
- **Never use a tool** with a malfunctioning switch. Any power tool that cannot be controlled with the switch is dangerous and must be repaired by an authorized service representative before using.
- **Disconnect power** from tool and place the switch in the locked or off position before servicing, adjusting, installing accessories or attachments, or storing. Such preventive safety measures reduce the risk of starting the power tool accidentally.
- **Secure work** with clamps or a vise instead of your hand to hold work when practical. This safety precaution allows for proper tool operation using both hands.
- **Use only accessories that are recommended** by the manufacturer for your model. Accessories that may be suitable for one tool may create a risk of injury when used on another tool.
- **Keep guards in place** and in working order.
- **Never leave tool** running unattended.
- Never stop the grinding wheel with your hands, even after stopping the motor.
- Check that all power is disconnected when changing grinding wheels, during maintenance, or transporting.
- Never start the sharpener without the wheel guard in place. The guard is supplied with the accessories bag and must be installed before operation. The guard can be removed only for wheel replacement; then, it must be reinstalled.
- Check that the voltage and frequency indicated on the sharpener correspond to supplied power.
- Never use higher rated power supply, as this will damage the sharpener.
- Never use defective and/or non-standard cables, plugs or extension cables.
- Remove power or cables immediately if cables show signs of damaged or are cut.
- The power supply cables are complete with terminals. Never use cables that are manipulated in any way.
- Check the cable position during operation, making sure that cables stay away from grinding wheels during operation. Never work near other electrical cables.
- Never advance the chain with-your-hands until the grinding wheel has moved entirely back to the upright position (non-cutting position).
- Before starting the grinder, always check that the grinding wheel is correctly installed and not damaged.
- Before using the sharpener, check any safety, or other devices, are properly working.
- Never use the sharpener as a cutter or for grinding objects other than saw chains
- Never use near or expose sharpener to any explosive or flammable liquids or environment.
- Never start the sharpener with hands or fingers touching or near wheel
- Never force the sharpener or any tool while working, maintaining or sharpening.

ASSEMBLY



OPERATION

FIRST: Check that you have proper size grinding wheel to match your chain.

Check your chain saw specifications for proper wheel size.

Be sure the wheel is securely installed and always check wheel for any damage before each use.

NEVER use without wheel guard installed.

NEXT: Install the sharpener onto chain saw chain bar, approximately centered.

- Notes: This machine is equipped with a safety switch with a release coil.

The provided power cables are complete with terminals for quick and safe connection to any 12V battery.

This allows the operator to use this sharpener on-the-job or in-the-field, wherever a 12V battery is available.

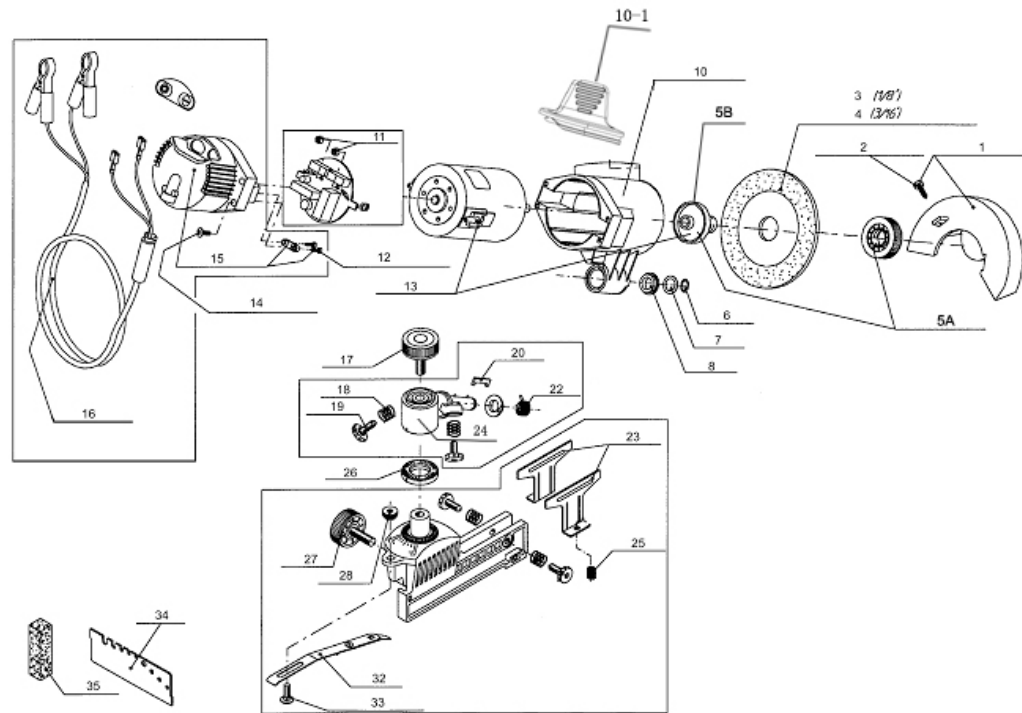
MAINTENANCE



WARNING: Make sure this tool is disconnected from its power source before attempting any maintenance, cleaning, or inspection.

- **Maintain your tools.** It is recommended that the general condition of any tool be examined before it is used. Keep your tools in good repair by adopting a program of conscientious repair and maintenance in accordance with the recommended procedures found in this manual. If any abnormal vibrations or noise occurs, turn the tool off immediately and have the problem corrected before further use. Have necessary repairs made by qualified service personnel.
- **Keep cutting tools sharp and clean.** Properly maintained cutting tools with sharp cutting edges are less likely to bind and are easier to control. Keep handles dry, clean, and free from oil and grease.
- **Cleaning.** Use only soap and a damp cloth to clean your tools. Many household cleaners are harmful to plastics and other insulation. Never let liquid get inside a tool.
- Always disconnect from power source before carrying out any maintenance, lubrication or cleaning operations
- Keep sharpener clean using a cloth rag with soap and water. Always dry after cleaning
- Never use compressed air for cleaning, it can cause wood or metal dust to reach small areas in the sharpener causing damage to essential components of the sharpener.

· DIAGRAM & PARTS LIST



Parts #	Description	Qty	Parts #	Description	Qty
1	Grinding wheel cover	1	16	Cable Set	1
2	Self-tapping screw	1	17	lock nut	1
3	Grinding wheel	1	18	Reset spring	4
4	Grinding wheel	1	19	Adjustment bolt	4
5A	Grinding wheel cover board	1	20	Torsion limit board	1
5B	Grinding wheel seat	1	22	Torsion	1
6	Axis Card	1	23	Elastic clip chain plate	2
7	Antifriction pad	1	24	Rotating Seat	1
8	Torsion Cover	2	25	bearing spring	2
10	Body	1	26	Angle plate	1
10-1	Handle	1	27	lock nut	1
11	PCB board	1	28	M5 nut	1
12	Pressure Line board	1	32	Limited board Set	1
13	Electrical Set	1	33	bolt M5X10	1
14	Self-tapping screw	4	34	Gauge	1
	Switch Cover	1	35	Shaping of sand	1

For replacement parts and technical questions, please call **1-800-222-5381**.

WARRANTY

One-year Limited Warranty



WARNING

Some dust created by power sanding, sawing, grinding, drilling, and other construction activities contains chemicals known to the State of California to cause cancer, birth defects or other reproductive harm.

Some examples of these chemicals are:

- lead from lead-based paints,
- crystalline silica from bricks and cement and other masonry products, and
- arsenic and chromium from chemically-treated lumber.

Your risk from these exposures varies, depending on how often you do this type of work. To reduce your exposure to these chemicals: work in a well ventilated area, and work with approved safety equipment, such as those dust masks that are specially designed to filter out microscopic particles.



Northern Tool + Equipment Co.,
2800 Southcross Drive West
P.O. Box 1499 Burnsville, MN 55337-0499
Made in China

Free Manuals Download Website

<http://myh66.com>

<http://usermanuals.us>

<http://www.somanuals.com>

<http://www.4manuals.cc>

<http://www.manual-lib.com>

<http://www.404manual.com>

<http://www.luxmanual.com>

<http://aubethermostatmanual.com>

Golf course search by state

<http://golfingnear.com>

Email search by domain

<http://emailbydomain.com>

Auto manuals search

<http://auto.somanuals.com>

TV manuals search

<http://tv.somanuals.com>