

# 3M™ Digital Projector

## Control Application Guide Version 4.12

For Models: X21i / X26i / X30n / X31/ **X31i** / X35n / X36 / **X36i** / WX36 / **WX36i** / X46 / **X46i** / X56 / X62w / X64w / X70 / X75 / X80 / X90 / X90K / X90W / X95 / X95i

### Revision History

Revision Date	Page(s) Changed	Description of Change
4/2009	All pages	First edition, models X70, X75, X80, X90, X95, X95i
4/2010	All pages	Add models X62w, X64w, X30n, X35n
6/2010	All pages	Add models X31, X36, X46
7/2010	All pages	Add model WX36
12/2011	All pages	Add model X56
3/2012	All pages	Add model X21i, X26i
8/2012	All pages	Add model <b>X31i, X36i, X46i, WX36i</b>

### Intended Use

The 3M™ Digital Projectors are designed, built, and tested for use indoors, using 3M lamps, 3M ceiling mount hardware, and common line voltages (100V to 240V AC, 50/60 Hz). The use of other replacement lamps, outdoor operation, or different voltages has not been tested and could damage the projector, peripheral equipment and/or create a potentially unsafe operating condition.

3M Digital Projectors are designed to operate in a normal office environment.

- 100V - 240V AC, 50/60 Hz
- 16° to 29° C (60° to 85° F)
- 10-80% RH (without condensation)
- 0-1828m (0-6000 feet) above sea level

The ambient operating environment should be free of airborne smoke, grease, oil and other contaminants that can effect the operation or performance of the projector.

The 3M logo and 3M are trademarks of the 3M Company. Other trademarks used herein are the properties of their respective owners.

### Important Notice

All statements, technical information, and recommendations related to 3M's products are based on information believed to be reliable, but the accuracy or completeness is not guaranteed. Before using this product, you must evaluate it and determine if it is suitable for your intended application. You assume all risks and liability associated with such use. Any statements related to the product which are not contained in 3M's current publications, or any contrary statements contained on your purchase order shall have no force or effect unless expressly agreed upon, in writing, by an authorized officer of 3M.

### Warranty and Limited Remedy

3M warrants that when the 3M Product is used according to 3M's Intended Use Statement ([www.3m.com/meetings](http://www.3m.com/meetings)), it will perform satisfactorily for the warranted durability period as stated in the applicable 3M Product Manual in effect at the time of purchase. The warranties stated in the applicable 3M Product Manuals are exclusive and are made in place of any and all express or implied warranties or conditions, including any implied warranty of merchantability or fitness for a particular purpose, or any industry practice or custom or trade usage. Failure to follow the instructions contained in the appropriate 3M Product Manual or to use the 3M Product in accordance with 3M's Intended Use Statement will void all warranties and limited remedies.

EXCEPT AS SPECIFICALLY STATED IN THE APPLICABLE 3M PRODUCT MANUAL, 3M SHALL NOT BE LIABLE FOR ANY INDIRECT, INCIDENTAL, SPECIAL OR CONSEQUENTIAL DAMAGES (INCLUDING, BUT NOT LIMITED TO, LOSS OF PROFITS, REVENUE OR BUSINESS) RESULTING FROM, OR IN ANY WAY RELATED TO PERFORMANCE, USE OR INABILITY TO USE ANY OF THE 3M PRODUCT.

This limitation applies regardless of the legal theory upon which damages are sought. If 3M Product is defective within the applicable warranty period, your exclusive remedy shall be, at 3M's option, to replace or repair the 3M Product or to refund the purchase price of the 3M Product. All replaced parts or products become property of 3M. If the 3M Product is repaired, 3M will repair the defective part(s) with a new or used part(s). If the 3M Product is replaced, 3M will replace the product with the same or equivalent model and with a new or refurbished product. In the case of an approved warranty claim, the replacement 3M Product will carry only the remaining term of the original 3M Product's warranty period as stated in the applicable 3M Product Manual.

For warranty service, you must provide proof of the date of the original purchase, otherwise the manufacturing code date will be used to establish the start date of the warranty. 3M Product Manuals include durability statements and may include limitations specific to the product(s) being used or its intended applications, which take precedence over any statement made here. Warranty terms, limitations and exclusions may differ outside the United States of America.

### 3M Mobile Interactive Solutions Division

6801 River Place Boulevard  
Austin, Texas 78726-9000  
[www.3m.com/meetings](http://www.3m.com/meetings)

Tel: 1-800-328-1371  
© 3M 2012. All Rights Reserved.  
78-6971-1513-3 [Aug. 2012]



# Contents

1. INTRODUCTION.....	3
1.1 OUTLINE.....	3
1.2 SYSTEM.....	3
2. INSTALLATION.....	4
2.1 SYSTEM REQUIREMENTS.....	4
2.2 PROJECTOR CONTROL INSTALLATION.....	5
3. OPERATING INSTRUCTIONS.....	7
3.1 CREATE LOGIN ACCOUNTS .....	7
3.2 START APPLICATION .....	9
3.3 MAIN WINDOW.....	9
3.4 EXIT APPLICATION .....	10
3.5 APPLICATION MINIMIZATION .....	11
3.6 CONFIGURE PROJECTOR SETTINGS.....	11
3.7 BUTTONS .....	14
3.8 ADVANCED CONTROL .....	15
3.9 IMAGE SEND TO PROJECTOR .....	61
3.10 MY IMAGE (E-SHOT).....	61
3.11 SOFTWARE VERSION.....	61

- Microsoft and Windows is the registered trademark of Microsoft Corporation in the US and other countries.
- Pentium is the registered trademark of Intel Corporation in the US and other countries.
- All other trademarks are the property of their respected owners.

## Warning

- This software is free. The manufacturer has no responsibility for any errors that may occur while using this software.
- This software, or any product used with this software may not be used for any act which obstructs the Maintenance of the International Peace and Safety.

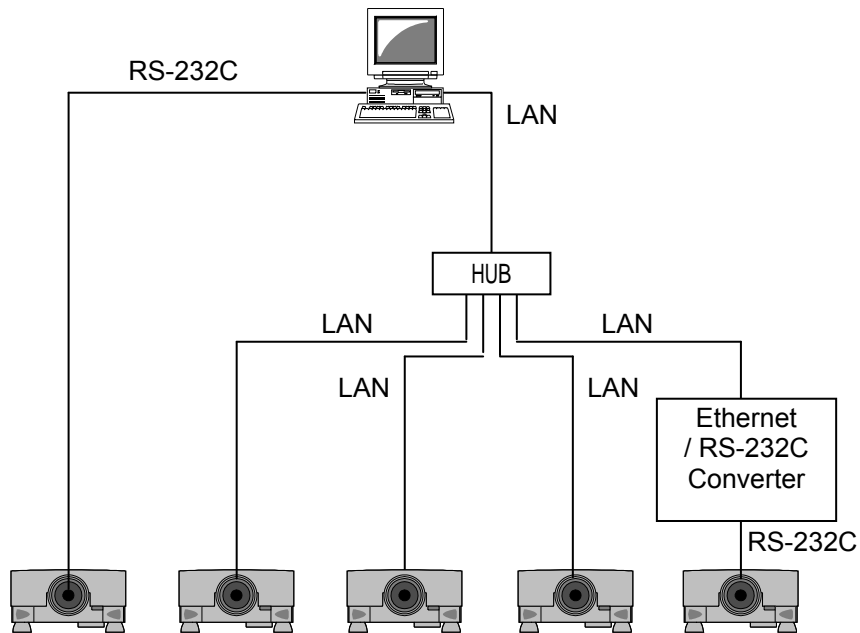
# 1. Introduction

## 1.1 Outline

The Projector Control Application, PJCtrl is software that allows you to control the projectors on the network or connected via RS232C cable. With this application, the Computer can control projectors on the network remotely.

## 1.2 System

The following diagram shows a typical network diagram for the Projector Tool.



- Use a UTP cable category 5 or higher for a Local Area Network cable.
- Use a cross type cable when using a serial cable.
- The Projector Control Application can control up to 5 of the same model projectors.

## 2. Installation

### 2.1 System Requirements

The minimum System requirements for the Projector Control Application are shown below.

(1) Operating System

Windows 2000 Professional

Windows XP Home Edition / Professional

Windows Vista Home Basic / Home Premium / Business / Ultimate / Enterprise

Windows 7 Starter / Home Basic / Home Premium / Professional / Ultimate / Enterprise

(2) CPU

Pentium3 500MHz or higher

(3) Memory

128MB or higher

(4) Hard disk space

Minimum 20MB free space for installation

(5) Serial port

This port is required to control projectors by RS-232C

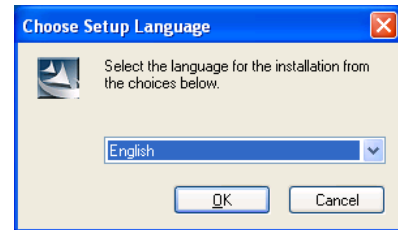
(6) LAN port

This port is required to control projectors through a network

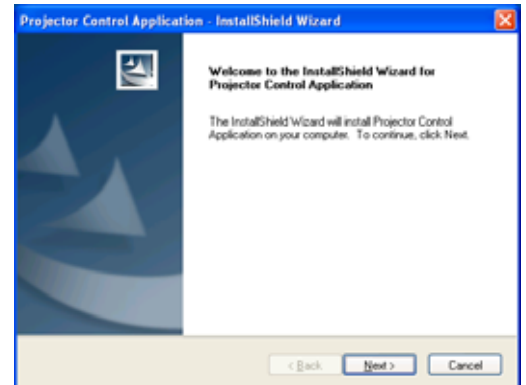
## 2.2 Projector Control Installation

Please follow next steps to install the software into your computer.

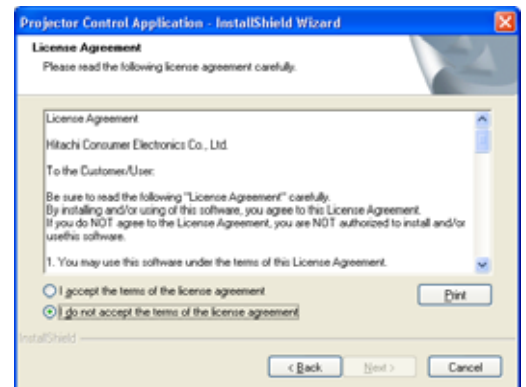
- (1) Double click the file "InstForPJCtrl.exe".
- (2) Select the language (English, Japanese or Chinese [Simplified]) during the installation process. And then click [OK].



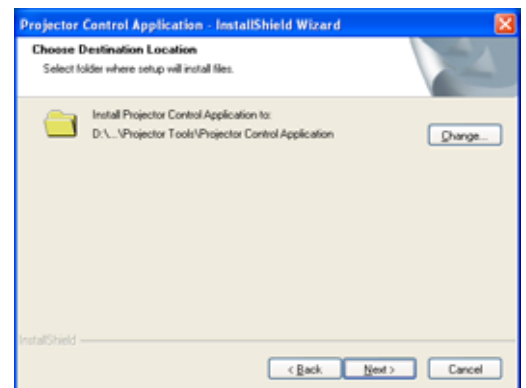
- (3) Click [Next].



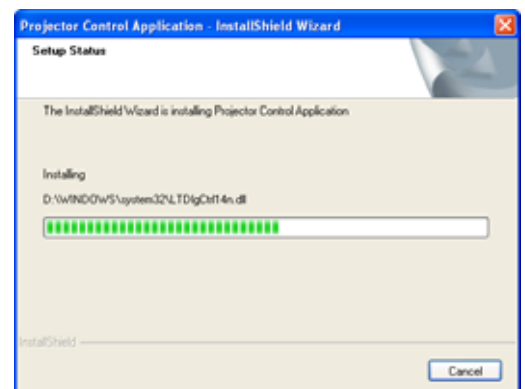
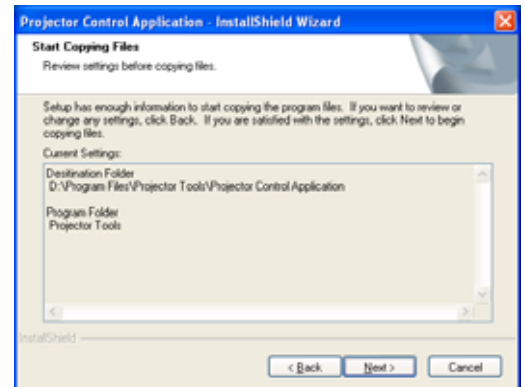
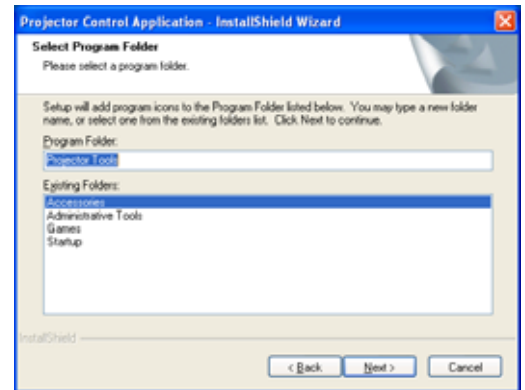
- (4) Read "License Agreement" and select "I accept the terms of the license agreement" and click [Next] if you agree the license agreement. Otherwise, click [Cancel] and stop the installation.



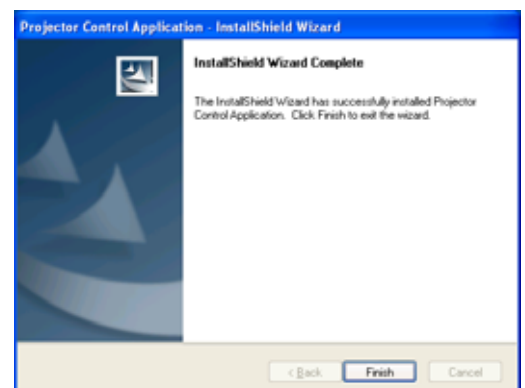
- (5) Confirm the program folder, and then click [Next].



- (6) Confirm the install folder and program folder again, and then click [Next].



- (7) Click [Finish] to complete the Projector Control Application setup wizard.



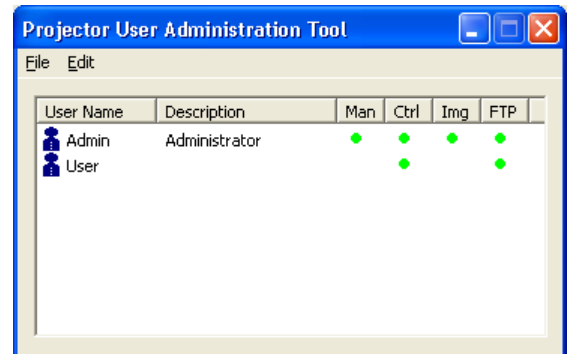
## 3. Operating Instructions

### 3.1 Create login accounts

The Projector Control Application requires a login name and password to launch the software. The Projector User Administration Tool helps you to create new user accounts.

#### 3.1.1 How to launch

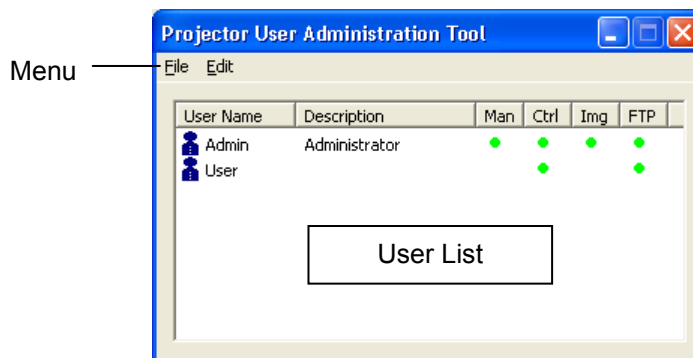
Double Click "PJUsrEdit.exe" that is located on same folder that you installed Projector Control Application. It automatically launches the Projector User Administration Tool, if no user accounts are created yet. Also Projector Control Application has a short cut [File] → [User Configuration] to launch Projector User Administration Tool.



#### 3.1.2 How to exit

Select [File] → [Exit] from the menu or click [x] bottom of the top right corner. If the changes are made, you will be required to confirm the changes.

#### 3.1.3 Main Window



##### (1) Menu

Menu	Sub Menu	Description
File	Save	Save user data
	Exit	Exit
Edit	Add New User	Create new user
	Change User	Edit user account
	Delete User	Delete user account

##### (2) User List

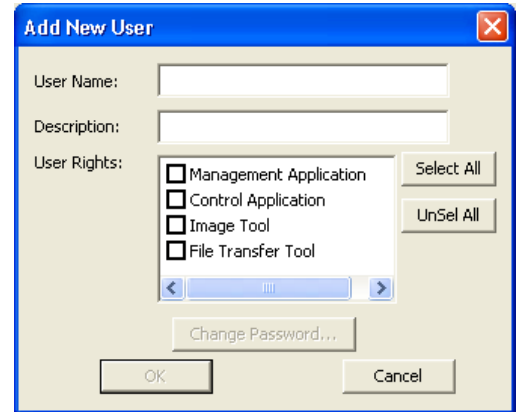
The status in the User List is described below.

Row name	Description
User Name	Username (ID)
Description	Comment
Man	“●” shows that the user can access to the PJMan (Projector Management Tool)
Ctrl	“●” shows that the user can access to the PJCtrl (Projector Control Tool)
Img	“●” shows that the user can access to the PJImg (Projector Image Tool)
FTP	“●” shows that the user can access to the PJTransfer (Projector File Transfer Tool).

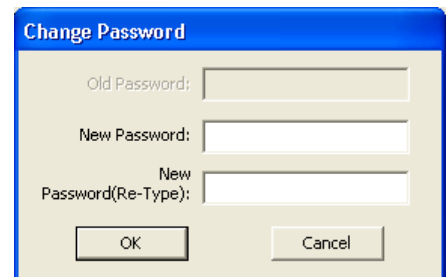
### 3.1.4 Creating new user account

Select [Edit] → [Add New User] or right clicks on the user list and select [Add New User]. The following dialog window appears.

- User Name --- Define user name, up to 20 characters
- Description --- Add comments, up to 50 characters
- User Rights --- Define accessibility. It defines the accessibility for the application software by each user account. The user can use allocation only marked application software.
- Select All --- Select all application software.
- UnSel All --- Unselect all application software.



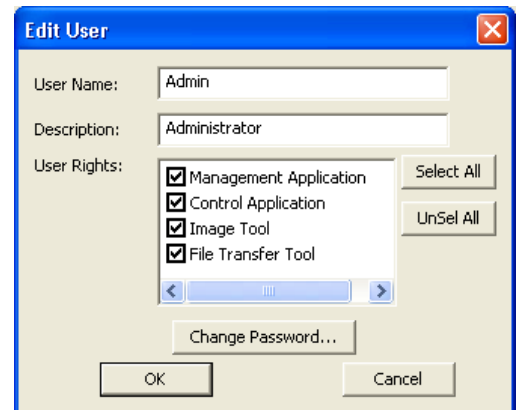
Press [OK] button after entering user name. The [Change Password] dialog appears. Enter new password and confirm entered password. The password is up to 20 characters and case sensitive.



### 3.1.5 Edit user account

Double click a username on the user list or select [Edit] → [Change User] after choosing user to open edit dialog. You can edit username, description and accessibility (user rights).

Click the button to change password. Enter old and new password, and re-enter new password to confirm.



### 3.1.6 Delete user account

Select [Edit] → [Delete User] or right click on the user list and select [Delete User]. The confirmation window will popup.

### 3.1.7 Save user account

Select [File] → [Save].

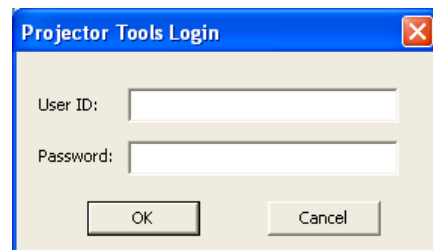
The date is stored in the file, "C:\Program Files\Common Files\Projector Tools\config\UserList".



### 3.2 Start Application

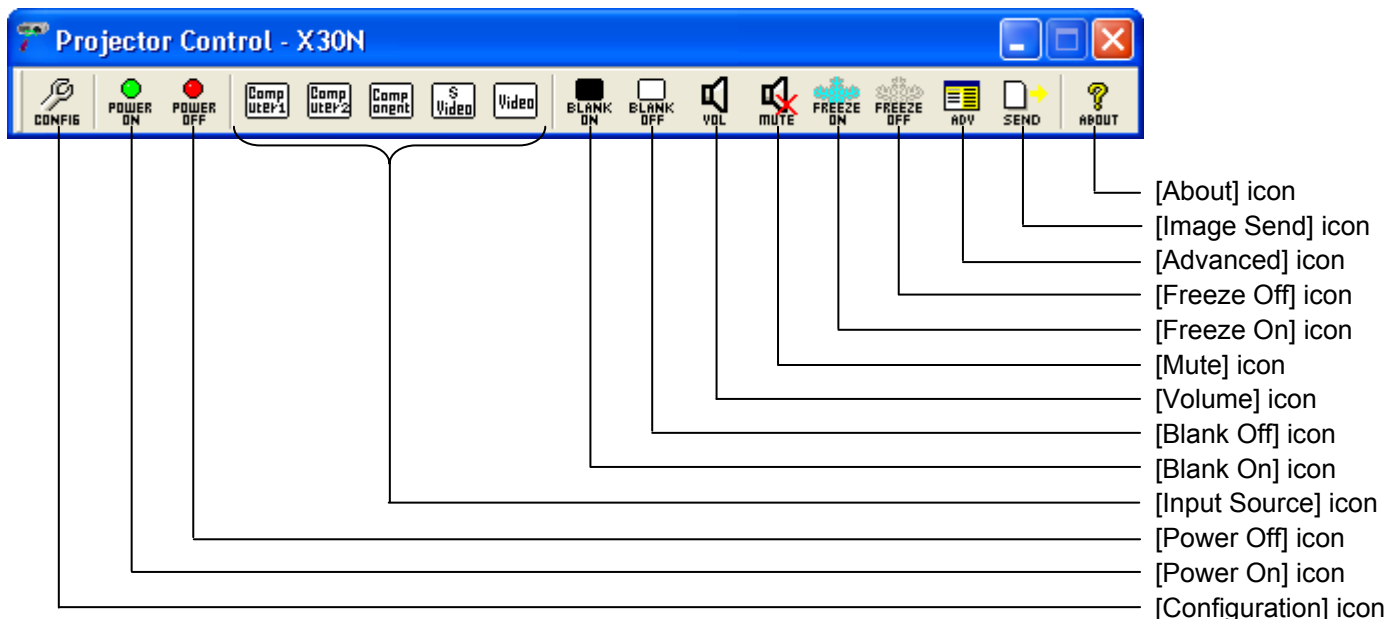
Select Windows [Start] → [Program] → [Projector Tools] → [Projector Control Application]. The login window is appeared.

Enter the username and password that is created by “Projector User Administration Tool”. After logged in, a “Configuration” window is appeared. Please refer the section 3.6 Configure Projector Settings on page 9. Once the configuration is done, click [OK].



### 3.3 Main Window

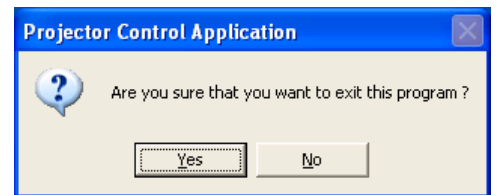
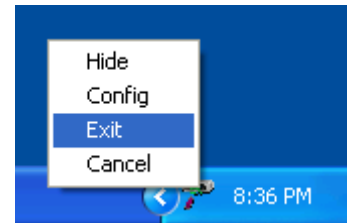
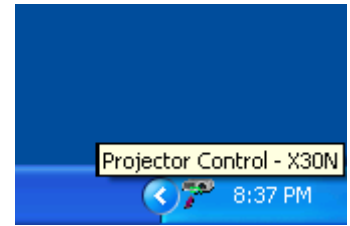
Click the icon to perform each function. The functions are shown below.



Note: Some icons may not show up depending on the model you choose. For example, [Image Send] icon is only for the models CL33X, CL35X, CL67N, CL69N, CL86X, PL90X, PL92X, PL96X, WX36, WX36i, X21i, X26i, X30N, X31, X31i, X35N, X35NK, X36, X36i, X46, X46i, X56, X90 and X90K.

### 3.4 Exit Application

Right click the PJCtrl icon on the task tray at the right-bottom corner and select [exit]. And click [Yes] on the confirmation window. Also you can click the [x] icon on the right top corner of main window to exit application.



### 3.5 Application Minimization

You can hide the main window into the task tray to click the minimization icon on the window. Right click the PJCtrl icon on the task tray and select [Show] to restore window.

### 3.6 Configure Projector Settings

You need to setup the projector settings such as connection type and projector model. Click the [Configuration] icon to configure settings.

#### (1) Projector Model

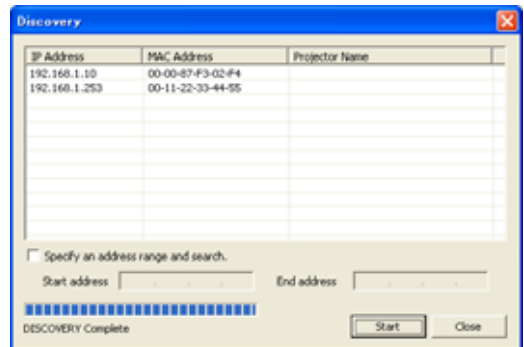
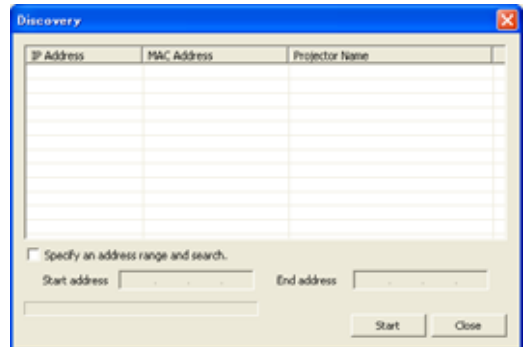
Select a projector model that you want to control from the drop down list. The icons on the main window and Advanced Control items are vary due to the model differences.

The discovery feature is available on CL33X, CL35X, CL67N, CL69N, CL72X, CL73W, CL73X, CL86X, NE7, PL90X, PL92X, PL93X, PL95X, PL96X, WX36, WX36i, X21i, X26i, X30N, X31, X31i, X35N, X35NK, X36, X36i, X46, X46i, X56, X62w, X64w, X90, X90K, X90w, X95, X95K, X95i and X95iK.

The discovery feature will find all projectors on the network if the discovery feature is supported. Once the discovery is done, the discovery result is stored in the software and you can look up this result from "Configuration" window.

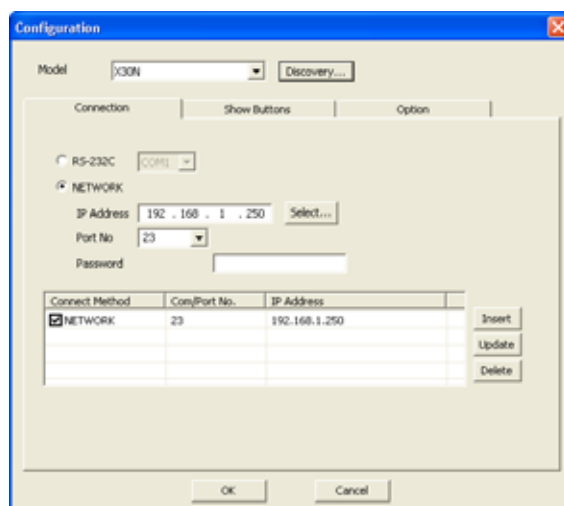
#### [NOTE]

Windows Security Alert will be shown on your display when the discovery function activates, if Windows Firewall is "On" on Windows XP SP2 or later. Please choose "Unblock" to add the software onto the exception list. Also other firewall security software may block the discovery function. In that case, please add the software to the safe list or disable firewall software when you use discovery function.



## (2) Connection Setting

- RS-232C --- Check the radio button and choose COM port number for serial connection.
- NETWORK --- Check the radio button for network connection. Please enter the IP address of projector and port number. You can choose the projector from the discovered list if the discovery function is already run. The default port number of PL75X, PL80X, X70, X75, X75C, X75K, X80, X80C and X80K is 23. The default of CL33X, CL35X, CL67N, CL69N, CL72X, CL73W, CL73X, CL86X, NE7, PL93X, PL96X, WX36, WX36i, X21i, X26i, X30N, X31, X31i, X35N, X35NK, X36, X36i, X46, X46i, X56, X62w, X64w, X90, X90K, X90w, X95, X95K, X95i and X95iK is 23 or 9715. Authentication and Password is available for CL33X, CL35X, CL67N, CL69N, CL72X, CL73W, CL73X, CL86X, NE7, PL90X, PL93X, PL95X, PL92X, PL96X, WX36, WX36i, X21i, X26i, X30N, X31, X31i, X35N, X35NK, X36, X36i, X46, X46i, X56, X62w, X64w, X90, X90K, X90w, X95, X95K, X95i and X95iK.



- Projector List --- The list shows the projectors that you register.
- [Insert] : Insert new projector into the projector list.
  - [Update] : Update selected projector setting and save changes.
  - [Delete] : Delete selected projector from the projector list.
- When you manage multiple projectors at the same time, you need to pick one projector and select a checkbox in order to be a delegate for displaying CH selection and volume level.

Please verify IP settings to make sure the PJCtrl is able to communicate with the projector by ping command.

## (3) Configure Buttons

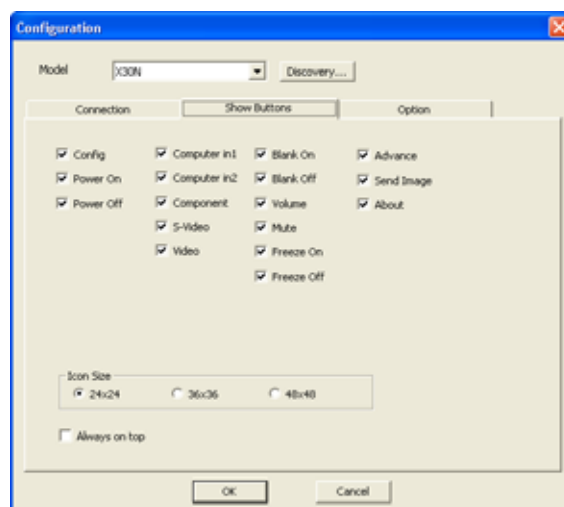
Click the Show Buttons TAB to configure which buttons you want to use. Check the checkbox that you want to show as the button. The configuration window can be displayed if you make a right click on the task tray icon.

### Icon Size:

Also you can choose icon size from 24, 36 or 48 dots.

### Always on top:

“Always on top” option allows that the PJCtrl application always show up foreground.



(4) Option

**Skip user check:**

Check “skip user check” option if you don’t need the user login process at application launch. If you need to check user account at each time, uncheck this option.

**Skip configuration dialog:**

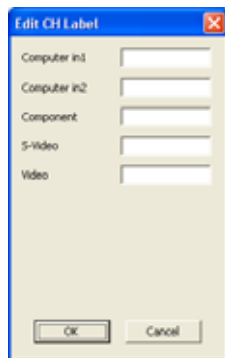
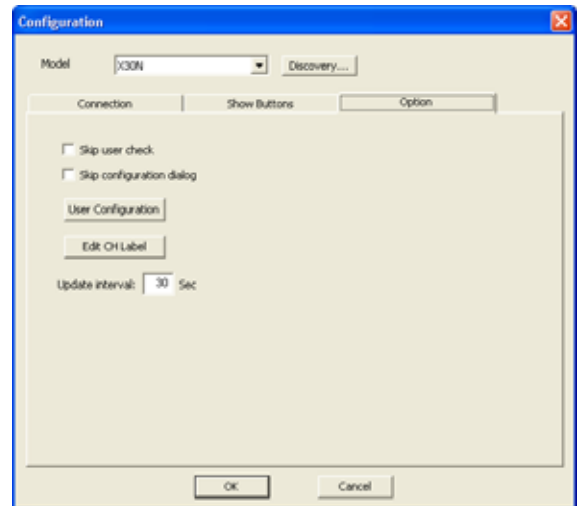
Check “skip configuration dialog” option if you don’t need to show the configuration window at application launch.

**User Configuration:**

Launch Projector User Administration Tool.

**Edit CH Label:**

Display Edit CH Label window.



Configure CH label text that shows underneath each CH icon. The text length is depending on the icon size as shown below.

Icon size 24x24: up to 4 characters

Icon size 36x36: up to 6 characters

Icon size 48x48: up to 8 characters

This is an example how CH label is looks like.



**Update Interval:**

Set the interval period to update CH status from the projector.

### 3.7 Buttons

**Power ON:**

Power the projector on.

**Power OFF:**

Power the projector off.

**Input Source:**

Switch the input source (CH).

The icon of current input channel is shown as "selected" icon (hollow). When you manage multiple projectors, the status of delegated projector is shown.

**Blank ON:**

Blank the screen.

**Blank OFF:**

Un-blank the screen.

**Volume:**

Volume up and down. The control bar appears when you click the icon. When you manage multiple projectors, the delegated projector's value is displayed. Please note that the value may not be the same among multiple projectors.

**Mute:**

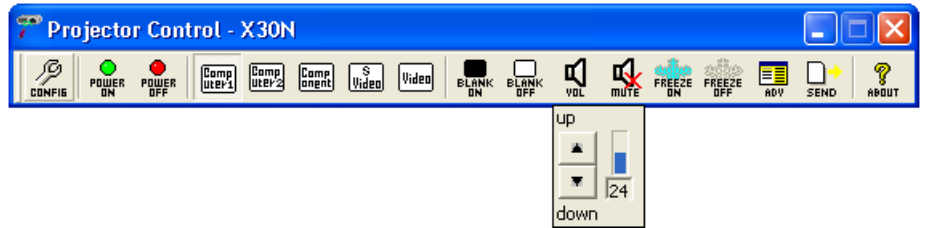
Sound mute. Toggled.

**Freeze ON:**

Freeze image.

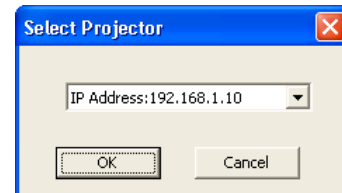
**Freeze OFF:**

Unfreeze image.



### 3.8 Advanced Control

You can access the advanced control functions through Advanced Control Menu. Click the “ADV” icon to open the advanced control window. Choose the target projector to control.



Advanced control items are depending on the projector model.

PL80X / X70 / X80 / X80C / X80K

#### [STATUS] Tab

Function	General Description
Power	Displays the current power status. Off / On / Cool down
Input Source	Displays the current input source. M1-D / RGB / BNC / Video / S-Video / Component
Error Status	Displays the current error status. Normal / Cover Error / Fan Error / Lamp Error / Temp Error / Air Flow Error / Lamp Time Error / Cold Error / Filter Error / Other Error
Blank On /Off	Displays the current blank on/off status. Off / On
Mute	Displays the current mute status. Off / On
Freeze	Displays the current freeze status. Normal / Freeze
Lamp Time	Displays the usage time for the current lamp.
Filter Time	Displays the usage time for the current filter.
Reset	Initialize the selected function. Lamp Time / Filter Time [Execute]: After the confirmation message, the selected function will be initialized.

#### [MAIN] Tab

Function	General Description
Bright	Adjusts the brightness. [-]: Decrease the brightness value. [+]: Increase the brightness value.
Contrast	Adjusts the contrast. [-]: Decrease the contrast value. [+]: Increase the contrast value.
Aspect	Switches the mode for aspect ratio. 4:3 / 16:9 / Small / Normal
Whisper	Turn off/on the whisper mode. Normal / Whisper
Mirror	Switches the mode for mirror status. Normal / H:Invert / V:Invert / H&V:Invert
Language	Switches the menu language. English / French / German / Spanish / Italian / Norwegian / Dutch / Portuguese / Japanese / Simplified Chinese / Korean / Swedish / Russian / Finnish / Polish
Reset	Initialize the selected function. Bright / Contrast [Execute]: After the confirmation message, the selected function will be initialized.

[PICTURE-1] Tab

Function	General Description
Gamma	Switches the gamma mode. Normal / Cinema / Dynamic / Custom
Custom Gamma	Adjusts the gamma data. [-]: Decrease the gamma value. [+]: Increase the gamma value.
Color Temp	Switches the color temperature mode. Low / Middle / High / User
Custom User R	Adjusts the red color level for the user mode of red color temperature. 100 / 90 / 80 / 70 / 60 / 50
Custom User G	Adjusts the green color level for the user mode of green color temperature. 100 / 90 / 80 / 70 / 60 / 50
Custom User B	Adjusts the blue color level for the user mode of blue color temperature. 100 / 90 / 80 / 70 / 60 / 50
Color Bal R	Adjusts the red color balance. [-]: Decrease the red color balance value. [+]: Increase the red color balance value.
Color Bal G	Adjusts the green color balance. [-]: Decrease the green color balance value. [+]: Increase the green color balance value.
Color Bal B	Adjusts the blue color balance (blue). [-]: Decrease the blue color balance value. [+]: Increase the blue color balance value.
Sharpness	Adjusts the sharpness. [-]: Decrease the sharpness value. [+]: Increase the sharpness value
Color	Adjusts the strength of whole color. [-]: Decrease the color value. [+]: Increase the color value
Tint	Adjusts the tint. [-]: Decrease the tint value. [+]: Increase the tint value.
My Memory	Loads the data from the memory. Load1 / Load2 / Load3 / Load4 Saves the current adjustment data into the memory. Save1 / Save2 / Save3 / Save4 [Execute]: Performs each function.
Reset	Initialize the selected function. Color Bal R / Color Bal G / Color Bal B / Sharpness / Color / Tint [Execute]: After the confirmation message, the selected function will be initialized.

[PICTURE-2] Tab

Function	General Description
Position	Adjust the display position. ▲: Increase the vertical position value. ▼: Decrease the vertical position value. ◀: Increase the horizontal position value. ▶: Decrease the horizontal position value.
H Phase	Adjust the horizontal phase to eliminate flicker. [-]: Decrease the horizontal phase value. [+]: Increase the horizontal phase value.
H Size	Adjust the horizontal size. [-]: Decrease the horizontal size value. [+]: Increase the horizontal size value.
Over Scan	Adjust the over-scan ratio. [-]: Decrease the over-scan value. [+]: Increase the over-scan value.
Reset	Initialize the selected function. V Position / H Position / H Size / Over Scan [Execute]: After the confirmation message, the selected function will be initialized.



[INPUT] Tab

Function	General Description
Color Space	Switches the mode for color space. Auto / RGB / SMPTE240 / REC709 / REC601
Component	Switches the function of the COMPONENT port. Component / Scart RGB
Video Format	Switches the mode for video format. Auto / NTSC / PAL / SECAM / NTSC4.43 / M-PAL / N-PAL
3D-YCS	Turns off/on the 3D-YCS. Off / On
Video NR	Switches the noise reduction mode. Low / Middle / High
S2-Aspect	Turns off/on the S2-aspect function Off / On
P.IN P. Input	Switches the signal input port for the child window. Video / S-Video
P.IN P. Position	Switches the display position of the child window. Upper Left / Upper Right / Bottom Left / Bottom Right
P.IN P. Audio	Switches the audio source of the child window. RGB / Video
P.IN P. Size	Switches the display size of the child window. Off / Large / Small
Power Up Input	Switches the signal input port to display just when the projector is turned on. Last Input / M1-D / RGB / BNC / Component / S-Video / Video

[AUTO] Tab

Function	General Description
Adjust	[Execute]: Performs the automatic adjustment feature.
Power Off	Adjusts the time to count down to automatically turn the projector off. [-]: Decrease auto power off time. [+]: Increase auto power off time.
Power On	Turns off/on the auto power on function. Off / On
Search	Turns off/on the automatic signal search function. Off / On

[SCREEN] Tab

Function	General Description
Blank	Switches the mode for the blank screen. Blue / White / Black / MyScreen / Original
Start Up	Switches the mode for the start-up screen. Original / Off / MyScreen
MyScreen Size	Switches the size of the MyScreen. Full / x1
MyScreen Lock	Turn off/on the MyScreen lock function. Off / On
Menu Position	Adjusts the menu position. [▲]: Increase the vertical menu position value. [▼]: Decrease the vertical menu position value. [◀]: Decrease the horizontal menu position value. [▶]: Increase the horizontal menu position value.
Message	Turns off/on the message function. Off / On
Reset	Initialize the selected function. Menu Position V / Menu Position H [Execute]: After the confirmation message, the selected function will be initialized.

[OPTION] Tab

Function	General Description
Volume	Adjusts the volume. [-]: Decrease the volume value. [+]: Increase the volume value.
Speaker	Turns off/on the built-in speaker. Off / On
IR Remote	Turns off/on the remote sensor. Front (Off / On) Rear (Off / On) Top (Off / On)
IR Remote ID	Switches the number as an ID number for remote control. All / 1 / 2 / 3
Auto Adjust	Switches the auto adjustment enable function. Disable / Enable
Lens Type	Switches the lens type currently used. Auto / 1 / 2 / 3 / 4 / 5
Lens Lock	Turns off/on the lens lock function. Off / On

[OTHER] Tab

Function	General Description
Power	Turns off/on the power. Off / On
Input Source	Switches the input source. M1-D / RGB / BNC / Video / S-Video / Component
Blank On / Off	Turns off/on the blank. Off / On
Mute	Turns off/on the mute. Off / On
Freeze	Turn off/on the freeze. Normal / Freeze
Magnify	Adjusts the magnify setting. [-]: Decrease the magnify value. [+]: Increase the magnify value.
Keystone V	Adjusts the vertical keystone distortion. [-]: Decrease the vertical keystone value. [+]: Increase the vertical keystone value.
Keystone H	Adjusts the horizontal keystone distortion. [-]: Decrease the horizontal keystone value. [+]: Increase the horizontal keystone value.
Reset	Initialize the selected function. Keystone V / Keystone H [Execute]: After the confirmation message, the selected function will be initialized.

[STATUS] Tab

Function	General Description
Power	Displays the current power status. Off / On / Cool down
Input Source	Displays the current input source. DVI / RGB1 / RGB2 / Video / S-Video / Component
Error Status	Displays the current error status. Normal / Cover Error / Fan Error / Lamp Error / Temp Error / Air Flow Error / Lamp Time Error / Cold Error / Filter Error / Other Error
Blank On / Off	Displays the current blank on/off status. Off / On
Mute	Displays the current mute status. Off / On
Freeze	Displays the current freeze status. Normal / Freeze
Lamp Time	Displays the usage time for the current lamp.
Filter Time	Displays the usage time for the current filter.
Reset	Initialize the selected function. Lamp Time / Filter Time [Execute]: After the confirmation message, the selected function will be initialized.

[PICTURE] Tab

Function	General Description
Bright	Adjusts the brightness. [-]: Decrease the brightness value. [+]: Increase the brightness value.
Contrast	Adjusts the contrast. [-]: Decrease the contrast value. [+]: Increase the contrast value.
Gamma	Switches the gamma mode. #1-Custom / #2-Custom / #3-Custom / #1-Default / #2-Default / #3-Default
Color Temp	Switches the mode of color temperature. Low / Middle / High / Custom
Color	Adjusts the strength of whole color. [-]: Decrease the color value. [+]: Increase the color value
Tint	Adjusts the tint. [-]: Decrease the tint value. [+]: Increase the tint value.
Sharpness	Adjusts the sharpness. [-]: Decrease the sharpness value. [+]: Increase the sharpness value.
My Memory	Loads the data on the memory. Load1 / Load2 / Load3 / Load4 Saves the current adjustment data into the memory. Save1 / Save2 / Save3 / Save4 [Execute]: Performs each function.
Reset	Initialize the selected function Bright / Contrast / Color / Tint / Sharpness [Execute]: After the confirmation message, the selected function will be initialized.

### Gamma - Custom -

Function	General Description
User Gamma Pattern	Changes the test pattern. Off / 9 steps Gray scale / 15 steps Gray scale / Ramp
User Gamma Point 1	Adjusts the user gamma point 1. [-]: Decrease the user gamma point 1 value. [+]: Increase the user gamma point 1 value.
User Gamma Point 2	Adjusts the user gamma point 2. [-]: Decrease the user gamma point 2 value. [+]: Increase the user gamma point 2 value.
User Gamma Point 3	Adjusts the user gamma point 3. [-]: Decrease the user gamma point 3 value. [+]: Increase the user gamma point 3 value.
User Gamma Point 4	Adjusts the user gamma point 4. [-]: Decrease the user gamma point 4 value. [+]: Increase the user gamma point 4 value.
User Gamma Point 5	Adjusts the user gamma point 5. [-]: Decrease the user gamma point 5 value. [+]: Increase the user gamma point 5 value.
User Gamma Point 6	Adjusts the user gamma point 6. [-]: Decrease the user gamma point 6 value. [+]: Increase the user gamma point 6 value.
User Gamma Point 7	Adjusts the user gamma point 7. [-]: Decrease the user gamma point 7 value. [+]: Increase the user gamma point 7 value.
User Gamma Point 8	Adjusts the user gamma point 8. [-]: Decrease the user gamma point 8 value. [+]: Increase the user gamma point 8 value.

### Color Temp - Custom -

Function	General Description
User Gamma Pattern	Changes the test pattern. Off / 9 steps Gray scale / 15 steps Gray scale / Ramp
Color Temp Gain R	Adjusts the red color temperature gain. [-]: Decrease the red color temp gain value. [+]: Increase the red color temp gain value.
Color Temp Gain G	Adjusts the green color temperature gain. [-]: Decrease the green color temp gain value. [+]: Increase the green color temp gain value.
Color Temp Gain B	Adjusts the blue color temperature gain. [-]: Decrease the blue color temp gain value. [+]: Increase the blue color temp gain value.
Color Temp Offset R	Adjusts the red color temperature offset. [-]: Decrease the red color temperature offset value. [+]: Increase the red color temperature offset value
Color Temp Offset G	Adjusts the green color temperature offset. [-]: Decrease the green color temperature offset value. [+]: Increase the green color temperature offset value
Color Temp Offset B	Adjusts the blue color temperature offset. [-]: Decrease the blue color temperature offset value. [+]: Increase the blue color temperature offset value

### [IMAGE] Tab

Function	General Description
Aspect	Switches the mode for aspect ratio. 4:3 / 16:9 / Small / Normal
Over Scan	Adjusts the over-scan ratio. [-]: Decrease the over-scan value. [+]: Increase the over-scan value.
Position	Adjusts the display position. ▲: Increase the vertical position value. ▼: Decrease the vertical position value. ◀: Increase the horizontal position value. ▶: Decrease the horizontal position value.
H Phase	Adjusts the horizontal phase to eliminate flicker. [-]: Decrease the horizontal phase value. [+]: Increase the horizontal phase value.
H Size	Adjusts the horizontal size. [-]: Decrease the horizontal size value. [+]: Increase the horizontal size value.
Auto Adjust	[Execute]: Performs the automatic adjustment feature.
Reset	Initialize the selected function. Over Scan / V Position / H Position / H Size [Execute]: After the confirmation message, the selected function will be initialized.

[VIDEO QLTY.] Tab

Function	General Description
Progressive	Switches the progress mode. Off / TV / Film
3D-YCS	Switches the 3D-YCS mode. Off / Normal / Still Image
Video NR	Switches the noise reduction mode. Low / Middle / High

[INPUT] Tab

Function	General Description
Color Space	Switches the mode for color space. Auto / RGB / SMPTE240 / REC709 / REC601
Component	Switches the function of COMPONENT VIDEO port. Component / Scart RGB
Video Format	Switches the mode for video format. Auto / NTSC / PAL / SECAM / NTSC4.43 / M-PAL / N-PAL
DVI	Select a signal source of the DVI-D port. DVD / Computer

[SETUP] Tab

Function	General Description
Whisper	Turns off/on the whisper mode. Normal / Whisper
Mirror	Switches the mode for mirror status. Normal / H:Invert / V:Invert / H&V:Invert
Volume	Adjusts the volume. [-]: Decrease the volume value. [+]: Increase the volume value.
Stereo	Switches the internal speaker output mode. Mono / Stereo
IR Remote	Turns off/on the remote sensor. Front (Off / On) Top (Off / On)

[SCREEN] Tab

Function	General Description
Language	Switches the OSD (On Screen Display) language. English / French / German / Spanish / Italian / Norwegian / Dutch / Portuguese / Japanese / Simplified Chinese / Korean / Swedish / Russian / Finnish / Polish / Turkish / Traditional Chinese
Menu Position	Adjusts the menu position. ▲: Increase the vertical menu position value. ▼: Decrease the vertical menu position value. ◀: Decrease the horizontal menu position value. ▶: Increase the horizontal menu position value.
OSD Bright.	Switches the brightness level of the OSD (On Screen Display). [-]: Decrease the OSD brightness value. [+]: Increase the OSD brightness value.
Blank	Switches the mode for the blank screen. Blue / White / Black / MyScreen / Original
Start Up	Switches the mode for the start-up screen. Original / Off / MyScreen
MyScreen Lock	Turns off/on the MyScreen lock function. Off / On
Message	Turns off/on the message function. Off / On
Reset	Initialize the selected function. Menu Position V / Menu Position H [Execute]: After the confirmation message, the selected function will be initialized.

[OPTION] Tab

Function	General Description
One Touch	Turns off/on the automatic keystone correction function. Off / On
Auto Search	Turns on/off the automatic signal search function. Off / On
Auto Off	Adjusts the time to count down to automatically turn the projector off. [-]: Decrease the auto power off time. [+]: Increase the auto power off time.
Auto Adjust	Disable/Enable the automatic adjustment. Disable / Enable

[OTHER] Tab

Function	General Description
Power	Turns off/on the Power. Off / On
Input Source	Switches the input source. DVI / RGB1 / RGB2 / Video / S-Video / Component
Mode	Switches the mode of picture type. Normal / Cinema / Dynamic / Custom ➤ Custom is displayed only. It cannot be set.
Blank On / Off	Turns off/on the blank. Off / On
Mute	Turns off/on the mute. Off / On
Freeze	Turns off/on the freeze. Normal / Freeze
Magnify	Adjusts the magnify setting. [-]: Decrease the magnify value. [+]: Increase the magnify value.
Keystone V	Adjusts the vertical keystone distortion. [-]: Decrease the vertical keystone value. [+]: Increase the vertical keystone value.
Keystone H	Adjusts the horizontal keystone distortion. [-]: Decrease the horizontal keystone value. [+]: Increase the horizontal keystone value.
Auto Keystone	[Execute]: Performs the automatic keystone distortion correction.
Reset	Initialize the selected function. Keystone V / Keystone H [Execute]: After the confirmation message, the selected function will be initialized.

[STATUS] Tab

Function	General Description
Power	Displays the current power status. Off / On / Cool down
Input Source	Displays the current input source. <b>X62w</b> RGB1 / RGB2 / Video / S-Video / Component / MIU <b>X64w</b> Computer1 / Computer2 / Video / S-Video / Component / MIU <b>PL90X / X90 / X90K</b> RGB1 / RGB2 / M1-D / Video / S-Video / Component <b>X90w</b> RGB1 / RGB2 / M1-D / Video / S-Video / Component / MIU <b>PL95X / X95 / X95K / X95i / X95iK</b> RGB1 / RGB2 / HDMI / Video / S-Video / Component / MIU
Error Status	Displays the current error status. Normal / Cover Error / Fan Error / Lamp Error / Temp Error / Air Flow Error / Lamp Time Error / Cold Error / Filter Error / Other Error
Blank On / Off	Displays the current blank on/off status. Off / On
Mute	Displays the current mute status. Off / On
Freeze	Displays the current freeze status. Normal / Freeze
Lamp Time	Displays the usage time for the current lamp.
Filter Time	Displays the usage time for the current filter.
Reset	Initialize the selected function. Lamp Time / Filter Time [Execute]: After the confirmation message, the selected function will be initialized.

[PICTURE] Tab

Function	General Description
Brightness	Adjusts the brightness. [-]: Decrease the brightness value. [+]: Increase the brightness value.
Contrast	Adjusts the contrast. [-]: Decrease the contrast value. [+]: Increase the contrast value.
Gamma	Switches the gamma mode. <b>PL90X / X62w / X90 / X90K / X90w</b> #1-Custom / #2-Custom / #3-Custom / #4-Custom / #5-Custom / #1-Default / #2-Default / #3-Default / #4-Default / #5-Default <b>PL95X / X64w / X95 / X95K / X95i / X95iK</b> #1-Custom / #2-Custom / #3-Custom / #4-Custom / #5-Custom / #6-Custom / #1-Default / #2-Default / #3-Default / #4-Default / #5-Default / #6-Default
Color Temp	Switches the color temperature mode. <b>PL90X / X62w / X90 / X90K / X90w</b> High / Mid / Low / Hi-Bright-1 / Hi-Bright-2 / Custom-High / Custom-Mid / Custom-Low / Custom-Hi-Bright-1 / Custom-Hi-Bright-2 <b>PL95X / X64w / X95 / X95K / X95i / X95iK</b> High / Mid / Low / Hi-Bright-1 / Hi-Bright-2 / Hi-Bright-3 / Custom-High / Custom-Mid / Custom-Low / Custom-Hi-Bright-1 / Custom-Hi-Bright-2 / Custom-Hi-Bright-3
Color	Adjusts the strength of whole color. [-]: Decrease the color value. [+]: Increase the color value
Tint	Adjusts the tint. [-]: Decrease the tint value. [+]: Increase the tint value.
Sharpness	Adjusts the sharpness. [-]: Decrease the sharpness value. [+]: Increase the sharpness value.
Active Iris	Changes the active iris control mode. Off / Theater / Presentation ➤ This function is not displayed for X62w / X64w.
My Memory	Loads the data from the memory. Load1 / Load2 / Load3 / Load4 Saves the current adjustment data into the memory. Save1 / Save2 / Save3 / Save4 [Execute]: Performs each function.
Reset	Initialize the selected function Brightness / Contrast / Color / Tint / Sharpness [Execute]: After the confirmation message, the selected function will be initialized.

## Gamma - Custom -

Function	General Description
User Gamma Pattern	Changes the test pattern. Off / 9 steps Gray scale / 15 steps Gray scale / Ramp
User Gamma Point 1	Adjusts the user gamma point 1. [-]: Decrease the user gamma point 1 value. [+]: Increase the user gamma point 1 value. [Reset]: Initialize the user gamma point 1 value.
User Gamma Point 2	Adjusts the user gamma point 2. [-]: Decrease the user gamma point 2 value. [+]: Increase the user gamma point 2 value. [Reset]: Initialize the user gamma point 2 value.
User Gamma Point 3	Adjusts the user gamma point 3. [-]: Decrease the user gamma point 3 value. [+]: Increase the user gamma point 3 value. [Reset]: Initialize the user gamma point 3 value.
User Gamma Point 4	Adjusts the user gamma point 4. [-]: Decrease the user gamma point 4 value. [+]: Increase the user gamma point 4 value. [Reset]: Initialize the user gamma point 4 value.
User Gamma Point 5	Adjusts the user gamma point 5. [-]: Decrease the user gamma point 5 value. [+]: Increase the user gamma point 5 value. [Reset]: Initialize the user gamma point 5 value.
User Gamma Point 6	Adjusts the user gamma point 6. [-]: Decrease the user gamma point 6 value. [+]: Increase the user gamma point 6 value. [Reset]: Initialize the user gamma point 6 value.
User Gamma Point 7	Adjusts the user gamma point 7. [-]: Decrease the user gamma point 7 value. [+]: Increase the user gamma point 7 value. [Reset]: Initialize the user gamma point 7 value.
User Gamma Point 8	Adjusts the user gamma point 8. [-]: Decrease the user gamma point 8 value. [+]: Increase the user gamma point 8 value. [Reset]: Initialize the user gamma point 8 value.

## Color Temp - Custom -

Function	General Description
User Gamma Pattern	Changes the test pattern. Off / 9 steps Gray scale / 15 steps Gray scale / Ramp
Color Temp Gain R	Adjusts the red color temperature gain. [-]: Decrease the red color temperature gain value. [+]: Increase the red color temperature gain value. [Reset]: Initialize the red color temperature gain value.
Color Temp Gain G	Adjusts the green color temperature gain. [-]: Decrease the green color temperature gain value. [+]: Increase the green color temperature gain value. [Reset]: Initialize the green color temperature gain value.
Color Temp Gain B	Adjusts the blue color temperature gain. [-]: Decrease blue red color temperature gain value. [+]: Increase the blue color temperature gain value. [Reset]: Initialize the blue color temperature gain value.
Color Temp Offset R	Adjusts the red color temperature offset. [-]: Decrease the red color temperature offset value. [+]: Increase the red color temperature offset value. [Reset]: Initialize the red color temperature offset value.
Color Temp Offset G	Adjusts the green color temperature offset. [-]: Decrease the green color temperature offset value. [+]: Increase the green color temperature offset value. [Reset]: Initialize the green color temperature offset value.
Color Temp Offset B	Adjusts the blue color temperature offset. [-]: Decrease the blue color temperature offset value. [+]: Increase the blue color temperature offset value. [Reset]: Initialize the blue color temperature offset value.



[IMAGE] Tab

Function	General Description
Aspect	Switches the mode for aspect ratio. 4:3 / 16:9 / 14:9 / Small / Normal
Over Scan	Adjusts the over-scan ratio [-]: Decrease the over-scan value. [+]: Increase the over-scan value.
Position	Adjusts the display position. [▲]: Increase the vertical position value. [▼]: Decrease the vertical position value. [◀]: Increase the horizontal position value. [▶]: Decrease the horizontal position value.
H Phase	Adjusts the horizontal phase to eliminate flicker. [-]: Decrease the horizontal phase value. [+]: Increase the horizontal phase value.
H Size	Adjusts the horizontal size. [-]: Decrease the horizontal size value. [+]: Increase the horizontal size value.
Auto Adjust	[Execute]: Performs the automatic adjustment feature.
Reset	Initialize the selected function. Over Scan / V Position / H Position / H Size [Execute]: After the confirmation message, the selected function will be initialized.

[INPUT] Tab

Function	General Description
Progressive	Switches the progress mode. Off / TV / Film
Video NR	Switches the noise reduction mode. Low / Mid / High
3D-YCS	Switches the 3D-YCS mode. Off / Movie / Still ➤ This function is not displayed for X62w / X64w.
Color Space	Switches the mode for color space. Auto / RGB / SMPTE240 / REC709 / REC601
Component	Switches the function of the COMPONENT port. Component / Scart RGB
Video Format - Video	Switches the mode for video format of the VIDEO port. Auto / NTSC / PAL / SECAM / NTSC4.43 / M-PAL / N-PAL
Video Format – S-Video	Switches the mode for video format of the S-VIDEO port. Auto / NTSC / PAL / SECAM / NTSC4.43 / M-PAL / N-PAL
HDMI	Changes the HDMI signal mode. Auto / Normal / Enhanced ➤ This function is not displayed for PL90X / X62w / X64w / X90 / X90K / X90w.
M1-D	Changes the M1-D signal mode. Normal / Enhanced ➤ This function is not displayed for PL95X / X62w / X64w / X95 / X95K / X95i / X95iK.
Frame Lock	Turns off/on the frame lock function. Off / On ➤ This function is not displayed for PL95X / X64w / X95 / X95K / X95i / X95iK.
Frame Lock - RGB1	Turns the frame lock function off/on of the RGB IN1 port. Off / On ➤ This function is not displayed for PL90X / X62w / X64w / X90 / X90K / X90w.
Frame Lock-Computer1	Turns the frame lock function off/on of the COMPUTER IN1 port. Off / On ➤ This function is not displayed for PL90X / PL95X / X62w / X90 / X90K / X90w / X95 / X95K / X95i / X95iK.
Frame Lock - RGB2	Turns the frame lock function off/on of the RGB IN2 port. Off / On ➤ This function is not displayed for PL90X / X62w / X64w / X90 / X90K / X90w.
Frame Lock-Computer2	Turns the frame lock function off/on of the COMPUTER IN2 port. Off / On ➤ This function is not displayed for PL90X / PL95X / X62w / X90 / X90K / X90w / X95 / X95K / X95i / X95iK.
Frame Lock - HDMI	Turns the frame lock function off/on of the HDMI port. Off / On ➤ This function is not displayed for PL90X / X62w / X64w / X90 / X90K / X90w.
RGB in - RGB1	Selects the RGB input signal type of the RGB IN1 port. <b>PL95X / X95 / X95K / X95i / X95iK</b> Sync On G Off / Auto <b>PL90X / X62w / X90 / X90K / X90w</b> Sync On G Off / Sync On G On ➤ This function is not displayed for X64w.
Computer in-1	Selects the computer input signal type of the COMPUTER IN1 port. Sync On G Off / Sync On G On ➤ This function is not displayed for PL90X / PL95X / X62w / X90 / X90K / X90w / X95 / X95K / X95i / X95iK.

RGB in - RGB2	Selects the RGB input signal type of the RGB IN2 port. <b>PL95X / X95 / X95K / X95i / X95iK</b> Sync On G Off / Auto <b>PL90X / X62w / X90 / X90K / X90w</b> Sync On G Off / Sync On G On ➤ This function is not displayed for X64w.
Computer in-2	Selects the computer input signal type of the COMPUTER IN2 port. Sync On G Off / Sync On G On ➤ This function is not displayed for PL90X / PL95X / X62w / X90 / X90K / X90w / X95 / X95K / X95i / X95iK.

#### [SETUP] Tab

Function	General Description
Auto Keystone	[Execute]: Performs the automatic keystone distortion.
Keystone V	Corrects the vertical keystone distortion. [-]: Decrease the vertical keystone value. [+]: Increase the vertical keystone value.
Keystone H	Corrects the horizontal keystone distortion. [-]: Decrease the horizontal keystone value. [+]: Increase the horizontal keystone value. ➤ This function is not displayed for X62w / X64w.
Whisper	Turns off/on the whisper mode. Normal / Whisper
Mirror	Switches the mode for mirror status. Normal / H:Invert / V:Invert / H&V:Invert
Volume	Adjusts the volume. [-]: Decrease the volume value. [+]: Increase the volume value. ➤ This function is not displayed for PL90X / PL95X / X90 / X90K / X90w / X95 / X95K / X95i / X95iK.
Speaker	Turns off/on the built-in speaker. Off / On ➤ This function is not displayed for PL90X / PL95X / X62w / X90 / X90K / X90w / X95 / X95K / X95i / X95iK.
Audio RGB1	Assigns the audio port when the RGB IN1 input port is selected. Off / Audio1 / Audio2 / Audio3 ➤ This function is not displayed for PL90X / PL95X / X64w / X90 / X90K / X90w / X95 / X95K / X95i / X95iK.
Audio-Computer1	Assigns the audio port when the COMPUTER IN1 input port is selected. Off / Audio1 / Audio2 / Audio3 ➤ This function is not displayed for PL90X / PL95X / X62w / X90 / X90K / X90w / X95 / X95K / X95i / X95iK.
Audio RGB2	Assigns the audio port when the RGB IN2 input port is selected. Off / Audio1 / Audio2 / Audio3 ➤ This function is not displayed for PL90X / PL95X / X64w / X90 / X90K / X90w / X95 / X95K / X95i / X95iK.
Audio-Computer2	Assigns the audio port when the COMPUTER IN2 input port is selected. Off / Audio1 / Audio2 / Audio3 ➤ This function is not displayed for PL90X / PL95X / X62w / X90 / X90K / X90w / X95 / X95K / X95i / X95iK.
Audio Video	Assigns the audio port when the VIDEO input port is selected. Off / Audio1 / Audio2 / Audio3 ➤ This function is not displayed for PL90X / PL95X / X90 / X90K / X90w / X95 / X95K / X95i / X95iK.
Audio S-Video	Assigns the audio port when the S-VIDEO input port is selected. Off / Audio1 / Audio2 / Audio3 ➤ This function is not displayed for PL90X / PL95X / X90 / X90K / X90w / X95 / X95K / X95i / X95iK.
Audio Component	Assigns the audio port when the COMPONENT input port is selected. Off / Audio1 / Audio2 / Audio3 ➤ This function is not displayed for PL90X / PL95X / X90 / X90K / X90w / X95 / X95K / X95i / X95iK.
Audio MIU	Assigns the audio port when the MIU input port is selected. Off / Audio1 / Audio2 / Audio3 / Audio MIU ➤ This function is not displayed for PL90X / PL95X / X90 / X90K / X90w / X95 / X95K / X95i / X95iK.
Monitor Out-RGB1	Assigns the MONITOR OUT when the RGB IN1 input port is selected. Off / RGB1 ➤ This function is not displayed for PL90X / PL95X / X62w / X64w / X90 / X90K / X90w / X95 / X95K.
Monitor Out-RGB2	Assigns the MONITOR OUT when the RGB IN2 input port is selected. Off / RGB2 ➤ This function is not displayed for PL90X / PL95X / X62w / X64w / X90 / X90K / X90w / X95 / X95K.
Monitor Out-HDMI	Assigns the MONITOR OUT when the HDMI input port is selected. Off / RGB1 / RGB2 ➤ This function is not displayed for PL90X / PL95X / X62w / X64w / X90 / X90K / X90w / X95 / X95K.
Monitor Out-Component	Assigns the MONITOR OUT when the COMPONENT input port is selected. Off / RGB1 / RGB2 ➤ This function is not displayed for PL90X / PL95X / X62w / X64w / X90 / X90K / X90w / X95 / X95K.
Monitor Out-S-Video	Assigns the MONITOR OUT when the S-VIDEO input port is selected. Off / RGB1 / RGB2 ➤ This function is not displayed for PL90X / PL95X / X62w / X64w / X90 / X90K / X90w / X95 / X95K.

Monitor Out-Video	Assigns the MONITOR OUT when the VIDEO input port is selected. Off / RGB1 / RGB2 ➤ This function is not displayed for PL90X / PL95X / X62w / X64w / X90 / X90K / X90w / X95 / X95K.
Monitor Out-MIU	Assigns the MONITOR OUT when the MIU input port is selected. Off / RGB1 / RGB2 ➤ This function is not displayed for PL90X / PL95X / X62w / X64w / X90 / X90K / X90w / X95 / X95K.
Monitor Out Standby	Assigns the MONITOR OUT in the standby mode. Off / RGB1 / RGB2 ➤ This function is not displayed for PL90X / PL95X / X62w / X64w / X90 / X90K / X90w / X95 / X95K.
Reset	Initialize the selected function. <b>X62w / X64w</b> Keystone V <b>PL90X / PL95X / X90 / X90K / X90w / X95 / X95K / X95i / X95iK</b> Keystone V / Keystone H [Execute]: After the confirmation message, the selected function will be initialized.

#### [AUDIO] Tab

This tab is displayed for PL90X / PL95X / X90 / X90K / X90w / X95 / X95K / X95i / X95iK.

Function	General Description
Volume	Adjusts the volume. [-]: Decrease the volume value. [+]: Increase the volume value.
Treble	Adjusts the treble level. [-]: Decrease the treble value. [+]: Increase the treble value.
Bass	Adjusts the bass level. [-]: Decrease the bass value. [+]: Increase the bass value.
SRS WOW	Switches the mode for SRS WOW mode. Off / Mid / High
Speaker	Turns off/on the built-in speaker. Off / On
Audio - RGB1	Assigns the audio port when the RGB IN1 input port is selected. Off / Audio1 / Audio2 / Audio3 / Audio4
Audio - RGB2	Assigns the audio port when the RGB IN2 input port is selected. Off / Audio1 / Audio2 / Audio3 / Audio4
Audio - M1-D	Assigns the audio port when the M1-D input port is selected. Off / Audio1 / Audio2 / Audio3 / Audio4 ➤ This function is not displayed for PL95X / X95 / X95K / X95i / X95iK.
Audio - HDMI	Assigns the audio port when the HDMI input port is selected. Off / Audio1 / Audio2 / Audio3 / Audio4 / Audio HDMI ➤ This function is not displayed for PL90X / X90 / X90K / X90w.
Audio - Video	Assigns the audio port when the VIDEO input port is selected. Off / Audio1 / Audio2 / Audio3 / Audio4
Audio - S-Video	Assigns the audio port when the S-VIDEO input port is selected. Off / Audio1 / Audio2 / Audio3 / Audio4
Audio - Component	Assigns the audio port when the COMPONENT input port is selected. Off / Audio1 / Audio2 / Audio3 / Audio4
Audio MIU	Assigns the audio port when the MIU input port is selected. Off / Audio1 / Audio2 / Audio3 / Audio4 / Audio MIU ➤ This function is not displayed for PL90X / X90 / X90K.
Audio Out Standby	Assigns the audio port in the standby mode. Off / Audio1 / Audio2 / Audio3 / Audio4 ➤ This function is not displayed for PL90X / PL95X / X90 / X90K / X90w / X95 / X95K.
HDMI Audio	Switches the mode for the HDMI audio. 1 / 2 ➤ This function is not displayed for PL90X / X90 / X90K / X90w.

[SCREEN] Tab

Function	General Description
Language	Switches the OSD (On Screen Display) language. English / French / German / Spanish / Italian / Norwegian / Dutch / Portuguese / Japanese / Simplified Chinese / Korean / Swedish / Russian / Finnish / Polish / Turkish / Traditional Chinese
Menu Position	Adjusts the menu position. [▲]: Increase the vertical menu position value. [▼]: Decrease the vertical menu position value. [◀]: Decrease the horizontal menu position value. [▶]: Increase the horizontal menu position value.
Blank	Switches the mode for the blank screen. Blue / White / Black / MyScreen / Original
Start Up	Switches the mode for the start-up screen. Original / Off / MyScreen
MyScreen Lock	Turns off/on the MyScreen lock function. Off / On
Message	Turns off/on the message function. Off / On
Template	Switches the mode for the template screen. Test Pattern / Dot-Line1 / Dot-Line2 / Dot-Line3 / Dot-Line4 ➤ This function is not displayed for PL90X / PL95X / X62w / X64w / X90 / X90K / X90w / X95 / X95K.
Reset	Initialize the selected function. Menu Position V / Menu Position H [Execute]: After the confirmation message, the selected function will be initialized.

[OPTION] Tab

Function	General Description
Auto Search	Turns off/on the automatic signal search function. Off / On
Auto Keystone	Turns off/on the automatic keystone function. Off / On
Auto On	Turns off/on the auto on function. Off / On
Auto Off	Adjusts the time to count down to automatically turn the projector off. [-]: Decrease the auto power off time. [+]: Increase the auto power off time.
My Button-1	Assigns the function for the MY BUTTON-1 button on the included remote control. <b>X62w</b> RGB1 / RGB2 / Video / S-Video / Component / MIU / Information / Auto Keystone Execute / My Memory / Picture Mode / Filter Reset / e-SHOT / Volume+ / Volume- <b>X64w</b> Computer1 / Computer2 / Video / S-Video / Component / MIU / Information / Auto Keystone Execute / My Memory / Picture Mode / Filter Reset / e-SHOT / Volume+ / Volume- / Live Mode / Thumbnail / Slide Show / Directory / Remove Media <b>PL90X / X90 / X90K</b> RGB1 / RGB2 / M1-D / Video / S-Video / Component / Information / Auto Keystone Execute / My Memory / Picture Mode / Filter Reset / Active Iris / e-SHOT / Volume+ / Volume- <b>X90w</b> RGB1 / RGB2 / M1-D / Video / S-Video / Component / MIU / Information / Auto Keystone Execute / My Memory / Picture Mode / Filter Reset / Active Iris / e-SHOT / Volume+ / Volume- <b>PL95X / X95 / X95K</b> RGB1 / RGB2 / HDMI / Video / S-Video / Component / MIU / Information / Auto Keystone Execute / My Memory / Picture Mode / Filter Reset / Active Iris / e-SHOT / Volume+ / Volume- / AV Mute / Live Mode / Thumbnail / Slide Show / Directory / Remove Media <b>X95i / X95iK</b> RGB1 / RGB2 / HDMI / Video / S-Video / Component / MIU / Information / Auto Keystone Execute / My Memory / Picture Mode / Filter Reset / Active Iris / My Image / AV Mute / Template / Live Mode / Thumbnail / Slide Show / Directory / Remove Media / Other
My Button-2	Assigns the function for the MY BUTTON-2 button on the included remote control. <b>X62w</b> RGB1 / RGB2 / Video / S-Video / Component / MIU / Information / Auto Keystone Execute / My Memory / Picture Mode / Filter Reset / e-SHOT / Volume+ / Volume- <b>X64w</b> Computer1 / Computer2 / Video / S-Video / Component / MIU / Information / Auto Keystone Execute / My Memory / Picture Mode / Filter Reset / e-SHOT / Volume+ / Volume- / Live Mode / Thumbnail / Slide Show / Directory / Remove Media <b>PL90X / X90 / X90K</b> RGB1 / RGB2 / M1-D / Video / S-Video / Component / Information / Auto Keystone Execute / My Memory / Picture Mode / Filter Reset / Active Iris / e-SHOT / Volume+ / Volume- <b>X90w</b> RGB1 / RGB2 / M1-D / Video / S-Video / Component / MIU / Information / Auto Keystone Execute / My Memory / Picture Mode / Filter Reset / Active Iris / e-SHOT / Volume+ / Volume- <b>PL95X / X95 / X95K</b> RGB1 / RGB2 / HDMI / Video / S-Video / Component / MIU / Information / Auto Keystone Execute / My Memory / Picture Mode / Filter Reset / Active Iris / e-SHOT / Volume+ / Volume- / AV Mute / Live Mode / Thumbnail / Slide Show / Directory / Remove Media <b>X95i / X95iK</b> RGB1 / RGB2 / HDMI / Video / S-Video / Component / MIU / Information / Auto Keystone Execute / My Memory / Picture Mode / Filter Reset / Active Iris / My Image / AV Mute / Template / Live Mode / Thumbnail / Slide Show / Directory / Remove Media / Other
My Source	Assigns the input port for the MY SOURCE/DOC.CAMERA button on the included remote control. RGB1 / RGB2 / HDMI / Video / S-Video / Component / MIU ➤ This function is not displayed for PL90X / PL95X / X62w / X64w / X90 / X90K / X90w / X95 / X95K.
C.C. - Display	Selects the Closed Caption Display setting. Off / On / Auto ➤ This function is not displayed for PL90X / PL95X / X62w / X90 / X90K / X90w / X95 / X95K.
C.C. - Mode	Selects the Closed Caption Mode setting. Captions / Text ➤ This function is not displayed for PL90X / PL95X / X62w / X90 / X90K / X90w / X95 / X95K.
C.C. - Channel	Selects the Closed Caption Channel setting. 1 / 2 / 3 / 4 ➤ This function is not displayed for PL90X / PL95X / X62w / X90 / X90K / X90w / X95 / X95K.

## Service

Function	General Description
Auto Adjust	Selects the automatic adjustment mode. <b>PL95X / X64w / X95 / X95K / X95i / X95iK</b> Disable / Fast / Fine <b>PL90X / X62w / X90 / X90K / X90w</b> Disable / Enable
Remote Receiv.	Turns off/on the remote sensor. <b>PL90X / PL95X / X90 / X90K / X90w / X95 / X95K / X95i / X95iK</b> Front (Off / On) Rear (Off / On) Top (Off / On) ➤ This function is not displayed for X62w / X64w.
Remote Freq. - Normal	Changes the projector's remote sensor off/on of the normal frequency. Disable / Enable
Remote Freq. - High	Changes the projector's remote sensor off/on of the high frequency. Disable / Enable

## [OTHER] Tab

Function	General Description
Power	Turns off/on the power. Off / On
Input Source	Switches the input source. <b>X62w</b> RGB1 / RGB2 / Video / S-Video / Component / MIU <b>X64w</b> Computer1 / Computer2 / Video / S-Video / Component / MIU <b>PL90X / X90 / X90K</b> RGB1 / RGB2 / M1-D / Video / S-Video / Component <b>X90w</b> RGB1 / RGB2 / M1-D / Video / S-Video / Component / MIU <b>PL95X / X95 / X95K / X95i / X95iK</b> RGB1 / RGB2 / HDMI / Video / S-Video / Component / MIU
Picture Mode	Switches the picture mode. <b>PL90X / X62w / X90 / X90K / X90w</b> Normal / Cinema / Dynamic / Board(Black) / Board(Green) / White Board / Custom <b>PL95X / X64w / X95 / X95K / X95i / X95iK</b> Normal / Cinema / Dynamic / Board(Black) / Board(Green) / White Board / Daytime / Custom ➤ Custom is displayed only. It cannot be set.
Blank On / Off	Turns off/on the blank. Off / On
Mute	Turns off/on the mute. Off / On
Freeze	Turns off/on the freeze. Normal / Freeze
Magnify	Adjusts the magnify setting [-]: Decrease the magnify value. [+]: Increase the magnify value.
e-SHOT	Displays the e-SHOT data. Off / Image1 / Image2 / Image3 / Image4 ➤ This function is not displayed for X95i / X95iK.
My Image	Displays the My Image data. Off / Image1 / Image2 / Image3 / Image4 ➤ This function is not displayed for PL90X / PL95X / X62w / X64w / X90 / X90K / X90w / X95 / X95K.

[STATUS] Tab

Function	General Description
Power	Displays the current power status. On / Standby / Cool down
Input Source	Displays the current input source. Computer in1 / Computer in2 / Component / S-Video / Video
Error Status	Displays the current error status. Normal / Cover Error / Fan Error / Lamp Error / Temp Error / Air Flow Error / Cold Error / Filter Error / Other Error
Blank On/Off	Displays the current blank on/off status. On / Off
Mute	Displays the current mute status. On / Off
Freeze	Displays the current freeze status. Normal / Freeze
Lamp Time	Displays the usage time for the current lamp.
Filter Time	Displays the usage time for the current filter.
Reset	Initialize the selected function. Lamp Time / Filter Time [Execute]: After the confirmation message, the selected function will be initialized.

[PICTURE] Tab

Function	General Description
Brightness	Adjusts the brightness. [-]: Decrease the brightness value. [+]: Increase the brightness value.
Contrast	Adjusts the contrast. [-]: Decrease the contrast value. [+]: Increase the contrast value.
Gamma	Switches the gamma mode. #1 Custom / #2 Custom / #3 Custom / #4 Custom / #5 Custom / #6 Custom / #1 Default / #2 Default / #3 Default / #4 Default / #5 Default / #6 Default /
Color Temp	Switches the color temperature mode. High / Mid / Low / Hi-Bright-1 / Hi-Bright-2 / Hi-Bright-3 / #1 Custom / #2 Custom / #3 Custom / #4 Custom / #5 Custom / #6 Custom
Color	Adjusts the strength of whole color. [-]: Decrease the color value. [+]: Increase the color value
Tint	Adjusts the tint. [-]: Decrease the tint value. [+]: Increase the tint value.
Sharpness	Adjusts the sharpness. [-]: Decrease the sharpness value. [+]: Increase the sharpness value.
Active Iris	Changes the active iris control mode. Presentation / Theater / Off
My Memory	Loads the data from the memory. Load1 / Load2 / Load3 / Load4 Saves the current adjustment data into the memory. Save1 / Save2 / Save3 / Save4 [Execute]: Performs each function.
Reset	Initialize the selected function Brightness / Contrast / Color / Tint / Sharpness [Execute]: After the confirmation message, the selected function will be initialized.

## Gamma - Custom -

Function	General Description
User Gamma Pattern	Changes the test pattern. Off / 9 Steps Gray Scale / 15 Steps Gray Scale / Ramp
User Gamma Point 1	Adjusts the user gamma point 1. [-]: Decrease the user gamma point 1 value. [+]: Increase the user gamma point 1 value. [Reset]: Initialize the user gamma point 1 value.
User Gamma Point 2	Adjusts the user gamma point 2. [-]: Decrease the user gamma point 2 value. [+]: Increase the user gamma point 2 value. [Reset]: Initialize the user gamma point 2 value.
User Gamma Point 3	Adjusts the user gamma point 3. [-]: Decrease the user gamma point 3 value. [+]: Increase the user gamma point 3 value. [Reset]: Initialize the user gamma point 3 value.
User Gamma Point 4	Adjusts the user gamma point 4. [-]: Decrease the user gamma point 4 value. [+]: Increase the user gamma point 4 value. [Reset]: Initialize the user gamma point 4 value.
User Gamma Point 5	Adjusts the user gamma point 5. [-]: Decrease the user gamma point 5 value. [+]: Increase the user gamma point 5 value. [Reset]: Initialize the user gamma point 5 value.
User Gamma Point 6	Adjusts the user gamma point 6. [-]: Decrease the user gamma point 6 value. [+]: Increase the user gamma point 6 value. [Reset]: Initialize the user gamma point 6 value.
User Gamma Point 7	Adjusts the user gamma point 7. [-]: Decrease the user gamma point 7 value. [+]: Increase the user gamma point 7 value. [Reset]: Initialize the user gamma point 7 value.
User Gamma Point 8	Adjusts the user gamma point 8. [-]: Decrease the user gamma point 8 value. [+]: Increase the user gamma point 8 value. [Reset]: Initialize the user gamma point 8 value.

## Color Temp - Custom -

Function	General Description
User Gamma Pattern	Changes the test pattern. Off / 9 Steps Gray Scale / 15 Steps Gray Scale / Ramp
Color Temp Gain R	Adjusts the red color temperature gain. [-]: Decrease the red color temperature gain value. [+]: Increase the red color temperature gain value. [Reset]: Initialize the red color temperature gain value.
Color Temp Gain G	Adjusts the green color temperature gain. [-]: Decrease the green color temperature gain value. [+]: Increase the green color temperature gain value. [Reset]: Initialize the green color temperature gain value.
Color Temp Gain B	Adjusts the blue color temperature gain. [-]: Decrease the blue color temperature gain value. [+]: Increase the blue color temperature gain value. [Reset]: Initialize the blue color temperature gain value.
Color Temp Offset R	Adjusts the red color temperature offset. [-]: Decrease the red color temperature offset value. [+]: Increase the red color temperature offset value. [Reset]: Initialize the red color temperature offset value.
Color Temp Offset G	Adjusts the green color temperature offset. [-]: Decrease the green color temperature offset value. [+]: Increase the green color temperature offset value. [Reset]: Initialize the green color temperature offset value.
Color Temp Offset B	Adjusts the blue color temperature offset. [-]: Decrease the blue color temperature offset value. [+]: Increase the blue color temperature offset value. [Reset]: Initialize the blue color temperature offset value.



[IMAGE] Tab

Function	General Description
Aspect	Switches the mode for aspect ratio. Normal / 4:3 / 16:9 / 16:10 / 14:9
Over Scan	Adjusts the over-scan ratio. [-]: Decrease the over scan value. [+]: Increase the over scan value.
Position	Adjusts the display position. [▲]: Increase the vertical position value. [▼]: Decrease the vertical position value. [◀]: Increase the horizontal position value. [▶]: Decrease the horizontal position value.
H Phase	Adjusts the horizontal phase to eliminate flicker. [-]: Decrease the horizontal phase value. [+]: Increase the horizontal phase value.
H Size	Adjusts the horizontal size. [-]: Decrease the horizontal size value. [+]: Increase the horizontal size value.
Auto Adjust	[Execute]: Performs the automatic adjustment feature.
Reset	Initialize the selected function. Over Scan / V Position / H Position / H Size [Execute]: After the confirmation message, the selected function will be initialized.

[INPUT] Tab

Function	General Description
Progressive	Switches the progress mode. TV / FILM / Off
Video NR	Switches the noise reduction mode. High / Mid / Low
Color Space	Switches the mode for color space. Auto / RGB / SMPTE240 / REC709 / REC601
Component	Switches the function of the COMPONENT port. Component / Scart RGB
S-Video Format	Switches the mode for video format of the S-VIDEO port. Auto / NTSC / PAL / SECAM / NTSC4.43 / M-PAL / N-PAL
C-Video Format	Switches the mode for video format of the VIDEO port. Auto / NTSC / PAL / SECAM / NTSC4.43 / M-PAL / N-PAL
Frame Lock - Computer in1	Selects the frame lock function on/off of the COMPUTER IN1 port. On / Off
Frame Lock - Computer in2	Selects the frame lock function on/off of the COMPUTER IN2 port. On / Off
Computer in1	Selects the computer input signal type of the COMPUTER IN1 port. Auto / Sync On G Off
Computer in2	Selects the computer input signal type of the COMPUTER IN2 port. Auto / Sync On G Off

[SETUP] Tab

Function	General Description
Auto Keystone	[Execute]: Performs the automatic keystone distortion correction.
Keystone V	Corrects the vertical keystone distortion. [-]: Decrease the vertical keystone value. [+]: Increase the vertical keystone value.
Eco Mode	Turns off/on the eco mode. Normal / Eco
Mirror	Switches the mode for mirror status. Normal / H:Invert / V:Invert / H&V:Invert
Standby Mode	Switches the standby mode setting. Normal / Saving
Monitor Out - Computer in1	Assigns the MONITOR OUT when the COMPUTER IN1 input port is selected. Computer in1 / Off
Monitor Out - Computer in2	Assigns the MONITOR OUT when the COMPUTER IN2 input port is selected. Computer in2 / Off
Monitor Out - Component	Assigns the MONITOR OUT when the COMPONENT input port is selected. Computer in1 / Computer in2 / Off
Monitor Out - S-Video	Assigns the MONITOR OUT when the S-VIDEO input port is selected. Computer in1 / Computer in2 / Off
Monitor Out - Video	Assigns the MONITOR OUT when the VIDEO input port is selected. Computer in1 / Computer in2 / Off
Monitor Out - Standby	Assigns the MONITOR OUT in the standby mode. Computer in1 / Computer in2 / Off
Reset	Initialize the selected function. Keystone V [Execute]: After the confirmation message, the selected function will be initialized.

[AUDIO] Tab

Function	General Description
Volume	Adjusts the volume. [-]: Decrease the volume value. [+]: Increase the volume value.
Speaker	Turns on/off the built-in speaker. On / Off
Audio Source - Computer in1	Assigns the audio port when the COMPUTER IN1 input port is selected. Off / Audio1 / Audio2 / Audio3
Audio Source - Computer in2	Assigns the audio port when the COMPUTER IN2 input port is selected. Off / Audio1 / Audio2 / Audio3
Audio Source - Component	Assigns the audio port when the COMPONENT input port is selected. Off / Audio1 / Audio2 / Audio3
Audio Source - S-Video	Assigns the audio port when the S-VIDEO input port is selected. Off / Audio1 / Audio2 / Audio3
Audio Source - Video	Assigns the audio port when the VIDEO input port is selected. Off / Audio1 / Audio2 / Audio3
Audio Out Standby	Assigns the audio port in the standby mode. Off / Audio1 / Audio2 / Audio3

[SCREEN] Tab

Function	General Description
Language	Switches the OSD (On Screen Display) language. English / French / German / Spanish / Italian / Norwegian / Dutch / Portuguese / Japanese / Simplified Chinese / Korean / Swedish / Russian / Finnish / Polish / Turkish / Traditional Chinese
Menu Position	Adjusts the menu position. ▲: Increase the vertical menu position value. ▼: Decrease the vertical menu position value. ◀: Decrease the horizontal menu position value. ▶: Increase the horizontal menu position value.
Blank	Switches the mode for the blank screen. MyScreen / Original / Blue / White / Black
Start Up	Switches the mode for the start-up screen. MyScreen / Original / Off
MyScreen Lock	Turns on/off the MyScreen lock function. On / Off
Message	Turns on/off the message function. On / Off
Template	Switches the mode for the template screen. Test Pattern / Dot-Line1 / Dot-Line2 / Dot-Line3 / Dot-Line4
C.C. - Display	Selects the Closed Caption Display setting. Auto / On / Off
C.C. - Mode	Selects the Closed Caption Mode setting. Captions / Text
C.C. - Channel	Selects the Closed Caption Channel setting. 1 / 2 / 3 / 4
Reset	Initialize the selected function. Menu Position V / Menu Position H [Execute]: After the confirmation message, the selected function will be initialized.

[OPTION] Tab

Function	General Description
Auto Search	Turns on/off the automatic signal search function. On / Off
Auto Keystone	Turns on/off the automatic keystone function. On / Off
Direct On	Turns on/off the direct on function. On / Off
Auto Off	Adjusts the time to count down to automatically turn the projector off. [-]: Decrease the auto power off time. [+]: Increase the auto power off time.
My Button-1	Assigns the function for the MY BUTTON-1 button on the included remote control. Computer in1 / Computer in2 / Component / S-Video / Video / Information / Auto Keystone Execute / My Memory / Active Iris / Picture Mode / Filter Reset / Template / AV Mute / My Image / Messenger / Other
My Button-2	Assigns the function for the MY BUTTON-2 button on the included remote control. Computer in1 / Computer in2 / Component / S-Video / Video / Information / Auto Keystone Execute / My Memory / Active Iris / Picture Mode / Filter Reset / Template / AV Mute / My Image / Messenger / Other
My Source	Assigns the input port for the MY SOURCE/DOC.CAMERA button on the included remote control. Computer in1 / Computer in2 / Component / S-Video / Video

Service

Function	General Description
Remote Frequency - Normal	Changes the projector's remote sensor off/on of the normal frequency. Disable / Enable
Remote Frequency - High	Changes the projector's remote sensor off/on of the high frequency. Disable / Enable

[OTHER] Tab

Function	General Description
Power	Turns on/off the power. On / Off
Input Source	Switches the input source. Computer in1 / Computer in2 / Component / S-Video / Video
Picture Mode	Switches the picture mode. Normal / Cinema / Dynamic / Board(Black) / Board(Green) / Whiteboard / Daytime / Custom ➤ Custom is displayed only. It cannot be set.
Blank On/Off	Turns on/off the blank. On / Off
Mute	Turns on/off the mute. On / Off
Freeze	Turns off/on the freeze. Normal / Freeze
Template On/Off	Turns on/off the template screen. On / Off
Magnify	Adjusts the magnify setting. [-]: Decrease the magnify value. [+]: Increase the magnify value.
My Image	Displays the My Image data. Off / Image-1 / Image-2 / Image-3 / Image-4
My Image Delete	Deletes the My Image data. Image-1 / Image-2 / Image-3 / Image-4

[STATUS] Tab

Function	General Description
Power	Displays the current power status. On / Standby / Cool down
Input Source	Displays the current input source. Computer in1 / Computer in2 / LAN / USB TYPE A / USB TYPE B / HDMI / Component / S-Video / Video
Error Status	Displays the current error status. Normal / Cover Error / Fan Error / Lamp Error / Temp Error / Air Flow Error / Cold Error / Filter Error / Other Error
Blank On/Off	Displays the current blank on/off status. On / Off
Mute	Displays the current mute status. On / Off
Freeze	Displays the current freeze status. Normal / Freeze
Lamp Time	Displays the usage time for the current lamp.
Filter Time	Displays the usage time for the current filter.
Reset	Initialize the selected function. Lamp Time / Filter Time [Execute]: After the confirmation message, the selected function will be initialized.

[PICTURE] Tab

Function	General Description
Brightness	Adjusts the brightness. [-]: Decrease the brightness value. [+]: Increase the brightness value.
Contrast	Adjusts the contrast. [-]: Decrease the contrast value. [+]: Increase the contrast value.
Gamma	Switches the gamma mode. Custom-1 / Custom-2 / Custom-3 / Custom-4 / Custom-5 / Custom-6 / Default-1 / Default-2 / Default-3 / Default-4 / Default-5 / Default-6 /
Color Temp	Switches the color temperature mode. High / Mid / Low / Hi-Bright-1 / Hi-Bright-2 / Hi-Bright-3 / Custom-1 / Custom-2 / Custom-3 / Custom-4 / Custom-5 / Custom-6
Color	Adjusts the strength of whole color. [-]: Decrease the color value. [+]: Increase the color value
Tint	Adjusts the tint. [-]: Decrease the tint value. [+]: Increase the tint value.
Sharpness	Adjusts the sharpness. [-]: Decrease the sharpness value. [+]: Increase the sharpness value.
Active Iris	Changes the active Iris control mode. Presentation / Theater / Off
My Memory	Loads the data from the memory. Load-1 / Load-2 / Load-3 / Load-4 Saves the current adjustment data into the memory. Save-1 / Save-2 / Save-3 / Save-4 [Execute]: Performs each function.
Reset	Initialize the selected function Brightness / Contrast / Color / Tint / Sharpness [Execute]: After the confirmation message, the selected function will be initialized.

## Gamma - Custom -

Function	General Description
Test Pattern	Changes the test pattern. Off / 9 Steps Gray Scale / 15 Steps Gray Scale / Ramp
Gamma Point 1	Adjusts the user gamma point 1. [-]: Decrease the user gamma point 1 value. [+]: Increase the user gamma point 1 value. [Reset]: Initialize the user gamma point 1 value.
Gamma Point 2	Adjusts the user gamma point 2. [-]: Decrease the user gamma point 2 value. [+]: Increase the user gamma point 2 value. [Reset]: Initialize the user gamma point 2 value.
Gamma Point 3	Adjusts the user gamma point 3. [-]: Decrease the user gamma point 3 value. [+]: Increase the user gamma point 3 value. [Reset]: Initialize the user gamma point 3 value.
Gamma Point 4	Adjusts the user gamma point 4. [-]: Decrease the user gamma point 4 value. [+]: Increase the user gamma point 4 value. [Reset]: Initialize the user gamma point 4 value.
Gamma Point 5	Adjusts the user gamma point 5. [-]: Decrease the user gamma point 5 value. [+]: Increase the user gamma point 5 value. [Reset]: Initialize the user gamma point 5 value.
Gamma Point 6	Adjusts the user gamma point 6. [-]: Decrease the user gamma point 6 value. [+]: Increase the user gamma point 6 value. [Reset]: Initialize the user gamma point 6 value.
Gamma Point 7	Adjusts the user gamma point 7. [-]: Decrease the user gamma point 7 value. [+]: Increase the user gamma point 7 value. [Reset]: Initialize the user gamma point 7 value.
Gamma Point 8	Adjusts the user gamma point 8. [-]: Decrease the user gamma point 8 value. [+]: Increase the user gamma point 8 value. [Reset]: Initialize the user gamma point 8 value.

## Color Temp - Custom -

Function	General Description
Test Pattern	Changes the test pattern. Off / 9 Steps Gray Scale / 15 Steps Gray Scale / Ramp
Color Temp Gain R	Adjusts the red color temperature gain. [-]: Decrease the red color temperature gain value. [+]: Increase the red color temperature gain value. [Reset]: Initialize the red color temperature gain value.
Color Temp Gain G	Adjusts the green color temperature gain. [-]: Decrease the green color temperature gain value. [+]: Increase the green color temperature gain value. [Reset]: Initialize the green color temperature gain value.
Color Temp Gain B	Adjusts the blue color temperature gain. [-]: Decrease the blue color temperature gain value. [+]: Increase the blue color temperature gain value. [Reset]: Initialize the blue color temperature gain value.
Color Temp Offset R	Adjusts the red color temperature offset. [-]: Decrease the red color temperature offset value. [+]: Increase the red color temperature offset value. [Reset]: Initialize the red color temperature offset value.
Color Temp Offset G	Adjusts the green color temperature offset. [-]: Decrease the green color temperature offset value. [+]: Increase the green color temperature offset value. [Reset]: Initialize the green color temperature offset value.
Color Temp Offset B	Adjusts the blue color temperature offset. [-]: Decrease the blue color temperature offset value. [+]: Increase the blue color temperature offset value. [Reset]: Initialize the blue color temperature offset value.

[IMAGE] Tab

Function	General Description
Aspect	Switches the mode for aspect ratio. <b>CL67N / CL69N / PL92X / X31 / X36 / X46</b> Normal / 4:3 / 16:9 / 16:10 / 14:9 <b>WX36</b> Normal / 4:3 / 16:9 / 16:10 / 14:9 / Native
Over Scan	Adjusts the over-scan ratio. [-]: Decrease the over-scan value. [+]: Increase the over-scan value.
Position	Adjusts the display position. [▲]: Increase the vertical position value. [▼]: Decrease the vertical position value. [◀]: Increase the horizontal position value. [▶]: Decrease the horizontal position value.
H Phase	Adjusts the horizontal phase to eliminate flicker. [-]: Decrease the horizontal phase value. [+]: Increase the horizontal phase value.
H Size	Adjusts the horizontal size. [-]: Decrease the horizontal size value. [+]: Increase the horizontal size value.
Auto Adjust	[Execute]: Performs the automatic adjustment feature.
Reset	Initialize the selected function. Over Scan / V Position / H Position / H Size [Execute]: After the confirmation message, the selected function will be initialized.

[INPUT] Tab

Function	General Description
Progressive	Switches the progress mode. TV / FILM / Off
Video NR	Switches the noise reduction mode. High / Mid / Low
Color Space	Switches the mode for color space. Auto / RGB / SMPTE240 / REC709 / REC601
Component	Switches the function of the COMPONENT port. Component / Scart RGB
S-Video Format	Switches the mode for video format of the S-VIDEO port. Auto / NTSC / PAL / SECAM / NTSC4.43 / M-PAL / N-PAL
C-Video Format	Switches the mode for video format of the VIDEO port. Auto / NTSC / PAL / SECAM / NTSC4.43 / M-PAL / N-PAL
HDMI Format	Switches the video format for an input from the HDMI port. Auto / Video / Computer
HDMI Range	Changes the digital range for input from the HDMI port. Auto / Normal / Enhanced
Computer in1	Selects the computer input signal type of the COMPUTER IN1 port. Auto / Sync On G Off
Computer in2	Selects the computer input signal type of the COMPUTER IN2 port. Auto / Sync On G Off
Frame Lock - Computer in1	Selects the frame lock function on/off of the COMPUTER IN1 port. On / Off
Frame Lock - Computer in2	Selects the frame lock function on/off of the COMPUTER IN2 port. On / Off
Frame Lock - HDMI	Selects the frame lock function on/off of the HDMI port. On / Off

[SETUP] Tab

Function	General Description
Auto Keystone	[Execute]: Performs the automatic keystone distortion correction.
Keystone V	Adjusts the vertical keystone distortion [-]: Decrease the vertical keystone value. [+]: Increase the vertical keystone value.
Auto Eco Mode	Turns on/off the auto eco mode. On / Off
Eco Mode	Turns off/on the eco mode. Normal / Eco
Mirror	Switches the mode for mirror status. Normal / H:Invert / V:Invert / H&V:Invert
Standby Mode	Switches the standby mode setting. Normal / Saving
Monitor Out - Computer in1	Assigns the MONITOR OUT when the COMPUTER IN1 input port is selected. Computer in1 / Off
Monitor Out - Computer in2	Assigns the MONITOR OUT when the COMPUTER IN2 input port is selected. Computer in2 / Off
Monitor Out - LAN	Assigns the MONITOR OUT when the LAN input port is selected. Computer in1 / Computer in2 / Off
Monitor Out - USB TYPE A	Assigns the MONITOR OUT when the USB TYPE A input port is selected. Computer in1 / Computer in2 / Off
Monitor Out - USB TYPE B	Assigns the MONITOR OUT when the USB TYPE B input port is selected. Computer in1 / Computer in2 / Off
Monitor Out - HDMI	Assigns the MONITOR OUT when the HDMI input port is selected. Computer in1 / Computer in2 / Off
Monitor Out - Component	Assigns the MONITOR OUT when the COMPONENT input port is selected. Computer in1 / Computer in2 / Off
Monitor Out - S-Video	Assigns the MONITOR OUT when the S-VIDEO input port is selected. Computer in1 / Computer in2 / Off
Monitor Out - Video	Assigns the MONITOR OUT when the VIDEO input port is selected. Computer in1 / Computer in2 / Off
Monitor Out - Standby	Assigns the MONITOR OUT in the standby mode. Computer in1 / Computer in2 / Off
Reset	Initialize the selected function. Keystone V [Execute]: After the confirmation message, the selected function will be initialized.

[AUDIO] Tab

Function	General Description
Volume	Adjusts the volume. [-]: Decrease the volume value. [+]: Increase the volume value.
Speaker	Turns on/off the built-in speaker. On / Off
Mic Level	Switches the input level to match that of the microphone connected to the MIC port. High / Low
Mic Volume	Adjusts the volume of the microphone connected to the MIC port. [-]: Decrease the volume of the microphone. [+]: Increase the volume of the microphone.
Audio Source - Computer in1	Assigns the audio port when the COMPUTER IN1 input port is selected. Off / Audio in1 / Audio in2 / Audio in3
Audio Source - Computer in2	Assigns the audio port when the COMPUTER IN2 input port is selected. Off / Audio in1 / Audio in2 / Audio in3
Audio Source - LAN	Assigns the audio port when the LAN input port is selected. Off / Audio in1 / Audio in2 / Audio in3
Audio Source - USB TYPE A	Assigns the audio port when the USB TYPE A input port is selected. Off / Audio in1 / Audio in2 / Audio in3
Audio Source - USB TYPE B	Assigns the audio port when the USB TYPE B input port is selected. Off / Audio in1 / Audio in2 / Audio in3
Audio Source - HDMI	Assigns the audio port when the HDMI input port is selected. Off / Audio in1 / Audio in2 / Audio in3 / Audio HDMI
Audio Source - Component	Assigns the audio port when the COMPONENT input port is selected. Off / Audio in1 / Audio in2 / Audio in3
Audio Source - S-Video	Assigns the audio port when the S-VIDEO input port is selected. Off / Audio in1 / Audio in2 / Audio in3
Audio Source - Video	Assigns the audio port when the VIDEO input port is selected. Off / Audio in1 / Audio in2 / Audio in3
Audio Source - Standby	Assigns the audio port in the standby mode. Off / Audio in1 / Audio in2 / Audio in3
HDMI Audio	Switches the mode for the HDMI audio. 1 / 2

[SCREEN] Tab

Function	General Description
Language	Switches the OSD (On Screen Display) language. English / French / German / Spanish / Italian / Norwegian / Dutch / Portuguese / Japanese / Simplified Chinese / Korean / Swedish / Russian / Finnish / Polish / Turkish / Traditional Chinese
Menu Position	Adjusts the menu position. [▲]: Increase the vertical menu position value. [▼]: Decrease the vertical menu position value. [◀]: Decrease the horizontal menu position value. [▶]: Increase the horizontal menu position value.
Blank	Switches the mode for the blank screen. MyScreen / Original / Blue / White / Black
Start Up	Switches the mode for the start-up screen. MyScreen / Original / Off
MyScreen Lock	Turns on/off the MyScreen lock function. On / Off
Message	Turns on/off the message function. On / Off
Template	Switches the mode for the template screen. Test Pattern / Dot-Line1 / Dot-Line2 / Dot-Line3 / Dot-Line4 / Circle 1 / Circle 2 / Map 1 / Map 2
C.C. – Display	Selects the Closed Caption Display setting. Auto / On / Off
C.C. – Mode	Selects the Closed Caption Mode setting. Captions / Text
C.C. – Channel	Selects the Closed Caption Channel setting. 1 / 2 / 3 / 4
Reset	Initialize the selected function. Menu Position V / Menu Position H [Execute]: After the confirmation message, the selected function will be initialized.

[OPTION] Tab

Function	General Description
Auto Search	Turns on/off the automatic signal search function. On / Off
Auto Keystone	Turns on/off the automatic keystone function. On / Off
Direct Power On	Turns on/off direct power on function. On / Off
Auto Power Off	Adjusts the time to count down to automatically turn the projector off. [-]: Decrease the auto power off time. [+]: Increase the auto power off time.
USB TYPE B	Selects the function of USB TYPE B port. Mouse / USB Display
My Button-1	Assigns the function for the MY BUTTON-1 button on the included remote control. Computer in1 / Computer in2 / LAN / USB TYPE A / USB TYPE B / HDMI / Component / S-Video / Video / Slideshow / My Image / Messenger / Information / Auto Keystone / My Memory / Active Iris / Picture Mode / Filter Reset / Template / AV Mute / Resolution / Mic Volume / Eco Mode / Other
My Button-2	Assigns the function for the MY BUTTON-2 button on the included remote control. Computer in1 / Computer in2 / LAN / USB TYPE A / USB TYPE B / HDMI / Component / S-Video / Video / Slideshow / My Image / Messenger / Information / Auto Keystone / My Memory / Active Iris / Picture Mode / Filter Reset / Template / AV Mute / Resolution / Mic Volume / Eco Mode / Other
My Source	Assigns the input port for the MY SOURCE/DOC.CAMERA button on the included remote control. Computer in1 / Computer in2 / LAN / USB TYPE A / USB TYPE B / HDMI / Component / S-Video / Video

Service

Function	General Description
Remote Freq. - Normal	Changes the projector's remote sensor off/on of the normal frequency. Disable / Enable
Remote Freq. - High	Changes the projector's remote sensor off/on of the high frequency. Disable / Enable



[OTHER] Tab

Function	General Description
Power	Turns on/off the power. Off / On
Input Source	Switches the input source. Computer in1 / Computer in2 / LAN / USB TYPE A / USB TYPE B / HDMI / Component / S-Video / Video
Picture Mode	Switches the picture mode. Normal / Cinema / Dynamic / Board(Black) / Board(Green) / Whiteboard / Daytime / Custom ➤ Custom is displayed only. It cannot be set.
Blank On/Off	Turns on/off the blank. Off / On
Mute	Turns on/off the mute. Off / On
Freeze	Turns on/off the freeze. On / Off
Magnify	Adjusts the magnify setting. [-]: Decrease the magnify value. [+]: Increase the magnify value.
Magnify Position	Adjusts the magnify position. [▲]: Decrease the vertical magnify position value. [▼]: Increase the vertical magnify position value. [◀]: Decrease the horizontal magnify position value. [▶]: Increase the horizontal magnify position value.
Template On/Off	Turns on/off the template screen. On / Off
My Image	Displays the My Image data. Image-Off / Image-1 / Image-2 / Image-3 / Image-4
My Image Delete	Deletes the My Image data. Image-1 / Image-2 / Image-3 / Image-4
Messenger	Displays the Messenger. Message-Off / Temporary / Message-1 / Message-2 / Message-3 / Message-4 / Message-5 / Message-6 / Message-7 / Message-8 / Message-9 / Message-10 / Message-11 / Message-12

## [STATUS] Tab

Function	General Description
Power	Displays the current power status. On / Standby / Cool down
Input Source	Displays the current Input source. Computer in1 / Computer in2 / LAN / USB type A / USB type B / HDMI / Component / S-Video / Video
Error Status	Displays the current error status. Normal / Cover Error / Fan Error / Lamp Error / Temp Error / Air Flow Error / Cold Error / Filter Error / Other Error
Blank On/Off	Displays the current blank on/off status. On / Off
Mute	Displays the current mute status. On / Off
Freeze	Displays the current freeze status. Normal / Freeze
Lamp Time	Displays the usage time for the current lamp.
Filter Time	Displays the usage time for the current filter.
Stack Mode	Displays the stack mode status. Main / Sub ➤ This item is not displayed when stack mode status is off.
Reset	Initialize the selected function. Lamp Time / Filter Time [Execute]: After the confirmation message, the selected function will be initialized.

## [PICTURE] Tab

Function	General Description
Brightness	Adjusts the brightness. [-]: Decrease the brightness value. [+]: Increase the brightness value.
Contrast	Adjusts the contrast. [-]: Decrease the contrast value. [+]: Increase the contrast value.
Gamma	Switches the gamma mode. Default-1 / Default-2 / Default-3 / Default-4 / Default-5 / Default-6 / Custom-1 / Custom-2 / Custom-3 / Custom-4 / Custom-5 / Custom-6
Color Temp	Switches the color temperature mode. High / Mid / Low / Hi-Bright-1 / Hi-Bright-2 / Hi-Bright-3 / Custom-1 / Custom-2 / Custom-3 / Custom-4 / Custom-5 / Custom-6
Color	Adjusts the strength of whole color. [-]: Decrease the color value. [+]: Increase the color value
Tint	Adjusts the tint. [-]: Decrease the tint value. [+]: Increase the tint value.
Sharpness	Adjusts the sharpness. [-]: Decrease the sharpness value. [+]: Increase the sharpness value.
Active Iris	Changes the active iris control mode. Presentation / Theater / Off
My Memory	Saves the current adjustment data into the memory. Save-1 / Save-2 / Save-3 / Save-4 Loads the data from the memory. Load-1 / Load-2 / Load-3 / Load-4 [Execute]: Performs each function.
Reset	Initialize the selected function. Brightness / Contrast / Color / Tint / Sharpness [Execute]: After the confirmation message, the selected function will be initialized.

## Gamma - Custom -

Function	General Description
Test Pattern	Changes the test pattern. Off / 9 steps Gray scale / 15 steps Gray scale / Ramp
Gamma Point 1	Adjusts the user gamma point 1. [-]: Decrease the user gamma point 1 value. [+]: Increase the user gamma point 1 value. [Reset]: Initialize the user gamma point 1 value.
Gamma Point 2	Adjusts the user gamma point 2. [-]: Decrease the user gamma point 2 value. [+]: Increase the user gamma point 2 value. [Reset]: Initialize the user gamma point 2 value.
Gamma Point 3	Adjusts the user gamma point 3. [-]: Decrease the user gamma point 3 value. [+]: Increase the user gamma point 3 value. [Reset]: Initialize the user gamma point 3 value.
Gamma Point 4	Adjusts the user gamma point 4. [-]: Decrease the user gamma point 4 value. [+]: Increase the user gamma point 4 value. [Reset]: Initialize the user gamma point 4 value.
Gamma Point 5	Setting the user gamma point 5. [-]: Decrease the user gamma point 5 value. [+]: Increase the user gamma point 5 value. [Reset]: Initialize the user gamma point 5 value.
Gamma Point 6	Setting the user gamma point 6. [-]: Decrease the user gamma point 6 value. [+]: Increase the user gamma point 6 value. [Reset]: Initialize the user gamma point 6 value.
Gamma Point 7	Setting the user gamma point 7. [-]: Decrease the user gamma point 7 value. [+]: Increase the user gamma point 7 value. [Reset]: Initialize the user gamma point 7 value.
Gamma Point 8	Setting the user gamma point 8. [-]: Decrease the user gamma point 8 value. [+]: Increase the user gamma point 8 value. [Reset]: Initialize the user gamma point 8 value.

## Color Temp - Custom -

Function	General Description
Test Pattern	Changes the test pattern. Off / 9 steps Gray scale / 15 steps Gray scale / Ramp
Color Temp Gain R	Adjusts the red color temperature gain. [-]: Decrease the red color temp gain value. [+]: Increase the red color temp gain value. [Reset]: Initialize the red color temp gain value.
Color Temp Gain G	Adjusts the green color temperature gain. [-]: Decrease the green color temp gain value. [+]: Increase the green color temp gain value. [Reset]: Initialize the green color temp gain value.
Color Temp Gain B	Adjusts the blue color temperature gain. [-]: Decrease the blue color temp gain value. [+]: Increase the blue color temp gain value. [Reset]: Initialize the blue color temp gain value.
Color Temp Offset R	Adjusts the red color temperature offset. [-]: Decrease the red color temp offset value. [+]: Increase the red color temp offset value. [Reset]: Initialize the red color temp offset value.
Color Temp Offset G	Adjusts the green color temperature offset. [-]: Decrease the green color temp offset value. [+]: Increase the green color temp offset value. [Reset]: Initialize the green color temp offset value.
Color Temp Offset B	Adjusts the blue color temperature offset. [-]: Decrease the blue color temp offset value. [+]: Increase the blue color temp offset value. [Reset]: Initialize the blue color temp offset value.

[IMAGE] Tab

Function	General Description
Aspect	Switches the mode for aspect ratio. Normal / 4:3 / 16:9 / 16:10 / 14:9
Over Scan	Adjusts the over-scan ratio. [-]: Decrease the over scan value. [+]: Increase the over scan value.
Position	Adjusts the display position. [▲]: Increase the vertical position value. [▼]: Decrease the vertical position value. [◀]: Increase the horizontal position value. [▶]: Decrease the horizontal position value.
H Phase	Adjusts the horizontal phase to eliminate flicker. [-]: Decrease the horizontal phase value. [+]: Increase the horizontal phase value.
H Size	Adjusts the horizontal size. [-]: Decrease the horizontal size value. [+]: Increase the horizontal size value.
Auto Adjust	[Execute]: Performs the automatic adjustment feature.
Reset	Initialize the selected function. Over Scan / V Position / H Position / H Size [Execute]: After the confirmation message, the selected function will be initialized.

[INPUT] Tab

Function	General Description
Progressive	Switches the progress mode. TV / Film / Off
Video NR	Switches the noise reduction mode. High / Mid / Low
Color Space	Switches the mode for color space. Auto / RGB / SMPTE240 / REC709 / REC601
Component	Switches the function of the COMPONENT port. Component / Scart RGB
Video Format - S-Video	Switches the mode for video format of the S-VIDEO port. Auto / NTSC / PAL / SECAM / NTSC4.43 / M-PAL / N-PAL
Video Format - Video	Switches the mode for video format of the VIDEO port. Auto / NTSC / PAL / SECAM / NTSC4.43 / M-PAL / N-PAL
HDMI Format	Switches the video format for an input from the HDMI port. Auto / Video / Computer
HDMI Range	Changes the digital range for an input from the HDMI port. Auto / Normal / Enhanced
Computer in - Computer in1	Selects the computer input signal type of the COMPUTER IN1 port. Auto / Sync On G Off
Computer in - Computer in2	Selects the computer input signal type of the COMPUTER IN2 port. Auto / Sync On G Off
Frame Lock - Computer in1	Selects the frame lock function on/off of the COMPUTER IN1 port. On / Off
Frame Lock - Computer in2	Selects the frame lock function on/off of the COMPUTER IN2 port. On / Off
Frame Lock - HDMI	Selects the frame lock function on/off of the HDMI port. On / Off

[SETUP] Tab

Function	General Description
Auto Keystone	[Execute]: Performs the automatic keystone distortion correction.
Keystone V	Corrects the vertical keystone distortion. [-]: Decrease the vertical keystone value. [+]: Increase the vertical keystone value.
Keystone H	Corrects the horizontal keystone distortion. [-]: Decrease the horizontal keystone value. [+]: Increase the horizontal keystone value.
Perfect Fit	[Settings...]: Displays the Perfect Fit dialog.
Auto Eco Mode	Turns on/off the auto eco mode. On / Off
Eco Mode	Turns off/on the eco mode. Normal / Eco
Mirror	Switches the mode for mirror status. Normal / H:Invert / V:Invert / H&V:Invert
Standby Mode	Switches the standby mode setting. Normal / Saving
Monitor Out - Computer in1	Assigns the MONITOR OUT when the COMPUTER IN1 input port is selected. Computer in1 / Off
Monitor Out - Computer in2	Assigns the MONITOR OUT when the COMPUTER IN2 input port is selected. Computer in2 / Off
Monitor Out - LAN	Assigns the MONITOR OUT when the LAN input port is selected. Computer in1 / Computer in2 / Off
Monitor Out - USB type A	Assigns the MONITOR OUT when the USB TYPE A input port is selected. Computer in1 / Computer in2 / Off
Monitor Out - USB type B	Assigns the MONITOR OUT when the USB TYPE B input port is selected. Computer in1 / Computer in2 / Off
Monitor Out - HDMI	Assigns the MONITOR OUT when the HDMI input port is selected. Computer in1 / Computer in2 / Off
Monitor Out - Component	Assigns the MONITOR OUT when the COMPONENT input port is selected. Computer in1 / Computer in2 / Off
Monitor Out - S-Video	Assigns the MONITOR OUT when the S-VIDEO input port is selected. Computer in1 / Computer in2 / Off
Monitor Out - Video	Assigns the MONITOR OUT when the VIDEO input port is selected. Computer in1 / Computer in2 / Off
Monitor Out - Standby	Assigns the MONITOR OUT in the standby mode. Computer in1 / Computer in2 / Off
Reset	Initialize the selected function. Keystone V / Keystone H [Execute]: After the confirmation message, the selected function will be initialized.

Perfect Fit

Function	General Description
Perfect Fit	Selects the perfect fit enable setting. Enable / Disable
Corner Position	
Left Top V	Adjusts the shape of the projected image in left top corner. [-]: Decrease the vertical value. [+]: Increase the vertical value.
Left Top H	Adjusts the shape of the projected image in left top corner. [-]: Decrease the horizontal value. [+]: Increase the horizontal value.
Left Bottom V	Adjusts the shape of the projected image in left bottom corner. [-]: Decrease the vertical value. [+]: Increase the vertical value.
Left Bottom H	Adjusts the shape of the projected image in left bottom corner. [-]: Decrease the horizontal value. [+]: Increase the horizontal value.
Right Top V	Adjusts the shape of the projected image in right top corner. [-]: Decrease the vertical value. [+]: Increase the vertical value.
Right Top H	Adjusts the shape of the projected image in right top corner. [-]: Decrease the horizontal value. [+]: Increase the horizontal value.
Right Bottom V	Adjusts the shape of the projected image in right bottom corner. [-]: Decrease the vertical value. [+]: Increase the vertical value.
Right Bottom H	Adjusts the shape of the projected image in right bottom corner. [-]: Decrease the horizontal value. [+]: Increase the horizontal value.
Line Distortion	
Left Distortion	Adjusts the shape of the projected image in left side distortion. [-]: Decrease the left side distortion value. [+]: Increase the left side distortion value.
Right Distortion	Adjusts the shape of the projected image in right side distortion. [-]: Decrease the right side distortion value. [+]: Increase the right side distortion value.
Distortion Position V	Adjusts the vertical distortion position. [-]: Decrease the vertical distortion position value. [+]: Increase the vertical distortion position value.
Top Distortion	Adjusts the shape of the projected image in top side distortion. [-]: Decrease the top side distortion value. [+]: Increase the top side distortion value.
Bottom Distortion	Adjusts the shape of the projected image in bottom side distortion. [-]: Decrease the bottom side distortion value. [+]: Increase the bottom side distortion value.
Distortion Position H	Adjusts the horizontal distortion position. [-]: Decrease the horizontal distortion position value. [+]: Increase the horizontal distortion position value.
Reset	After the confirmation message, the Perfect Fit function will be initialized.

[AUDIO] Tab

Function	General Description
Volume	Adjusts the volume. [-]: Decrease the volume value. [+]: Increase the volume value.
Speaker	Turns on/off the built-in speaker. On / Off
Mic Level	Switches the input level to match that of the microphone connected to the MIC port. High / Low
Mic Volume	Adjusts the volume of the microphone connected to the MIC port. [-]: Decrease the volume of the microphone. [+]: Increase the volume of the microphone.
Audio Source - Computer in1	Assigns the audio port when the COMPUTER IN1 input port is selected. Audio in1 / Audio in2 / Audio in3 / Off
Audio Source - Computer in2	Assigns the audio port when the COMPUTER IN2 input port is selected. Audio in1 / Audio in2 / Audio in3 / Off
Audio Source - LAN	Assigns the audio port when the LAN input port is selected. Audio in1 / Audio in2 / Audio in3 / Off
Audio Source - USB type A	Assigns the audio port when the USB TYPE A input port is selected. Audio in1 / Audio in2 / Audio in3 / Off
Audio Source - USB type B	Assigns the audio port when the USB TYPE B input port is selected. Audio in1 / Audio in2 / Audio in3 / Off
Audio Source - HDMI	Assigns the audio port when the HDMI input port is selected. Audio HDMI / Audio in1 / Audio in2 / Audio in3 / Off
Audio Source - Component	Assigns the audio port when the COMPONENT input port is selected. Audio in1 / Audio in2 / Audio in3 / Off
Audio Source - S-Video	Assigns the audio port when the S-VIDEO input port is selected. Audio in1 / Audio in2 / Audio in3 / Off
Audio Source - Video	Assigns the audio port when the VIDEO input port is selected. Audio in1 / Audio in2 / Audio in3 / Off
Audio Source - Standby	Assigns the audio port in the standby mode. Audio in1 / Audio in2 / Audio in3 / Off
HDMI Audio	Switches the mode for the HDMI audio. 1 / 2

[SCREEN] Tab

Function	General Description
Language	Switches the OSD (On Screen Display) language. English / French / German / Spanish / Italian / Norwegian / Dutch / Portuguese / Japanese / Simplified Chinese / Traditional Chinese / Korean / Swedish / Russian / Finnish / Polish / Turkish
Menu Position	Adjusts the menu position. [▲]: Increase the vertical menu position value. [▼]: Decrease the vertical menu position value. [◀]: Decrease the horizontal menu position value. [▶]: Increase the horizontal menu position value.
Blank	Switches the mode for the blank screen. MyScreen / Original / Blue / White / Black
Start Up	Switches the mode for the start-up screen. MyScreen / Original / Off
MyScreen Lock	Turns on/off the MyScreen lock function. On / Off
Message	Turns on/off the message function. On / Off
Template	Switches the mode for the template screen. Test Pattern / Dot-Line1 / Dot-Line2 / Dot-Line3 / Dot-Line4 / Circle 1 / Circle 2 / Map 1 / Map 2 / Stack
C.C. – Display	Selects the Closed Caption Display setting. Auto / On / Off
C.C. – Mode	Selects the Closed Caption Mode setting. Captions / Text
C.C. - Channel	Selects the Closed Caption Channel setting. 1 / 2 / 3 / 4
Reset	Initialize the selected function. Menu Position V / Menu Position H [Execute]: After the confirmation message, the selected function will be initialized.

[OPTION] Tab

Function	General Description
Auto Search	Turns on/off the automatic signal search function. On / Off
Auto Keystone	Turns on/Off the automatic keystone function. On / Off
Direct Power On	Turns on/off the Direct Power On function. On / Off
Auto Power Off	Adjusts the time to count down to automatically turn the projector off. [-]: Decrease the Auto Power off time. [+]: Increase the Auto Power off time.
USB type B	Selects the function of USB TYPE B port. Mouse / USB Display
My Button-1	Assigns the function for the MY BUTTON-1 button on the included remote control. Computer in1 / Computer in2 / LAN / USB type A / USB type B / HDMI / Component / S-Video / Video / Slideshow / My Image / Messenger / Information / Auto Keystone / My Memory / Active Iris / Picture Mode / Filter Reset / Template / AV Mute / Resolution / Mic Volume / Eco Mode / Other
My Button-2	Assigns the function for the MY BUTTON-2 button on the included remote control. Computer in1 / Computer in2 / LAN / USB type A / USB type B / HDMI / Component / S-Video / Video / Slideshow / My Image / Messenger / Information / Auto Keystone / My Memory / Active Iris / Picture Mode / Filter Reset / Template / AV Mute / Resolution / Mic Volume / Eco Mode / Other
My Source	Assigns the input port for the MY SOURCE/DOC.CAMERA button on the included remote control. Computer in1 / Computer in2 / LAN / USB type A / USB type B / HDMI / Component / S-Video / Video

Service

Function	General Description
Remote Freq. - Normal	Changes the projector's remote sensor on/off of the normal frequency. Enable / Disable
Remote Freq. - High	Changes the projector's remote sensor on/off of the high frequency. Enable / Disable

[OTHER] Tab

Function	General Description
Power	Turns on/off the power. On / Off
Input Source	Switches the input source. Computer in1 / Computer in2 / LAN / USB type A / USB type B / HDMI / Component / S-Video / Video
Picture Mode	Switches the picture mode. Normal / Cinema / Dynamic / Board(Black) / Board(Green) / Whiteboard / Daytime / Custom ➤ Custom is displayed only. It cannot be set.
Blank On/Off	Turns on/off the blank. On / Off
Mute	Turns on/off the mute. On / Off
Freeze	Turns off/on the freeze. Normal / Freeze
Magnify	Adjusts the magnify setting. [-]: Decrease the magnify value. [+]: Increase the magnify value.
Magnify Position	Adjusts the magnify position. [▲]: Decrease the vertical magnify position value. [▼]: Increase the vertical magnify position value. [◀]: Decrease the horizontal magnify position value. [▶]: Increase the horizontal magnify position value.
Template	Turns on/off the template screen. On / Off
My Image	Displays the My Image data. Image-Off / Image-1 / Image-2 / Image-3 / Image-4
My Image Delete	Deletes the My Image data. Image-1 / Image-2 / Image-3 / Image-4
Messenger	Displays the Messenger. Message-Off / Temporary / Message-1 / Message-2 / Message-3 / Message-4 / Message-5 / Message-6 / Message-7 / Message-8 / Message-9 / Message-10 / Message-11 / Message-12



## [STATUS] Tab

Function	General Description
Power	Displays the current power status. On / Standby / Cool down
Input Source	Displays the current Input source. Computer in1 / Computer in2 / LAN / USB type A / USB type B / HDMI / S-Video / Video
Error Status	Displays the current error status. Normal / Cover Error / Fan Error / Lamp Error / Temp Error / Air Flow Error / Cold Error / Filter Error / Other Error
Blank On/Off	Displays the current blank on/off status. On / Off
Mute	Displays the current mute status. On / Off
Freeze	Displays the current freeze status. Normal / Freeze
Lamp Time	Displays the usage time for the current lamp.
Filter Time	Displays the usage time for the current filter.
Reset	Initialize the selected function. Lamp Time / Filter Time [Execute]: After the confirmation message, the selected function will be initialized.

## [PICTURE] Tab

Function	General Description
Brightness	Adjusts the brightness. [-]: Decrease the brightness value. [+]: Increase the brightness value.
Contrast	Adjusts the contrast. [-]: Decrease the contrast value. [+]: Increase the contrast value.
Gamma	Switches the gamma mode. Default-1 / Default-2 / Default-3 / Default-4 / Default-5 / Default-6 / Custom-1 / Custom-2 / Custom-3 / Custom-4 / Custom-5 / Custom-6
Color Temp	Switches the color temperature mode. High / Mid / Low / Hi-Bright-1 / Hi-Bright-2 / Hi-Bright-3 / Custom-1 / Custom-2 / Custom-3 / Custom-4 / Custom-5 / Custom-6
Color	Adjusts the strength of whole color. [-]: Decrease the color value. [+]: Increase the color value
Tint	Adjusts the tint. [-]: Decrease the tint value. [+]: Increase the tint value.
Sharpness	Adjusts the sharpness. [-]: Decrease the sharpness value. [+]: Increase the sharpness value.
My Memory	Saves the current adjustment data into the memory. Save-1 / Save-2 / Save-3 / Save-4 Loads the data from the memory. Load-1 / Load-2 / Load-3 / Load-4 [Execute]: Performs each function.
Reset	Initialize the selected function. Brightness / Contrast / Color / Tint / Sharpness [Execute]: After the confirmation message, the selected function will be initialized.

## Gamma - Custom -

Function	General Description
Test Pattern	Changes the test pattern. Off / 9 steps Gray scale / 15 steps Gray scale / Ramp
Gamma Point 1	Adjusts the user gamma point 1. [-]: Decrease the user gamma point 1 value. [+]: Increase the user gamma point 1 value. [Reset]: Initialize the user gamma point 1 value.
Gamma Point 2	Adjusts the user gamma point 2. [-]: Decrease the user gamma point 2 value. [+]: Increase the user gamma point 2 value. [Reset]: Initialize the user gamma point 2 value.
Gamma Point 3	Adjusts the user gamma point 3. [-]: Decrease the user gamma point 3 value. [+]: Increase the user gamma point 3 value. [Reset]: Initialize the user gamma point 3 value.
Gamma Point 4	Adjusts the user gamma point 4. [-]: Decrease the user gamma point 4 value. [+]: Increase the user gamma point 4 value. [Reset]: Initialize the user gamma point 4 value.
Gamma Point 5	Adjusts the user gamma point 5. [-]: Decrease the user gamma point 5 value. [+]: Increase the user gamma point 5 value. [Reset]: Initialize the user gamma point 5 value.
Gamma Point 6	Adjusts the user gamma point 6. [-]: Decrease the user gamma point 6 value. [+]: Increase the user gamma point 6 value. [Reset]: Initialize the user gamma point 6 value.
Gamma Point 7	Adjusts the user gamma point 7. [-]: Decrease the user gamma point 7 value. [+]: Increase the user gamma point 7 value. [Reset]: Initialize the user gamma point 7 value.
Gamma Point 8	Adjusts the user gamma point 8. [-]: Decrease the user gamma point 8 value. [+]: Increase the user gamma point 8 value. [Reset]: Initialize the user gamma point 8 value.

## Color Temp - Custom -

Function	General Description
Test Pattern	Changes the test pattern. Off / 9 steps Gray scale / 15 steps Gray scale / Ramp
Color Temp Gain R	Adjusts the red color temperature gain. [-]: Decrease the red color temperature gain value. [+]: Increase the red color temperature gain value. [Reset]: Initialize the red color temperature gain value.
Color Temp Gain G	Adjusts the green color temperature gain. [-]: Decrease the green temperature temp gain value. [+]: Increase the green color temperature gain value. [Reset]: Initialize the green color temperature gain value.
Color Temp Gain B	Adjusts the blue color temperature gain. [-]: Decrease the blue color temperature gain value. [+]: Increase the blue color temperature gain value. [Reset]: Initialize the blue color temperature gain value.
Color Temp Offset R	Adjusts the red color temperature offset. [-]: Decrease the red color temperature offset value. [+]: Increase the red color temperature offset value. [Reset]: Initialize the red color temperature offset value.
Color Temp Offset G	Adjusts the green color temperature offset. [-]: Decrease the green color temperature offset value. [+]: Increase the green color temperature offset value. [Reset]: Initialize the green color temperature offset value.
Color Temp Offset B	Adjusts the blue color temperature offset. [-]: Decrease the blue color temperature offset value. [+]: Increase the blue color temperature offset value. [Reset]: Initialize the blue color temperature offset value.

[IMAGE] Tab

Function	General Description
Aspect	Switches the mode for aspect ratio. Normal / 4:3 / 16:9 / 16:10 / 14:9
Over Scan	Adjusts the over-scan ratio. [-]: Decrease the over scan value. [+]: Increase the over scan value.
Position	Adjusts the display position. [▲]: Increase the vertical position value. [▼]: Decrease the vertical position value. [◀]: Increase the horizontal position value. [▶]: Decrease the horizontal position value.
H Phase	Adjusts the horizontal phase to eliminate flicker. [-]: Decrease the horizontal phase value. [+]: Increase the horizontal phase value.
H Size	Adjusts the horizontal size. [-]: Decrease the horizontal size value. [+]: Increase the horizontal size value.
Auto Adjust	[Execute]: Performs the automatic adjustment feature.
Reset	Initialize the selected function. Over Scan / V Position / H Position / H Size [Execute]: After the confirmation message, the selected function will be initialized.

[INPUT] Tab

Function	General Description
Progressive	Switches the progress mode. TV / Film / Off
Video NR	Switches the noise reduction mode. High / Mid / Low
Color Space	Switches the mode for color space. Auto / RGB / SMPTE240 / REC709 / REC601
Video Format - S-Video	Switches the mode for video format of the S-VIDEO port. Auto / NTSC / PAL / SECAM / NTSC4.43 / M-PAL / N-PAL
Video Format - Video	Switches the mode for video format of the VIDEO port. Auto / NTSC / PAL / SECAM / NTSC4.43 / M-PAL / N-PAL
HDMI Format	Switches the video format for an input from the HDMI port. Auto / Video / Computer
HDMI Range	Changes the digital range for an input from the HDMI port. Auto / Normal / Enhanced
Computer in - Computer in1	Selects the computer input signal type of the COMPUTER IN1 port. Auto / Sync On G Off
Computer in - Computer in2	Selects the computer input signal type of the COMPUTER IN2 port. Auto / Sync On G Off
Frame Lock - Computer in1	Selects the frame lock function on/off of the COMPUTER IN1 port. On / Off
Frame Lock - Computer in2	Selects the frame lock function on/off of the COMPUTER IN2 port. On / Off
Frame Lock - HDMI	Selects the frame lock function on/off of the HDMI port. On / Off

[SETUP] Tab

Function	General Description
Auto Keystone	[Execute]: Performs the automatic keystone distortion correction.
Keystone V	Corrects the vertical keystone distortion. [-]: Decrease the vertical keystone value. [+]: Increase the vertical keystone value.
Auto Eco Mode	Turns on/off the auto eco mode. On / Off
Eco Mode	Switches the eco mode. Normal / Eco / Intelligent Eco
Installation	Switches the mode for installation status. Front/Desktop / Rear/Desktop / Rear/Ceiling / Front/Ceiling
Standby Mode	Switches the standby mode setting. Normal / Saving
Monitor Out - Computer in1	Assigns the MONITOR OUT when the COMPUTER IN1 input port is selected. Computer in1 / Off
Monitor Out - Computer in2	Assigns the MONITOR OUT when the COMPUTER IN2 input port is selected. Computer in2 / Off
Monitor Out - LAN	Assigns the MONITOR OUT when the LAN input port is selected. Computer in1 / Computer in2 / Off
Monitor Out - USB type A	Assigns the MONITOR OUT when the USB TYPE A input port is selected. Computer in1 / Computer in2 / Off
Monitor Out - USB type B	Assigns the MONITOR OUT when the USB TYPE B input port is selected. Computer in1 / Computer in2 / Off
Monitor Out - HDMI	Assigns the MONITOR OUT when the HDMI input port is selected. Computer in1 / Computer in2 / Off
Monitor Out - S-Video	Assigns the MONITOR OUT when the S-VIDEO input port is selected. Computer in1 / Computer in2 / Off
Monitor Out - Video	Assigns the MONITOR OUT when the VIDEO input port is selected. Computer in1 / Computer in2 / Off
Monitor Out - Standby	Assigns the MONITOR OUT in the standby mode. Computer in1 / Computer in2 / Off
Reset	Initialize the selected function. Keystone V [Execute]: After the confirmation message, the selected function will be initialized.

[AUDIO] Tab

Function	General Description
Volume	Adjusts the volume. [-]: Decrease the volume value. [+]: Increase the volume value.
Speaker	Turns on/off the built-in speaker. On / Off
Audio Source - Computer in1	Assigns the audio port when the COMPUTER IN1 input port is selected. Audio in1 / Audio in2 / Off
Audio Source - Computer in2	Assigns the audio port when the COMPUTER IN2 input port is selected. Audio in1 / Audio in2 / Off
Audio Source - LAN	Assigns the audio port when the LAN input port is selected. LAN / Audio in1 / Audio in2 / Off
Audio Source - USB type A	Assigns the audio port when the USB TYPE A input port is selected. Audio in1 / Audio in2 / Off
Audio Source - USB type B	Assigns the audio port when the USB TYPE B input port is selected. USB type B / Audio in1 / Audio in2 / Off
Audio Source - HDMI	Assigns the audio port when the HDMI input port is selected. Audio HDMI / Audio in1 / Audio in2 / Off
Audio Source - S-Video	Assigns the audio port when the S-VIDEO input port is selected. Audio in1 / Audio in2 / Off
Audio Source - Video	Assigns the audio port when the VIDEO input port is selected. Audio in1 / Audio in2 / Off
Audio Source - Standby	Assigns the audio port in the standby mode. Audio in1 / Audio in2 / Off
HDMI Audio	Switches the mode for the HDMI audio. 1 / 2

[SCREEN] Tab

Function	General Description
Language	Switches the OSD (On Screen Display) language. English / French / German / Spanish / Italian / Norwegian / Dutch / Portuguese / Japanese / Simplified Chinese / Traditional Chinese / Korean / Swedish / Russian / Finnish / Polish / Turkish
Menu Position	Adjusts the menu position. [▲]: Increase the vertical menu position value. [▼]: Decrease the vertical menu position value. [◀]: Decrease the horizontal menu position value. [▶]: Increase the horizontal menu position value.
Blank	Switches the mode for the blank screen. MyScreen / Original / Blue / White / Black
Start Up	Switches the mode for the start-up screen. MyScreen / Original / Off
MyScreen Lock	Turns on/off the MyScreen lock function. On / Off
Message	Turns on/off the message function. On / Off
Template	Switches the mode for the template screen. Test Pattern / Dot-Line1 / Dot-Line2 / Dot-Line3 / Dot-Line4 / Circle 1 / Circle 2 / Map 1 / Map 2
C.C. - Display	Selects the Closed Caption Display setting. Auto / On / Off
C.C. - Mode	Selects the Closed Caption Mode setting. Captions / Text
C.C. - Channel	Selects the Closed Caption Channel setting. 1 / 2 / 3 / 4
Reset	Initialize the selected function. Menu Position V / Menu Position H [Execute]: After the confirmation message, the selected function will be initialized.

[OPTION] Tab

Function	General Description
Auto Search	Turns on/off the automatic signal search function. On / Off
Auto Keystone	Turns on/Off the automatic keystone function. On / Off
Direct Power On	Turns on/off the Direct Power On function. On / Off
Auto Power Off	Adjusts the time to count down to automatically turn the projector off. [-]: Decrease the auto power off time. [+]: Increase the auto power off time.
USB type B	Selects the function of USB TYPE B port. Mouse / USB Display
My Button-1	Assigns the function for the MY BUTTON-1 button on the included remote control. Computer in1 / Computer in2 / LAN / USB type A / USB type B / HDMI / S-Video / Video / Slideshow / My Image / Messenger / Information / Auto Keystone / My Memory / Picture Mode / Filter Reset / Template / AV Mute / Resolution / Eco Mode / Other
My Button-2	Assigns the function for the MY BUTTON-2 button on the included remote control. Computer in1 / Computer in2 / LAN / USB type A / USB type B / HDMI / S-Video / Video / Slideshow / My Image / Messenger / Information / Auto Keystone / My Memory / Picture Mode / Filter Reset / Template / AV Mute / Resolution / Eco Mode / Other
My Button-Eco	Assigns the function for the MY BUTTON-Eco button on the included remote control. Computer in1 / Computer in2 / LAN / USB type A / USB type B / HDMI / S-Video / Video / Slideshow / My Image / Messenger / Information / Auto Keystone / My Memory / Picture Mode / Filter Reset / Template / AV Mute / Resolution / Eco Mode / Blank / Freeze / Volume / Auto
My Source	Assigns the input port for the MY SOURCE/DOC.CAMERA button on the included remote control. Computer in1 / Computer in2 / LAN / USB type A / USB type B / HDMI / S-Video / Video

[OTHER] Tab

Function	General Description
Power	Turns on/off the power. On / Off
Input Source	Switches the input source. Computer in1 / Computer in2 / LAN / USB type A / USB type B / HDMI / S-Video / Video
Picture Mode	Switches the picture mode. Normal / Cinema / Dynamic / Board(Black) / Board(Green) / Whiteboard / Daytime / Custom ➤ Custom is displayed only. It cannot be set.
Blank On/Off	Turns on/off the blank. On / Off
Mute	Turns on/off the mute. On / Off
Freeze	Turns off/on the freeze. Normal / Freeze
Magnify	Adjusts the magnify setting. [-]: Decrease the magnify value. [+]: Increase the magnify value.
Magnify Position	Adjusts the magnify position. [▲]: Decrease the vertical magnify position value. [▼]: Increase the vertical magnify position value. [◀]: Decrease the horizontal magnify position value. [▶]: Increase the horizontal magnify position value.
Template	Turns on/off the template screen. On / Off
My Image	Displays the My Image data. Image-Off / Image-1 / Image-2 / Image-3 / Image-4
My Image Delete	Deletes the My Image data. Image-1 / Image-2 / Image-3 / Image-4
Messenger	Displays the Messenger. Message-Off / Temporary / Message-1 / Message-2 / Message-3 / Message-4 / Message-5 / Message-6 / Message-7 / Message-8 / Message-9 / Message-10 / Message-11 / Message-12

## [STATUS] Tab

Function	General Description
Power	Displays the current power status. On / Standby / Cool down
Input Source	Displays the current Input source. Computer in1 / Computer in2 / LAN / USB type A / USB type B / HDMI / S-Video / Video
Error Status	Displays the current error status. Normal / Cover Error / Fan Error / Lamp Error / Temp Error / Air Flow Error / Cold Error / Filter Error / Other Error
Blank On/Off	Displays the current blank on/off status. On / Off
Mute	Displays the current mute status. On / Off
Freeze	Displays the current freeze status. Normal / Freeze
Lamp Time	Displays the usage time for the current lamp.
Filter Time	Displays the usage time for the current filter.
Reset	Initialize the selected function. Lamp Time / Filter Time [Execute]: After the confirmation message, the selected function will be initialized.

## [PICTURE] Tab

Function	General Description
Brightness	Adjusts the brightness. [-]: Decrease the brightness value. [+]: Increase the brightness value.
Contrast	Adjusts the contrast. [-]: Decrease the contrast value. [+]: Increase the contrast value.
Gamma	Switches the gamma mode. Default-1 / Default-2 / Default-3 / Default-4 / Default-5 / Default-6 / Default-7 / Custom-1 / Custom-2 / Custom-3 / Custom-4 / Custom-5 / Custom-6 / Custom-7
Color Temp	Switches the color temperature mode. High / Mid / Low / Hi-Bright-1 / Hi-Bright-2 / Hi-Bright-3 / Hi-Bright-4 / Custom-1 / Custom-2 / Custom-3 / Custom-4 / Custom-5 / Custom-6 / Custom-7
Color	Adjusts the strength of whole color. [-]: Decrease the color value. [+]: Increase the color value
Tint	Adjusts the tint. [-]: Decrease the tint value. [+]: Increase the tint value.
Sharpness	Adjusts the sharpness. [-]: Decrease the sharpness value. [+]: Increase the sharpness value.
Active Iris	Changes the active iris control mode. Presentation / Theater / Off
My Memory	Saves the current adjustment data. Save-1 / Save-2 / Save-3 / Save-4 Loads the data from the memory. Load-1 / Load-2 / Load-3 / Load-4 [Execute]: Performs each function.
Reset	Initialize the selected function. Brightness / Contrast / Color / Tint / Sharpness [Execute]: After the confirmation message, the selected function will be initialized.

[Custom - Gamma -]

Function	General Description
User Gamma Pattern	Changes the test pattern. Off / 9 steps Gray scale / 15 steps Gray scale / Ramp
User Gamma Point 1	Adjusts the gamma point 1. [-]: Decrease the gamma point 1 value. [+]: Increase the gamma point 1 value. [Reset]: Initialize the gamma point 1 value.
User Gamma Point 2	Adjusts the gamma point 2. [-]: Decrease the gamma point 2 value. [+]: Increase the gamma point 2 value. [Reset]: Initialize the gamma point 2 value.
User Gamma Point 3	Adjusts the gamma point 3. [-]: Decrease the gamma point 3 value. [+]: Increase the gamma point 3 value. [Reset]: Initialize the gamma point 3 value.
User Gamma Point 4	Adjusts the gamma point 4. [-]: Decrease the gamma point 4 value. [+]: Increase the gamma point 4 value. [Reset]: Initialize the gamma point 4 value.
User Gamma Point 5	Adjusts the gamma point 5. [-]: Decrease the gamma point 5 value. [+]: Increase the gamma point 5 value. [Reset]: Initialize the gamma point 5 value.
User Gamma Point 6	Adjusts the gamma point 6. [-]: Decrease the gamma point 6 value. [+]: Increase the gamma point 6 value. [Reset]: Initialize the gamma point 6 value.
User Gamma Point 7	Adjusts the gamma point 7. [-]: Decrease the gamma point 7 value. [+]: Increase the gamma point 7 value. [Reset]: Initialize the gamma point 7 value.
User Gamma Point 8	Adjusts the gamma point 8. [-]: Decrease the gamma point 8 value. [+]: Increase the gamma point 8 value. [Reset]: Initialize the gamma point 8 value.

[Custom - Color Temp -]

Function	General Description
User Gamma Pattern	Changes the test pattern. Off / 9 steps Gray scale / 15 steps Gray scale / Ramp
Color Temp Gain R	Adjusts the color temperature gain R. [-]: Decrease the color temp gain R value. [+]: Increase the color temp gain R value. [Reset]: Initialize the color temp gain R value.
Color Temp Gain G	Adjusts the color temperature gain G. [-]: Decrease the color temp gain G value. [+]: Increase the color temp gain G value. [Reset]: Initialize the color temp gain G value.
Color Temp Gain B	Adjusts the color temperature gain B. [-]: Decrease the color temp gain B value. [+]: Increase the color temp gain B value. [Reset]: Initialize the color temp gain B value.
Color Temp Offset R	Adjusts the color temperature offset R. [-]: Decrease the color temp offset R value. [+]: Increase the color temp offset R value. [Reset]: Initialize the color temp offset R value.
Color Temp Offset G	Adjusts the color temperature offset G. [-]: Decrease the color temp offset G value. [+]: Increase the color temp offset G value. [Reset]: Initialize the color temp offset G value.
Color Temp Offset B	Adjusts the color temperature offset B. [-]: Decrease the color temp offset B value. [+]: Increase the color temp offset B value. [Reset]: Initialize the color temp offset B value.



[IMAGE] Tab

Function	General Description
Aspect	Switches the mode for aspect ratio. <b>CL72X / CL73X / NE7 / PL93X / X31i / X36i / X46i</b> Normal / 4:3 / 16:9 / 16:10 / 14:9 <b>CL73W / WX36i</b> Normal / 4:3 / 16:9 / 16:10 / 14:9 / Native
Over Scan	Adjusts the over-scan ratio. [-]: Decrease the over scan value. [+]: Increase the over scan value.
Position	Adjusts the display position. [▲]: Increase the vertical position value. [▼]: Decrease the vertical position value. [◀]: Increase the horizontal position value. [▶]: Decrease the horizontal position value.
H Phase	Adjusts the horizontal phase to eliminate flicker. [-]: Decrease the horizontal phase value. [+]: Increase the horizontal phase value.
H Size	Adjusts the horizontal size. [-]: Decrease the horizontal size value. [+]: Increase the horizontal size value.
Auto Adjust	[Execute]: Performs the automatic adjustment feature.
Reset	Initialize the selected function. Over Scan / V Position / H Position / H Size [Execute]: After the confirmation message, the selected function will be initialized.

[INPUT] Tab

Function	General Description
Progressive	Switches the progress mode. TV / Film / Off
Video NR	Switches the noise reduction mode. High / Mid / Low
Color Space	Switches the mode for color space. Auto / RGB / SMPTE240 / REC709 / REC601
Video Format - S-Video	Switches the mode for video format of the S-VIDEO port. Auto / NTSC / PAL / SECAM / NTSC4.43 / M-PAL / N-PAL
Video Format - Video	Switches the mode for video format of the VIDEO port. Auto / NTSC / PAL / SECAM / NTSC4.43 / M-PAL / N-PAL
HDMI Format	Switches the video format for an input from the HDMI port. Auto / Video / Computer
HDMI Range	Changes the digital range for an input from the HDMI port. Auto / Normal / Enhanced
Computer in - Computer in1	Selects the computer input signal type of the COMPUTER IN1 port. Auto / Sync On G Off
Computer in - Computer in2	Selects the computer input signal type of the COMPUTER IN2 port. Auto / Sync On G Off
Frame Lock - Computer in1	Selects the frame lock function on/off of the COMPUTER IN1 port. On / Off
Frame Lock - Computer in2	Selects the frame lock function on/off of the COMPUTER IN2 port. On / Off
Frame Lock - HDMI	Selects the frame lock function on/off of the HDMI port. On / Off

[SETUP] Tab

Function	General Description
Auto Keystone	[Execute]: Performs the automatic keystone distortion correction.
Keystone V	Corrects the vertical keystone distortion. [-]: Decrease the vertical keystone value. [+]: Increase the vertical keystone value.
Auto Eco Mode	Turns on/off the auto eco mode. On / Off
Eco Mode	Turns off/on the eco mode. Normal / Eco / Intelligent Eco / Saver
Installation	Switches the mode for mirror status. Front/Desktop / Rear/Desktop / Rear/Ceiling / Front/Ceiling
Standby Mode	Switches the standby mode setting. Normal / Saving
Monitor Out - Computer in1	Assigns the MONITOR OUT when the COMPUTER IN1 input port is selected. Computer in1 / Off
Monitor Out - Computer in2	Assigns the MONITOR OUT when the COMPUTER IN2 input port is selected. Computer in2 / Off
Monitor Out - LAN	Assigns the MONITOR OUT when the LAN input port is selected. Computer in1 / Computer in2 / Off
Monitor Out - USB type A	Assigns the MONITOR OUT when the USB TYPE A input port is selected. Computer in1 / Computer in2 / Off
Monitor Out - USB type B	Assigns the MONITOR OUT when the USB TYPE B input port is selected. Computer in1 / Computer in2 / Off
Monitor Out - HDMI	Assigns the MONITOR OUT when the HDMI input port is selected. Computer in1 / Computer in2 / Off
Monitor Out - S-Video	Assigns the MONITOR OUT when the S-VIDEO input port is selected. Computer in1 / Computer in2 / Off
Monitor Out - Video	Assigns the MONITOR OUT when the VIDEO input port is selected. Computer in1 / Computer in2 / Off
Monitor Out - Standby	Assigns the MONITOR OUT in the standby mode. Computer in1 / Computer in2 / Off
Reset	Initialize the selected function. Keystone V [Execute]: After the confirmation message, the selected function will be initialized.

[AUDIO] Tab

Function	General Description
Volume	Adjusts the Volume. [-]: Decrease the volume. [+]: Increase the volume.
Speaker	Turns on/off the built-in speaker. On / Off
Audio Source - Computer in1	Assigns the AUDIO SOURCE when the COMPUTER IN1 input port is selected. Audio in1 / Audio in2 / Audio in3 / Off
Audio Source - Computer in2	Assigns the AUDIO SOURCE when the COMPUTER IN2 input port is selected. Audio in1 / Audio in2 / Audio in3 / Off
Audio Source - LAN	Assigns the AUDIO SOURCE when the LAN input port is selected. LAN / Audio in1 / Audio in2 / Audio in3 / Off
Audio Source - USB type A	Assigns the AUDIO SOURCE when the USB TYPE A input port is selected. USB type A / Audio in1 / Audio in2 / Audio in3 / Off
Audio Source - USB type B	Assigns the AUDIO SOURCE when the USB TYPE B input port is selected. USB type B / Audio in1 / Audio in2 / Audio in3 / Off
Audio Source - HDMI	Assigns the AUDIO SOURCE when the HDMI input port is selected. HDMI / Audio in1 / Audio in2 / Audio in3 / Off
Audio Source - S-Video	Assigns the AUDIO SOURCE when the S-VIDEO input port is selected. Audio in1 / Audio in2 / Audio in3 / Off
Audio Source - Video	Assigns the AUDIO SOURCE when the VIDEO input port is selected. Audio in1 / Audio in2 / Audio in3 / Off
Audio Source - Standby	Assigns the AUDIO SOURCE in the standby mode. Audio in1 / Audio in2 / Audio in3 / Off
Mic Level	Switches the input level to match that of the microphone connected to the MIC port. High / Low
Mic Volume	Adjusts the volume of the microphone connected to the MIC port. [-]: Decrease the volume of the microphone. [+]: Increase the volume of the microphone.

[SCREEN] Tab

Function	General Description
Language	Switches the OSD language. English / French / German / Spanish / Italian / Norwegian / Dutch / Portuguese / Japanese / Simplified Chinese / Traditional Chinese / Korean / Swedish / Russian / Finnish / Polish / Turkish / Danish / Czech / Hungarian / Romanian / Slovenian / Croatian / Greek / Lithuanian / Estonian / Latvian / Thai / Arabian / Persian / Portuguese -Brazil
Menu Position	Adjusts the menu position. [▲]: Increase the vertical menu position. [▼]: Decrease the vertical menu position. [◀]: Decrease the horizontal menu position. [▶]: Increase the horizontal menu position.
Blank	Switches the mode for the blank screen. MyScreen / Original / Blue / White / Black
Start Up	Switches the mode for the start-up screen. MyScreen / Original / Off
MyScreen Lock	Turns on/off the MyScreen lock function. On / Off
Message	Turns on/off the message function. On / Off
Template	Switches the mode for the template screen. Test Pattern / Dot-Line1 / Dot-Line2 / Dot-Line3 / Dot-Line4 / Circle 1 / Circle 2 / Map 1 / Map 2
C.C. - Display	Selects the Closed Caption Display setting. Auto / On / Off
C.C. - Mode	Selects the Closed Caption Mode setting. Captions / Text
C.C. - Channel	Selects the Closed Caption Channel setting. 1 / 2 / 3 / 4
Reset	Initialize the selected function. Menu Position V / Menu Position H [Execute]: After the confirmation message, the selected function will be initialized.

[OPTION] Tab

Function	General Description
Auto Search	Turns on/off the automatic signal search function. On / Off
Auto Keystone	Turns on/Off the automatic keystone function. On / Off
Direct Power On	Turns on/off the Direct Power On function. On / Off
Auto Power Off	Adjusts the time to count down to automatically turn the projector off. [-]: Decrease the Auto Power off time. [+]: Increase the Auto Power off time.
USB type B	Selects the function of USB TYPE B port. Mouse / USB Display
My Button-1	Assigns the function for the MY BUTTON-1 button on the included remote control. Computer in1 / Computer in2 / LAN / USB type A / USB type B / HDMI / S-Video / Video / Slideshow / My Image / Messenger / Information / Auto Keystone / My Memory / Active Iris / Picture Mode / Filter Reset / Template / AV Mute / Resolution / Mic Volume / Eco Mode / Saver Mode / Other
My Button-2	Assigns the function for the MY BUTTON-2 button on the included remote control. Computer in1 / Computer in2 / LAN / USB type A / USB type B / HDMI / S-Video / Video / Slideshow / My Image / Messenger / Information / Auto Keystone / My Memory / Active Iris / Picture Mode / Filter Reset / Template / AV Mute / Resolution / Mic Volume / Eco Mode / Saver Mode / Other
My Source	Assigns the input port for the MY SOURCE/DOC.CAMERA button on the included remote control. Computer in1 / Computer in2 / LAN / USB type A / USB type B / HDMI / S-Video / Video

[Service]

Function	General Description
Remote Freq. - Normal	Changes the projector's remote sensor on/off of the normal frequency. Enable / Disable
Remote Freq. - High	Changes the projector's remote sensor on/off of the high frequency. Enable / Disable

[OTHER] Tab

Function	General Description
Power	Turns on/off the power. On / Off
Input Source	Switches the input source. Computer in1 / Computer in2 / LAN / USB type A / USB type B / HDMI / S-Video / Video
Picture Mode	Switches the picture mode. Normal / Cinema / Dynamic / Board(Black) / Board(Green) / Whiteboard / Daytime / Photo / Custom ➤ Custom is displayed only. It cannot be set.
Blank On/Off	Turns on/off the blank. On / Off
Mute	Turns on/off the mute. On / Off
Freeze	Turns off/on the freeze. Normal / Freeze
Magnify	Adjusts the magnify setting. [-]: Decrease the magnify value. [+]: Increase the magnify value.
Magnify Position	Adjusts the magnify position. [▲]: Decrease the vertical magnify position. [▼]: Increase the vertical magnify position. [◀]: Decrease the horizontal magnify position. [▶]: Increase the horizontal magnify position.
Template On/Off	Turns on/off the template screen. On / Off
My Image	Displays the My Image data. Off / Image-1 / Image-2 / Image-3 / Image-4
My Image Delete	Deletes the My Image data. Image-1 / Image-2 / Image-3 / Image-4
Messenger	Displays the Messenger. Off / Temporary / Message-1 / Message-2 / Message-3 / Message-4 / Message-5 / Message-6 / Message-7 / Message-8 / Message-9 / Message-10 / Message-11 / Message-12

### 3.9 Image Send to Projector

If the projector supports My Image (e-SHOT) feature, you can select My Image (e-SHOT) function. Click [Image Send] icon, the window [Send Image File to projector(s)] will be appeared.

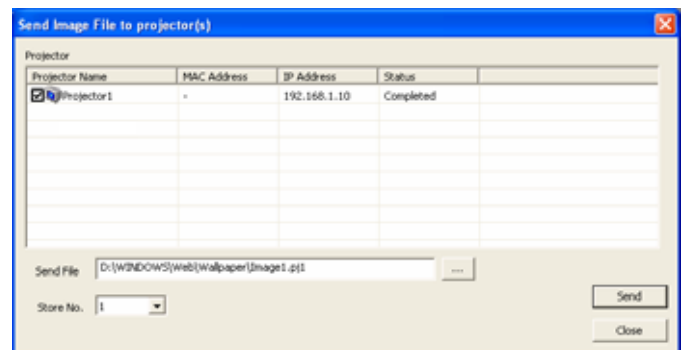
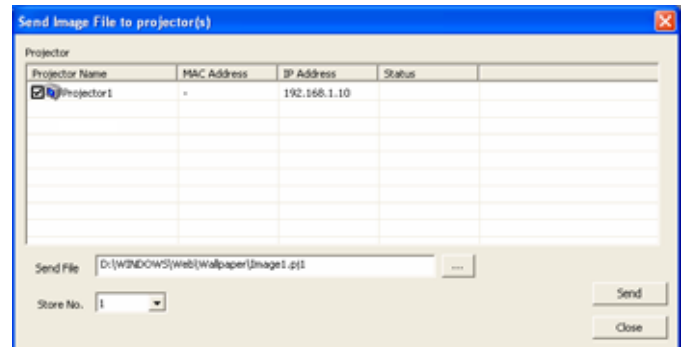
### 3.10 MY IMAGE (e-SHOT)

Mark projectors that you will transfer an image. Select the image file that should be transferred and stored number. The compatible image file is only PJ1 format file that can be created by Projector Image Tool (PJImg). And then, click the Send button to transfer image.

The progress bar is shown during transfer. The status will change "OK" if it succeeds.

[Note]

- This feature is only available for CL33X, CL35X, CL67N, CL69N, CL72X, CL73W, CL73X, CL86X, NE7, PL90X, PL92X, PL93X, WX36, WX36i, X21i, X26i, X30N, X31, X31i, X35N, X35NK, X36, X36i, X46, X46i, X56, X90 and X90K.
- Please verify the port setting on the projector and the port / authentication setting on the application.



Once you select the image file and store location number, the "Send" button becomes available. The compatible image file is only PJ1 format file that can be created by Projector Image Tool (PJImg). And then, click the Send button to transfer image. The maximum size of transferred file is depending on the model. Please check the following list.

PJ1 format file

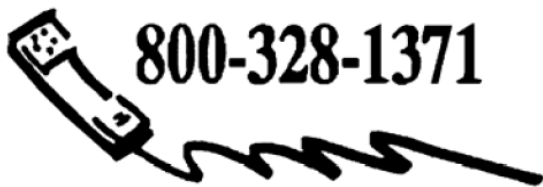
**CL33X / CL35X / CL67N / CL69N / CL72X / CL73W / CL73X / CL86X / NE7 / PL90X / PL92X / PL93X / WX36 / WX36i / X21i / X26i / X30N / X31 / X31i / X35N / X35NK / X36 / X36i / X46 / X46i / X56 / X90 / X90K**  
Less than equal 130,816byte

JPEG file

**CL33X / CL35X / CL67N / CL69N / CL72X / CL73W / CL73X / CL86X / NE7 / PL92X / PL93X / WX36 / WX36i / X21i / X26i / X31 / X31i / X36 / X36i / X46 / X46i / X56**  
Less than equal 262,144byte

### 3.11 Software Version

You can check the software version information to click "About" icon, or choose "About Projector Control Application" on the menu.



**800-328-1371**



**<http://www.3M.com/meetings>  
[meetings@mmm.com](mailto:meetings@mmm.com)**

## Free Manuals Download Website

<http://myh66.com>

<http://usermanuals.us>

<http://www.somanuals.com>

<http://www.4manuals.cc>

<http://www.manual-lib.com>

<http://www.404manual.com>

<http://www.luxmanual.com>

<http://aubethermostatmanual.com>

Golf course search by state

<http://golfingnear.com>

Email search by domain

<http://emailbydomain.com>

Auto manuals search

<http://auto.somanuals.com>

TV manuals search

<http://tv.somanuals.com>