



EST. 1987  
**A4TECH**

# **User Manual**

Model: G7-630

[www.a4tech.com](http://www.a4tech.com)

**THIS DEVICE COMPLIES WITH PART 15 OF THE FCC RULES. OPERATION IS SUBJECT TO THE FOLLOWING TWO CONDITIONS: (1) THIS DEVICE MAY NOT CAUSE HARMFUL INTERFERENCE AND (2) THIS DEVICE MUST ACCEPT ANY INTERFERENCE RECEIVED, INCLUDING INTERFERENCE THAT MAY CAUSE UNDESIRE OPERATION.**

**Federal Communications Commission Requirements**

The equipment has been tested and found to comply with the limits for Class B Digital Device, pursuant to part 15 of the FCC Rules. These limits are designed to provide reasonable protection against harmful interference in a residential installation. This equipment generates uses and can radiate radio frequency energy and, if not installed and used in accordance with the instruction, may cause harmful interference to radio communication. However, there is no guarantee that interference will not occur in a particular installation. If this equipment does cause harmful interference to radio or television reception, which can be determined by turning the equipment off and on, the user is encouraged to try to correct the interference by one or more of the following measures:

- Reorient or relocate the receiving antenna.
- Increase the separation between the equipment and receiver.
- Connect the equipment into an outlet on a circuit different from that to which the receiver is connected.
- Consult the dealer or an experienced radio/TV technician for help.

**THE CHANGES OR MODIFICATIONS NOT EXPRESSLY APPROVED BY THE PARTY RESPONSIBLE FOR COMPLIANCE COULD VOID THE USER'S AUTHORITY TO OPERATE THE EQUIPMENT.**





This device complies with Part 15 of the FCC Rules. Operation is subject to the following two conditions:

- (1) This device may not cause harmful interference, and
- (2) This device must accept any interference received, including interference that may cause undesired operation.


**FCC Radiation Exposure Statement**

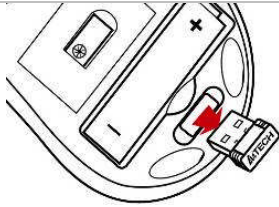
The equipment complies with FCC radiation exposure limits set forth for uncontrolled equipment and meets the FCC radio frequency (RF) Exposure Guidelines in Supplement C to OET65. The equipment has very low levels of RF energy that it is deemed to comply without testing of specific absorption ratio (SAR).

## Knowing the Product

<p><b>Far Range Up to 15 Meters</b> X-Far Wireless range ensures more operation freedom. (Note: Actual operating distance may vary and depend on working environments)</p>	
<p><b>3 Shiftable Report Rates for power saving, Ensures No Lag Response</b> Instantly shifts mouse report rate between 8/4/2 ms for power saving and delivers smooth, accurate cursor control.</p>	
<p><b>8 Gestures in Right Button</b> The mouse allows you get 8 functions on "Right" button.</p>	
<p><b>Battery Status Indicator</b> Aware of the battery power anytime with A4 Tech's uniquely designed "8 in Right" software</p>	 <p><b>Battery Status Indicator</b></p>

## Hardware Installation

<p>1. Pull out the Nano-Receiver from the bottom of mouse.</p>	<p>2. Plug Nano-receiver into USB port of your computer or notebook.</p> 
--	--

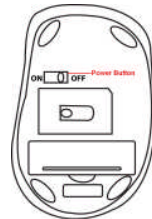


3. Insert the supplied battery, make sure that the positive (+) and negative (-) ends of the battery match the polarity indicators inside the battery housing.

## Power Management of the Mouse



1. To power on the mouse, switch the power button to "ON" position.
2. To turn off the mouse power, switch the power button to "OFF" position.



Note: The mouse can be awaked easily by moving the mouse randomly if long time no using.

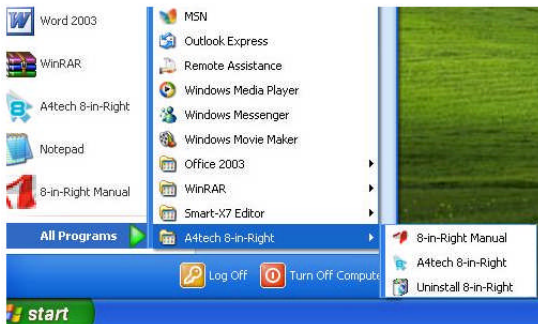


The wireless mouse is plug-and-play. No driver is required. If you would like to get more function, please download software in our website: [www.a4tech.com](http://www.a4tech.com).

## Software Installation

1. Before installing the mouse software, please uninstall any previous installed mouse software.
2. Extract the ZIP file to your local disk and double click  to start installation.
3. Follow on-screen instructions to complete the installation.
4. The icon  will appear on your desktop, then you have successfully installed the software.

5. To launch the software, double click the icon  on your desktop or go to Start—Programs—A4tech **8 in Right**, then the icon will appear in the taskbar at the right corner of your screen. 



## Software Instructions

### A. How to get 8 functions in right button of the mouse

From the “task pull-down” menu of each arrow direction, you can select “keyboard, mouse, office sets, key combinations, multimedia and internet” 6 main function categories and there are more than 30 different functions that are ready for your immediate selection.



Task Pull-down Menu

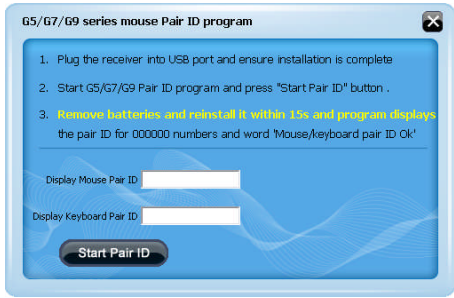
## B. How to Pair the X-Far Wireless Devices

The G5/G7/G9 mouse series have been preset the ID Code in the factory. But under the circumstances you lose receiver or want to use with the other receiver in the same product series, you need to refresh the ID Code before using it.

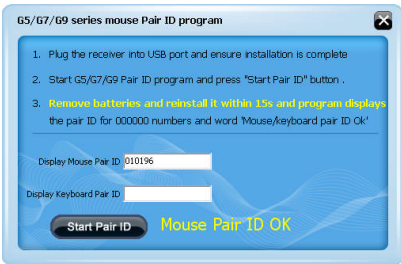
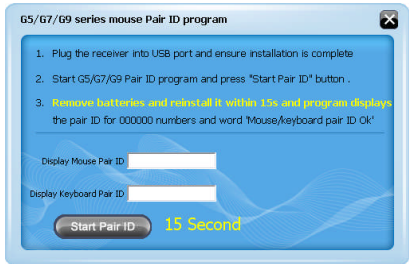
**Step 1:** Right click on the icon  in the taskbar  and select "Pair ID Program"



**Step 2:** Press "Start Pair ID" to refresh ID Code.



**Step 3:** Remove the mouse batteries and insert again in 15 seconds , 6 digits of matching code will be displayed on the menu as shown "Mouse Pair ID OK".



## C. How to Indicate Battery Status




All of G7 series have Battery status

Indicator in the software, click "Battery Indicator" in the main menu of the software, then the battery power status will be displayed on the screen. It is convenient that you can easily be aware when the battery power is low and change battery in time.

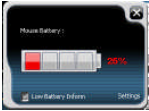


### Smart Mouse Battery Low Warning

Remind you to replace the battery right away when Figure. A will pop up in the right corner of your screen

Mouse Battery Low Warning	Mouse Working Voltage	Display	
100%	1.2V and Above		
75%	1.12~1.19V		

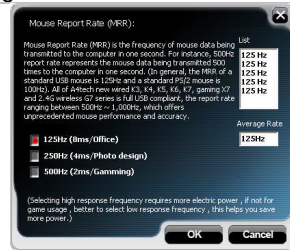


25%	1.0~1.05 V			
-----	---------------	---	--	--

## D. Three Shiftable Report Rates

There are 3 report rates can be preset for high sensitive response time of 2/4/8 milliseconds, it improves cursor delay and jumping problems of wireless mouse, saves power in working and increases accuracy playing the games.

Mouse Report Rate	Response Time	Suitable Range
500Hz	2ms	Game
250Hz	4ms	Photo design
125Hz	8ms	Office



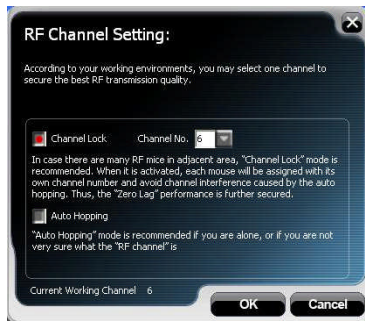
## F. Set RF Channel to Avoid Wireless Interference

In case there are many wireless mice working in the adjacent area, you may set a specific channel so as to avoid wireless interference, hence ensures better wireless communication quality.

**Step 1:** Right click on the icon  in the taskbar  and select "RF Channel Setting"



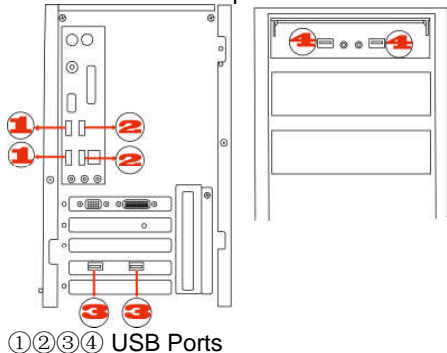
**Step 2:** Tick "Channel Lock" and distribute each mouse a different channel.



## Notice:

To ensure that your mouse and keyboard send and receive perfectly, please read below instructions for your reference:

1. Interference from iron panel of PC.



①②③④ USB Ports

2. Use USB extension wire to position the Nano-receiver at a far location to prevent

To get optimal performance, please plug the Nano-receiver into ③、④ to avoid shielding wireless signal when placing at ①、②.

electromagnetism interference from devices which don't pass safety standard.

3. Avoid using the wireless mouse on a metal surface. Metals such as iron, aluminum, or copper shield the radio frequency transmission and slow down the mouse's response time or cause the mouse to fail temporarily.

The radio frequency is 2.4HZ, it is safe for our bodies, but please be cautious in using cardiac pacemaker or other body auxiliary instruments.

## Troubleshooting

If the mouse is not working:

1. Make sure the mouse is on.
2. Check battery and battery installation.
3. Check receiver installation.
4. Try another USB port.

## Product Support

Need help with technical support? Please go to:

<http://www.a4tech.com/ennew/support.asp> and our support team will respond within 72 hours.

\*\*Features and specifications of all A4 TECH products are subject to change without notification.

## Specification

<b>RF Data Transmit Rate</b>	<b>500k bps</b>	<b>Frequency</b>	<b>2.407GHz ~2.473GHz</b>
<b>Modulation Type</b>	<b>GFSK</b>	<b>ID Codes</b>	<b>524,288 sets</b>

## Free Manuals Download Website

<http://myh66.com>

<http://usermanuals.us>

<http://www.somanuals.com>

<http://www.4manuals.cc>

<http://www.manual-lib.com>

<http://www.404manual.com>

<http://www.luxmanual.com>

<http://aubethermostatmanual.com>

Golf course search by state

<http://golfingnear.com>

Email search by domain

<http://emailbydomain.com>

Auto manuals search

<http://auto.somanuals.com>

TV manuals search

<http://tv.somanuals.com>