

ASUS[®]

Vintage-PH1

Barebone System

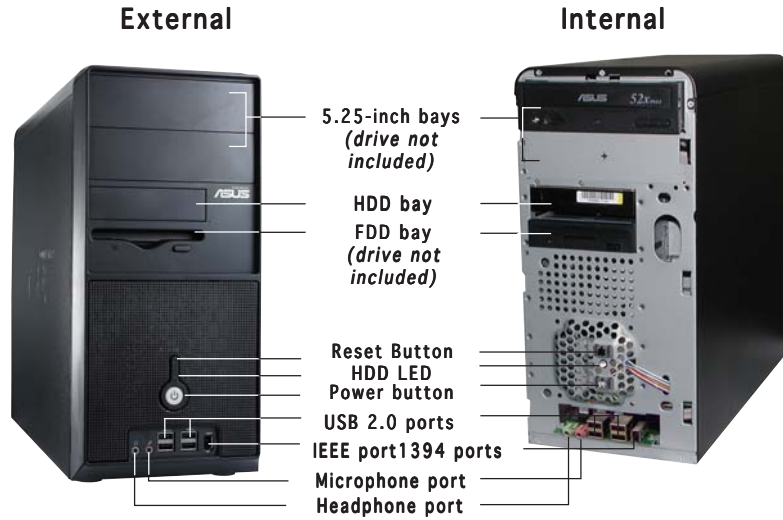
Quick Start Guide



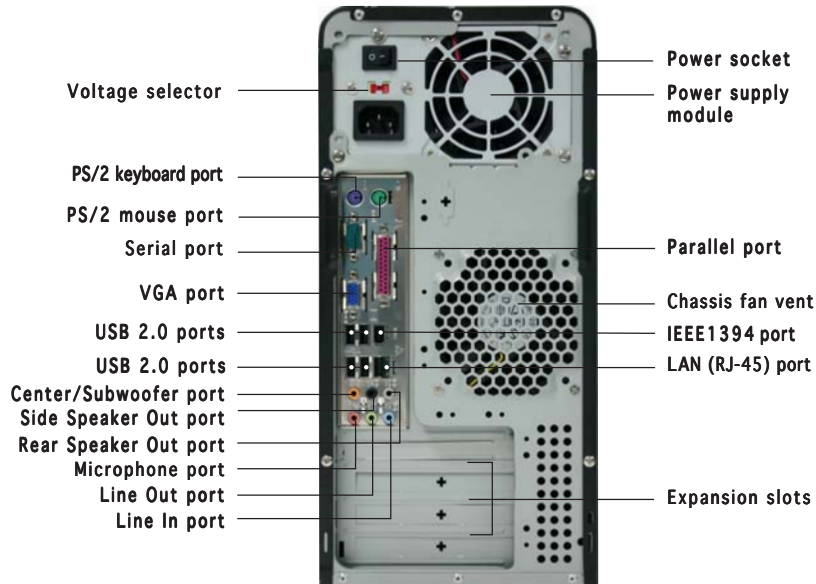
Front panel features



NOTE. The photos in this guide are for reference only. For detailed information on your system's specifications, refer to the user guide.



Rear panel features



Voltage selector

The switching power supply that came with the system has a voltage selector switch below the power socket. Use this switch to select the appropriate voltage according to the voltage supply in your area.

If the voltage supply in your area is 100-127V, set the switch to 115V.

If the voltage supply in your area is 200-240V, set the switch to 230V.



115V/230V
Voltage selector



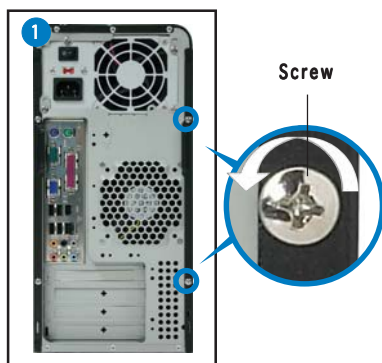
CAUTION. Setting the switch to 115V in a 230V environment will seriously damage the system!

Internal components



1. PFC power supply
2. Motherboard
3. Two 5.25" optical drive bays
4. 3.5" HDD drive bay
5. 3.5" Floppy drive bay
6. Hard disk drive bays

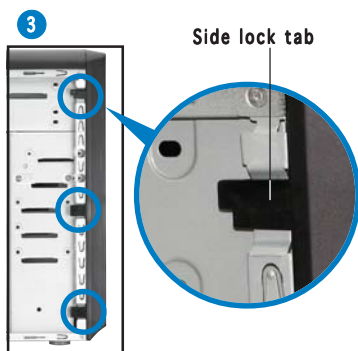
Removing the side plate and front cover



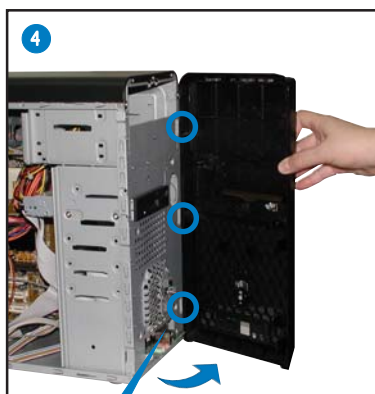
Remove the two screws on the rear panel.



IMPORTANT. Repeat steps 1 and 2 to remove the other side plate.



Release the side lock tabs.



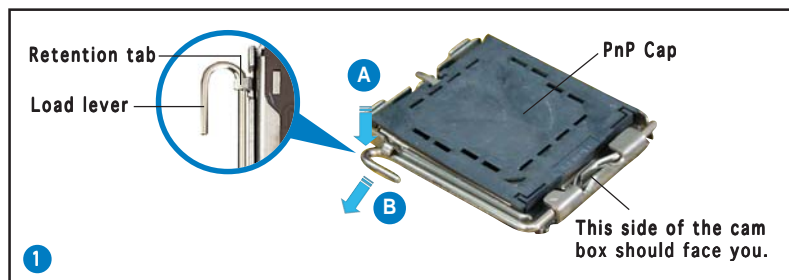
Hinge-like tab

Swing the left edge of the front panel outward, then unhook the hinge-like tabs from the holes on the right side of the front panel.

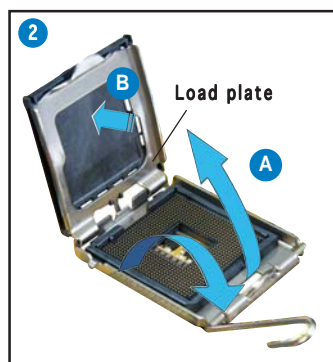
Installing a CPU



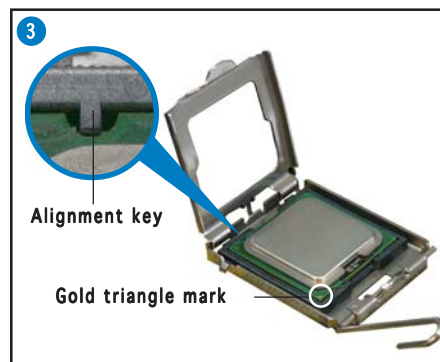
CAUTION. Incorrect installation of the CPU into the socket may bend the pins and severely damage the CPU!



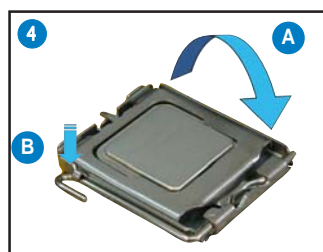
Press the load lever with your thumb (A) and move it to the left (B) until it is released from the retention tab.



Lift the load lever in the direction of the arrow to a 135° angle. Lift the load plate with your thumb and forefinger to a 100° angle (A), then push the PnP cap from the load plate window to remove (B).

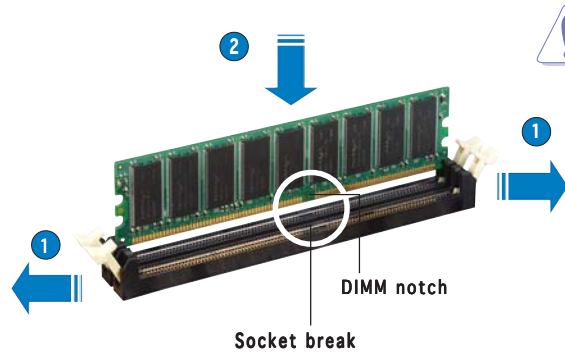


Position the CPU over the socket, making sure that the gold triangle is on the bottom-left corner of the socket. The socket alignment key should fit into the CPU notch.



Close the load plate (A), then push the load lever (B) until it snaps into the retention tab.

Installing system memory

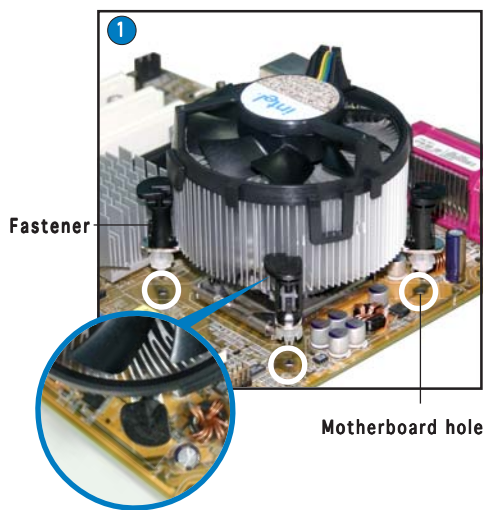


CAUTION. A DDR DIMM is keyed with a notch so that it fits in only one direction. DO NOT force a DIMM into a socket to avoid damaging the DIMM.

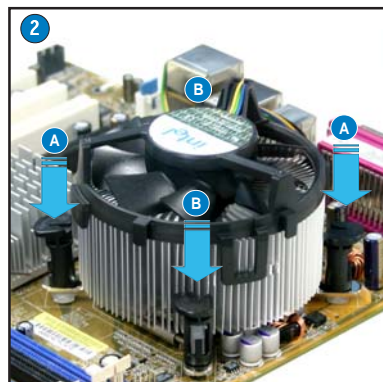
Installing the fan and heatsink assembly



NOTE. Your boxed Intel® Pentium® 4 processor package should come with installation instructions for the CPU, heatsink, and the retention mechanism. If the instructions in this section do not match the CPU documentation, follow the latter.



Place the heatsink on top of the installed CPU, making sure that the four fasteners match the holes on the motherboard.

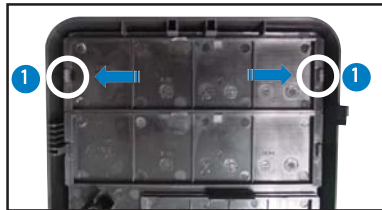


Push down two fasteners at a time in a diagonal sequence to secure the heatsink and fan assembly in place.

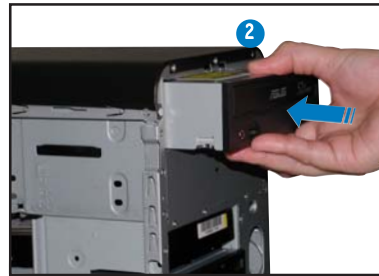


IMPORTANT. Do not forget to connect the CPU fan connector! Hardware monitoring errors can occur if you fail to plug this connector.

Installing an optical drive

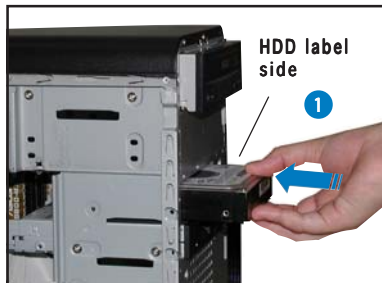


Remove the drive bay plate.



Audio cable
IDE ribbon cable
Red stripe to pin 1
Power cable

Installing a hard disk drive



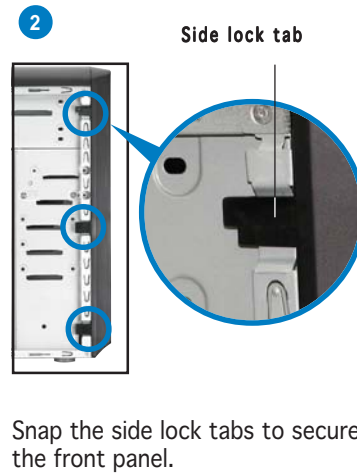
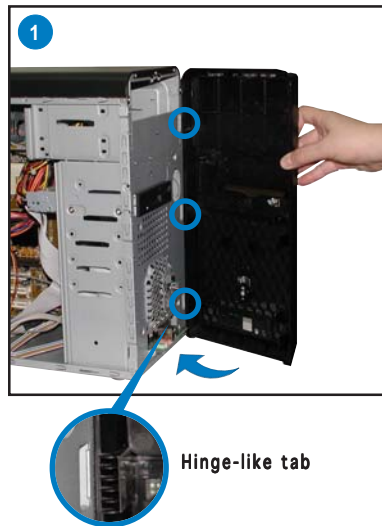
Primary IDE connector



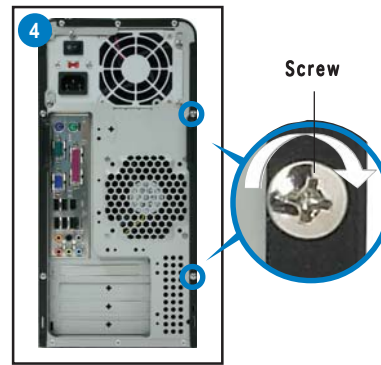
IDE ribbon cable
Power cable

Connect the blue interface of the IDE ribbon cable to the primary IDE connector (blue connector labeled PRI_IDE1) on the motherboard.

Replacing the side plate and front cover



Replace the side plate.



Drive in two screws on the rear panel.



IMPORTANT. Repeat steps 3 and 4 to replace the other side plate.

Free Manuals Download Website

<http://myh66.com>

<http://usermanuals.us>

<http://www.somanuals.com>

<http://www.4manuals.cc>

<http://www.manual-lib.com>

<http://www.404manual.com>

<http://www.luxmanual.com>

<http://aubethermostatmanual.com>

Golf course search by state

<http://golfingnear.com>

Email search by domain

<http://emailbydomain.com>

Auto manuals search

<http://auto.somanuals.com>

TV manuals search

<http://tv.somanuals.com>