

**BELKIN®**

# Share

WIRELESS MODEM-ROUTER

## **User Manual**

F7D3402au 8820au00394

## TABLE OF CONTENTS

What's in the Box . . . . .	1
Initial Setup . . . . .	1
Advanced Tools & Settings . . . . .	6
The Belkin Router Manager . . . . .	7
Manual Setup Using Your Browser . . . . .	8
Adding Computers to Your Network . . . . .	9
Adding USB Devices . . . . .	11
Bundled Software . . . . .	14
Additional Capabilities . . . . .	15
<b>Getting to Know Your Router . . . . .</b>	<b>16</b>
Front Panel . . . . .	16
Back Panel . . . . .	17
<b>Technical Details . . . . .</b>	<b>18</b>
Technical Features . . . . .	18
System Requirements . . . . .	19
<b>Troubleshooting, Support, and Warranty . . . . .</b>	<b>20</b>
Troubleshooting . . . . .	20
Technical Support . . . . .	28
Belkin International, Inc., Limited 3-Year Product Warranty . . . . .	29
<b>Regulatory Information . . . . .</b>	<b>32</b>
FCC Statement . . . . .	32

## GETTING STARTED

---

### What's in the Box

Share Wireless Modem-Router

ADSL cable (attached to router)

Power supply (attached to router)

Network information card (attached to router)

Belkin Setup CD with User Manual

### Initial Setup

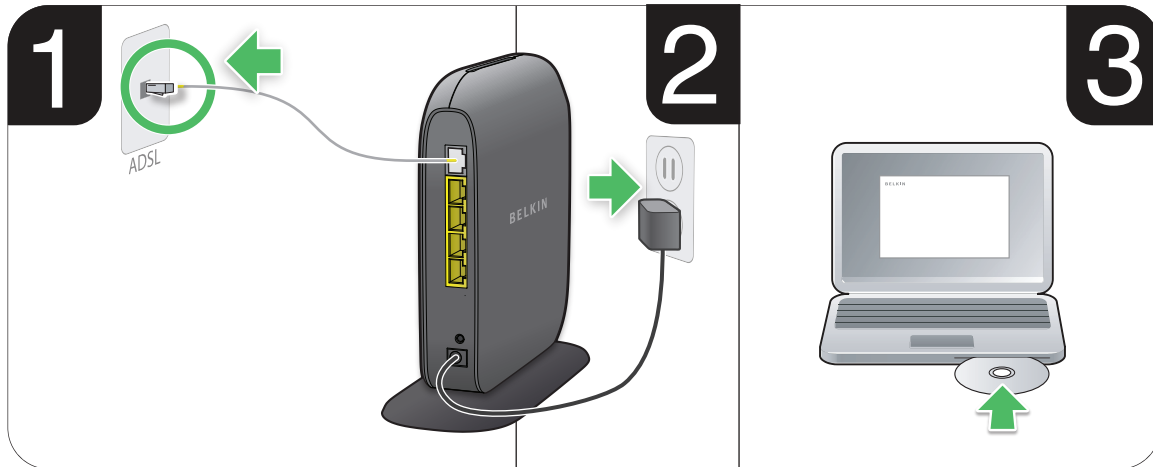
#### Where to Place Your Router

For the best results, place the Router in an open location away from large metal objects and magnets such as those found in speakers. Raising the Router above floor level can improve the strength of your wireless signal.

## GETTING STARTED

---

### How to Set It Up



## GETTING STARTED

---

1. Connect your Router's ADSL cable to your ADSL connection.  
If you are replacing an existing Router or gateway, this may require unplugging the existing gateway.

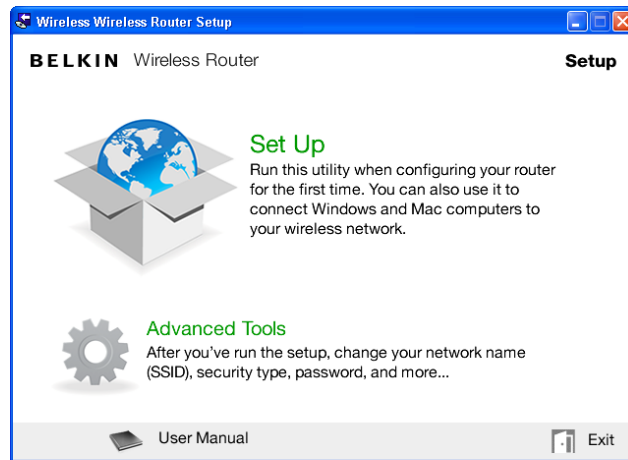
**Note:** If a telephone is connected to the same telephone jack then an ADSL Splitter/Filter is required. This can be purchased from your local retailer.

If you have telephones on the same telephone line then an ADSL filter is required which can be purchased from your local retailer.

2. Plug the Router's power supply into a wall outlet.
3. Put the CD into your computer. If the CD doesn't open automatically, please browse to your CD drive and double-click on the Belkin Setup CD icon.



Setup



4. Click the Setup icon on the CD menu.

## GETTING STARTED

---

**BELKIN** Wireless Router

**BELKIN.**  
www.belkin.com

Network Name (SSID)

Password

Security Type **WPA/WPA2**

Help

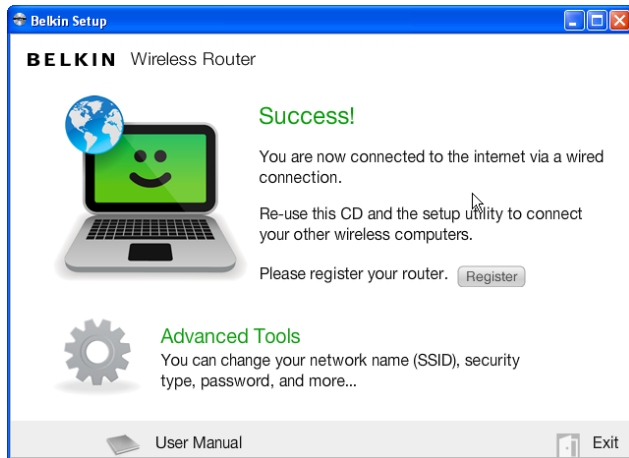
Using the card from the side of your router, enter the Network Name (SSID) and password exactly as they appear on the card.

Network Name (SSID):

Password:

Cancel Next

5. After a brief installation, the setup software will ask you for the network name and password from the network information card that is attached to your Router. Store the card under the base of your Router for future reference.



6. A progress screen will appear while additional software is installed. This may take a few minutes to complete. Once finished, a "Success" message will appear indicating that you are connected to the Internet via your new Belkin Router.

### During setup you may be asked for additional information.

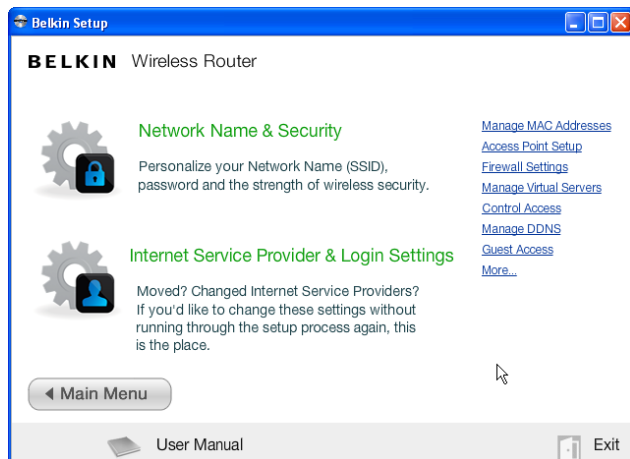
You may need to enter a username and password provided by your ISP. This username and password is likely to be found on materials that came from your ISP when you signed up for service. If necessary, you may need to contact your ISP to retrieve your username and password.

If you have a static IP address, you may need to enter additional information also provided by your ISP.

If your computer doesn't have a wireless adapter, or the setup software is unable to control it, you may be asked to connect your computer to the Router with a network cable.

If the setup software is unable to detect your VCI and VPI settings based on your country, you may also need to enter this information. Your ISP is likely to have provided it.

### Advanced Tools & Settings



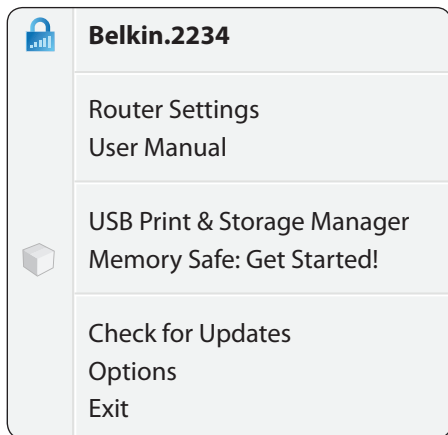
After the initial setup is complete, you have the option to change settings like your network name, security type, and password. To make these changes and others, click on the Advanced Tools icon at the CD Setup menu and select one of the following settings that you would like to change:

**Network Name & Security** – Personalize your network name (SSID), password, and strength of wireless security.

**Internet Service Provider & Login Settings** – Have you moved or changed Internet Service Providers? If you'd like to change these settings without running through the setup process again, this is the place.



### The Belkin Router Manager



The Belkin Router Manager appears in your system tray (Windows) or menu bar (Mac). Its icon indicates the current status of your Router and also allows you to access your Router's settings to make changes. It also provides quick access to software that came bundled with your Router.

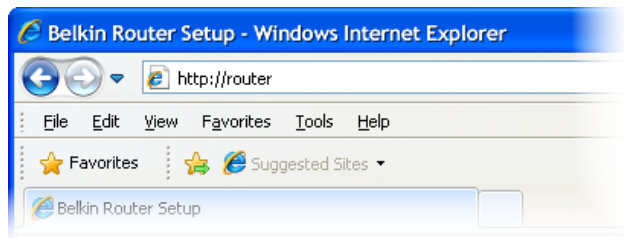
To access the Router settings, click on the icon and select from the menu that appears.

The status of your Router is shown by the Belkin Router Manager icon, which closely mimics the light on the front of the Router.

**Green:** You are connected to your Belkin Router and it is connected to the Internet.

**Amber:** You are connected to your Belkin Router, but it is not connected to the Internet.

### Manual Setup Using Your Browser



In your browser, type "http://router" (you do not need to type in anything else such as "www"). Then press the Enter key. If you're still having trouble running the manual setup option, type "192.168.2.1" in your browser (you do not need to type in anything else such as "http://" or "www"). Then press the Enter key.

### Adding Computers to Your Network

Wireless devices such as computers, network printers, and gaming systems can connect to your Router with a few simple steps.

#### Using the CD

1. Put the Setup CD into your computer. If the CD doesn't open automatically, browse to your CD drive and open the Belkin Setup CD icon.
2. Click the Setup icon on the CD menu.
3. After a brief installation, the setup software will ask you for the network name and password from the network information card that came with your Router. This card is most likely now located underneath the foot of your Router in the provided card slot.
4. A progress screen will appear while additional software is installed. This may take a few minutes to complete. Once finished, a "Success" message will appear indicating that you are connected to the Internet via your new Belkin Router.

**Note:** The setup software runs only on Windows and Mac OS X systems.

### Manually

If you choose not to use the included Setup CD for adding additional computers or wireless devices, you can manually add these items to your network.

1. Locate the wireless-network-connections option on your computer or wireless device.
2. Select your Belkin Router from the list of available networks. You can identify your Belkin Router by locating the network name (SSID) from the card located underneath the foot of your Router.
3. Enter your network password (located on your network information card).

Your wireless device will take a few moments to connect to your network. If the connection is not made the first time, try this process again. If you still have difficulty connecting to your network after trying this process a few times, see the "Troubleshooting" section in this manual for help with connecting to your network.

**Note:** In some cases you may be prompted to select the security type. It is printed on the card for your convenience.

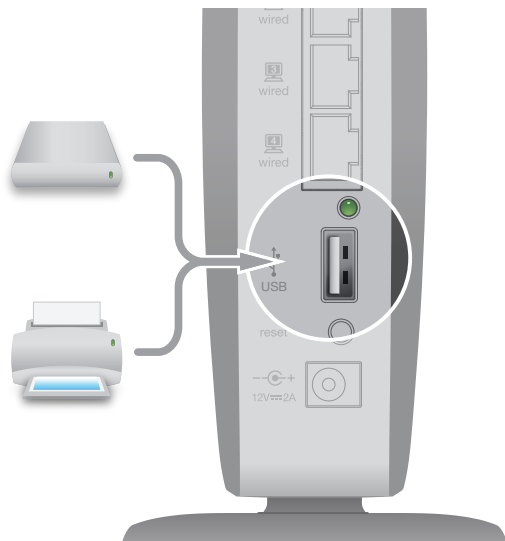
### Using the WPS Button

1. Start WPS Push Button Connection (WPS PBC) on your computer or other Wi-Fi device that you would like to connect wirelessly to your Router. Often there will be a button for this purpose in software that came with the device, or a physical "WPS," "PBC," or "Security" button on the device itself.
2. Within two minutes, press the WPS button on your Router.

The WPS light (small light above WPS button) will blink green while it listens for your Wi-Fi device. Once a connection is established, the light will turn green and then go out. If a connection is not established, the light will blink amber. You may repeat the process to try again.

You can repeat this process for each WPS-enabled device you'd like to add to your network.

### Adding USB Devices



### Adding a Drive

You can share a USB hard drive or flash drive to your network via your Router's USB port. Once connected, you can share files and music with other computers and devices within your network.

Plug your USB hard drive into the USB port on the back of your Router. When the light above the USB port is lit, your drive is available to computers on your network.

You can manually check the status of your shared drive by visiting the USB Print and Storage Manager, found under the Belkin Router Manager icon displayed in your system tray (Windows) or menu bar (Mac). If you have difficulty sharing a drive on your network, please see the "Troubleshooting" section of this manual.

### Adding a Printer

You can add a printer to your network via your Router's USB port. Once connected, you can print from various computers and wireless devices within your network.

Plug your printer's USB cable into the USB port located on the back of your Router. When the light above the USB port is lit, your printer is available to computers on your network.

You can manually check the status of your printer by visiting the USB Print and Storage Manager, found under the Belkin Router Manager icon displayed in your system tray (Windows) or menu bar (Mac). If you have difficulty sharing a printer on your network, please see the "Troubleshooting" section of this manual.

**Note:** Each computer that will use the printer must have both the Belkin software and the printer's driver installed. If the print driver is not installed, you will be asked to install it by the Belkin USB Print and Storage Manager.

### **Adding Other USB Devices**

Other USB devices may also be shared via your Router. Plug your device into the USB port located on the back of your Router. When the light above the USB port is lit, your device is available to computers on your network.

Computers running the Belkin USB Print and Storage Manager will be able to make use of the shared device by visiting the USB Print and Storage Manager, found under the Belkin Router Manager icon displayed in your system tray (Windows) or menu bar (Mac).

### Bundled Software

#### USB Print and Storage Manager

The USB Print and Storage Manager helps to manage and monitor the use of your USB printers, scanners, hard drives, and other devices that are connected to your Router's USB port and shared across your network. USB Print and Storage Manager is found in the Belkin Router Manager icon displayed in your system tray (Windows) or menu bar (Mac).

When you have one or more USB devices attached to your Router, the main actions for those devices are available directly from the Belkin Router Monitor menu.

#### Memory Safe

Memory Safe allows you to set up a routine backup of your files to a hard drive or flash drive attached to your Router. Memory Safe is found in the Belkin Router Manager icon displayed in your system tray (Windows) or menu bar (Mac).



### **Additional Capabilities**

#### **Guest Access**

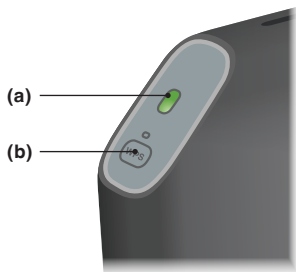
You can allow guests to use your Internet connection without joining your personal network. The network name and password for the guest network is located on the network information card found under the foot of your Router.

A person using your guest network will be able to join without a password, but will be shown a login page when they attempt to surf the Web. They will need to enter the guest password into this page to continue.

## GETTING TO KNOW YOUR ROUTER

---

### Front Panel



#### A) Router Status Light

Your Router's status is shown by the light on the front.

**Off:** The Router is not plugged into a power source.

**Blinking Green:** The Router is starting up.

**Solid Green:** The Router is connected to the Internet.

**Blinking Amber:** Either the RJ11 cable is not plugged in, or there is no signal.

#### B) Wi-Fi Protected Setup (WPS) Light and Button

The WPS button on the front of your Router can be used to help establish a secure connection between your Router and other WPS-enabled Wi-Fi devices such as computers. To use the WPS feature on your Router, see "Getting Started > Adding Computers to Your Network > Using the WPS Button".

The small light near the WPS button shows what is happening while you are using WPS to establish a connection.

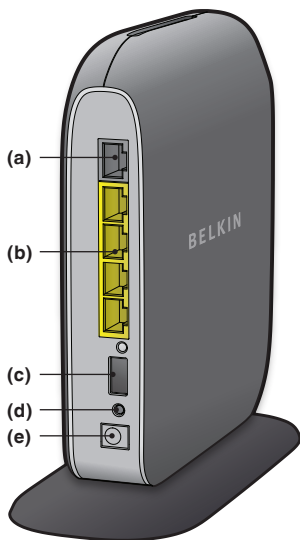
**Off:** Idle

**Blinking Green:** The Router is listening for a WPS-enabled computer or other device.

**Solid Green:** The Router has made a secure connection with the computer or other device.

**Amber:** A connection was not created.

### Back Panel



#### A) ADSL Connector

Connect your Router to your ADSL connection.

#### B) Wired (LAN) Connectors

Connect computers and other wired network devices to these ports using Ethernet cables.

#### C) USB Port

USB printers, disks, and other USB devices plugged into this port will be shared on your network. Each USB port has a light that indicates its status.

**Off:** No USB device is connected or the attached USB device is not in use.

**Blinking:** Please wait to unplug the device until the light turns off.

**On:** The USB device is connected and being shared on your network.

#### D) Reset Button

This button is used to restart your Router in rare cases when it functions incorrectly. Resetting the Router will preserve your settings. This button may also be used to restore the factory default settings. Please see the Troubleshooting section for more information.

#### E) Power Connector

Connect the included power supply to this jack.

## TECHNICAL DETAILS

---

### Technical Features

#### Integrated ADSL2+ Modem

The integrated ADSL2+ modem allows you to connect to the Internet via your local Internet Service Provider (ISP) without installing and maintaining a separate DSL modem.

#### Integrated 802.11n Wireless Access Point

Utilizing MIMO (Multiple Input Multiple Output) smart-antenna technology, your Router can reach data transfer speeds of up to 300Mbps across your network.

#### NAT IP Address Sharing

To save you the cost of adding IP addresses per computer in your house, your Belkin Router uses Network Address Translation (NAT) technology, allowing you to share a single IP address across your network.

#### SPI Firewall

Your Router is equipped with a firewall that will protect your network from a wide array of common attacks and viruses.

#### Universal Plug-and-Play (UPnP) Compatibility

The UPnP (Universal Plug-and-Play) feature in your Router offers seamless operation of voice and video messaging, games, and other applications that are UPnP-compliant.

#### Web-Based Advanced User Interface

You can easily make changes to your Router's advanced settings through your web browser. These changes can be made from any computer on your network.

#### Belkin Router Monitor

The Belkin Router Monitor application helps you to monitor your Router's status and change network settings.

#### Integrated 4-Port 10/100 Switch

Your Router has a built-in, 4-port network switch to allow your wired computers to share: printers, data, MP3 files, digital photos, and much more.

#### USB Port

The USB port lets you plug in printers, hard drives, and other USB devices to share across your network.

### System Requirements

Modem Router

Broadband ADSL Internet connection with RJ11 (telephone) connection

At least one computer with an installed network interface adapter

TCP/IP networking protocol installed on each computer

RJ11 ADSL telephone cable

Internet browser

### Setup Software

A computer running Windows® XP SP2 or higher, Windows Vista®, or Windows 7; or Mac OS® X v10.x

Minimum 1GHz processor and 256MB RAM

600MB of free hard-drive space for installation

### Memory Safe and USB Print and Storage Manager

Windows XP SP2 or higher or Windows Vista; or Mac OS X v10.4 or later

Minimum 1GHz processor and 256MB RAM

50MB of free hard-drive space for installation

### Troubleshooting

#### The Setup CD does not automatically start.

If Belkin Setup does not run when you insert the CD-ROM, your computer may not be configured to open CDs automatically.

If Belkin Setup does not appear within 15 seconds, browse to your CD-ROM drive and open the "Belkin Setup" icon. Alternatively, you may visit <http://router/> and perform the setup manually. Please see "Manual Setup Using Your Browser" earlier in this manual for more information.

#### Belkin Setup cannot find my Router.

If Belkin Setup is not able to communicate with your Router during the installation process, please check the following items.

1. Make sure that the wireless hardware on your computer is turned on, if available.
2. Try connecting your computer to one of the four "wired" ports on the Router with an Ethernet cable.
3. Ensure that the Router is on. The front-panel light should be on.
4. Unplug the Router's power supply for 10 seconds, then plug it back in.
5. There may be firewall software on your computer preventing an outgoing connection. You may choose to temporarily disable this software before attempting setup.

If Belkin Setup still cannot find the Router, you might choose to do a manual setup. Refer to "Manually Configuring Network Settings" in this manual for details.

### **Belkin Setup cannot connect my Router to the Internet.**

If Belkin Setup is not able to connect the Router to the Internet, please check the following items:

1. Use the troubleshooting suggestions within Belkin Setup.
2. If your ISP requires a user name and password, make sure that you have typed in your user name and password correctly. Some user names require that the ISP's domain may be at the end of the name. Example: "myname@myisp.com". The "@myisp.com" part of the user name may need to be typed as well as your user name.
3. If you continue to have no Internet connection, refer to "Manually Configuring Network Settings" in this manual for an alternative setup method.

### **Belkin Setup completed installation, but I cannot browse the Web. The light on the front of my Router is blinking amber.**

1. Make sure the Router is connected to your ADSL line with an RJ11 (telephone) cable via the Router's one gray ADSL port.
2. Check that the modem (ADSL) connection is connected to your broadband (ADSL) socket on the wall (via an ADSL filter if one is required).
3. Unplug your Router's power supply, wait 10 seconds, and plug it back in. This will cause the Router to try to reestablish communication with the ADSL line.

### **I can't connect to the Internet wirelessly.**

If the light on the front of the Router is solid green, then your Router is connected to the Internet. You may not be connected to the Router's wireless network. Please refer to "Adding Computers to Your Network" in this manual for instructions.

### **I can't connect to the Internet wirelessly and my network name is not listed in Available Networks.**

1. Verify that your Router is on and the front-panel light shows solid green.
2. If you are far from the Router, you might try moving closer to see if you might have been out of range.
3. Using a computer attached to the Router via a network cable, visit <http://router/> and ensure that "Broadcast SSID" is ON. This setting is found on the "Channel and SSID" page.



### **My wireless network performance is slow, inconsistent, suffers from weak signal, or I'm having difficulty maintaining a VPN connection.**

Wireless technology is radio-based, which means connectivity and the throughput performance between devices decreases when the distance between devices increases. Other factors that will cause signal degradation (metal is generally the worst culprit) are obstructions such as walls and metal appliances. Note also that connection speed may decrease as you move farther away from the Router.

In order to determine if wireless issues are related to range, we suggest temporarily moving the computer within 10 feet from the Router if possible.

**Changing the wireless channel**—Depending on local wireless traffic and interference, switching the wireless channel of your network can improve performance and reliability. See the section titled “Changing the Wireless Channel” for instructions on how to choose other channels.

**Limiting the wireless transmit rate**—Limiting the wireless transmit rate can help improve range and connection stability. Most wireless cards have the ability to limit the transmission rate. To change this property in Windows, go to the Windows Control Panel, open “Network Connections”, and double-click on your wireless card’s connection. In the properties dialog, select the “Configure” button on the “General” tab, then choose the “Advanced” tab and select the rate property.

Wireless client cards are usually set to automatically adjust the wireless transmit rate for you, but doing so can cause periodic disconnects when the wireless signal is too weak; as a rule, slower transmission rates are more stable. Experiment with different connection rates until you find the best one for your environment. Note that all available transmission rates should be acceptable for browsing the Internet. For more assistance, see your wireless card’s user manual.

### **I've installed this new Router and some of my network clients (computers, game consoles, etc.) are now unable to connect.**

Your new Router came pre-configured with a network name and password, found printed on an attached card. All clients must use this network name and password to connect wirelessly to your Router. You will need to find the network settings on your client, select the network name printed on the card from the list of available networks, and enter the password when prompted to join the wireless network.

### **Does the Router support Wireless Protected Access (WPA) security?**

The Router ships with WPA/WPA2 security turned on. Windows XP and some older network hardware may require a software update to support WPA/WPA2.

### **I am having difficulty setting up WPA security on my Router.**

1. Log in to your Router by visiting <http://router/> with your web browser. Click on the "Login" button in the top right-hand corner of the screen. You will be asked to enter your password. If you have never set a password, leave the "Password" field blank and click "Submit".
2. Click "Wireless" in the left-hand menu. Then click "Security" just below that.
3. Select the "WPA/WPA2" option.
4. Enter a password. This can be from 8–63 characters of your choice, including spaces and punctuation, OR a 64-digit hexadecimal number (using only the numbers 0–9 and letters A–F).

5. Click "Apply Changes" to finish. Your wireless connection is now encrypted. Each computer using your wireless network will need to use the new key.

**Note:** If you are configuring the Router over a wireless connection, you will have to re-connect to the Router after changing any security settings.

**Note:** Some older networking hardware supports only WEP encryption. If your older computers cannot connect to your network, try 128-bit or 64-bit WEP, or seek software updates from their manufacturers.

### **I am having difficulty setting up Wired Equivalent Privacy (WEP) security on my Router.**

1. Log in to your Router. Visit <http://router/> with your web browser. Click on the "Login" button in the top right-hand corner of the screen. You will be asked to enter your password. If you have never set a password, leave the "Password" field blank and click "Submit".
2. Click "Wireless" in the left-hand menu. Then click "Security" just below that.
3. Select the "128-bit WEP" option.
4. You may type in a WEP key manually, or generate one from a passphrase. Type a phrase in the "Passphrase" field and click the "Generate" button. A WEP key is composed of 26 hexadecimal digits (0–9, A–F). For example, C3 03 0F AF 4B B2 C3 D4 4B C3 D4 EE 74 is a valid 128-bit WEP key.

5. Click "Apply Changes" to finish. Your wireless activity is now encrypted. Each computer using your wireless network will need to use the new key.

**Note:** If you are configuring the Router over a wireless connection, you will have to re-connect to the Router after changing any security settings.

**Note:** Some older networking hardware supports only 64-bit WEP encryption. If your older computers cannot connect to your network, try 64-bit WEP.

**A disk I plugged into the USB port is not showing up on my computer or in Memory Safe.**

1. Is the light on over the USB port that the disk is plugged into? If not, try unplugging and re-plugging the disk. Please check that the USB connector is firmly plugged into the Router.
2. If your disk has an optional power supply, please use it while the disk is attached to your Router.
3. The Router supports FAT16, FAT32-, or NTFS-formatted disks. Disks in other formats will not appear in the Finder (Mac OS X) or Windows Internet Explorer.

### **A printer I plugged into the USB port is not showing up on my computer.**

1. Is the light on over the USB port that the printer is plugged into? If not, try unplugging and re-plugging the printer. Please check that the USB connector is firmly plugged into the Router.
2. To print to a printer attached to the Router, your computer must have that printer's driver installed. Please check that the driver is installed.
3. The printer may not be set to auto-connect. Via the Belkin Router Manager, open the USB Print and Storage Center. Check that the printer appears in the list of available devices. View the properties of the printer, and check that "auto-connect" is selected.

### **A different sort of USB device that I plugged into the USB port is not showing up on my computer.**

Most USB devices other than disks and printers must be accessed via the USB Print and Storage Center.

1. Is the light on over the USB port that the device is plugged into? If not, try unplugging and re-plugging the device. Please check that the USB connector is firmly plugged into the Router.
2. Via the Belkin Router Manager, open the USB Print and Storage Center. Check that the device appears in the list of available devices.
3. Select the device and click the "Use" button. The device will be virtually connected to your computer until you choose to "Stop Using" the device, or another person requests use of the device.

### Technical Support

#### US

<http://www.belkin.com/support>

#### UK

<http://www.belkin.com/uk/support>

#### Australia

<http://www.belkin.com/au/support>

#### New Zealand

<http://www.belkin.com/au/support>

#### Europe

<http://www.belkin.com/uk/support>

#### Singapore

1800 622 1130

#### Malaysia

1 800 812 076

#### India

1800-419-5546

#### Thailand

0018004413318

#### Philippines

180014410282

#### Hong Kong

30021318

#### China

800 819 0159

#### Australia

1800 235 546

#### New Zealand

0800 235 546

#### Asia email

[asia-support@belkin.com](mailto:asia-support@belkin.com)

#### Korea email

[koreasupport@belkin.com](mailto:koreasupport@belkin.com)

### **Belkin International, Inc., Limited 3-Year Product Warranty**

#### **What this warranty covers.**

Belkin International, Inc. ("Belkin") warrants to the original purchaser of this Belkin product that the product shall be free of defects in design, assembly, material, or workmanship.

#### **What the period of coverage is.**

Belkin warrants the Belkin product for three years.

#### **What will we do to correct problems?**

##### *Product Warranty.*

Belkin will repair or replace, at its option, any defective product free of charge (except for shipping charges for the product). Belkin reserves the right to discontinue any of its products without notice, and disclaims any limited warranty to repair or replace any such discontinued products. In the event that Belkin is unable to repair or replace the product (for example, because it has been discontinued), Belkin will offer either a refund or a credit toward the purchase of another product from Belkin.com in an amount equal to the purchase price of the product as evidenced on the original purchase receipt as discounted by its natural use.

#### **What is not covered by this warranty?**

All above warranties are null and void if the Belkin product is not provided to Belkin for inspection upon Belkin's request at the sole expense of the purchaser, or if Belkin determines that the Belkin product has been improperly installed, altered in any way, or tampered with. The Belkin Product Warranty does not protect against acts of God such as flood, lightning, earthquake, war, vandalism, theft, normal-use wear and tear, erosion, depletion, obsolescence, abuse, damage due to low voltage disturbances (i.e. brownouts or sags), non-authorized program, or system equipment modification or alteration.

### **How to get service.**

To get service for your Belkin product you must take the following steps:

1. Contact Belkin International, Inc., at 12045 Waterfront Drive, Los Angeles, CA 90094, Attn: Customer Service, or call (800)-223-5546, within 15 days of the Occurrence. Be prepared to provide the following information:
  - a. The part number of the Belkin product.
  - b. Where you purchased the product.
  - c. When you purchased the product.
  - d. Copy of original receipt.
2. Your Belkin Customer Service Representative will then instruct you on how to forward your receipt and Belkin product and how to proceed with your claim.

Belkin reserves the right to review the damaged Belkin product. All costs of shipping the Belkin product to Belkin for inspection shall be borne solely by the purchaser. If Belkin determines, in its sole discretion, that it is impractical to ship the damaged equipment to Belkin, Belkin may designate, in its sole discretion, an equipment repair facility to inspect and estimate the cost to repair such equipment. The cost, if any, of shipping the equipment to and from such repair facility and of such estimate shall be borne solely by the purchaser. Damaged equipment must remain available for inspection until the claim is finalized. Whenever claims are settled, Belkin reserves the right to be subrogated under any existing insurance policies the purchaser may have.



### **How state law relates to the warranty.**

THIS WARRANTY CONTAINS THE SOLE WARRANTY OF BELKIN. THERE ARE NO OTHER WARRANTIES, EXPRESSED OR, EXCEPT AS REQUIRED BY LAW, IMPLIED, INCLUDING THE IMPLIED WARRANTY OR CONDITION OF QUALITY, MERCHANTABILITY OR FITNESS FOR A PARTICULAR PURPOSE, AND SUCH IMPLIED WARRANTIES, IF ANY, ARE LIMITED IN DURATION TO THE TERM OF THIS WARRANTY.

Some states do not allow limitations on how long an implied warranty lasts, so the above limitations may not apply to you.

IN NO EVENT SHALL BELKIN BE LIABLE FOR INCIDENTAL, SPECIAL, DIRECT, INDIRECT, CONSEQUENTIAL OR MULTIPLE DAMAGES SUCH AS, BUT NOT LIMITED TO, LOST BUSINESS OR PROFITS ARISING OUT OF THE SALE OR USE OF ANY BELKIN PRODUCT, EVEN IF ADVISED OF THE POSSIBILITY OF SUCH DAMAGES.

This warranty gives you specific legal rights, and you may also have other rights, which may vary from state to state. Some states do not allow the exclusion or limitation of incidental, consequential, or other damages, so the above limitations may not apply to you.

## REGULATORY INFORMATION

---

### FCC Statement

#### DECLARATION OF CONFORMITY WITH FCC RULES FOR ELECTROMAGNETIC COMPATIBILITY

We, Belkin International, Inc., of 12045 Waterfront Drive, Los Angeles, CA 90094, declare under our sole responsibility that the device, , **F7D3402 v1**, complies with Part 15 of the FCC Rules. Operation is subject to the following two conditions: (1) this device may not cause harmful interference, and (2) this device must accept any interference received, including interference that may cause undesired operation.

#### Caution: Exposure to Radio Frequency Radiation.

The device shall be used in such a manner that the potential for human contact normal operation is minimized

This equipment complies with FCC radiation exposure limits set forth for an uncontrolled environment. This equipment should be installed and operated with a minimum distance of 20cm between the radiator and your body.

### Federal Communications Commission Notice

This equipment has been tested and found to comply with the limits for a Class B digital device, pursuant to Part 15 of the FCC Rules. These limits are designed to provide reasonable protection against harmful interference in a residential installation.

This equipment generates, uses, and can radiate radio frequency energy, and if not installed and used in accordance with the instructions, may cause harmful interference to radio communications. However, there is no guarantee that interference will not occur in a particular installation. If this equipment does cause harmful interference to radio or television reception, which can be determined by turning the equipment off and on, the user is encouraged to try and correct the interference by one or more of the following measures:

- Reorient or relocate the receiving antenna.
- Increase the distance between the equipment and the receiver.
- Connect the equipment to an outlet on a circuit different from that to which the receiver is connected.
- Consult the dealer or an experienced radio/TV technician for help.

FCC Caution: Any changes or modifications not expressly approved by the party responsible for compliance could void the user's authority to operate this equipment.

This device and its antenna(s) must not be co-located or operating in conjunction with any other antenna or transmitter.

## REGULATORY INFORMATION

---

### Canada-Industry Canada (IC)

The wireless radio of this device complies with RSS 139 & RSS 210 Industry Canada. This Class B digital apparatus complies with Canadian ICES-003.

Operation is subject to the following two conditions: (1) this device may not cause interference, and (2) this device must accept any interference, including interference that may cause undesired operation of the device.

Cet appareil numérique de la classe B conforme à la norme NMB-003 du Canada.

### Europe

European Union Radio products with the CE or CE alert marking comply with the R&TTE Directive (1999/5/EC) issued by the Commission of the European Community.

Compliance with this directive implies conformity to the following European Norms (in brackets are the equivalent international standards).

- EN 60950-1:2006 (IEC60950-1) – Product Safety
- EN 300 328 Technical requirement for radio equipment
- ETS 301 489 General EMC requirements for radio equipment.

### Information

Products with the CE marking comply with the EMC Directive (2004/108/EC) and the Low Voltage Directive (2006/95/EC) issued by the Commission of the European Community. Compliance with these directives implies conformity to the following European Product Family Standards.

- EN 55022 (CISPR 22) – Electromagnetic Interference
- EN 55024-1 – Electromagnetic Immunity
- EN 61000-3-2 (IEC610000-3-2) – Power Line Harmonics
- EN 61000-3-3 (IEC610000) – Power Line Flicker
- EN 60950-1 (IEC60950-1) – Product Safety

Products that contain the radio transmitter are sometimes labeled with the Notified Body number (CE0560) or CE alert marking if the standard used in the conformity is not harmonized across the European Community.

belkin.com

© 2010 Belkin International, Inc. All rights reserved. All trade names are registered trademarks of respective manufacturers listed. Mac and Mac OS are trademarks of Apple Inc., registered in the U.S. and other countries. Windows, Windows Vista, and Internet Explorer are either registered trademarks or trademarks of Microsoft Corporation in the United States and/or other countries.

## Free Manuals Download Website

<http://myh66.com>

<http://usermanuals.us>

<http://www.somanuals.com>

<http://www.4manuals.cc>

<http://www.manual-lib.com>

<http://www.404manual.com>

<http://www.luxmanual.com>

<http://aubethermostatmanual.com>

Golf course search by state

<http://golfingnear.com>

Email search by domain

<http://emailbydomain.com>

Auto manuals search

<http://auto.somanuals.com>

TV manuals search

<http://tv.somanuals.com>