

IMPORTANT!

This Guide refers to the following Products:



F5D7230-4 v.7



F5D7230-4 v.4/6



F5D7230-4 v.2



F5D7230-4 v.1

Using The F5D7230 Router As An Access Point

Please read the following carefully;

Synopsis:

This Self Help Guide will help you to set up any version of the Belkin F5D7230-4 Wireless Router so that it can be used as an Access Point rather than as a Router.

The process is reversible should you wish the device to be restored to its previous state as a Router.

Requirements:

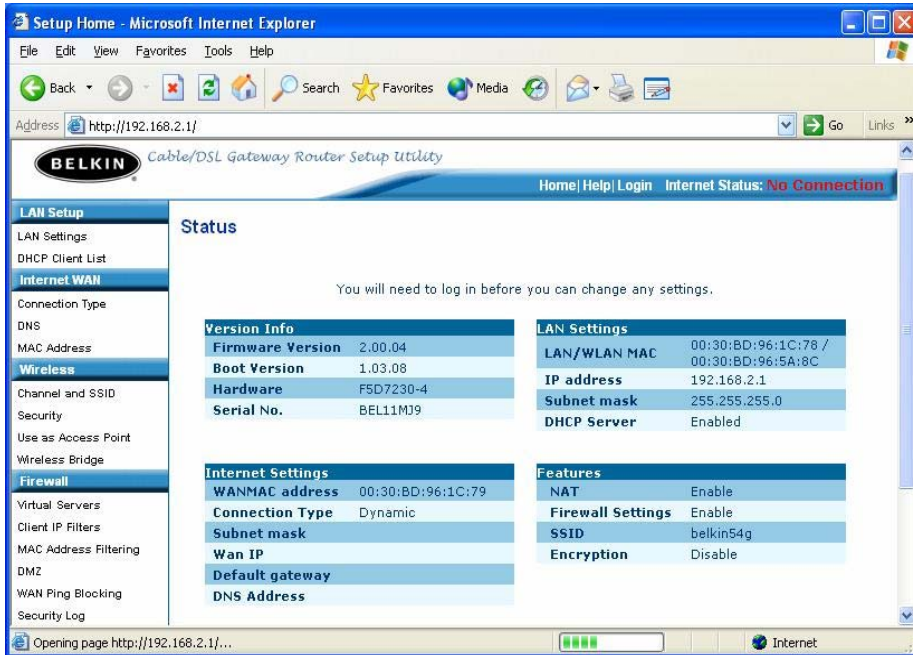
Please ensure that you have the Router plugged in and working before commencing. The Router should be connected to a Computer via the Patch Cable provided to ensure connectivity with the Router.

Hardware Requirements;

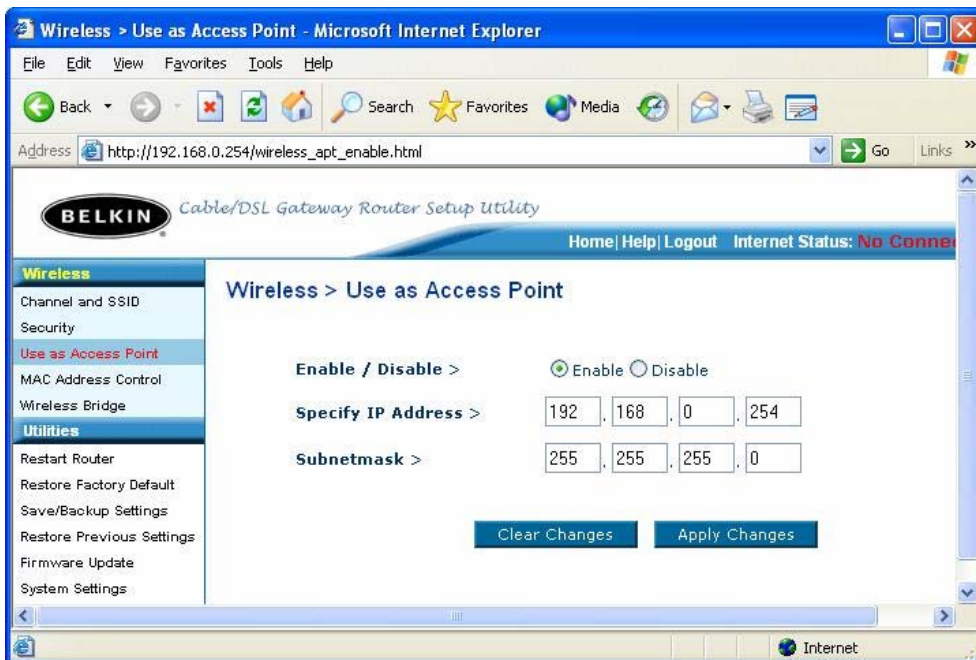
- Router
- Router Power Supply
- Computer
- Network (Patch) Cable

Using The F5D7230 Router As An Access Point

Connect to the Routers Web Interface (192.168.2.1)

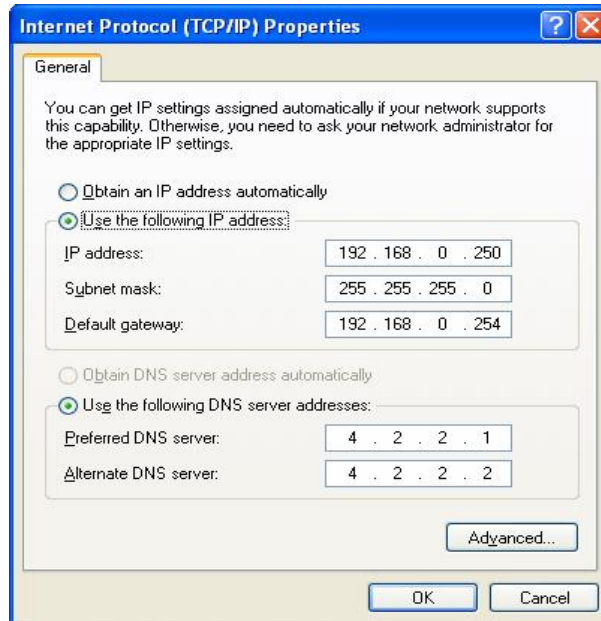


Once logged on, Click on the Menu Item 'Use As Access Point'.



Click on 'Enable' and you get this screen. Enter the IP Address you want for the Access Point. By default it will be '192.168.2.254' like a normal Access Point, for this test we will use 192.168.0.254 to show how to access it from a different IP. Apply the changes and now you will no longer be able to access the Router under 192.168.2.1.

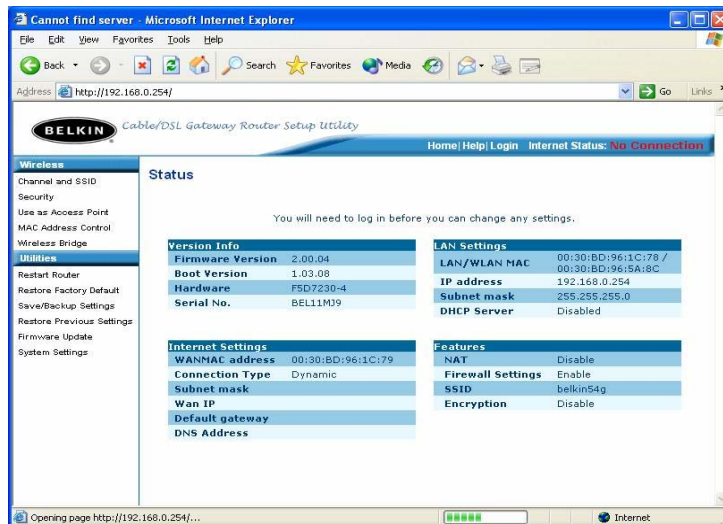
Now you need to configure your Computer to access the Access Point, a Static IP Address is recommended since the Router will only give you a 192.168.2.... IP Address and therefore you will not have access to it.



Configure your IP to be in the Range of the Access Point with an IP of 192.168.0.250 and put the IP of the Access Point 192.168.0.254 as the Default Gateway.

Click 'OK' and 'OK' again and you will be back in the Network Connections Window.

Now open Internet Explorer and type the IP Address of the Access Point (192.168.0.254). You should now be presented with this screen, which is the standard Web Interface screen for the Access Point.



Note | If you want to revert to Router Mode you need to click on 'Use As Access Point' and disable. Once the changes have been applied, you will need to revert your IP address to 'Obtain An IP Address Automatically'.

Free Manuals Download Website

<http://myh66.com>

<http://usermanuals.us>

<http://www.somanuals.com>

<http://www.4manuals.cc>

<http://www.manual-lib.com>

<http://www.404manual.com>

<http://www.luxmanual.com>

<http://aubethermostatmanual.com>

Golf course search by state

<http://golfingnear.com>

Email search by domain

<http://emailbydomain.com>

Auto manuals search

<http://auto.somanuals.com>

TV manuals search

<http://tv.somanuals.com>