

Experts In Home Cleaning™

PUREpro™

USER'S GUIDE

32N3 SERIES 220-240 V

- 2 Thank You
- 3 Safety Instructions
- 4 Product View
- 5 Assembly
- 6-7 Operations
- 8-9 Maintenance and Care
- 10 Troubleshooting
- 11 Replacement Parts
- 12 Warranty



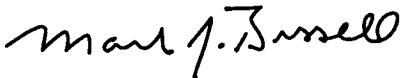
Thanks for buying a BISSELL PurePro™ Compact Vacuum

We're glad you purchased a BISSELL PurePro vacuum. Everything we know about floor care went into the design and construction of this complete, high-tech home cleaning system.

Your BISSELL canister vacuum is well made, and we back it with a limited one year warranty. We also stand behind it with a knowledgeable, dedicated Consumer Services department, so, should you ever have a problem, you'll receive fast, considerate assistance.

My great-grandfather invented the floor sweeper in 1876. Today, BISSELL is a global leader in the design, manufacture, and service of high quality homecare products like your BISSELL canister vacuum.

Thanks again, from all of us at BISSELL.



Mark J. Bissell
Chairman, President & CEO

IMPORTANT SAFETY INSTRUCTIONS

When using an electrical appliance, basic precautions should be observed, including the following:

READ ALL INSTRUCTIONS BEFORE USING YOUR BISSELL CANISTER VACUUM.

⚠ WARNING - To reduce the risk of fire, electric shock, or injury:

- Use indoors only.
- For dry pick up only.
- Do not leave machine when it is plugged in.
- Do not use with damaged cord or plug.
- If appliance is not working as it should, has been dropped, damaged, left outdoors, or dropped into water, return it to a service agent.
- Do not handle unit with wet hands.
- Do not pull or carry by cord, use cord as a handle, close door on cord, pull cord around sharp corners or edges, run appliance over cord, or expose cord to heated surfaces.
- Do not unplug by pulling on cord. Unplug by grasping plug.
- Do not run appliance over cord.
- Do not handle plug or appliance with wet hands.
- Do not expose hair, loose clothing, fingers or body parts to openings or moving parts.
- Do not pick up hot or burning objects such as cigarettes, matches, or hot ashes.
- Do not pick up flammable or combustible materials (lighter fluid, petrol, kerosene, etc.) or use in the presence of explosive liquids or vapour.
- Do not use appliance in an enclosed space filled with vapours given off by oil base paint, paint thinner, some moth proofing substances, flammable dust, or other explosive or toxic vapours.
- Not intended for use by persons (including children) with reduced physical, sensory or mental capabilities, or lack of experience and knowledge, unless they have been given supervision or instruction concerning use of the appliance by a person responsible for their safety.

- Young children should be supervised to ensure that they do not play with the appliance.
- Remove plug from electrical outlet before cleaning or maintaining the appliance.
- If the supply cord is damaged, it must be replaced by the manufacturer or its service agent in order to avoid a hazard.
- Do not pick up toxic material (chlorine bleach, ammonia, drain cleaner, petrol, etc.).
- Do not use for any purpose other than described in this User's Guide.
- Use only manufacturer's recommended attachments.
- Do not use with any opening blocked; keep free of dust, lint, hair, and anything that may reduce air flow.
- Keep appliance on a level surface.
- Turn off all controls before unplugging.
- Be extra careful when cleaning stairs.
- This appliance is provided with double insulation. Use only identical replacement parts.
- Do not use without the dust bag and filters in place.
- Pay close attention when working around children.

SAVE THESE INSTRUCTIONS FOR FUTURE USE.

IMPORTANT FOR OPERATION ON A 220-240 VOLT A.C. 50/60 Hz POWER SUPPLY ONLY.

THIS MODEL IS FOR HOUSEHOLD USE ONLY.

Product view



CAUTION:

Do not plug in your vacuum until you are familiar with all instructions and operating procedures.

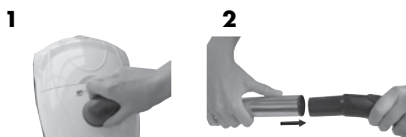
Assembly

1. Connect swivel hose by firmly inserting it into the suction opening on the canister. The hose will click into place when correctly inserted.
2. Connect telescoping extension wand to the handle end of the flex hose. Twist slightly to tighten.
3. Connect floor nozzle to the end of the telescoping extension wand. Twist slightly to tighten.
4. To extend telescoping wand, press down on the black button, in the direction of the arrows, with one hand and firmly grasp and pull out extending portion of the wand to desired length with the opposite hand.
5. Once assembled, you can store your vacuum in one of two positions:
 - A. Storing in the in-use position:

To store with the floor nozzle attached, insert the storage clip (located on the back of the floor nozzle) into the storage slot on the rear of the vacuum.
 - B. Storing in the upright position:

To store with the floor nozzle attached, stand the vacuum in the upright position and insert the storage clip (located on the back of the floor nozzle) into the storage slot on the bottom of the vacuum.

WARNING:
Plastic film can be dangerous. To avoid danger of suffocation, keep away from babies and children.



Storing in the in-use position



Storing in the upright position



Operations

Power cord

The power cord is located at the rear of the vacuum. Gently pull out the power cord, watching for the yellow line. Stop pulling the power cord once the yellow line is visible. There is also a red line, which indicates the end of the usable cord. Do not pull the power cord out beyond the red line.

Automatic cord rewind

Your vacuum is equipped with an automatic cord rewind. When cleaning is finished, press the power button OFF and grasp the plug to disconnect from the electrical outlet. Hold the plug and press the automatic cord rewind button to rewind the cord automatically.

Power button

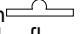
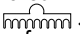
Turn the power on or off by pressing lightly downward on the power button (⓪).

Special tools

Your BISSELL PurePro is not only a powerful carpet and rug vacuum cleaner, it's also a versatile bare floor vacuum cleaner and above floor vacuum cleaner when you select one of the special tools.

Floor nozzle:

Use to vacuum carpets, rugs and bare floors. Swivel head turns to get into tight spaces and fits under cabinets.

1. To vacuum carpets and rugs, push the brush switch to the carpet position . This will pull the brushes up into the floor nozzle.
2. To vacuum bare floors, push the brush switch to the bare floor position . This will extend the brushes down from the floor nozzle.

Upholstery tool:

Use the upholstery tool to clean curtains, draperies, cushions and fabrics.

NOTE: Use the air flow regulator to reduce air flow as needed when using the upholstery tool.

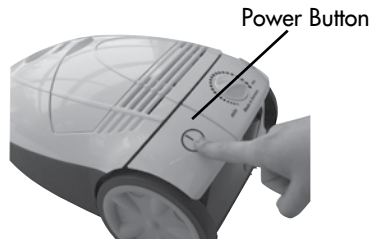


Automatic Cord Rewind Button



CAUTION:

Be careful to avoid injury as cord retracts very quickly.



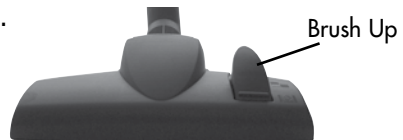
Power Button



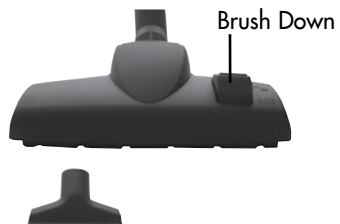
CAUTION:

Before using your vacuum, make sure that the dust bag and all filters (pre-motor and post-motor) are in place. Do not operate your vacuum without the dust bag and filters.

1.



2.



Operations

Special tools continued

Crevice tool:

Use the crevice tool in tight, narrow spaces.



Dusting brush:

Attach dusting brush to the tip of the crevice tool to dust furniture, blinds, books, lamps, shelves and baseboards.



Variable suction power control

The variable suction power control is located on the top of the vacuum. Twist the dial toward **MAX** for maximum suction. Twist the dial toward **MIN** to minimize suction for lightly soiled areas or delicate fabrics.



High filtration dust bag

The **BISSELL PurePro** features a non-woven, high filtration dust bag that captures more fine dust than traditional paper dust bags, giving off less dust emissions. It also holds more fine dust particles, giving you longer lasting suction power.



Bag change indicator

The bag change indicator is located right below where the hose inserts into the vacuum. If the colour scale bag change indicator fills the window while you are vacuuming, the dust bag needs to be replaced. The dust bag may appear to be full or only partially full depending upon the type of debris picked up. Fine particles can block the airflow in the dust bag and reduce suction before the dust bag is full. If the colour scale bag change indicator remains full, even after changing the dust bag, turn the vacuum off and check for a clog in the hose or tools.



Note: The indicator may fill the window when using the tools due to the restricted airflow. This does not necessarily mean that the dust bag is full. If the indicator does not turn off once the tool is removed, check for a clog in the hose/tools or replace the dust bag.

Maintenance and care

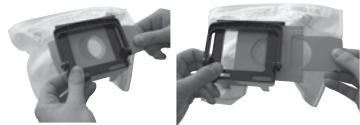
Dust bag replacement

1. Unplug the vacuum from electrical outlet.
2. Open the dust bag compartment by lifting up on the latch on the door on the front of the vacuum, until the door locks into place.
3. Close the filter bag by pulling the cardboard strap. This serves to cleanly seal the full dust bag. Lift out the dust bag holder and dust bag by pulling vertically on the convenient handle, located on top of the dust bag holder.
4. Release the dust bag from the holder by grasping the cardboard strap, which was used to seal the full dust bag, and pulling to the right, removing the dust bag out of the holder. Discard the used dust bag.
5. Slide the new dust bag into the holder by inserting the dust bag into the tabs located at the bottom of the holder. Make sure the dust bag has slid completely into place for proper use.
6. Place holder and new dust bag back into the dust bag compartment, making sure the entire bag is tucked in below the seal gasket.
7. Close dust bag compartment door and press down gently until it locks into place.
NOTE: The dust bag compartment door will not close without the dust bag in place.

2.



3.



WARNING:

To reduce the risk of electric shock, turn power switch OFF and disconnect plug from electrical outlet before performing maintenance or troubleshooting checks.

Replacing the HEPA media pre-motor filter

The HEPA media pre-motor filter protects the motor from dirt and dust particles and assists in the filtration process to return clean air to the room.

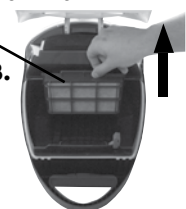
1. Unplug the vacuum from electrical outlet.
2. Open the dust bag compartment by lifting up on the latch on the door at the front of the vacuum until the door locks into place. Lift out the dust bag holder and dust bag.
3. Remove the filter frame from the filter holder by grasping the lip of the frame and pulling up.

NOTICE:

This product is intended for household use only and not for commercial or industrial use. Vacuuming of dust from products like plaster, concrete or ashes will damage the motor and void the warranty.

HEPA media Pre-Motor Filter

3.



Maintenance and care

Replacing the HEPA media pre-motor filter continued

4. Replace the filter with a new HEPA media filter by having the tab, connected to the filter frame, on top and inserting the filter frame straight down into the filter holder.

NOTE: The filter frame should be placed so the protective frame is visible.

5. Place dust bag holder and dust bag into the dust bag compartment, making sure the entire bag is tucked in below the seal gasket.
6. Close dust bag compartment door and press down gently until it locks into place.

Tip:

Change HEPA media filter every 6 months. Otherwise, efficiency and air permeability will be reduced.



WARNING:

Do not operate cleaner with damp or wet filters or without all filters in place.

Replacing the post-motor micro filter

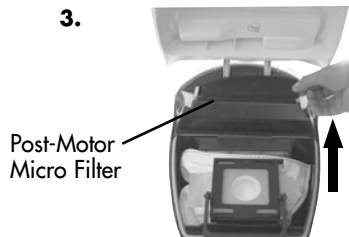
The post-motor micro filter assists in the filtration process to return clean air to the room.

1. Unplug the vacuum from electrical outlet.
2. Open dust bag compartment by lifting up on the latch on the door at the front of the vacuum, until the door locks into place.
3. Remove the post-motor micro filter from indentation, which is located towards the back of the dust bag compartment near the hinges of the door.
4. If there is no visible wear and tear and/or imbedded dirt, it is acceptable to clean the filter by hand washing it with warm water. A mild detergent can be used if desired. Allow the filter to air dry thoroughly before replacing.

NOTE: It is recommended to always replace the post-motor micro filter after every fifth replacement of the dust bag.

5. Replace the post-motor micro filter back into indentation, with the white side facing down.
6. Close the dust bag compartment door and press down gently until it locks into place.

3.



Troubleshooting



WARNING:

To reduce the risk of electric shock, turn power OFF and disconnect plug from electrical outlet before performing maintenance or troubleshooting.

Vacuum cleaner won't run

Possible causes

1. Vacuum cleaner is not plugged in
2. Power button is not pressed down

Remedies

1. Check electrical plug
2. Press power button down

Vacuum cleaner won't pick up or low suction

Possible causes

1. Tools, flex hose and/or telescoping extension wand are blocked
2. Filters are dirty
3. Dust bag is full
4. Swivel hose not securely attached to suction opening
5. Crack or hole in flex hose
6. Variable suction power control is set to minimum setting

Remedies

1. Remove each part and check for blockages
2. Check and clean or replace pre-motor and post-motor filters
3. Replace with new dust bag
4. Make sure swivel hose is locked into suction opening
5. Check hose and replace if needed
6. Change to maximum setting

Visible dust escaping from vacuum

Possible causes

1. Dust bag is full
2. Filters missing or installed incorrectly
3. Filters are dirty
4. Flex hose is blocked
5. Swivel hose not securely attached to suction opening
6. Crack or hole in flex hose

Remedies

1. Replace with new dust bag
2. Check pre-motor and post-motor filters for correct installation
3. Check and clean or replace pre-motor and post-motor filters
4. Remove hose and check for blockages
5. Make sure swivel hose is locked into suction opening
6. Check hose and replace if needed

Other maintenance or service not included in the manual should be performed by an authorized service representative.

Thank you for selecting a BISSELL product.

Please do not return this product to the store.

Replacement parts - BISSELL vacuum

Item	Part No.	Part Name
1	203-7553	Floor Nozzle
2	203-7554	Flexible Hose with Handle
3	203-7555	Telescoping Extension Wand
4	203-7556	Upholstery Brush
5	203-7557	Crevice Tool
6	203-7558	Dusting Bursh

1



2



3



4



5



6



Warranty - BISSELL PurePro™ vacuum

This warranty gives you specific legal rights, and you may also have other rights which may vary from country to country. If you need additional instruction regarding this warranty or have questions regarding what it may cover, please contact BISSELL Consumer Services by E-mail, telephone, regular mail as described below, or contact your local in country distributor.

Limited One Year Warranty

Subject to the *EXCEPTIONS AND EXCLUSIONS identified below, BISSELL Homecare, Inc. will repair or replace (with new or remanufactured components or products), at BISSELL's option, free of charge from the date of purchase by the original purchaser, for one year any defective or malfunctioning part due to manufacturer defect.

See "BISSELL Consumer Services" information below.

This warranty applies to product used for personal, and not commercial or rental service. This warranty does not apply to fans or routine maintenance components such as filters, belts, or brushes. Damage or malfunction caused by negligence, abuse, neglect, unauthorized repair, or any other use not in accordance with the User's Guide is not covered.

BISSELL Consumer Service:

If your BISSELL product should require service or if you need information about repairs, authorized service centers in your area, replacement parts or your warranty, please contact BISSELL Consumer Services, as indicated below, or contact your local in country distributor.

For UK inquiries:

Monday - Thursday 9 am — 5 pm
Friday 9 am — 4 pm

BISSELL Homecare (Overseas) Inc.

The Boat Yard
105 Straight Road
Old Windsor
Berkshire, SL4 2SE
United Kingdom
Telephone: 0844-888-6644

For New Zealand inquiries:

Monday - Friday 9 am — 5 pm
Parex Industries Ltd.
5 Tolich Place
Henderson 0610
Auckland
New Zealand
Telephone: 0800-247-735

For Australian inquiries:

Monday - Friday 9 am — 5 pm

BISSELL AUSTRALIA PTY LIMITED

42 Rocco Drive
Scoresby 3179
Victoria
Australia
Telephone: 1-800-811-183

For all other inquiries:

Monday - Friday 8 am — 4 pm
BISSELL Homecare, Inc.
PO Box 1888
Grand Rapids, Michigan 49501 USA
Telephone: 01-616-453-4451
Fax: 01-616-453-1383

BISSELL HOME CARE, INC. IS NOT LIABLE FOR INCIDENTAL OR CONSEQUENTIAL DAMAGES OF ANY NATURE ASSOCIATED WITH THE USE OF THIS PRODUCT. BISSELL'S LIABILITY WILL NOT EXCEED THE PURCHASE PRICE OF THE PRODUCT.

*EXCEPTIONS AND EXCLUSIONS FROM THE TERMS OF THE LIMITED WARRANTY

THIS WARRANTY IS EXCLUSIVE AND IN LIEU OF ANY OTHER WARRANTIES EITHER ORAL OR WRITTEN. ANY IMPLIED WARRANTIES WHICH MAY ARISE BY OPERATION OF LAW, INCLUDING THE IMPLIED WARRANTIES OF MERCHANTABILITY AND FITNESS FOR A PARTICULAR PURPOSE, ARE LIMITED TO THE ONE YEAR DURATION FROM THE DATE OF PURCHASE AS DESCRIBED ABOVE.



©2010 BISSELL Homecare, Inc.
Grand Rapids, Michigan
All rights reserved. Printed in China
Part Number 110-4271
Rev 7/10
Visit our website at:
www.bissell.com



Free Manuals Download Website

<http://myh66.com>

<http://usermanuals.us>

<http://www.somanuals.com>

<http://www.4manuals.cc>

<http://www.manual-lib.com>

<http://www.404manual.com>

<http://www.luxmanual.com>

<http://aubethermostatmanual.com>

Golf course search by state

<http://golfingnear.com>

Email search by domain

<http://emailbydomain.com>

Auto manuals search

<http://auto.somanuals.com>

TV manuals search

<http://tv.somanuals.com>