

NBC 255-W and 265-W Wireless Connection Guide

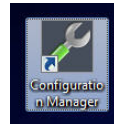
Objective: This wireless connection guide is designed to assist with establishing wireless connectivity between typical commercially available wireless routers and Bosch NBC 255-W / NBC 265-W cameras.

Minimum prerequisites prior to starting:

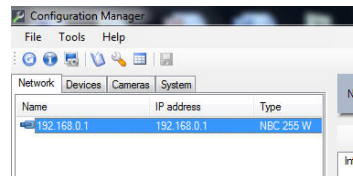
- The NBC Camera should be assembled as per the directions of the quick installation guide provided with the camera
 - Wireless antenna is attached
 - SD card is installed
 - Power adapter is connected to the camera
- Bosch Video Client and Configuration Manager software should be installed on your PC
- A physical Ethernet connection to the camera established
- Access to an 802.11 B, G, or backwards compatible N wireless router
 - NOTE: If using an 802.11N router, review the manufacturer's specifications for compatibility with 802.11G products. *If the router is not backwards compatible it will not communicate with the camera.*

Step 1: Assigning an IP address to the NBC Camera

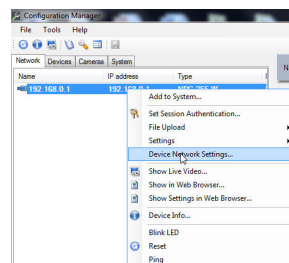
The first step in establishing wireless communications is to assign a static IP address to the NBC camera. Open the Configuration Manager application on your PC.



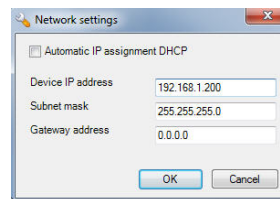
- Once the program is opened you should see the NBC camera appear in the "Network" column as shown. By default all Bosch encoders and network cameras come with a factory default IP address of 192.168.0.1.



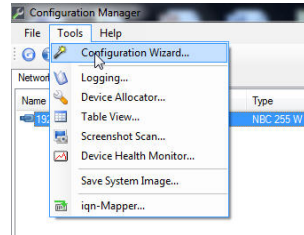
- **Manual Assignment:** You can assign an IP address manually or by using the Configuration Wizard. We will cover the manual method first. Simply right-click the camera in the "Network" column and select "Device Network Settings..." as shown.



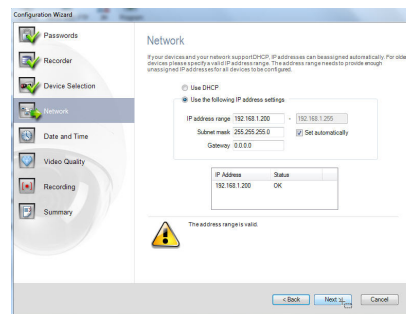
- Once the "Network settings" menu is open enter valid IP address information for the desired network and select "OK". After selecting "OK" the camera will reboot.
 - NOTE: Most off-the-shelf home wireless routers come preconfigured in a 192.168.1.x address range (Private C Class Address). For this guide we will use an address of 192.168.1.200.



- **Using the Configuration Wizard:** To assign an IP address using the wizard, select the “Tools” menu and “Configuration Wizard...” from the drop down menu as shown.

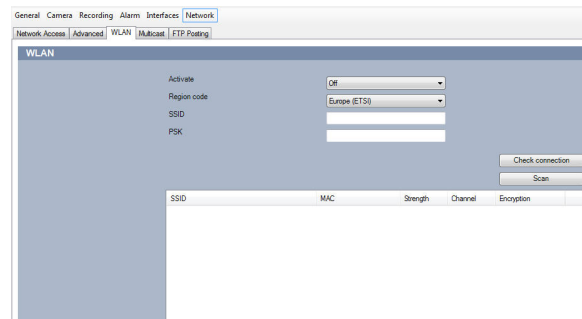


- Once the “Wizard” opens follow the prompts until you come to the “Network” menu. From this menu select “Use the following IP address settings” and enter valid IP addressing for the network in which the device will operate.
 - Follow the “Wizard” prompts until you have reached the “Summary” page. Select “Finish”.

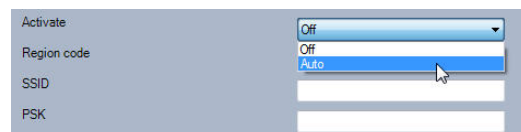


Step 2: Establishing wireless communication

- Once you have assigned a valid IP address to your NBC camera navigate to the “Network” menu and the “WLAN” submenu as shown.



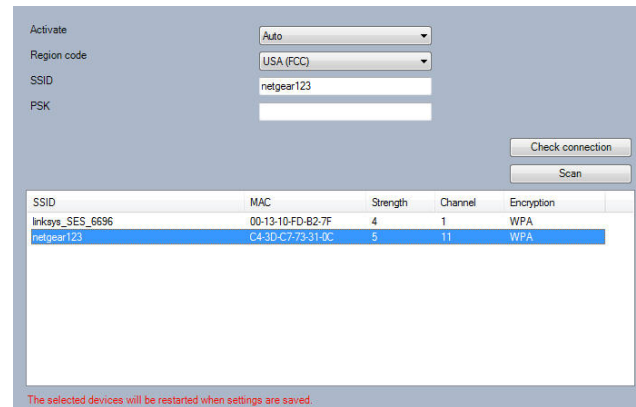
- From the “WLAN” submenu select “Auto” in the “Activate” drop down menu as shown here. This turns on the camera’s radio.



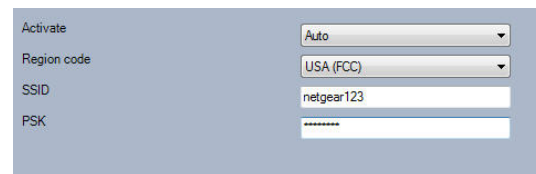
- Next select the proper region from the “Region code” dropdown menu as shown. In this guide we will use “USA (FCC)”



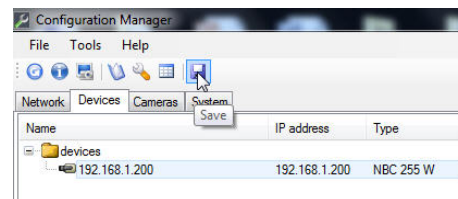
- Select the “Scan” button. Once the wireless network scan is complete you will see a list of available wireless networks with which to establish communications. Select the wireless access point to which you wish to connect. This will auto-fill the SSID menu with the Service Set Identifier of the router you selected.
 - NOTE: NBC-W cameras will communicate to 802.11 B and G routers using WPA and WPA2 encryption.
 - If there are multiple routers detected, best practices dictate that the routers should be at least 6 channel numbers apart to prevent interference in communication.
 - If the wireless router you are working with is in hidden mode you can manually enter the SSID and PSK.



- Enter the “pass key” to access the wireless router in the PSK menu as shown.
 - NOTE: The wireless router you are connecting to must have security enabled for the NBC camera to connect.

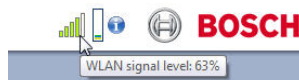


- Select the “Save” button and **immediately disconnect the Ethernet cable from the camera!** Once you select “Save” the camera will reboot and the network changes will take effect. The camera **will not function** in wireless mode while an Ethernet cable is attached. If the camera does not reboot, you must cycle power.



Step 3: Validating wireless communication

- Disconnect your physical network connection and ensure your PC is connected to the desired wireless network. Close the Configuration Manager application and re-open it. This will ensure that the application’s detection beacon is using the wireless network and not the wired network.
- Right-click the camera’s icon in the “Network” or “Devices” tab and select “Show in Web Browser”. This should open the camera’s web page.
- From the Web Browser you can mouse over the “WLAN” menu in the top right hand corner. This will display the current signal strength of your wireless network to the camera.



Free Manuals Download Website

<http://myh66.com>

<http://usermanuals.us>

<http://www.somanuals.com>

<http://www.4manuals.cc>

<http://www.manual-lib.com>

<http://www.404manual.com>

<http://www.luxmanual.com>

<http://aubethermostatmanual.com>

Golf course search by state

<http://golfingnear.com>

Email search by domain

<http://emailbydomain.com>

Auto manuals search

<http://auto.somanuals.com>

TV manuals search

<http://tv.somanuals.com>