

EXPERIENCE THE RHYTHM OF YOUR LIFE

# High Efficiency 200 Watt Audio Amplifier



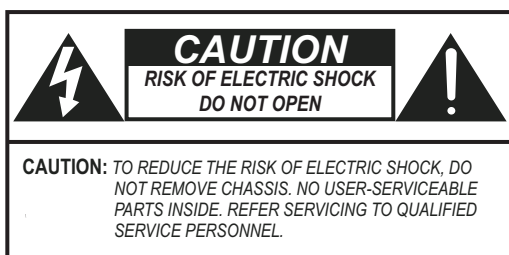
# ENGLISH

## Danger

Exposure to extremely high noise levels may cause a permanent hearing loss. Individuals vary considerably to noise induced hearing loss but nearly everyone will lose some hearing if exposed to sufficiently intense noise for a sufficient time. The U.S. Government's Occupational Safety and Health Administration (OSHA) has specified the following permissible noise level exposures:

DURATION PER DAY (HOURS)	8	6	4	3	2	1
SOUND LEVEL (dB)	90	93	95	97	100	103

According to OSHA, any exposure in the above permissible limits could result in some hearing loss. Ear plugs or protectors in the ear canal or over the ears must be worn when operating this amplification system in order to prevent a permanent hearing loss. If exposure in excess of the limits as put forth above, to insure against potentially harmful exposure to high sound pressure levels, it is recommended that all persons exposed to equipment capable of inducing high sound pressure levels, such as this amplification system, be protected by hearing protectors while this unit is in operation.



**AVIS: RISQUE DE CHOC ELECTRIQUE-NE PAS OUVRIR.**



THIS SYMBOL IS INTENDED TO ALERT THE USER TO THE PRESENCE OF NON-INSULATED "DANGEROUS VOLTAGE" WITHIN THE PRODUCT'S ENCLOSURE THAT MAY BE OF SUFFICIENT MAGNITUDE TO CONSTITUTE A RISK OF ELECTRIC SHOCK TO PERSONS.



THIS SYMBOL IS INTENDED TO ALERT THE USER TO THE PRESENCE OF IMPORTANT OPERATING AND MAINTENANCE (SERVICING) INSTRUCTIONS IN THE LITERATURE ACCOMPANYING THE UNIT.



APPARATUS SHALL NOT BE EXPOSED TO DRIPPING OR SPLASHING AND THAT NO OBJECTS FILLED WITH LIQUIDS, SUCH AS VASES, SHALL BE PLACED ON THE APPARATUS.

## IMPORTANT SAFETY INSTRUCTIONS

1. Read all safety and operating instructions before using this product.
2. All safety and operating instructions should be kept for future reference.
3. Read and understand all warnings listed on the operating instructions.
4. Follow all operating instructions to operate this product.
5. This product should not be used near water, i.e. Bathtub, sink, swimming pool, wet basement, etc.
6. Only use dry cloth to clean this product.
7. Do not block any ventilation openings, It should not be placed flat against a wall or placed in a built-in enclosure that will impede the flow of cooling air.
8. Do not install this product near any heat sources ;such as,radiators, heat registers, stove or other apparatus (including heat producing amplifiers) that produce heat.
9. Do not defeat the safety purpose of the polarized or grounding-type plug. A polarized plug has two blades with one wider than the Other.A grounding-type plug has two blades and a third grounding prong. The wide blade or the third prong are provided for your safety If the provided plug does not fit into your outlet, consult an electrician for replacement of the obsolete outlet.
10. Protect the power cord being walked on or pinched, particularly at Plugs, convenience receptacles and the point where they exit from the apparatus. Do not break the ground pin of the power supply cord.
11. Only use attachments specified by the manufacturer.
12. Use only with the cart, stand, tripod, bracket, or table specified by the manufacturer or sold with the apparatus. When a cart is used, use caution when moving cart/apparatus combination to avoid injury from tip-over.
13. Unplug this apparatus during lightning storms or when unused for long periods of time.
14. Care should be taken so that objects do not fall and liquids are not spilled into the unit through the ventilation ports or any other openings.
15. Refer all servicing to qualified service personnel. Servicing is required when the apparatus has been damaged in any way; such as, power-supply cord or plug is damaged, liquid has been spilled or objects have fallen into the apparatus, the apparatus has been exposed to rain or moisture, does not operate normally or has been dropped.
16. **WARNING:** To reduce the risk of fire or electric shock, do not expose this apparatus to rain or moisture.

# FRENCH

## Danger

L'exposition a des niveaux eleves de bruit peut provoquer une perte permanente de l'audition, Chaque organisme humain reagit differemment quant a la perte de l'audition, mais quasiment tout le monde subit une diminution de l'acuite auditive lors d'une exposition suffisamment longue au bruit intense. Les autorites competentes en reglementation de bruit ont defini les expositions tolerees aux niveaux de bruits:

DURE EN HEURES PAR JOUR	8	6	4	3	2	1
INIVEAU SONORE CONTINU EN dB	90	93	95	97	100	103

Selon les autorites, toute exposition dans les limites citees ci-dessus, peuvent provoquer certaines pertes d'audition. Des bouchons ou protections dans l'appareil auditif ou sur l'oreille doivent etre portes lors de l'utilisation de ce systeme d'amplification afin de prevenir le risque de perte permanente de l'audition, Dans le cas d'expositions superieures aux limites precitees il est recommande, afin de se prémunir contre les expositions aux pressions acoustiques l'evenes potentiellement dangeure u ses, aux personnes exposees aux equipements capables de delivrer de telles puissances, tels ce systeme d'amplification en fonctionnement, de proteger l'appareil auditif.



CE SYMBOLE A POUR BUT D'AVERTIR L'UTILISATEUR DE LA PRESENCE DE VOLTAGE DANGEREUX NON-ISOLE A L'INTERIEUR DE CE PRODUIT QUI PEUT ETRE DE PUISSANCE SUFFISAMMENT IMPORTANTE POUR PROVOQUER UN CHOC ELECTRIQUE AUX PERSONNES.



CE SYMBOLE A POUR BUT D'AVERTIR L'UTILISATEUR DE LA PRESENCE D'INSTRUCTIONS D'UTILISATION ET DE MAINTENANCE DANS LES DOCUMENTS FOURNIS AVEC CE PRODUIT.



AFIN DE REDUIRE LES RISQUÉ D'INCENDIE ET DE DECHARGE ELECTRIQUE, NE PAS EXPOSER CET APPAREIL A LA PLUIE OU A L'HUMIDITE.

## IMPORTANTES INSTRUCTIONS DE SECURITE

1. Lire avec attention toutes les recommandations et précautions d'emploi avant d'utiliser ce produit.
2. Toutes les recommandations et précautions d'emploi doivent être conservées afin de pouvoir s'y reporter si nécessaire.
3. Lire et comprendre tous les avertissements énumérés dans les précautions d'emploi.
4. Suivre toutes les précautions d'emploi pour utiliser ce produit.
5. Ce produit ne doit pas être utilisé près d'eau, comme par exemple baignoires, éviers, piscine, sous-sol humides ... Etc.
6. Utiliser exclusivement un chiffon sec pour nettoyer ce produit.
7. Ne bloquer aucune ouverture de ventilation. Ne pas placer le produit tout contre un mur ou dans une enceinte fermée, cela générerait le flux d'air nécessaire au refroidissement.
8. Ne pas placer le produit près de toute source de chaleur telle que radiateurs, arrivées d'air chaud, fourneaux ou autres appareils générant de la chaleur (incluant les amplificateurs producteurs de chaleur) .
9. Ne pas négliger la sécurité que procure un branchement polarisé ou avec raccordement à la terre, Un branchement polarisé comprend deux fiches dont l'une est plus large que l'autre. Un branchement à la terre comprend deux fiches plus une troisième reliée à la terre. Si la fiche secteur fournie ne s'insère pas dans votre prise de courant. consulter un 'électricien afin de remplacer votre prise obsolète.
10. Protéger le cordon d'alimentation de tout écrasement ou pincement, particulièrement au niveau des fiches, des réceptacles utilisés et à l'endroit de sortie de l'appareil. Ne pas casser la fiche de terre du cordon d'alimentation.
11. Utiliser uniquement les accessoires spécifiés par le constructeur.
12. Utiliser uniquement avec le chariot de transport, le support, le trépied, la console ou la table spécifiés par le constructeur ou vendus avec l'appareil. Lors de l'utilisation d'un chariot, bouger avec précaution l'ensemble chariotlappareil afin d'éviter les dommages d'un renversement.
13. Débrancher cet appareil lors d'orages ou s'il n'est pas utilisé pendant une longue période.
14. Des précautions doivent être prises afin qu'aucun objet ne tombe et qu'aucun liquide ne se répande à l'intérieur de l'appareil par les orifices de ventilation ou n'importe quelle autre ouverture.
15. Pour toutes interventions techniques s'adresser à un technicien qualifié. L'intervention technique est nécessaire lorsque l'appareil a été endommagé de n'importe quelle façon, comme par exemple si le cordon secteur ou sa fiche sont détériorés, si du liquide a coulé ou si des objets sont tombés à l'intérieur de l'appareil, si l'appareil a été exposé à la pluie ou à l'humidité, s'il ne fonctionne pas normalement ou s'il est tombé.
16. ATTENTION: Pour réduire le risque d'incendie ou de choc électrique ne pas exposer l'appareil à la pluie ou à l'humidité.



## Introduction

Congratulations on your decision to purchase Pulse, BreatheAudio's new 200-Watt Audio Amplifier. Now you can enjoy the powerful sound reinforcement of the Pulse amplifier while supplying the additional boost your audio source needs to make your home come alive with the celebration of sound. Easily incorporated with your other audio equipment, Pulse connects to the audio inputs and outputs available on most audio source equipment.

The Pulse Audio Amplifier delivers remarkably clean, robust sound to even the largest areas around your home at a very attainable price. The Pulse Audio Amplifier provides 100 Watts of clean, rich sound to two channels with features typically found in much more expensive and complex audio amplifiers. The compact half-rack layout is designed to fit side by side with the BreatheAudio Elevate Audio Distribution System, keeping the rack clean and open for additional home audio components.

Pulse offers you the flexibility of dynamic power control. By implementing the control input/output feature, the audio amplifier is triggered to power on and off by an external voltage of 3–30 volts, either AC or DC. This feature is ideal when used in conjunction with whole-house audio systems, such as the BreatheAudio Elevate, equipped with control output capable of supplying the necessary voltage trigger.

We hope that you will enjoy this new adventure in music in your home, and wish to hear any and all comments that you have about the features and overall performance of our product. As you set up and use your new Pulse system, please contact us and let us know what you think at:

Customer Service  
Toll Free #: 866-889-1019  
Email: [Customer\\_Service@breatheaudio.com](mailto:Customer_Service@breatheaudio.com)

## Pulse BA-200 Wiring Diagram

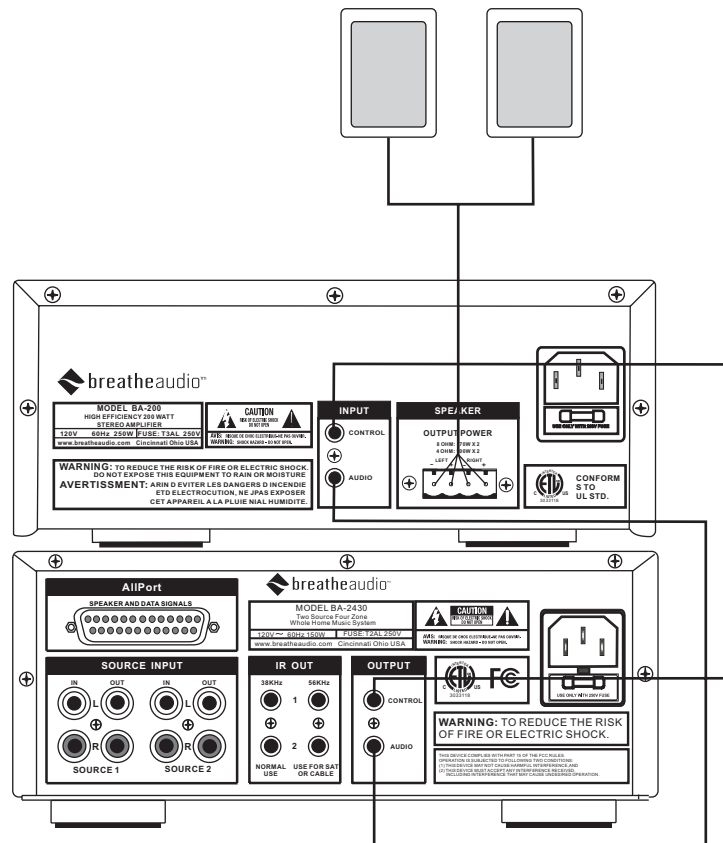
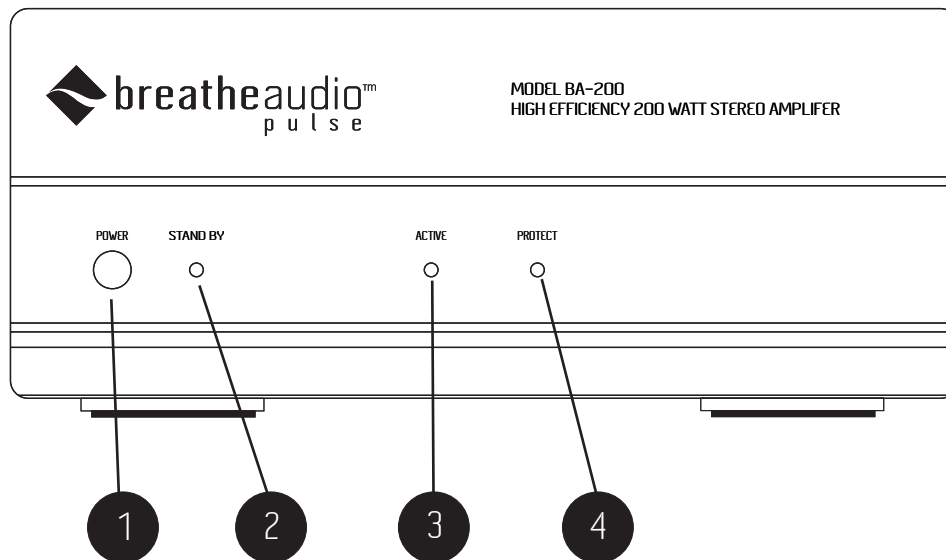
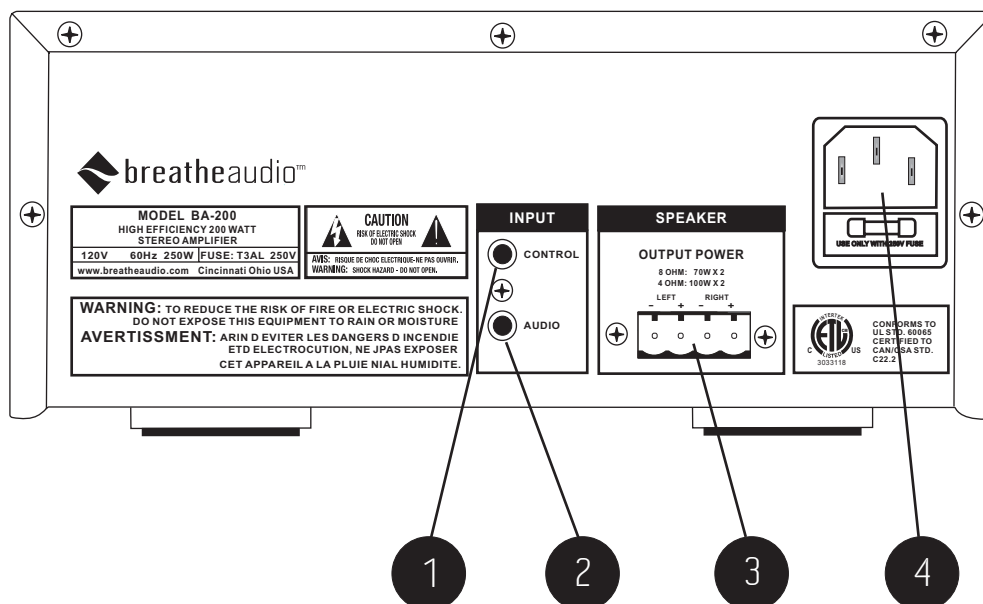


Diagram shown with the BreatheAudio Elevate Audio Distribution System



### BA-200 Front Panel

1. **Power Button:** This button manually supplies power to the amplifier
2. **STAND BY LED:** When lit, this LED (light emitting diode) indicates that the BA-200 is plugged into an AC outlet.
3. **ACTIVE LED:** When lit, this LED indicates that the amplifier is in normal amplification mode.
4. **PROTECT LED:** When lit, this LED indicates that the amplifier has overheated or is experiencing an external short in the audio signal, causing it to shut down.



### BA-200 Back Panel

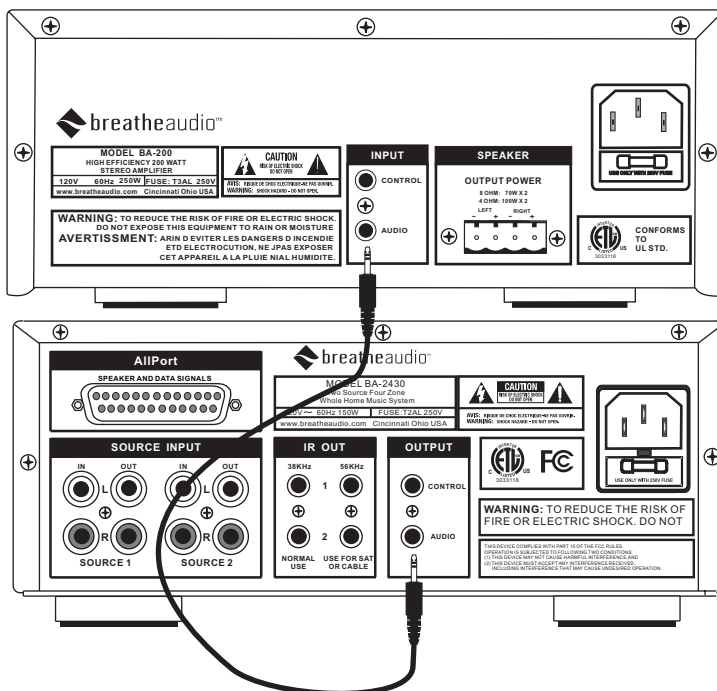
1. **Control:** This mono 3.5 mm mini jack is the voltage trigger that powers on the BA-200 when 3 – 30 volts are present.
2. **Audio:** This stereo 3.5 mm mini jack receives an audio signal from an external source such as the BreatheAudio Elevate Audio Distribution System.
3. **Speaker Output:** This amplified output provides 100 watts per channel audio output to external speakers.
4. **AC Power:** The detachable AC power cord can be plugged into any grounded AC power source.

## Installing the BA-200 Audio Amplifier

### Audio Source Inputs

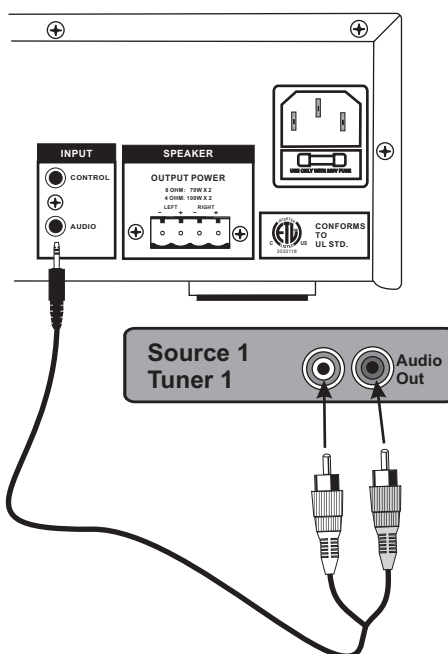
The Audio input on the back panel of the BA-200 is designed to receive a stereo audio signal from any component capable of providing a stereo line level output. The connection is a 3.5 mm stereo mini jack. The BreatheAudio™ Elevate System has a corresponding Output stereo 3.5 mm jack that is designed to work with the Audio input on the BA-200. This connection is easily made using the included stereo mini cable, fig. 1.

Fig. 1



Connecting the BA-200 to an audio source component other than the BreatheAudio Elevate System may require the use of a stereo RCA to stereo 3.5 mm mini cable, which is readily available at electronics stores. Plug the RCA cable end into the audio output of the source equipment and plug the mini jack cable end into the audio input on the back of the BA-200, fig. 2.

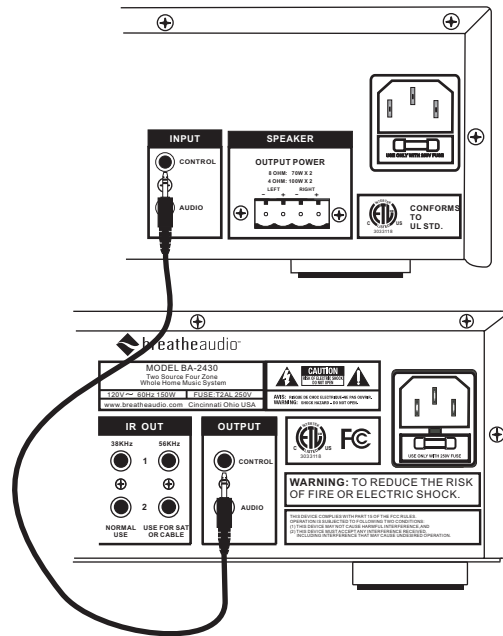
Fig. 2



## Voltage Trigger

The BA-200 is capable of being triggered to turn on using the input labeled Control. The BA-200 is designed to respond to any incoming voltage of 3 – 30 volts. Many audio components have a voltage output for this purpose. The connection is easily made using a mono cable with a 3.5 mm mini connection on both ends. A voltage trigger cable is supplied with the package. This is plugged into the voltage trigger output on the source component and into the voltage input on the BA-200. The BreatheAudio Elevate Audio Distribution System has an output labeled Control for use with the BA-200, fig. 3. By using the voltage trigger, the BA-200 power switch can be left in the on position and triggered to turn on and off automatically by the presence of a voltage from the audio source equipment.

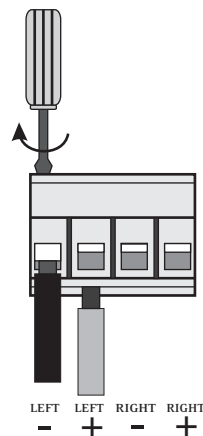
Fig. 3



## Speaker Output

The BA-200 provides 100 watts output per channel at 4 ohms and is stable down to 2 ohms. This allows it to provide an audio signal to multiple pairs of speakers in a large area. It uses a modular plug that will accept up to 14-gauge, two or four-conductor speaker wire, however 16-gauge wire is recommended. The proper polarity is Left negative, Left positive, Right negative, and Right positive, fig. 4.

Fig. 4





## BreathAudio Pulse BA-200 Specifications

Number of Channels	2
Power Output	70 Watts at 8 ohms 100 Watts at 4 ohms
Rated THD	0.08%
Frequency Response	20Hz to 20 kHz at rated power $\pm 1$ dB
Input Impedance	22 kohms
Voltage Trigger AC or DC	3 to 30 Volts
AC Power	120 VAC, 60Hz 250Watts

Power Consumption	Off, 7.2 watts
4 ohms 1 kHz	On, no signal 8.2 Watts 1/10 power, 79 Watts 1/3 power, 166 Watts Full power, 405 Watts
Line Fuse Rating	4 amp time lag
Dimensions	8.5 in W x 3.75 in H x 13.5 in L 214 mm W x 96 mm H x 340 mm L
Weight (unit)	12 lbs (4.54 kg)
Weight (shipping)	17.2 lbs (6.51 kg)





4940 Delhi Pike  
Cincinnati, OH 45238 USA  
513.347.2180  
[www.breathaudio.com](http://www.breathaudio.com)

## Free Manuals Download Website

<http://myh66.com>

<http://usermanuals.us>

<http://www.somanuals.com>

<http://www.4manuals.cc>

<http://www.manual-lib.com>

<http://www.404manual.com>

<http://www.luxmanual.com>

<http://aubethermostatmanual.com>

Golf course search by state

<http://golfingnear.com>

Email search by domain

<http://emailbydomain.com>

Auto manuals search

<http://auto.somanuals.com>

TV manuals search

<http://tv.somanuals.com>