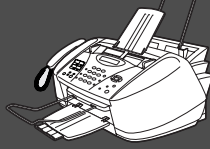


Quick Setup Guide MFC-3200C

Before you can use the MFC, you must set up the hardware and install the driver. Please read this "Setup Guide" for proper set up and installation instructions.

Step 1

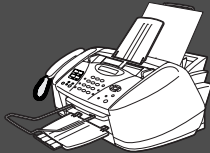


Setting Up the MFC

Step 2



Installing the Driver & Software



Setup is Complete!

For the latest driver and to find the best solution for your problem or question, access the Brother Solutions Center directly from the driver or go to <http://solutions.brother.com>. Keep this "Quick Setup Guide", User's Guide and supplied CD-ROM in a convenient place for quick and easy reference at all times.

Setting Up
the MFC

Windows®
98/98SE/Me/
2000 Professional

Windows®
XP

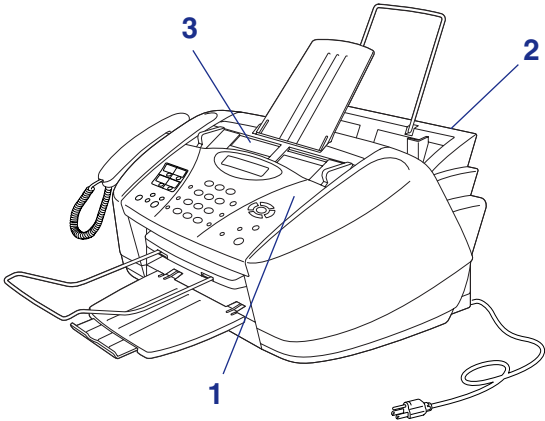
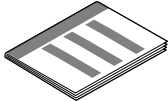

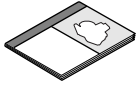


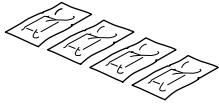

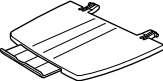
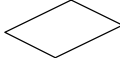
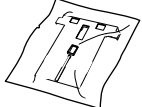

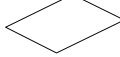





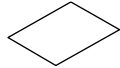
Macintosh®
OS 8.5-9.2

Macintosh®
OS X 10.1

Installing the Driver & Software

Getting Started

Carton Components

<p>MFC</p>  <p>1. Control Panel 2. Paper Tray 3. Top Cover</p>	 <p>Quick Setup Guide</p>  <p>CD-ROM</p>  <p>User's Guide</p>	
 <p>ADF Document Support</p>	 <p>Paper Support</p>	 <p>Ink Cartridges (Black, Cyan, Yellow, Magenta)</p>
 <p>ADF Document Output Support</p>	 <p>Output Paper Support</p>	 <p>Accessory Order Form</p>
 <p>Card Stock Support</p>	 <p>One Touch Labels</p>	 <p>Test Sheet (USA only)</p>
 <p>Telephone Handset</p>	 <p>Handset Curled Cord</p>	 <p>Telephone Line Cord</p>
 <p>Filter Core for USB Cable</p>	 <p>Cable Tie for USB Cable</p>	 <p>Software License Agreement</p>

Carton components may differ from one country to another.
Save all packing materials and the carton.



- You must use the appropriate USB cable.
- The interface cable is not a standard accessory. If you don't have it, please purchase an appropriate cable.
- Use only a USB interface cable that is not longer than 6 feet long (1.8 meters).

Control Panel



For the details of the control panel, see "MFC-3200C Control Panel Overview" in Chapter 1 of the User's Guide.

Table of Contents

Step 1 Setting Up the MFC

1. Removing the Protective Yellow Bar	2
2. Install Handset	2
3. Attaching the Paper Supports	3
4. Load Paper	3
5. Install Phone Line and Power Cord.....	4
6. Installing the Ink Cartridges.....	5
7. Color Block Quality and Alignment Check.....	6
8. Selecting a Receive Mode	8
9. Setting a Date and Time	8
10. Setting Your Station ID.....	9
11. Sending in the Warranty Registration and Test Sheet (USA Only).....	9

Step 2 Installing the Driver & Software

Windows®

Supplied CD-ROM (MFC Software Suite).....	10
For Windows® 98/98SE/Me/2000 Professional Users.....	12
■ For Windows® 98/98SE/Me Users	14
■ For Windows® 2000 Professional Users.....	16
For Windows® XP Users	17
■ Installation of Brother Native Drivers For Windows® XP	21

Macintosh®

For Mac® OS 8.5 - 9.2 Users.....	24
For Mac® OS X v.10.1 Users	26



Warning

Indicates warnings that must be observed to prevent possible personal injury.



Indicates cautions that must be observed to use the MFC properly or prevent damage to the MFC.



Hint

Indicates notes and useful tips to remember when using the MFC.



User's Guide

Indicates reference to the User's Guide.

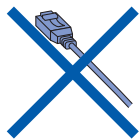
Step 1

Setting Up the MFC

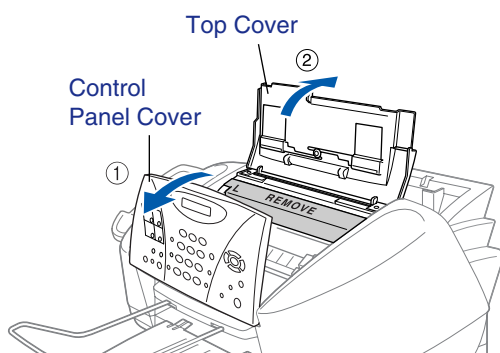
1 Removing the Protective Yellow Bar



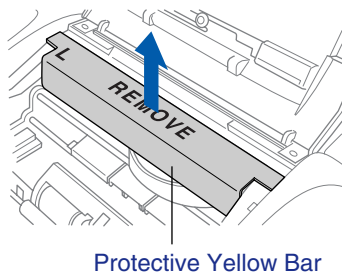
Do NOT connect the USB cable.
Connecting the USB cable is done when installing the driver.



- 1 Open the control panel cover by pulling it toward you (1), and then lift the top cover toward the back (2).



- 2 Pull the protective yellow bar out of the machine.

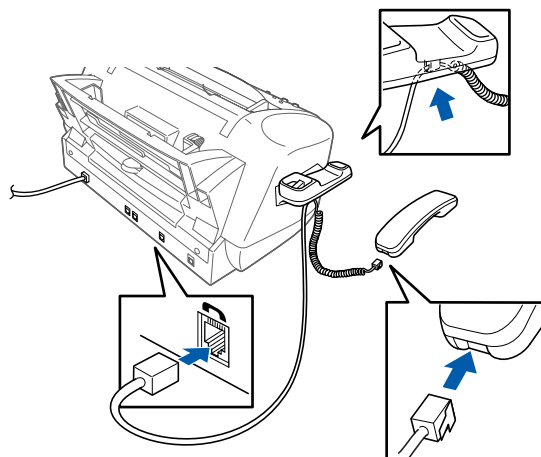


Do not throw away the protective yellow bar. You will need it in the future to transport the machine.

- 3 Close the top cover, and then close the control panel cover.

2 Install Handset

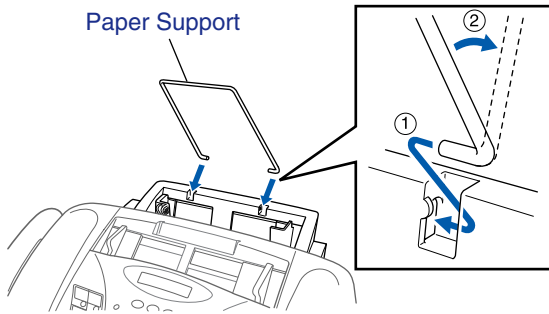
- 1 Connect the curled handset cord to the MFC and the other end to the handset.



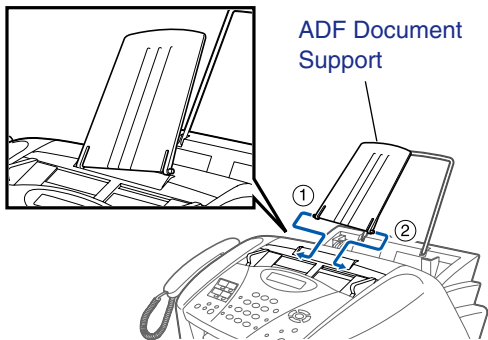
3

Attaching the Paper Supports

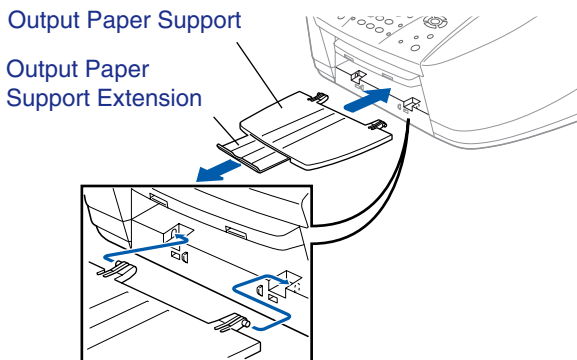
- 1 Attach the paper support to the paper tray.



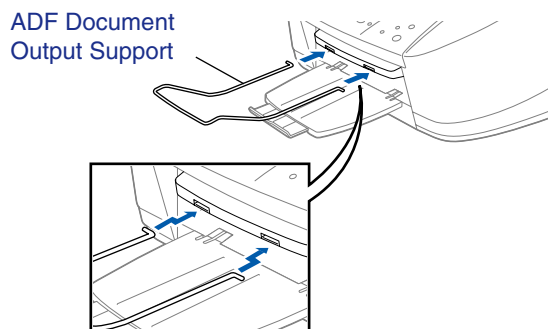
- 2 Attach the ADF document support.



- 3 Attach the output paper support to the paper output slot, and then pull out the extension.



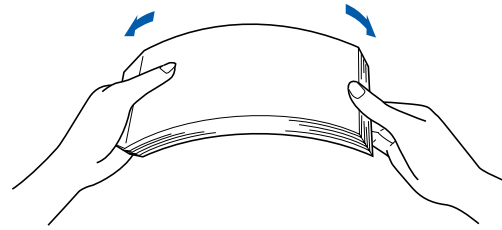
- 4 Attach the ADF document output support.



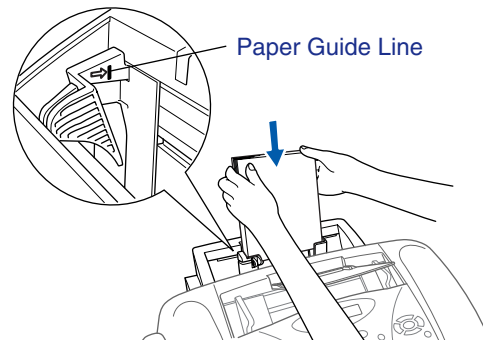
4

Load Paper

- 1 Fan the stack of paper well to avoid paper jams and misfeeds.

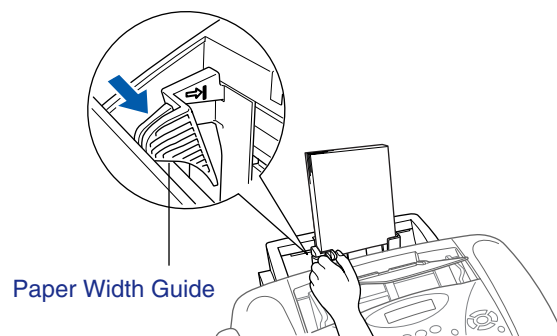


- 2 Gently insert the paper. Make sure the print side is towards you and the paper is below the maximum paper mark.



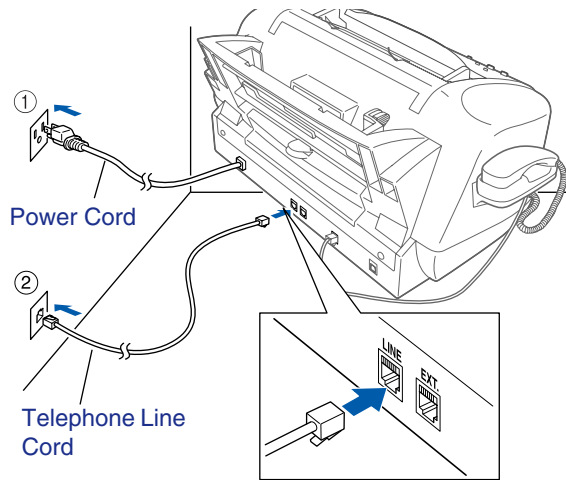
You can load up to 100 sheets of 20 lb. (75 g/m²) plain paper. For more details, see "Paper Capacity of Paper Tray" in Chapter 3 of the User's Guide.

- 3 Press and slide the paper guide to fit the paper width.



5 Install Phone Line and Power Cord

- 1 Connect the power cord.



- 2 Connect the telephone line cord. Connect one end of the telephone line cord to the jack on the MFC marked **LINE** and the other end to a modular wall jack.



Do not connect the USB cable yet.

Warning

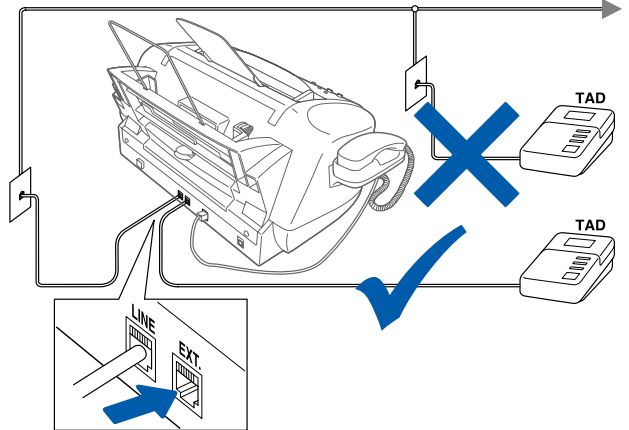
- The MFC must be grounded using a 3-prong plug.
- Since the MFC is grounded through the power outlet, you can protect yourself from potentially hazardous electrical conditions on the telephone network by keeping the power to your MFC on when you connect it to a telephone line. Similarly, you can protect yourself when you want to move your MFC by disconnecting the telephone line first and then the power cord.



If you are sharing one phone line with an external telephone answering machine, connect it as shown below.



Please select "TAD" on your machine if you have an external answering machine. For more details, see "Connecting the MFC" in Chapter 2 of the User's Guide.



6 Installing the Ink Cartridges

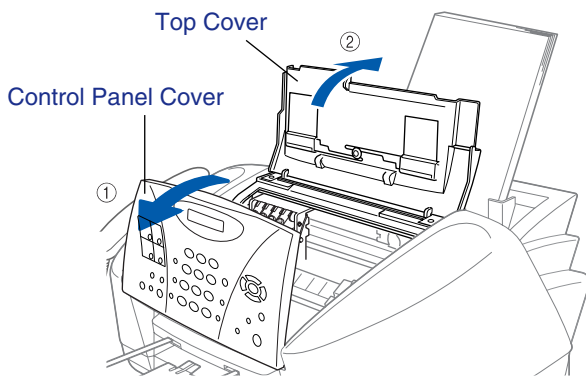
Warning

If ink gets in your eyes irrigate them with water immediately, and if irritation occurs consult a doctor.

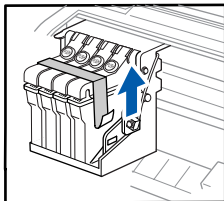
- 1 Make sure that the power is turned on. The LCD shows;

CHECK CARTRIDGE

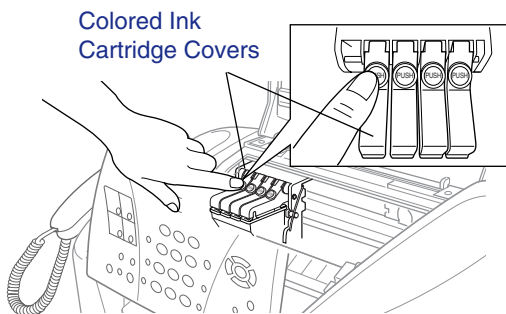
- 2 Open the control panel cover by pulling it toward you (1), then lift the top cover toward the back (2). The print heads will move to the ink replacement position.



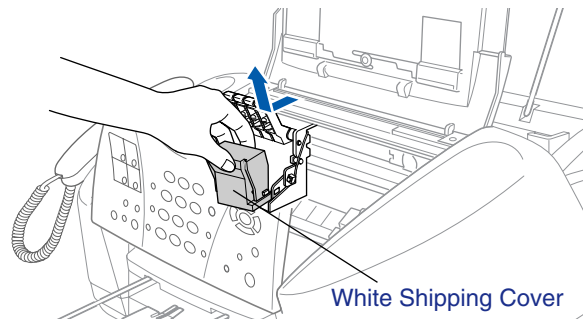
- 3 Remove the protective blue tape from the colored ink cartridge covers.



- 4 Push the four colored ink cartridge covers one at a time so they pop up.

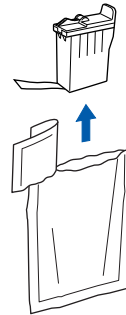


- 5 Remove the white shipping cover by pulling it towards you.

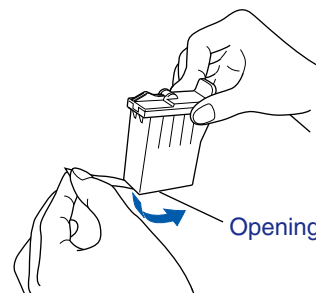


- The bottom of the white shipping cover is wet with ink that will cause stains, so wipe it clean before you place it down.
- Do not throw away the white shipping cover. You will need it when you transport the machine.

- 6 Take out black ink cartridge.



- 7 Carefully remove the sealing tape from the bottom of the ink cartridge. To prevent spilling ink and staining your hands and clothing, peel the sealing tape gently and slowly.



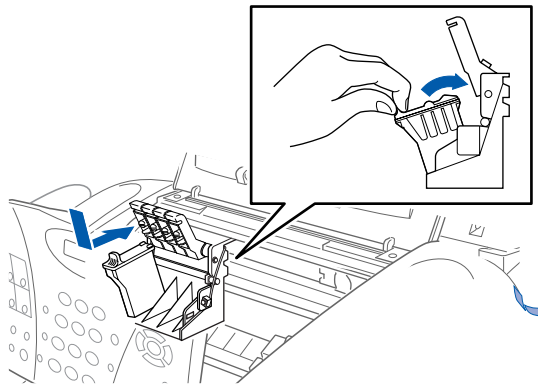
Do not touch the ink opening on the cartridge or removed tape.

To be continued

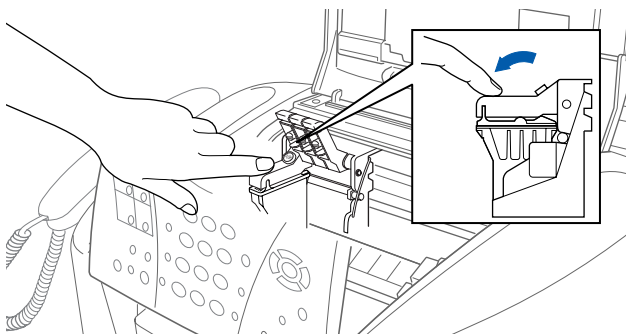
Step 1

Setting Up the MFC

- 8 Gently insert the black ink cartridge in the black ink position.



- 9 Press the cover down until it clicks.



- 10 Repeat Steps 6 to 9 to install each color ink cartridge. Match the colors of the ink cartridge covers.

- 11 Close the top cover and control panel cover. The MFC will enter a head cleaning cycle for approximately **four minutes**.

CLEANING



- **DO NOT** remove ink cartridges if you do not need to replace them. If you do so, it may reduce the ink quantity and the MFC will not know the quantity of ink left in the cartridge.
- **DO NOT** shake the ink cartridges. If you do so, the ink may spill when you take off the sealing tape. If ink stains your body or clothing, wash with soap or detergent immediately.
- **DO NOT** refill the ink cartridges. Attempting to use refilled cartridges and using incompatible inks may cause damage to the print head in this machine and such damage will not be covered by warranty. **Warranty coverage does not apply to problems caused by the use of 3rd party ink or 3rd party ink cartridges. Use only genuine Brother ink cartridges.**

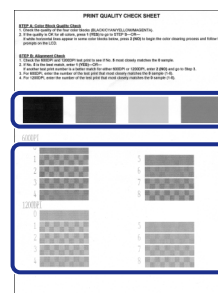
7 Color Block Quality and Alignment Check

- 1 After the cleaning cycle is finished, the LCD shows;

PRESS FAX START

- 2 Make sure the paper is loaded in the paper tray. Press the **Black Fax Start** key.

- 3 The MFC starts printing the PRINT QUALITY CHECK SHEET (only during initial ink cartridge installation).



Check in **Step A**

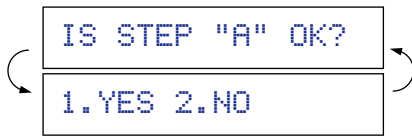
Check in **Step B**



- If you mix the colors by installing an ink cartridge in the wrong color position, you must clean the print head several times after correcting the cartridge installation and before you start printing.
- Once you open an ink cartridge, install it in the MFC and use it up within six months of installation. Use unopened ink cartridges by the expiration date written on the cartridge package.
- If **INK EMPTY** shows on the LCD after you install the ink cartridges, check to make sure the ink cartridges are installed correctly.

Step A: Color Block Quality Check

- 1 The LCD shows:



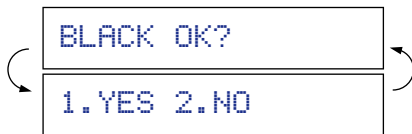
Check the quality of the four color blocks printed on the sheet.
(BLACK/CYAN/YELLOW/MAGENTA)

- 2 If the quality is OK for all colors, press the 1 key on the dial pad to go to **STEP B : Alignment Check.**

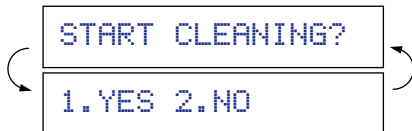
---OR---
If white horizontal lines appear in some of the color blocks, press the 2 key on the dial pad and go to 3.



- 3 The LCD asks you if the print quality is OK for each color. Press the 1 key or 2 key on the dial pad.



When you have finished selecting the 1 key (YES) or the 2 key (NO) for magenta, the LCD shows:

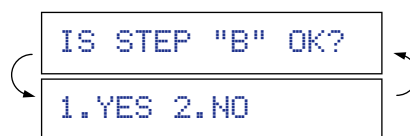


Press the 1 key (YES), and then MFC starts cleaning the colors.

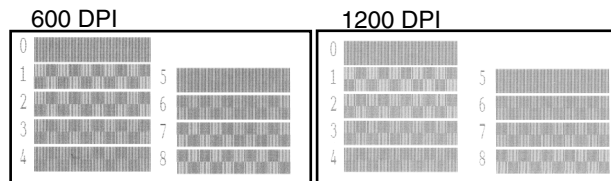
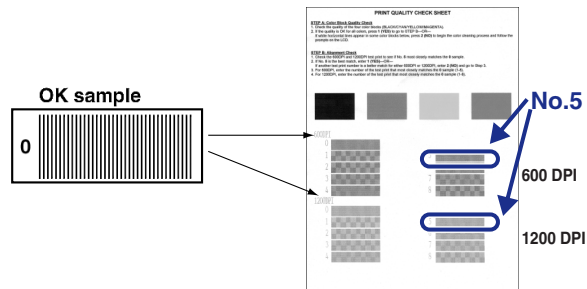
After cleaning is finished, press the **Black Fax Start** key. The MFC starts printing PRINT QUALITY CHECK SHEET again and goes back to the first step of STEP A.

Step B: Alignment Check

- 1 The LCD shows:

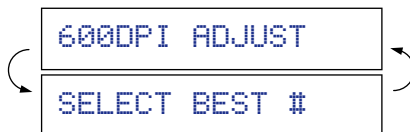


Check the 600 DPI and 1200 DPI test print to see if **No.5** most closely matches the OK sample (**No.0**). Press the 1 key if **No.5** matches it.

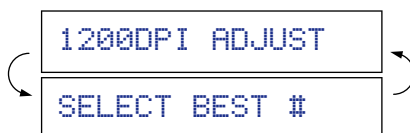


If another test print number is a better match for either 600 DPI or 1200 DPI, press the 2 key to select NO and go to 2.

- 2 For 600 DPI, select the number from 1 to 8 that most closely matches the **No.0** sample and enter it using the dial pad.



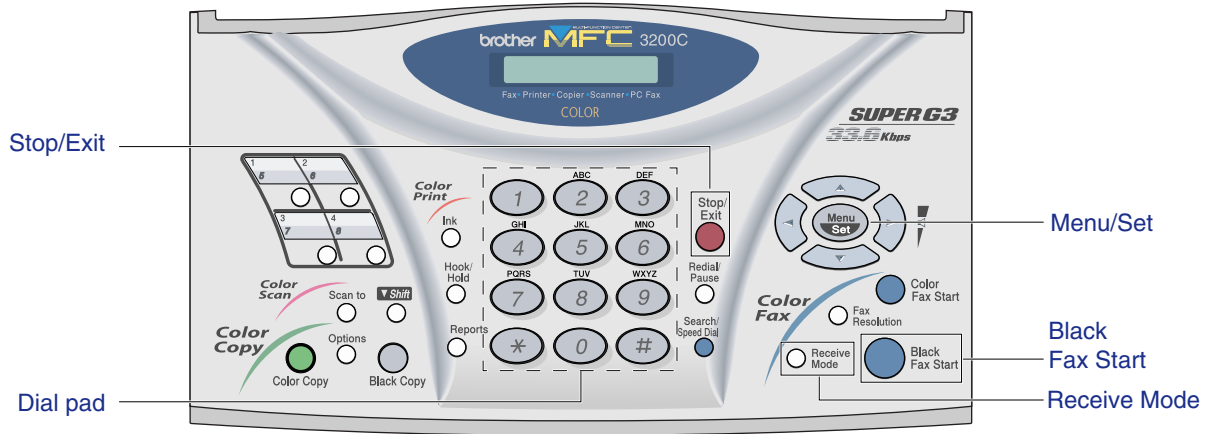
- 3 For 1200 DPI, enter the number from 1 to 8 that most closely matches the **No.0** sample.



The Quality check is now complete.

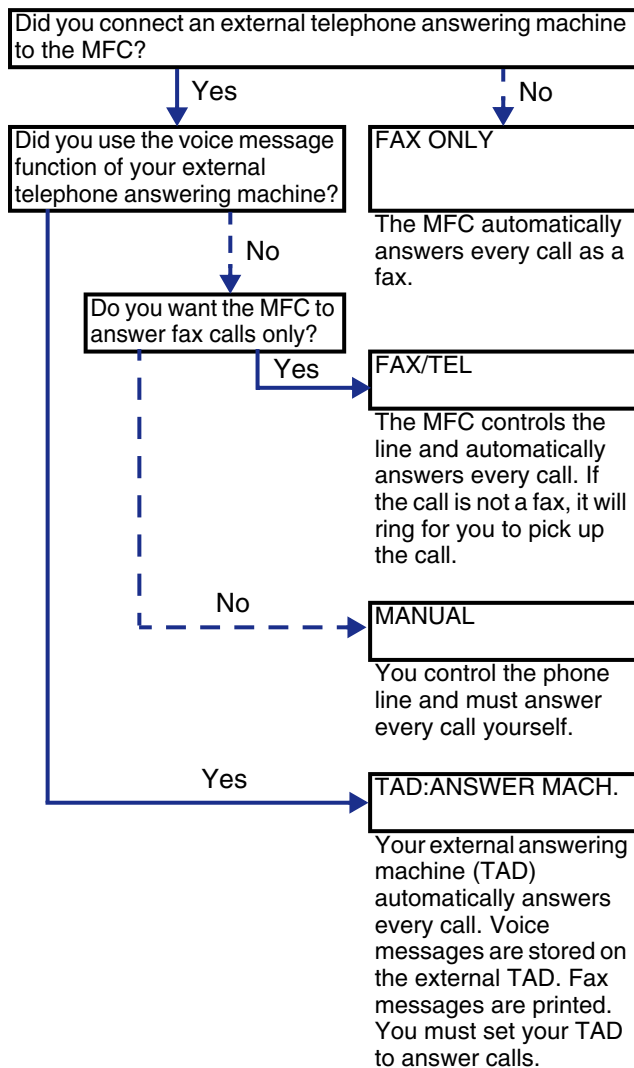
Step 1

Setting Up the MFC



8 Selecting a Receive Mode

Choose the mode which best suits your needs by pressing the **Receive Mode** key repeatedly.



For more details, see *Setup Receive* in Chapter 6 of the User's Guide.

9 Setting a Date and Time

The MFC displays the date and time, and prints it on every fax you send.

- 1 Press the **Menu/Set** key.
- 2 Press the **1** key.
- 3 Press the **3** key.
- 4 Enter the last two digits of the year on the dial pad, and then press the **Menu/Set** key.

3. DATE/TIME

YEAR: 03

(e.g. Enter **0, 3** for 2003.)

- 5 Enter the two digits for the month on the dial pad, and then press the **Menu/Set** key.

MONTH: 09

(e.g. Enter **0, 9** for September.)

- 6 Enter the two digits for the day on the dial pad, and then press the **Menu/Set** key.

DAY: 06

(e.g. Enter **0, 6**.)

- 7 Enter the time in 24-hour format on the dial pad, and then press the **Menu/Set** key.

TIME: 15:25

(e.g. Enter **1, 5, 2, 5** for 3:25 P.M.)

- 8 Press the **Stop/Exit** key.



If you want to repeat from step 1, press the **Stop/Exit** key.

10 Setting Your Station ID

You should store your name and fax number to be printed on all fax pages that you send.

- 1 Press the **Menu/Set** key.
- 1 Press the **Menu/Set** key.
- 2 Press the **1** key.
- 3 Press the **4** key.
- 4 Enter your fax number (up to 20 digits) on the dial pad, and then press the **Menu/Set** key.

4. STATION ID

FAX: 908XXXXXXXX

- 5 Enter your telephone number (up to 20 digits) on the dial pad, and then press the **Menu/Set** key.
(If your telephone number and fax number are the same, enter the same number again.)

TEL: 908XXXXXXXX

- 6 Use the dial pad to enter your name (up to 20 characters), and then press the **Menu/Set** key.

NAME: ANDY



Refer to the following chart for entering your name.

Press key	One time	Two times	Three times	Four times
2	A	B	C	2
3	D	E	F	3
4	G	H	I	4
5	J	K	L	5
6	M	N	O	6
7	P	Q	R	S
8	T	U	V	8
9	W	X	Y	Z



For more details, see "Setting the Station ID" in Chapter 5 of the User's Guide.

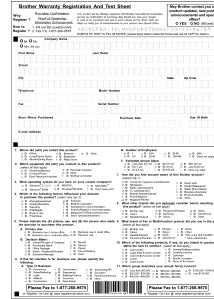
- 7 Press the **Stop/Exit** key.



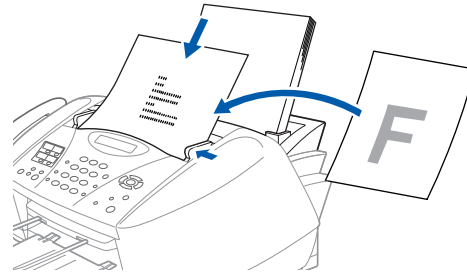
If you want to repeat from step 1, press the **Stop/Exit** key.

11 Sending in the Warranty Registration and Test Sheet (USA Only)

- 1 Fill out the Warranty Registration and Test Sheet.



- 2 Place the sheet face down in the Automatic Document Feeder.



- 3 Enter the fax number: 1-877-268-9575.
- 4 Press the **Black Fax Start** key.



You can also register your warranty on-line using the On-Line Registration link from the installation CD-ROM or go to www.registermybrother.com.

Go to Next page to install the driver

Supplied CD-ROM (MFC Software Suite)

You can find a variety of information on the CD-ROM.

Windows®



Install Software

You can install printer, PC FAX Send, scanner drivers and the various utility items, including Paper Port and TextBridge OCR.



On-Line Registration

You will be pointed to a directory on the Brother Product Registration Web Page.



On-Line Documentation

View the User's Guide and other documentation in PDF format. (Viewer included)



Brother Support

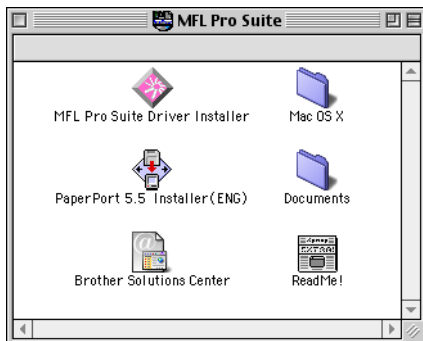
View contact information for Brother Customer Service and how to locate a Brother Authorized Service Center.



Help

Helpful hits.

Macintosh®



MFL Pro Suite Driver Installer

You can install printer, PC FAX Send, and scanner drivers for OS 8.5 - 9.2 (scanner driver available for OS 8.6 - 9.2)



Documents

View the User's Guide and other documentations in PDF format.



PaperPort 5.5 Installer (ENG)

You can install a document management application used to view scanned documents. (Mac OS X not supported.)



Mac OS X (For Native Mac OS X v.10.1 only)

You can install the printer driver and remote setup program for Mac OS X.



Brother Solutions Center

You can access the Brother Solutions Center which is a Web site offering information about your Brother product including FAQs, User Guides, Driver updates and Tips for using your machine.



ReadMe!

You can get important information and troubleshooting tips.

Follow the instructions on this page for your operating system.

Setting Up
the MFC

Windows®



For Windows® 98/98SE/Me/2000 Professional Users.....Go to page 12

Windows®
98/98SE/Me/
2000 Professional



For Windows® XP Users.....Go to page 17

Windows®
XP

Macintosh®



For Macintosh® OS 8.5 to 9.2 UsersGo to page 24

Macintosh®
OS 8.5-9.2



For Macintosh® OS X v.10.1 UsersGo to page 26

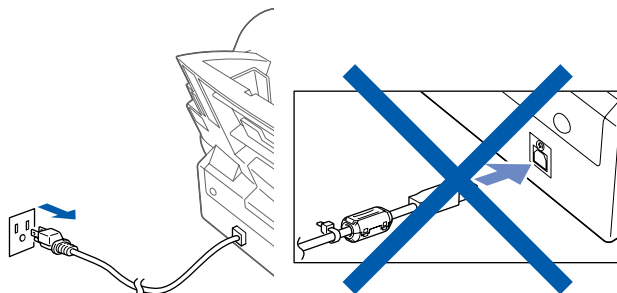
Macintosh®
OS X 10.1



For Windows® 98/98SE/Me/2000 Professional Users

Make sure that you have completed the instructions from Step 1 “Setting Up the MFC” on pages 2 to 9.

- 1 Unplug the MFC from the AC outlet and disconnect it from your computer, if you already connected an interface cable.



- 2 Turn on your computer. (For Windows® 2000 Professional, you must be logged on as the administrator.)
- 3 Insert the supplied CD-ROM into your CD-ROM drive.



- 4 The CD-ROM main menu will appear. Click **Install Software**.



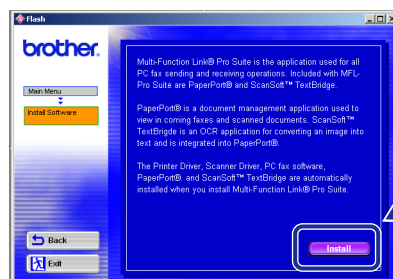
If this window does not appear, use Windows® Explorer to run the **setup.exe** program from the root directory of the Brother CD-ROM.

- 5 Click **Multi-Function Link® Pro Suite** in Main Application. *1

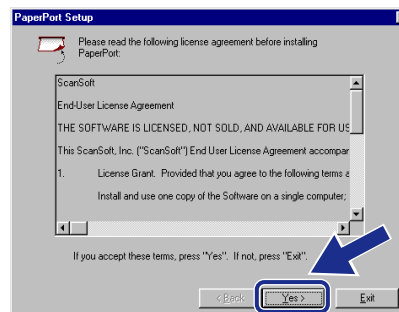


*1 Multi-Function Link® Pro Suite includes Printer Driver, Scanner Driver, ScanSoft™ PaperPort®, ScanSoft™ Text Bridge®, PC-FAX send software, Remote Setup and True Type fonts. PaperPort® is a document management application for viewing scanned documents. ScanSoft™ TextBridge®, which is integrated into PaperPort®, is an OCR application that converts an image into text and inserts it into your default word processor.

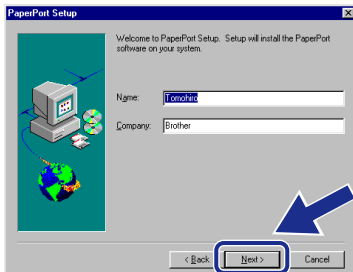
- 6 Click **Install**.



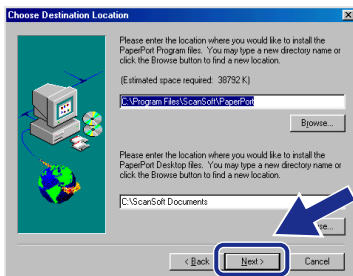
- 7 When the PaperPort® 6.5 Setup window is displayed, click.



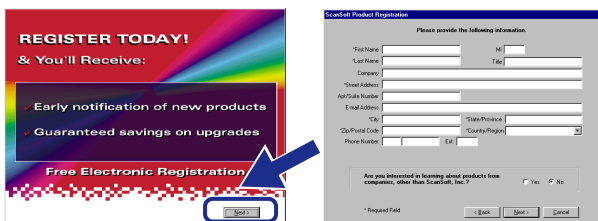
- 8 Enter your user information and click **Next**.



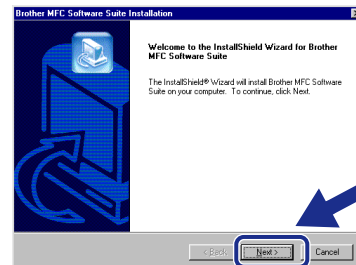
- 9 When the Choose Destination Location window displays the path where the PaperPort® files will be installed, either change or accept, and then click **Next**.



- 10 When the Register Today screen is displayed, click **Next** and follow the on screen instructions.

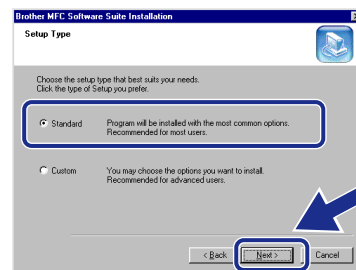


- 11 When the Brother MFL Pro Suite Installation window appears, click **Next**.^{*2}



^{*2} If an error message appears during the installation process, or if you have previously installed the MFL Pro Suite, you will first have to uninstall it. From the **Start** menu, select **Programs, Brother, Brother MFL Pro Suite, Uninstall**, and then follow the instructions on the screen.

- 12 Select **Standard**, and then click **Next**. The application files will be copied to your computer.



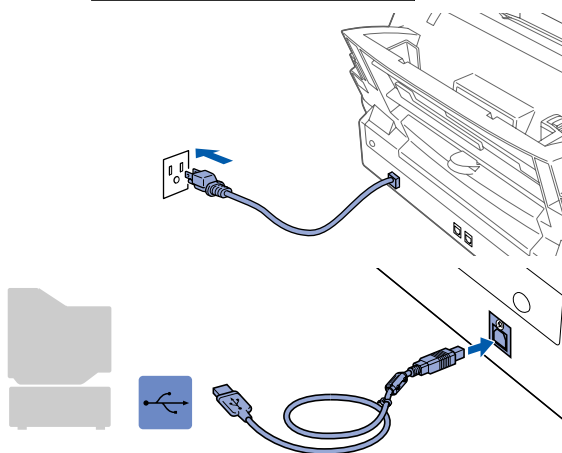
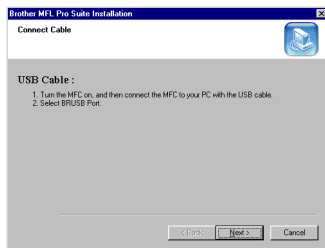
Windows® 98/98SE/Me Users → Go to page 14
Windows® 2000 Professional Users → Go to page 16

 For Windows® 98/98SE/Me/2000 Professional Users

For Windows® 98/98SE/Me Users

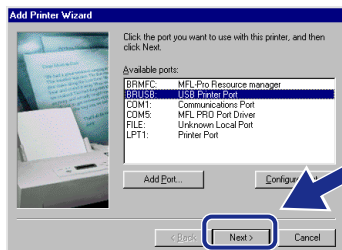
Make sure that you followed the instructions in steps 1 to 12 on pages 12 to 13.

- 13 When this screen appears, turn on the MFC by plugging in the power cord. Connect the Filter core and Cable tie to USB cable. Connect the USB interface cable to your PC, and then connect it to the MFC.

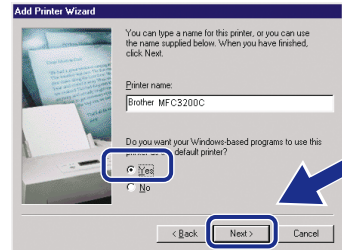


It will take a few seconds for the installation screen to appear. The installation of the Brother driver will automatically start. Follow the instructions on the screen.

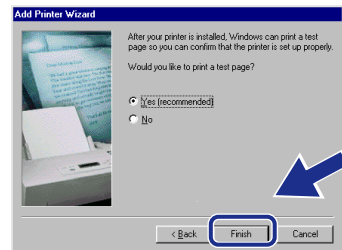
- 14 Select **BRUSB: USB Printer Port**, and then click **Next**.



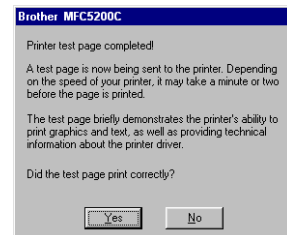
- 15 Accept the default Printer name by selecting **Yes**, and then click **Next**.



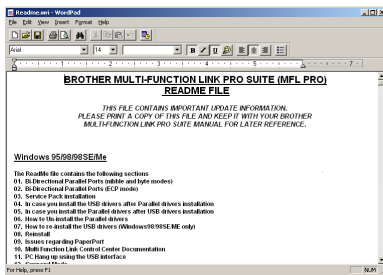
- 16 Select **Yes (recommended)**, and then click **Finish**. A test page will be printed so you can check the print quality.



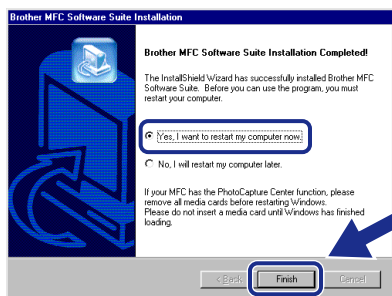
- 17 If the test page is printed correctly, click **Yes**. If you click **No**, follow the prompts on the screen to correct the problem.



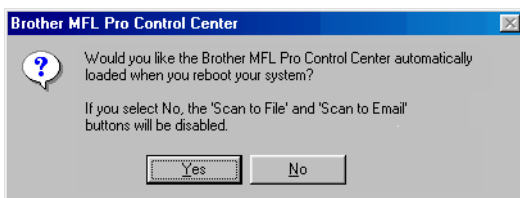
- 18 The README.WRI file will be displayed. Please read this file for troubleshooting information and then close the file to continue installation.



- 19 Click **Finish** to restart your computer.



- 20 After the computer restarts, click **Yes** to have the Control Center loaded each time Windows is started. The Control Center will appear as an icon in the task tray. If you click **No** the Scan keys on the MFC will be disabled. *3



*3 Even if you select **NO**, later you will be able to launch the Brother Control Center to use the **Scan to** key. See *AutoLoad the Brother Control Center, Chapter 14 in the On-Line Documentation (User's Guide) on the CD-ROM.*

- OK! The Brother PC fax, Printer and Scanner drivers have been installed and the installation is now complete.

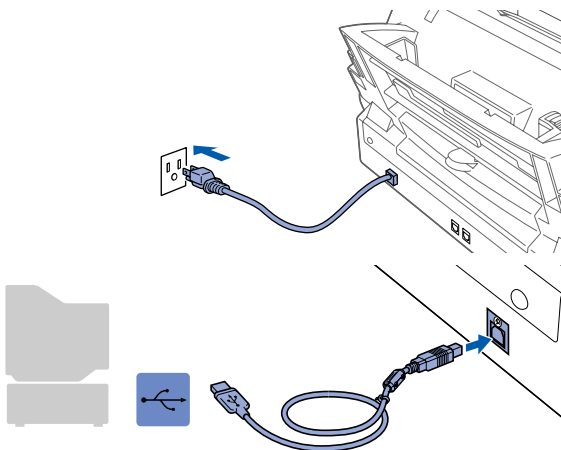
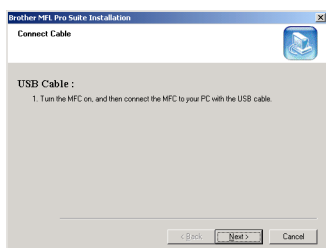


For Windows® 98/98SE/Me/2000 Professional Users

For Windows® 2000 Professional Users

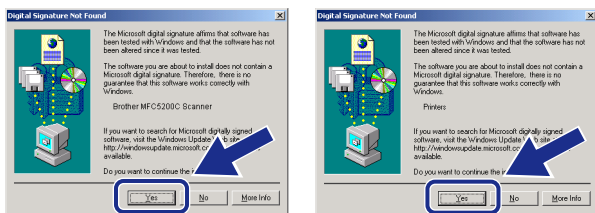
Make sure that you followed the instructions in steps 1 to 12 on pages 12 to 13.

- 13** When this screen appears, turn on the MFC by plugging in the power cord. Connect the Filter core and Cable tie to USB cable. Connect the USB interface cable to your PC, and then connect it to the MFC.

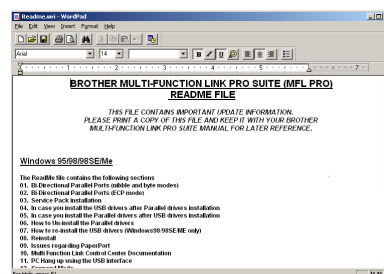


It will take a few seconds for the installation screen to appear. The installation of the Brother driver will automatically start. Follow the instructions on the screen.

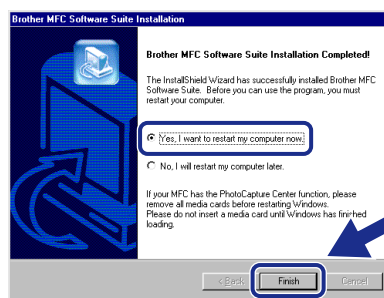
- 14** If the **Digital Signature Not Found** dialog boxes appear, click **Yes** to install the driver.



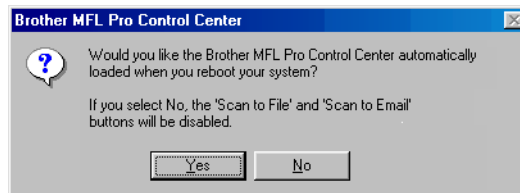
- 15** The README.WRI file will be displayed. Please read this file for troubleshooting information and then close the file to continue installation.



- 16** Click **Finish** to restart your computer.



- 17** After the computer restarts, click **Yes** to have the Control Center loaded each time Windows is started. The Control Center will appear as an icon in the task tray. If you click **No** the Scan keys on the MFC will be disabled. *3



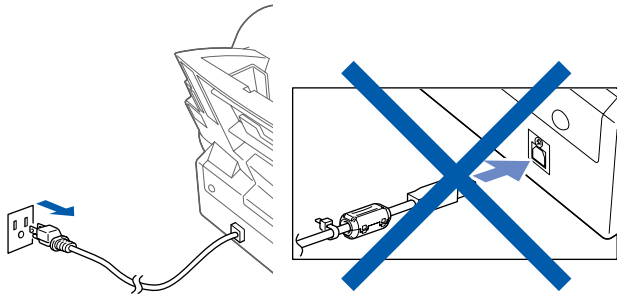
*3 Even if you select **NO**, later you will be able to launch the Brother Control Center to use the **Scan to key**. See *AutoLoad the Brother Control Center, Chapter 14 in the On-Line Documentation (User's Guide) on the CD-ROM.*

- OK!** The Brother PC fax, Printer and Scanner drivers have been installed and the installation is now complete.

For Windows® XP Users

Make sure that you have completed the instructions from Step 1 “Setting Up the MFC” on pages 2 to 9.

- 1 Unplug the MFC from the AC outlet and disconnect it from your computer, if you already connected an interface cable.

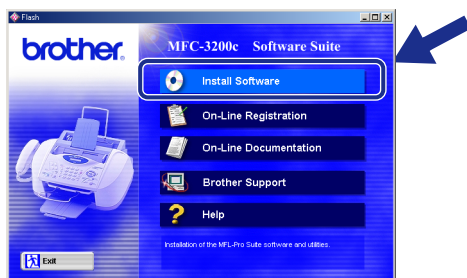


- 2 Turn on your computer. (For Windows® XP, you must be logged on as the administrator.)

- 3 Insert the supplied CD-ROM into your CD-ROM drive.

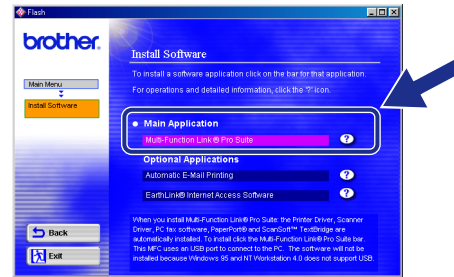


- 4 The CD-ROM main menu will appear. Click **Install Software**.



If this window does not appear, use Windows® Explorer to run the **setup.exe** program from the root directory of the Brother CD-ROM.

- 5 Click **Multi-Function Link® Pro Suite** in Main Application. *1



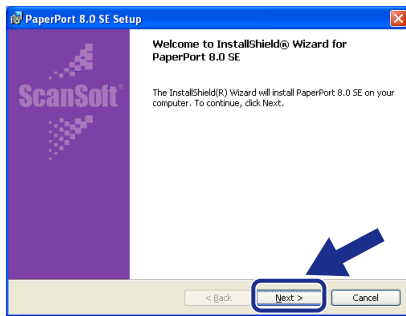
- *1 Multi-Function Link® Pro Suite includes Printer Driver, Scanner Driver, ScanSoft™ PaperPort®, ScanSoft™ Text Bridge®, PC-FAX send software, Remote Setup and True Type fonts. PaperPort® is a document management application for viewing scanned documents. ScanSoft™ TextBridge®, which is integrated into PaperPort®, is an OCR application that converts an image into text and inserts it into your default word processor.

- 6 Click **Install**.





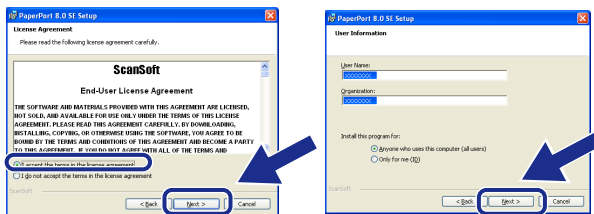
- 7 When the PaperPort® 8.0 SE Setup window is displayed, click **Next**.



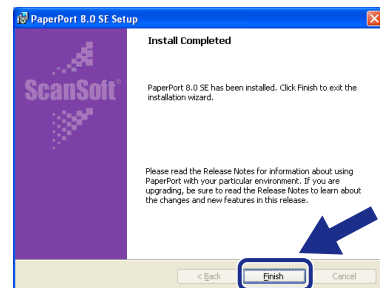
- 11 When the Registration screen is displayed, make your selection and follow the on screen instructions.



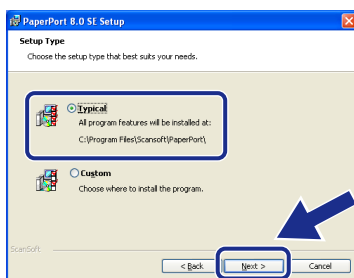
- 8 After reading and accepting the License Agreement, enter your user information and click **Next**.



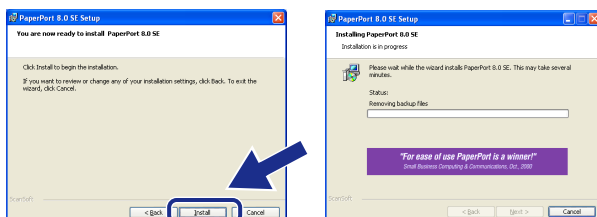
- 12 Click **Finish** to complete installation.



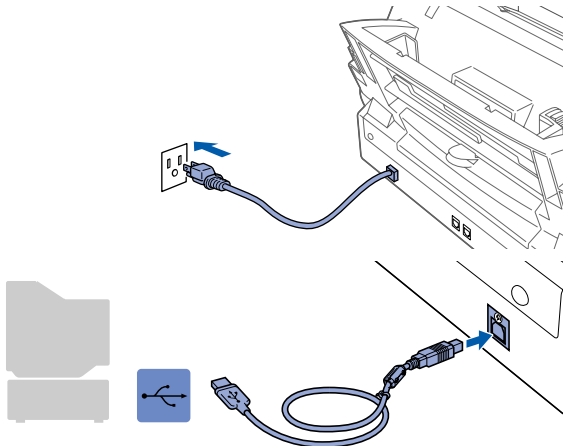
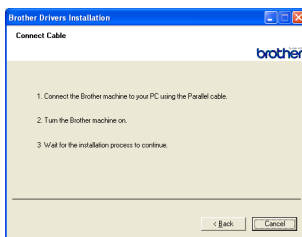
- 9 Select **Typical** and click **Next**.



- 10 Click **Install** and PaperPort® will start installing on your computer.

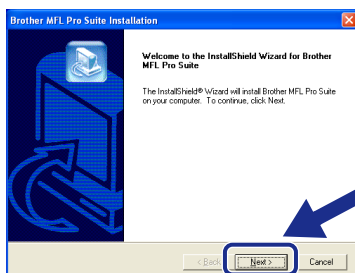


- 13 When this screen appears, turn on the MFC by plugging in the power cord. Connect the Filter core and Cable tie to USB cable. Connect the USB interface cable to your PC, and then connect it to the MFC.

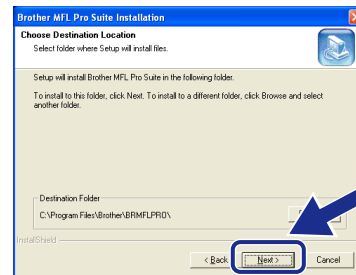


It will take a few seconds for the installation screen to appear. The installation of the Brother driver will automatically start. Follow the instructions on the screen.

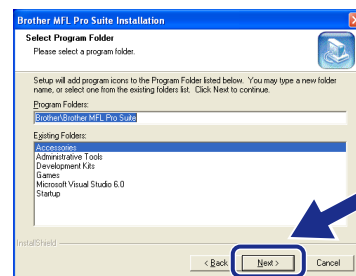
- 14 When the above screen appears, click **Next** to start the PC-FAX send and Remote Setup Installation Program.



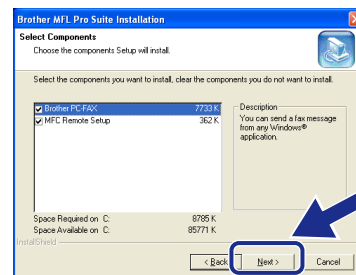
- 15 Select the folder where Setup will install the program files. If you do not wish to use the default directory, click the **Browse** button to select a new folder and then click **Next** to continue.



- 16 Select the program folder in which you wish to add the program icons, and then click **Next**.



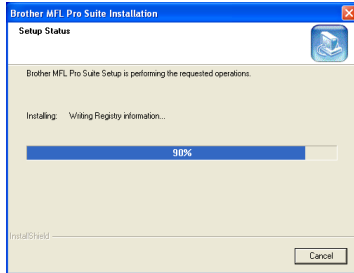
- 17 If this screen appears, select the components to install (the default gives you the most functionality), and then click **Next**.



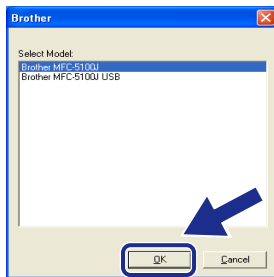
To be continued



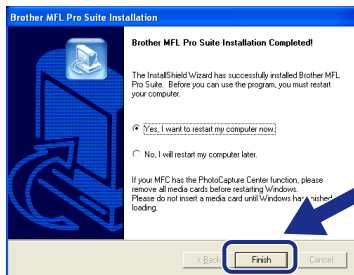
- 18 The installation process will now start.



- 19 If this screen appears, select the model of the machine which you want to use to send PC-Faxes then click **OK**.



- 20 Select "Yes" to restart your computer, and then click **Finish**.^{*2}



^{*2} If an error message appears during the installation process, or if you have previously installed the MFL Pro Suite, you will first have to uninstall it. From the **Start** menu, select **Programs, Brother, Brother MFL Pro Suite, Uninstall**, and then follow the instructions on the screen.

OK! The Brother PC fax, Printer and Scanner drivers have been installed and the installation is now complete.

Brother offers both a Windows® Logo Tested (WHQL) driver and a Brother Native Driver on the CD-ROM. The Windows® Logo Tested Driver was installed during steps 14 to 21. The Brother Native driver offers some features that are not available with the Windows® Logo Tested Driver. To install the Brother Native Driver continue with steps 22 to 30.

Installation of Brother Native Drivers For Windows® XP

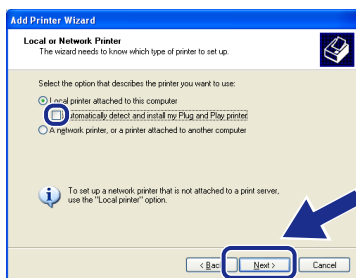
Make sure that you have completed the instructions in steps 1 to 20 on pages 17 to 20.

Make sure that **USB cable is connected between the MFC and your PC and both powered ON.**

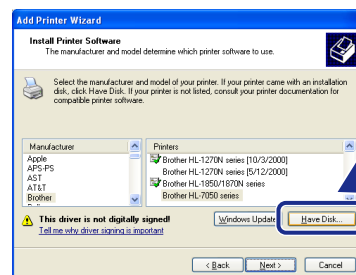
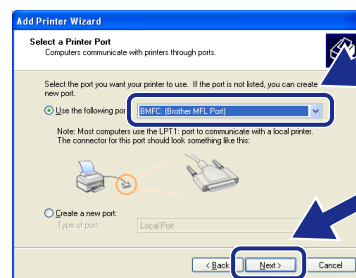
- 21 Click "Start" and select "Printers and Faxes".
- 22 Click on "Add a printer" and the Add Printer Wizard will start.
- 23 When the above screen appears, click **Next**.
- 25 Select "**USB00x (Virtual printer port for USB)**" from the pull down window for the Printer Port Selection and then click **Next**.



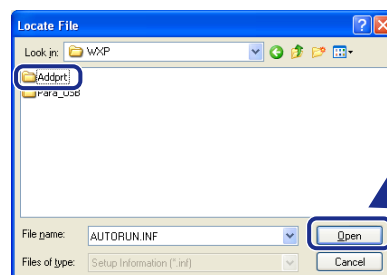
- 24 Un-check the "**Automatically detect and install the Plug and Play printer**" selection and then click **Next**.



- 26 Click on **Have Disk**.



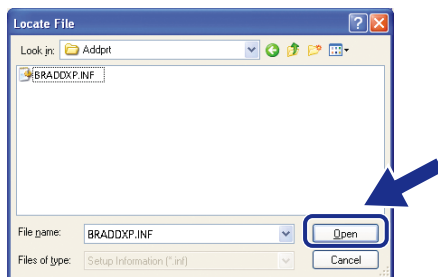
- 27 Browse the CD-ROM for the "**WXP**" folder. Highlight the **WXP** folder and click **Open**. Highlight the "**Addprt**" folder and click **Open**.



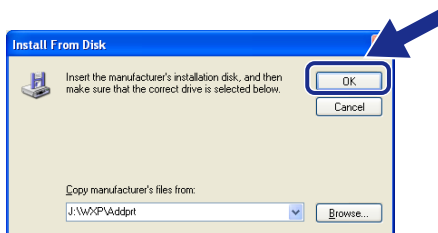
To be continued



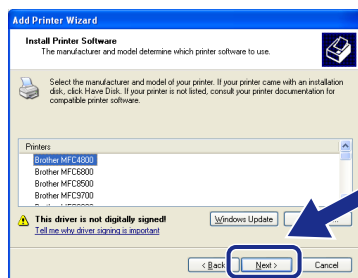
- 28 Click **Open**.



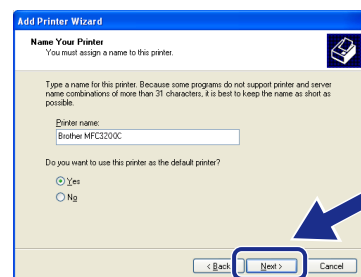
- 29 Make sure “X:\WXP\Addprt” is displayed in the window and click **OK** (X:\ is the drive letter of your CD-ROM).



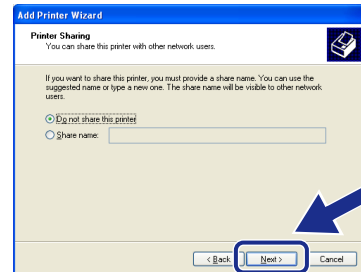
- 30 Highlight the model you are installing from the list of machines and click **Next**.



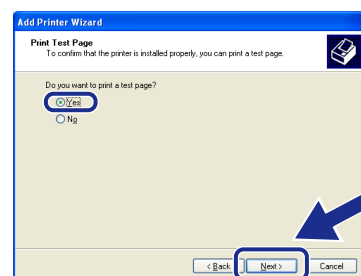
- 31 The model you are installing will be listed in the window. Select **Yes** or **No** if you want this driver to be your default printer.



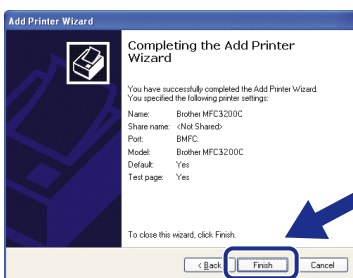
- 32 If you see the following screen, select “**Do not share this printer**” and **Next**.



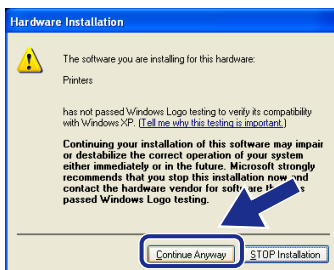
- 33 Select “**Yes**” and **Next** to print a test page.



- 34 When the above screen appears click **Finish**.



- 35 When the Windows Logo testing screen appears click **Continue Anyway**. This completes the installation of the Brother Native Driver.



- OK!** The Brother PC fax, Printer and Scanner drivers have been installed and the installation is now complete.



There will be two Brother printer drivers listed in the Printers and Faxes selection. The driver without hyphen in the model name (Ex. Brother MFC3200) is the Brother Native Driver.

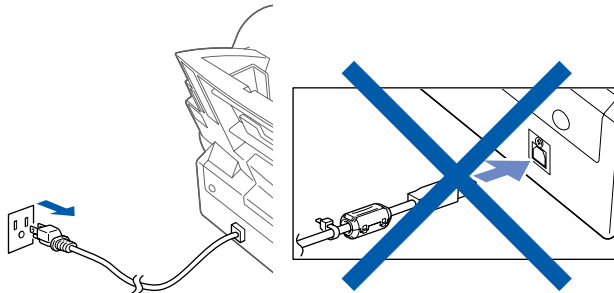
Step 2

Installing the Driver & Software

 For Mac[®] OS 8.5 - 9.2 Users

Make sure that you have completed the instructions from Step 1 “Setting Up the MFC” on pages 2 to 9.

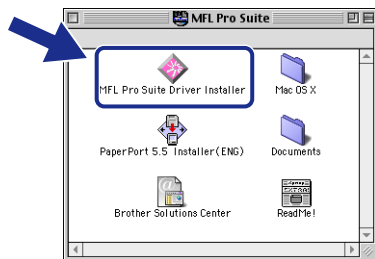
- 1 Unplug the MFC from the AC outlet and disconnect it from your Macintosh if you already connected an interface cable.



- 2 Turn on your Macintosh[®].
- 3 Insert the supplied CD-ROM into your CD-ROM drive.

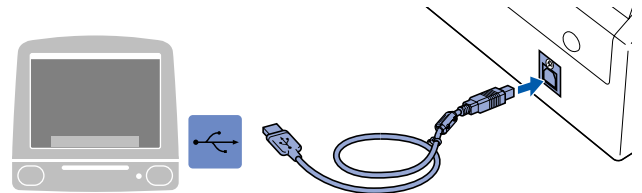


- 4 Double-click **MFL PRO Suite Driver Installer** to install the printer and scanner drivers.



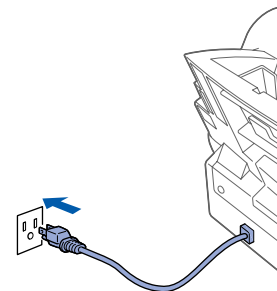
- 5 After the installation is completed, restart your Macintosh[®].

- 6 Connect the Filter core and Cable tie to USB cable. Connect the USB interface cable to your Macintosh[®], and then connect it to the MFC.

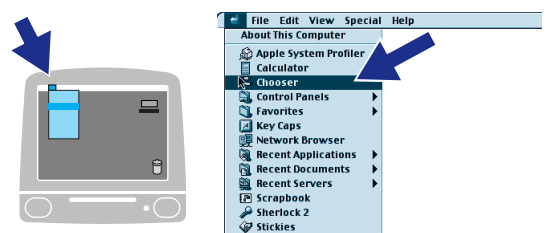


 **Do not connect the MFC to a USB port on a keyboard or a non powered USB hub.**

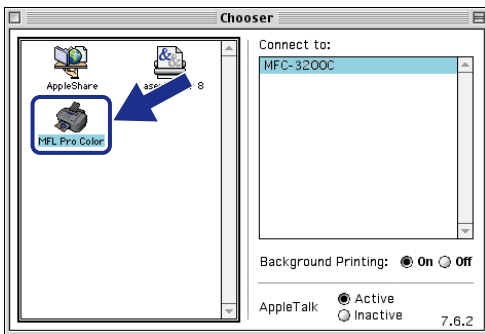
- 7 Turn on the MFC by plugging in the power cord.



- 8 From the Apple[®] menu, open the **Chooser**.

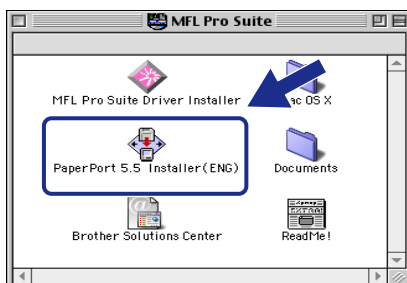


- 9 Click the **MFL Pro Color** icon you installed. On the right side of the **Chooser**, select the printer to which you want to print. Close the **Chooser**.



- OK! **The Brother PC fax, Printer and Scanner drivers have been installed and the installation is now complete.**

- 10 To install PaperPort®, double-click the **PaperPort® 5.5 Installer** icon.*1 Follow the instructions on the screen.



*1 PaperPort® is a document management application for viewing scanned documents. ScanSoft™ TextBridge®, which is integrated into PaperPort®, is an OCR application that converts an image into text and inserts it into your default word processor.

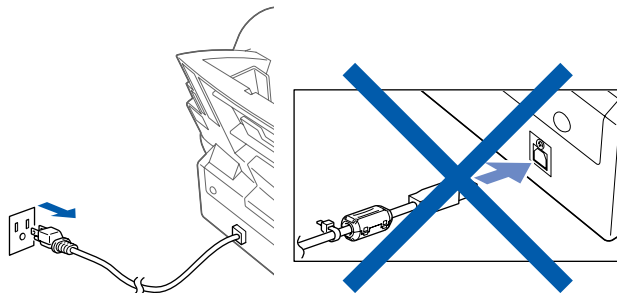
Step 2

Installing the Driver & Software

For Mac® OS X v.10.1 Users

Make sure that you have completed the instructions from Step 1 “Setting Up the MFC” on pages 2 to 9.

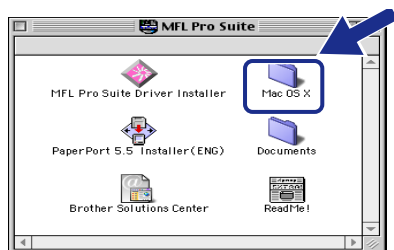
- 1 Unplug the MFC from the AC outlet and disconnect it from your Macintosh if you already connected an interface cable.



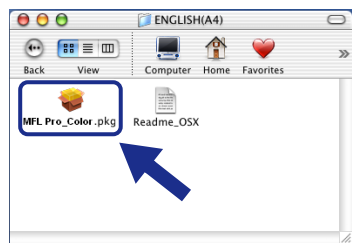
- 2 Turn on your Macintosh®.
- 3 Insert the supplied CD-ROM into your CD-ROM drive.



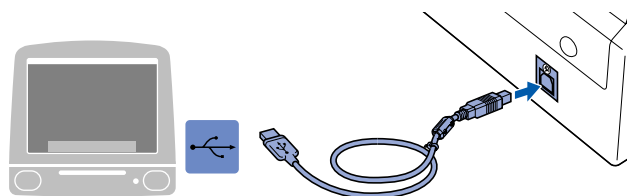
- 4 Double-click the **Mac OS X** folder to install the printer driver and Remote Setup program.



- 5 Double-click the **MFL Pro_Color.pkg** icon. Follow the instructions on the screen.

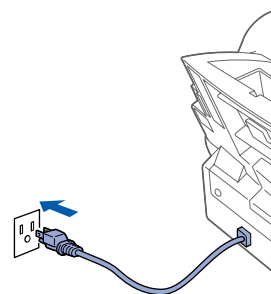


- 6 Connect the Filter core and Cable tie to USB cable. Connect the USB interface cable to your Macintosh®, and then connect it to the MFC.

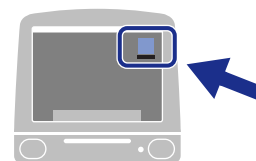


Do not connect the MFC to a USB port on a keyboard or a non powered USB hub.

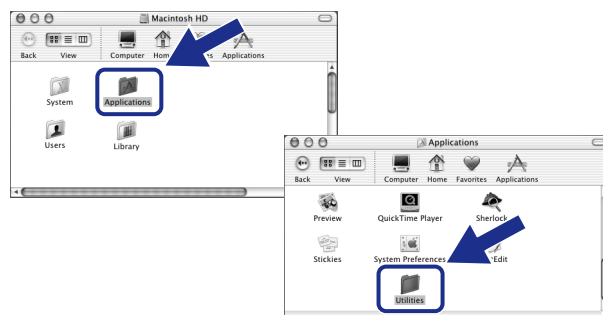
- 7 Turn on the MFC by plugging in the power cord.



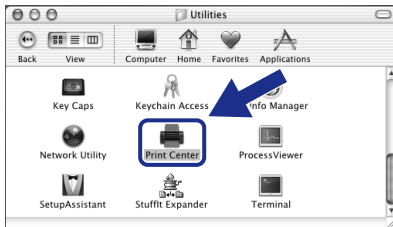
- 8 Open the **Macintosh HD** icon.



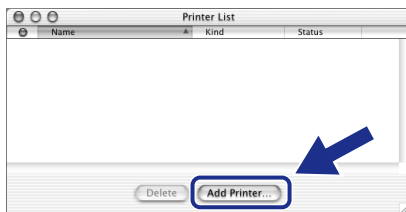
- 9 Open the **Applications** folder. Open the **Utilities** folder.



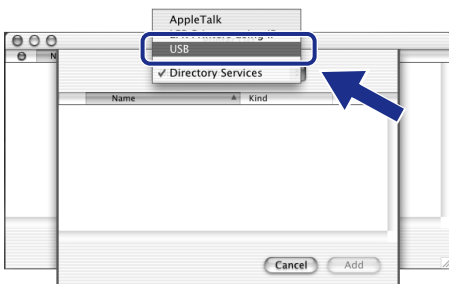
- 10 Open the **Printer Center** icon.



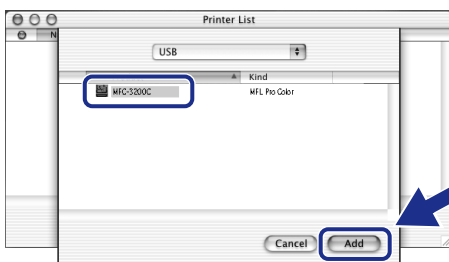
- 11 Click **Add Printer...**



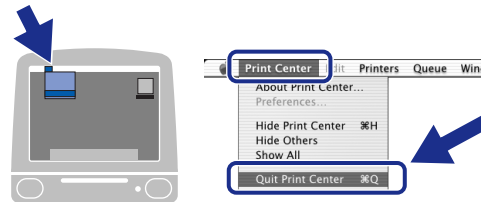
- 12 Select **USB**.



- 13 Select **MFC-3200C**, and then click the **Add**.



- 14 Select **Quit Printer Center** from the **Printer Center** menu.



- OK! The **Brother Printer driver** and **Remote Setup Program** have been installed and the installation is now complete.

Trademarks

The Brother logo is a registered trademark of Brother Industries, Ltd.

Brother is a registered trademark of Brother Industries, Ltd.

Multi-Function Link and PhotoCapture Center are a registered trademark of Brother Industries, Ltd.

© Copyright 2002 Brother Industries, Ltd. All rights reserved.

Windows and Microsoft, MS-DOS, Excel and Word are registered trademarks of Microsoft in the U.S. and other countries.

Macintosh and QuickDraw are a registered trademarks and iMac and iBook are trademarks of Apple Computer, Inc.

PaperPort and TextBridge are registered trademarks of ScanSoft, Inc.

IBM, IBM PC and Proprinter are registered trademarks of International Business Machines Corporation.

Hammermill and JetPrint PHOTO are a registered trademark of International Paper.

Smart Media is a trademark of Toshiba Corporation.

Compact Flash is a trademark of SanDisk Corporation.

Memory Stick is a trademark of Sony Corporation.

Each company whose software title is mentioned in this manual has a Software License Agreement specific to its proprietary programs.

All other brand and product names mentioned in this manual are registered trademarks of their respective companies.

Compilation and Publication

Under the supervision of Brother Industries Ltd., this manual has been compiled and published, covering the latest product descriptions and specifications.

The contents of this manual and the specifications of this product are subject to change without notice.

Brother reserves the right to make changes without notice in the specifications and materials contained herein and shall not be responsible for any damages (including consequential) caused by reliance on the materials presented, including but not limited to typographical and other errors relating to the publication.

This product is designed for use in a Professional Environment.

brother®

Free Manuals Download Website

<http://myh66.com>

<http://usermanuals.us>

<http://www.somanuals.com>

<http://www.4manuals.cc>

<http://www.manual-lib.com>

<http://www.404manual.com>

<http://www.luxmanual.com>

<http://aubethermostatmanual.com>

Golf course search by state

<http://golfingnear.com>

Email search by domain

<http://emailbydomain.com>

Auto manuals search

<http://auto.somanuals.com>

TV manuals search

<http://tv.somanuals.com>