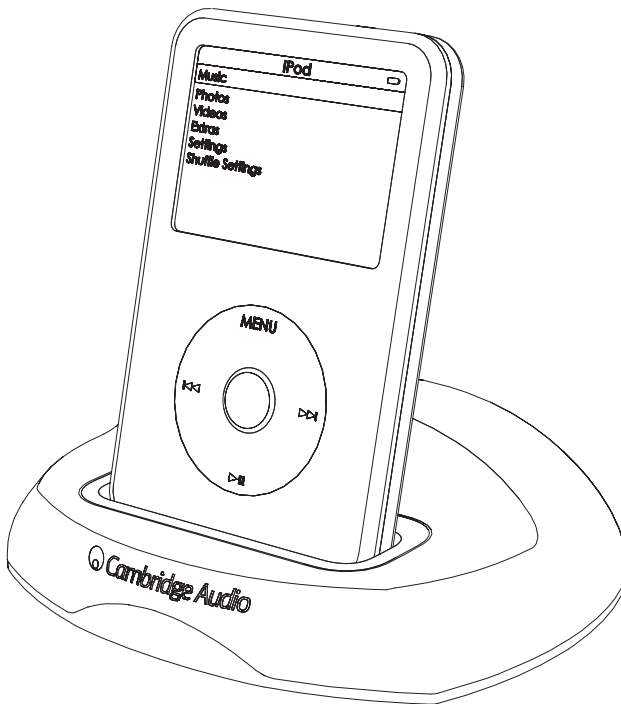




iD10

Docking Station for Apple® iPod™ User's manual



Safety precautions

Checking the Power Supply Rating

For your own safety please read the following instructions carefully before attempting to connect this unit to the mains.

Check that the power supply unit indicates the correct supply voltage. If your mains supply voltage is different, consult your dealer.

This unit is designed to operate only on the supply voltage and type that is indicated on the power supply unit. Connecting to other power sources may damage the unit.

This equipment must be switched off when not in use. To reduce the risk of electric shock, do not disassemble any part of the unit. There are no user serviceable parts inside. Refer servicing to qualified service personnel.



The lightning flash with the arrowhead symbol within an equilateral triangle is intended to alert the user to the presence of un-insulated 'dangerous voltage' within the product's enclosure that may be of sufficient magnitude to constitute a risk of electric shock to persons.



The exclamation point within an equilateral triangle is intended to alert the user to the presence of important operating and maintenance instructions in the service literature relevant to this appliance.



The crossed-out wheeled bin is the European Union symbol for indicating separate collection for electrical and electronic equipment. This product contains electrical and electronic equipment which should be reused, recycled or recovered and should not be disposed of with unsorted regular waste. Please return the unit or contact the authorised dealer from whom you purchased this product for more information.

Approvals



This product complies with European Low Voltage (73/23/EEC) and Electromagnetic Compatibility (89/336/EEC) Directives when used and installed according to this instruction manual. For continued compliance only Cambridge Audio accessories should be used with this product and servicing must be referred to qualified service personnel.

NOTE: THE MANUFACTURER IS NOT RESPONSIBLE FOR ANY RADIO OR TV INTERFERENCE CAUSED BY UNAUTHORIZED MODIFICATIONS TO THIS EQUIPMENT. SUCH MODIFICATIONS COULD VOID THE USER AUTHORITY TO OPERATE THE EQUIPMENT.

This equipment has been tested and found to comply with the limits for a Class B digital device, pursuant to Part 15 of the FCC Rules. These limits are designed to provide reasonable protection against harmful interference in a residential installation. This equipment generates, uses and can radiate radio frequency energy and, if not installed and used in accordance with the instructions, may cause harmful interference to radio communications. However, there is no guarantee that interference will not occur in a particular installation.

If this equipment does cause harmful interference to radio or television reception, which can be determined by turning the equipment off and on, the user is encouraged to try to correct the interference by one or more of the following measures:

- Re-orient or relocate the receiving antenna.
- Increase the separation between the equipment and receiver.
- Connect the equipment into an outlet on a circuit different from that to which the receiver is connected.
- Consult the dealer or an experienced radio/TV technician for help.

Important safety instructions

Please take a moment to read these instructions before installing your iD10, as they will enable you to get the best performance and prolong the life of the unit. We advise you follow all instructions, heed all warnings and keep the instructions for future reference.

Positioning

Choose the installation location carefully. Avoid placing it in direct sunlight or close to a source of heat. Also avoid locations subject to vibration and excessive dust, cold or moisture. Do not place the unit on an unstable surface or shelf. The unit may fall, causing serious injury to a child or adult as well as serious damage to the product. Do not place other equipment on top of the unit. Do not install near any heat sources such as radiators, heat registers, stoves, or other unit (including amplifiers) that produce heat. No naked flame sources, such as lighted candles, should be placed on the unit.

Use only with cart, stand, tripod, bracket, or table specified by the manufacturer, or sold with the unit. When a cart is used, use caution when moving the cart/unit combination to avoid injury from tip-over. This unit must be installed on a sturdy, level surface. Do not place in a sealed area such as a bookcase or in a cabinet.



WARNING - To reduce the risk of fire or electric shock, do not expose this unit to rain or moisture. This unit must not be used near water or exposed to dripping or splashing water or other liquids. No objects filled with liquid, such as vases, shall be placed on the unit. In the event, switch off immediately, disconnect from the mains supply and contact your dealer for advice. The unit can be used in moderate climate.

Electronic audio components have a running in period of around a week (if used several hours per day). This will allow the new components to settle down, the sonic properties will improve over this time.

Grounding and polarisation

Do not defeat the safety purpose of the polarized or grounding type plug. A polarized plug has two blades with one wider than the other. A grounding type plug has two blades and a third grounding prong. The wide blade or third prong are provided for your safety. If the provided plug does not fit your outlet, consult an electrician for replacement of the obsolete outlet.

Power sources

The unit should be operated only from the type of power source indicated on the marking label. If you are not sure of the type of power-supply to your home, consult your product dealer or local Power Company.

Power cord protection

The unit must be installed in a manner that makes disconnection of the power supply from the mains socket outlet (or appliance connector from the rear of the unit) possible. Where the power supply is used as the disconnect device, the disconnect device shall remain readily operable. Protect the power cord from being walked on or pinched particularly at plugs, convenience receptacles, and the point where they exit from the unit.

Be sure to insert each power cord securely. To prevent hum and noise, do not bundle interconnect leads with the power cord or speaker leads.

Overloading

Do not overload wall outlets or extension cord as this can result in a risk of fire or electric shock. Overloaded AC outlets, extension cords, frayed power cords, damaged or cracked wire insulation, and broken plugs are dangerous. They may result in a shock or fire hazard.

Lightning

For added protection during a thunderstorm, or when it is left unattended and unused for long period of time, unplug the unit from the wall outlet and disconnect the antenna or cable system. This will prevent damage to the unit from lightning and power-line surges.

Cleaning

To clean the unit, wipe its case with a dry, lint-free cloth. Do not use any cleaning fluids containing alcohol, ammonia or abrasives. Do not spray an aerosol at or near the unit. The use of a lens cleaning disc at least once a month can also prolong unit life.

Attachments

Do not use attachments not recommended by your dealer as they may cause harm to the unit. Only use the specified attachments/accessories with this unit.

Servicing

Refer all servicing to qualified service personnel. Servicing is required when the apparatus has been damaged in any way, such as power-supply cord or plug is damaged, liquid has been spilled or objects have fallen into the apparatus, the apparatus has been exposed to rain or moisture, does not operate normally, or has been dropped. These units are not user serviceable, never attempt to repair, disassemble or reconstruct the unit if there seems to be a problem. A serious electric shock could result if this precautionary measure is ignored. In the event of a problem or failure, please contact your dealer.

Contact the service department should any of these conditions occur:

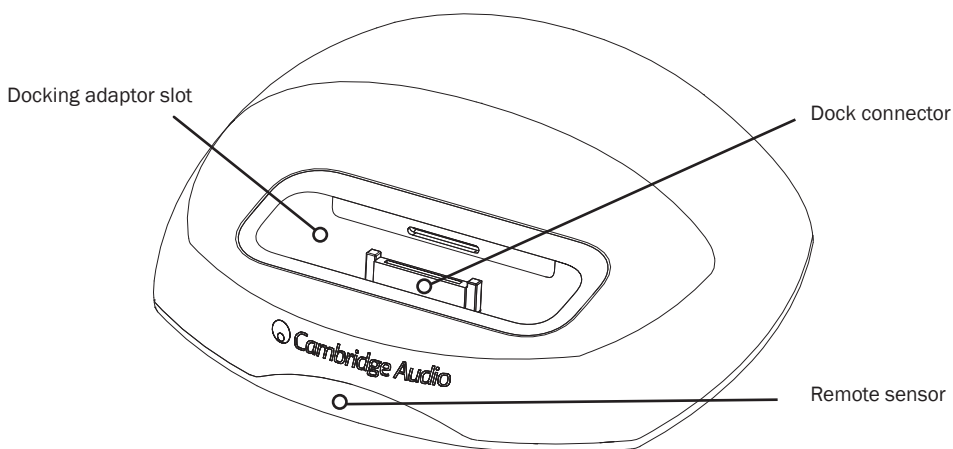
- When the power-supply cord or plug is damaged.
- If liquid has been spilled, or objects have fallen into the unit.
- If the unit has been exposed to rain or water.
- If the unit does not operate normally after following the operation instructions, adjust only those controls that are covered by the operation instructions.
- If the unit has been dropped or damaged in any way.
- When the unit exhibits a distinct negative change in performance.

iD10



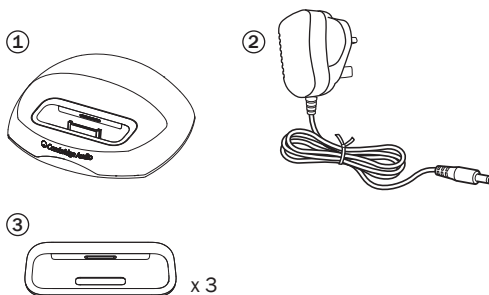
Docking Station for Apple® iPod™ User's manual

This Docking Station enables you to get the best sound quality from your iPod by both allowing you to charge the iPod battery and play music from your iPod on your home stereo system.



Contents

- ① 1 x Docking station
- ② 1 x UK power supply
- ③ 3 x Docking adaptors



Dock adaptors

The iD10 comes with 3 types of docking adaptors. Insert the dock adaptor that fits your iPod model, then plug in your iPod.

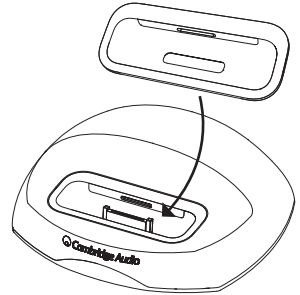
iPod models supported

iPod Nano (2GB/4GB and 8GB)

iPod (20GB/40GB and U2 Special Edition)

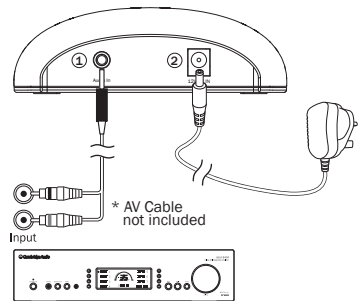
iPod with colour display (40GB/60GB and 80GB)

Note: The docking station does not support iPod Shuffle.



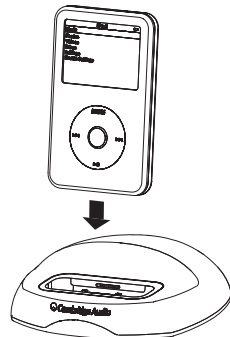
Connecting your iD10

- ① **Audio output**
Connect your docking station to your amplifier/stereo system (3.5mm to Dual Phono - not included).
- ② **12V DC input**
Connect your docking station to the supplied AC adapter.
- ③ **Docking adaptor**
Fit the correct docking adaptor for your type of iPod.



Using your iD10

1. Plug your iPod into the docking station.
2. Turn on your amplifier/stereo, selecting the correct input.
3. Press Play on iPod/remote control.

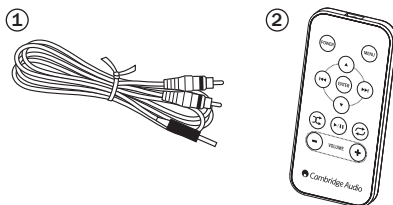


Note: The iD10 is also compatible with Cambridge Audio Azur Navigator remote controls supplied with our products which support 'iPod Control' (currently this is almost any remote in our Azur range).

iD10 Accessory Pack (Not included, sold separately)

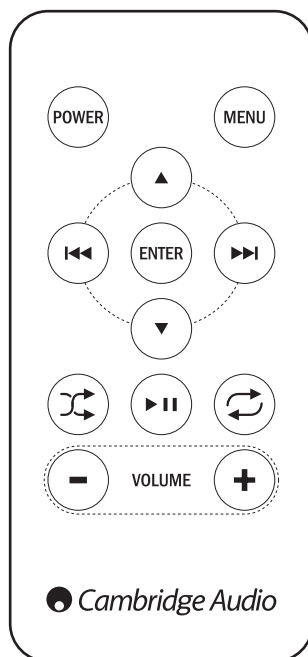
An iD10 Accessory Pack (C3037) is available for purchase from your Cambridge Audio dealer. The pack consists of:

- 1 Audio Cable (3.5mm to Dual Phono/RCA stereo mini-jack)
- 2 Remote Control



Remote control

- POWER**
Press to switch the iPod on/off.
- Menu**
Press to go back to the previous menu.
- Navigate**
Press to navigate up/down. Press ENTER to confirm selection.
- Skip**
Press to select previous/next song. Hold to fast-forward/rewind song.
- Enter**
Press to choose a menu item.
- Shuffle**
Press to select song shuffle mode. Press again to cancel.
- Play/Pause**
Press to play/pause playback.
- Repeat**
Press to select song repeat mode. Press again to cancel.
- Volume**
Press to control the iD10's built-in volume control. **Note:** This controls the iD10 output volume, not the iPod volume.



Troubleshooting

Why is my remote control not responding?

For the remote control to work as intended with your iPod, it must be running the most updated Apple software. If you need to upgrade, simply visit the Apple iPod website and follow the instructions there for a free download. Go to:

<http://www.apple.com/iPod/download/>

If it does not work, please unplug the power cable for 1 minute, then plug it back in. This resets the system.

Why is there no sound?

Check if your iPod is correctly docked in the Docking Station.

Check if your iPod is playing.

Check if your receiver is turned on, the right input source is selected and the volume is turned up.

Check if the cable and DC adaptor are firmly and correctly connected.

Why doesn't the Docking Station charge my iPod's battery?

Check if your iPod is correctly docked in the Docking Station.

Check if your AC/DC adaptor is firmly plugged in the dock and the power socket outlet.

Why does my remote control not function?

Check if your iPod is correctly docked in the Docking Station.

Try the remote from different locations and see if it works. Strong fluorescent lighting or other room conditions may cause the problem.

Make sure nothing blocks the infrared (IR) signal path between the remote and your Docking Station.

Check the batteries are correctly inserted and not discharged.

Specifications

Inputs/Outputs

Left/right audio.....	Analogue audio output
Power adapter input.....	100-240V ~ 50/60 Hz
Power adapter output.....	12V DC, 500 mA

Remote control (not included)

Battery.....	V3, CR2025 or equivalent
--------------	--------------------------



Limited warranty

Cambridge Audio warrants this product to be free from defects in materials and workmanship (subject to the terms set forth below). Cambridge Audio will repair or replace (at Cambridge Audio's option) this product or any defective parts in this product. Warranty periods may vary from country to country. If in doubt consult your dealer and ensure that you retain proof of purchase.

To obtain warranty service, please contact the Cambridge Audio authorised dealer from which you purchased this product. If your dealer is not equipped to perform the repair of your Cambridge Audio product, it can be returned by your dealer to Cambridge Audio or an authorised Cambridge Audio service agent. You will need to ship this product in either its original packaging or packaging affording an equal degree of protection.

Proof of purchase in the form of a bill of sale or receipted invoice, which is evidence that this product is within the warranty period, must be presented to obtain warranty service.

This Warranty is invalid if (a) the factory-applied serial number has been altered or removed from this product or (b) this product was not purchased from a Cambridge Audio authorised dealer. You may call Cambridge Audio or your local country Cambridge Audio distributor to confirm that you have an unaltered serial number and/or you purchased from a Cambridge Audio authorised dealer.

This Warranty does not cover cosmetic damage or damage due to acts of God, accident, misuse, abuse, negligence, commercial use, or modification of, or to any part of, the product. This Warranty does not cover damage due to improper operation, maintenance or installation, or attempted repair by anyone other than Cambridge Audio or a Cambridge Audio dealer, or authorised service agent which is authorised to do Cambridge Audio warranty work. Any unauthorised repairs will void this Warranty. This Warranty does not cover products sold AS IS or WITH ALL FAULTS.

REPAIRS OR REPLACEMENTS AS PROVIDED UNDER THIS WARRANTY ARE THE EXCLUSIVE REMEDY OF THE CONSUMER. CAMBRIDGE AUDIO SHALL NOT BE LIABLE FOR ANY INCIDENTAL OR CONSEQUENTIAL DAMAGES FOR BREACH OF ANY EXPRESS OR IMPLIED WARRANTY IN THIS PRODUCT. EXCEPT TO THE EXTENT PROHIBITED BY LAW, THIS WARRANTY IS EXCLUSIVE AND IN LIEU OF ALL OTHER EXPRESS AND IMPLIED WARRANTIES WHATSOEVER INCLUDING, BUT NOT LIMITED TO, THE WARRANTY OF MERCHANTABILITY AND FITNESS FOR A PRACTICAL PURPOSE.

Some countries and US states do not allow the exclusion or limitation of incidental or consequential damages or implied warranties so the above exclusions may not apply to you. This Warranty gives you specific legal rights, and you may have other statutory rights, which vary from state to state or country to country.

Visit www.cambridge-audio.com and register to receive notification of future hardware and software releases.

This guide is designed to make installing and using this product as easy as possible. Information in this document has been carefully checked for accuracy at the time of printing; however, Cambridge Audio's policy is one of continuous improvement, therefore design and specifications are subject to change without prior notice. If you notice any errors please feel free to email us at: support@cambridgeaudio.com

This document contains proprietary information protected by copyright. All rights are reserved. No part of this manual may be reproduced by any mechanical, electronic or other means, in any form, without prior written permission of the manufacturer. All trademarks and registered trademarks are the property of their respective owners.

© Copyright Cambridge Audio Ltd 2007. iPod, Apple, and the Mac logo are trademarks of Apple Computer, Inc., registered in the U.S. and other countries.

Free Manuals Download Website

<http://myh66.com>

<http://usermanuals.us>

<http://www.somanuals.com>

<http://www.4manuals.cc>

<http://www.manual-lib.com>

<http://www.404manual.com>

<http://www.luxmanual.com>

<http://aubethermostatmanual.com>

Golf course search by state

<http://golfingnear.com>

Email search by domain

<http://emailbydomain.com>

Auto manuals search

<http://auto.somanuals.com>

TV manuals search

<http://tv.somanuals.com>