

Wireless Adapter YW-2L

取扱説明書

本書はお読みになった後も大切に保管してください。

日本語

User's Guide

Be sure to keep all user documentation handy for future reference.

English

Bedienungsanleitung

Bitte bewahren Sie die gesamte Benutzerdokumentation für späteres Nachschlagen auf.

Deutsch

Mode d'emploi

Conservez la documentation à portée de main pour toute référence future.

Français

Guía del usuario

Asegúrese de tener a mano toda la documentación del usuario para futuras consultas.

Español

Guida dell'utente

Conservare l'intera documentazione dell'utente a portata di mano per riferimenti futuri.

Italiano

Instruktionshäfte

Förvara all användardokumentation nära till hands för framtida referens.

Svenska

用戶說明書

請務必將所有用戶文件妥善保管以便日後需要時查閱。

中文（繁）

사용설명서

만약을 대비하여 사용설명서 등은 소중히 보관해 주십시오.

한국어

※この装置は、情報処理装置等電波障害自主規制協議会(VCCI)の基準に基づくクラスBの情報技術装置です。この装置は、家庭環境で使用することを目的としていますが、この装置がラジオやテレビジョン受信機に近接して使用されると、受信障害を引き起こすことがあります。取扱説明書に従って正しい取り扱いをしてください。

B급 기기 (가정용 정보통신기기)

이 기기는 가정용으로 전자파적합등록을 한 기기로서 주거지역에서는 물론 모든 지역에서 사용할 수 있습니다.

“Class B” Equipment (Household purpose info/telecommunications equipment)

As this equipment has undergone EMC registration for household purpose, this product can be used in any area including residential area.

Introduction

Thank you for purchasing this product. Before using the product, be sure to read these Operating Precautions and ensure that you always use the product correctly. Be sure to keep all user documentation handy for future reference.

Important!

- This wireless adapter is intended for connection to a CASIO Data Projector only. Do not connect it to a computer.
- To establish a wireless LAN connection between the Data Projector and a computer, you need to install Wireless Connection 2 on the computer from the bundled CD-ROM. For details about installation, see page 3 of this manual. For information about how to use Wireless Connection 2, see the user documentation on the CD-ROM.

- Microsoft, Windows, and Windows Vista are registered trademarks or trademarks of Microsoft Corporation in the United States and other countries.
- Other company and product names may be registered product names or trademarks of their respective owners.

- The contents of this manual are subject to change without notice.
- Copying of this manual, either in part or its entirety is forbidden. You are allowed to use this manual for your own personal use. Any other use is forbidden without the permission of CASIO COMPUTER CO., LTD.
- CASIO COMPUTER CO., LTD. shall not be held liable for any lost profits or claims from third parties arising out of the use of this product or this manual.
- CASIO COMPUTER CO., LTD. shall not be held liable for any loss or lost profits due to loss of data due to malfunction or maintenance of this product, or any other reason.

Unpacking

As you unpack the product, check to make sure that all of the items listed below are present.

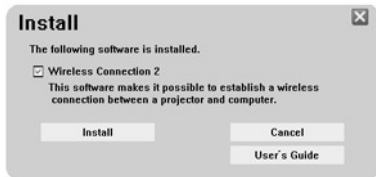
- YW-2 Wireless Adapter
- CD-ROM Disc
- User's Guide (This Manual)
- Warranty

Installing Wireless Connection 2

You need to install Wireless Connection 2 on your computer in order to send shots of your computer screen to and project them with the projector over a wireless connection. For more information about the Wireless Connection 2 operating environment, see the user documentation on the bundled CD-ROM.

To install Wireless Connection 2

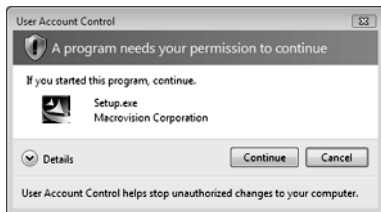
1. Place the bundled CD-ROM into your computer's CD-ROM drive.



2. On the menu that appears, click the [Install] button.
 - This will start installation. Follow the instructions on the dialog boxes that appear on your screen. Note the following points, which apply to each of the noted operating systems.

Windows Vista

If the dialog box shown below appears, click the [Continue] button.



Windows XP

If the dialog box shown below appears, click the [Continue Anyway] button.



Windows 2000

If the message “The software you are about to install does not contain a Microsoft digital signature.” appears, click the [Yes] button.

Viewing the PDF User Documentation on the CD-ROM

The bundled CD-ROM contains a User's Guide in PDF file format. Your computer will need to have Adobe® Reader® installed in order for you to view the User's Guide file.

To view the PDF Format user documentation




- 1. Place the bundled CD-ROM into your computer's CD-ROM drive.**
- 2. On the menu that appears, click the [User's Guide] button.**
 - This will access the user documentation folder.
- 3. Double-click “UsersGuide_English.pdf”.**
 - This starts up Adobe Reader and displays the contents of the User's Guide.
 - On some systems, the “.pdf” extension may not appear at the end of the file name.

Safety Precautions

Be sure to read these “Safety Precautions” before trying to use this product.

About safety symbols

Various symbols are used in this manual and on the product itself to ensure safe use, and to protect you and others against the risk of injury and against material damage. The meaning of each of the symbols is explained below.

 Danger	This symbol indicates information that, if ignored or applied incorrectly, creates the risk of death or serious personal injury.
 Warning	This symbol indicates information that, if ignored or applied incorrectly, could possibly create the risk of death or serious personal injury.
 Caution	This symbol indicates information that, if ignored or applied incorrectly, could possibly create the risk of personal injury or material damage.

Icon Examples



A triangle indicates a situation against which you need to exercise caution. The example shown here indicates you should take precaution against electric shock.



A circle with a line through it indicates information about an action that you should not perform. The specific action is indicated by the figure inside the circle. The example shown here means disassembly is prohibited.



A black circle indicates information about an action that you must perform. The specific action is indicated by the figure inside the circle. The example shown here indicates you must unplug the power cord from the power outlet.



Warning

● **Smoke, odor, heat, noise, and other abnormalities**



Should you ever notice smoke, strange odor, or heat being emitted by the product, or any other abnormality, immediately stop using the product. Continued use creates the risk of fire and electric shock. Immediately perform the following steps.

1. Remove the wireless adapters from the projector (or Multifunctional Presentation Kit YP-100) and your computer.
2. Contact your original dealer or authorized CASIO service center.

● **Malfunction**



Never try to use the product while it is malfunctioning. Continued use creates the risk of fire and electric shock. Immediately perform the following steps.

1. Remove the wireless adapters from the projector (or Multifunctional Presentation Kit YP-100) and your computer.
2. Contact your original dealer or authorized CASIO service center.

● **Disassembly and modification**



Never try to take the product apart or modify it in any way. Be sure to leave all internal inspection, adjustment, and repair up to your original dealer or authorized CASIO service center.

- **Disposal by burning**



Never try to dispose of the product by burning it. Doing so can cause an explosion, which creates the risk of fire and personal injury.

- **Never place heavy objects on the product**

Doing so creates the risk of fire and electric shock.

- **Radio waves**



Never use this product inside of an aircraft or medical facility, or in any other location where use of such devices is prohibited. Radio waves can have an effect on the operation of electronic equipment and medical equipment, and cause accidents.



Do not use this product in the vicinity of high-precision electronic instruments or electronic devices that handle weak radio signals. Radio waves can have an effect on the operation of such equipment, and cause accidents.

- If you are using a pace maker or any other electronic medical device, be sure to consult your physician or device manufacturer before using this product.



Caution

- **Keep the product out of the reach of small children.**



Accidental swallowing of the product can interfere with proper breathing and create a life-threatening situation.

Operating Precautions

This product is made of precision components. Failure to observe the following precautions can result in inability to correctly save data and malfunction.

- **Never use or store this product in the following locations. Doing so creates the risk of malfunction of and damage to the product.**
 - Locations subjected to electrostatic charge
 - Locations subjected to temperature extremes
 - Locations where there is extreme moisture
 - Locations subjected to sudden temperature changes
 - Locations where there is a lot of dust
 - On a shaky, slanted, or otherwise unstable surface
 - Locations where there is the danger of getting wet
- **Avoid using this product under the following conditions. Such conditions create the risk of malfunction of and damage to the product.**
 - Avoid areas subject to temperature extremes (operating temperature range is 5°C to 35°C (41°F to 95°F)).
 - Never insert or allow foreign objects to drop into the product.
 - Never place a vase or any other container of water on top of the product.

- **Clean with a soft, dry cloth.**

When very dirty, use a soft cloth that has been dampened in a weak solution of water and a mild neutral detergent. Wring all excess water from the cloth before wiping.

Never use thinner, benzene, or any other volatile agent to clean the product. Doing so can remove its markings and cause staining of the case.

- **Connectors**

- Whenever transporting or storing the product, attach the supplied cap to protect the connectors against damage.

- Never touch the connectors or allow any foreign objects to be inserted into them. Doing so creates the risk of malfunction.

FCC Information

This device, IEEE 802.11g Wireless LAN USB Adapter, complies with Part 15 of the FCC Rules. Operation is subject to the following two conditions: (1) this device may not cause harmful interference, and (2) this device must accept any interference received; including interference that may cause undesired operation.

Federal Communications Commission (FCC) Statement

This Equipment has been tested and found to comply with the limits for a Class B digital device, pursuant to Part 15 of the FCC rules. These limits are designed to provide reasonable protection against harmful interference in a residential installation. This equipment generates, uses and can radiate radio frequency energy and, if not installed and used in accordance with the instructions, may cause harmful interference to radio communications. However, there is no guarantee that interference will not occur in a particular installation. If this equipment does cause harmful interference to radio or television reception, which can be determined by turning the equipment off and on, the user is encouraged to try to correct the interference by one or more of the following measures:

- Reorient or relocate the receiving antenna.
- Increase the separation between the equipment and receiver.
- Connect the equipment into an outlet on a circuit different from that to which the receiver is connected.
- Consult the dealer or an experienced radio/TV technician for help.

Warning: Changes or modifications to this unit not expressly approved by the party responsible for compliance could void the user authority to operate the equipment.

Tested to comply with FCC standard. FOR HOME OR OFFICE USE.



FCC RF Radiation Exposure Statement:

1. This equipment complies with FCC RF radiation exposure limits set forth for an uncontrolled environment, under 47 CFR 2.1093 paragraph (d)(2).
2. This Transmitter must not be co-located or operating in conjunction with any other antenna or transmitter.

The **IEEE 802.11g Wireless LAN USB Adapter** has been tested to the FCC exposure requirements (Specific Absorbtion Rate).



Manufacturer:

CASIO COMPUTER CO.,LTD.

6-2, Hon-machi 1-chome, Shibuya-ku, Tokyo 151-8543, Japan

Responsible within the European Union:

CASIO EUROPE GmbH

Bornbarch 10, 22848 Norderstedt, Germany

CASIO®

カシオ計算機株式会社

〒151-8543 東京都渋谷区本町1-6-2

CASIO COMPUTER CO.,LTD.

6-2, Hon-machi 1-chome

Shibuya-ku, Tokyo 151-8543, Japan

再生紙を使用しています。

Printed on recycled paper.

Imprimé sur papier recyclé

Gedruckt auf wiederverwertetem Papier.

RJA517023-002V02

Printed in Japan

Imprimé au Japon

MA0708-001001A

Download from Www.Somanuals.com. All Manuals Search And Download.

Free Manuals Download Website

<http://myh66.com>

<http://usermanuals.us>

<http://www.somanuals.com>

<http://www.4manuals.cc>

<http://www.manual-lib.com>

<http://www.404manual.com>

<http://www.luxmanual.com>

<http://aubethermostatmanual.com>

Golf course search by state

<http://golfingnear.com>

Email search by domain

<http://emailbydomain.com>

Auto manuals search

<http://auto.somanuals.com>

TV manuals search

<http://tv.somanuals.com>