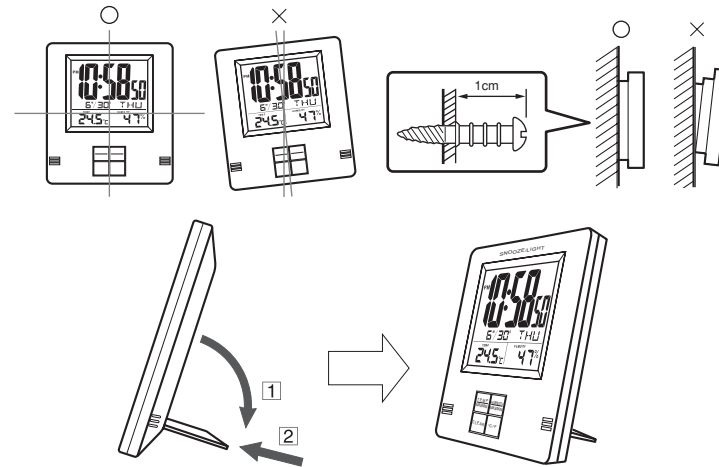
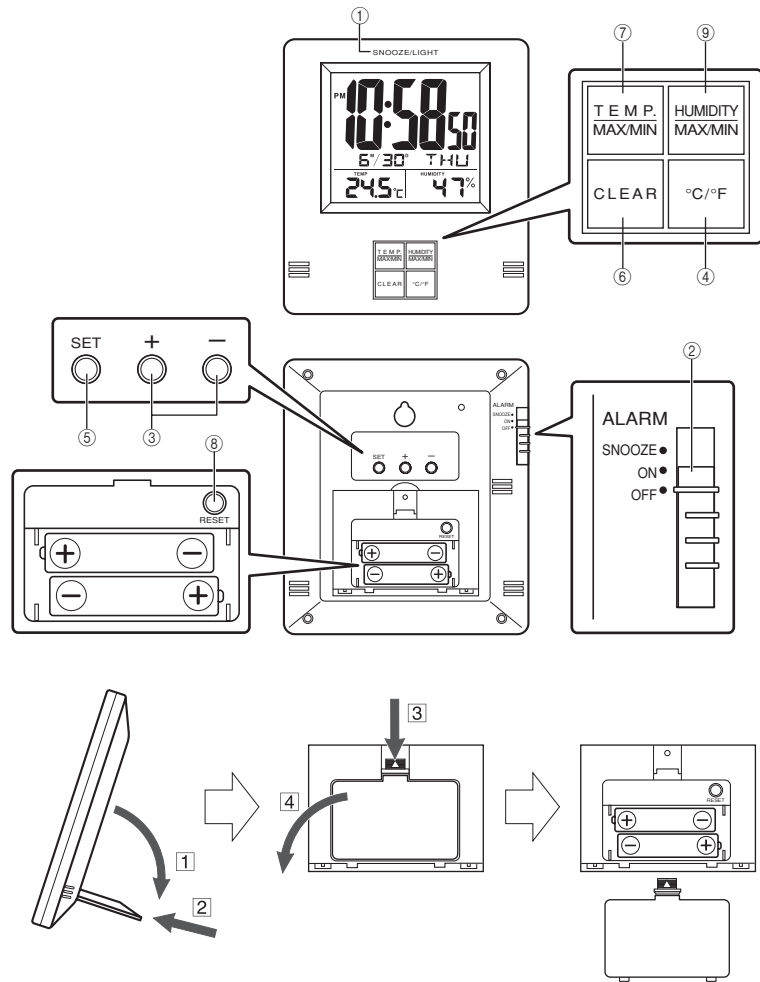
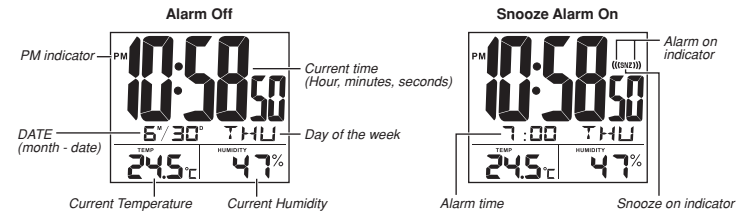


Operation Guide DQ-950

ILLUSTRATION



- A sticker is affixed to the glass of the clock when you purchase it. Be sure to remove the sticker before using the clock.
- Depending on the clock model, the configuration of your clock may differ somewhat from that shown in the illustration.



Operation Guide DQ-950

CASIO®

GENERAL GUIDE

① SNOOZE/LIGHT button

- Press this button to illuminate the display for about four seconds.
- The SNOOZE/LIGHT button is the area at the top of the clock panel marked "SNOOZE/LIGHT".
- Pressing this button while the alarm is sounding stops the alarm.

② Alarm Mode selector

SNOOZE: Snooze alarm on
ON: Alarm on
OFF: Alarm off

③ + (UP) / - (DOWN) buttons

Use these buttons to change the alarm time or the setting that is flashing on the display.

④ °C/°F button

Press this button to toggle the temperature units between Celsius and Fahrenheit.

⑤ SET button

Use this button when setting the current time.

⑥ CLEAR button

Press this button to clear the currently displayed high/low temperature or humidity.

⑦ MAX/MIN TEMP. button

Press this button to display the high and low temperature values.

⑧ RESET button

Press this button to reset the clock after replacing its batteries.

⑨ MAX/MIN HUMIDITY button

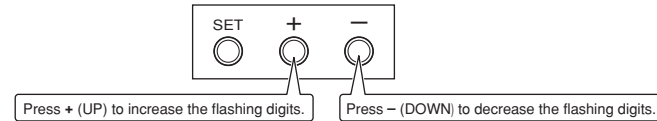
Press this button to display the high and low humidity values.

USING THE CLOCK

1. Press the SET button (⑤) to cycle through the setting screens as shown below.



2. While the screen you want is displayed, use the - (DOWN) and + (UP) buttons (③) to change the flashing digits.



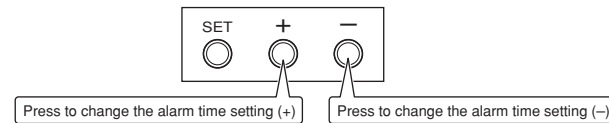
- Holding down + (UP) or - (DOWN) changes the flashing digits at high speed.
 - You can set the year in the range of 2000 to 2039. The day of the week is set automatically in accordance with the date setting.
 - Pressing + (UP) or - (DOWN) while the Time Setting Screen is on the display causes the seconds count to be reset to 00.
 - Each press of + (UP) or - (DOWN) while the 12-hour/24-hour Timekeeping Screen is on the display toggles between 12-hour and 24-hour timekeeping.
3. After making the settings you want, use the SET button (⑤) to display the Normal Timekeeping Screen.
 - The clock automatically returns to the Normal Timekeeping Screen if you leave a setting screen on the display for about three minutes without performing any operation.

USING THE ALARM

The alarm sounds and the light turns on when the alarm time you set is reached. You can also use the Alarm Mode selector (②) to select the snooze alarm feature.

Setting the Alarm Time

Use the - (DOWN) and + (UP) buttons (③) to set the alarm time.
Pressing the - (DOWN) and + (UP) buttons (③) causes the alarm time to appear in place of the date on the display.



- Holding down + (UP) or - (DOWN) changes the digits at high speed.

Turning the Alarm On and Off

Use the Alarm Mode selector (②) on the side of the clock to turn the alarm on and off, and to select the snooze feature.

Alarm Mode selector	Description
SNOOZE (((SNZ)))	The alarm sounds at the preset time for one minute, and seven more times every five minutes thereafter. Even if you stop the alarm by pressing the SNOOZE/LIGHT button (①), the alarm sounds again five minutes later. • The indicator (((SNZ))) flashes on the display to indicate that the snooze feature is activated.
ON ((()))	The alarm sounds at the preset time for one minute.
OFF	The alarm does not sound.

- The alarm time appears in place of the date on the display whenever the Alarm Mode selector (②) is set to ON or SNOOZE.
- The light also turns on for the first four seconds that the alarm sounds.
- The volume of the alarm sound cycles through five levels as it sounds.

Stopping the Alarm

- When alarm is sounding, press the SNOOZE/LIGHT button (①) to stop it. When the snooze feature is turned on, the alarm will sound again in about five minutes.
- To turn off the snooze feature, slide the Alarm Mode selector (②) to OFF.

USING THE LIGHT

Pressing the **SNOOZE/LIGHT** button (1) turns on the light and illuminates the display for easy reading in the dark.

Important!

- Overuse of the light can shorten battery life.

THERMOMETER FUNCTIONS

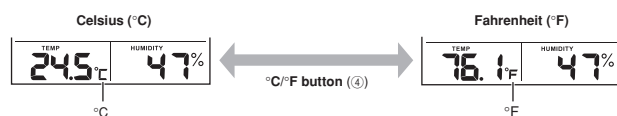
A built-in sensor measures temperature and shows the measured value on the display. The readout from the temperature sensor can also be switched between Celsius (°C) and Fahrenheit (°F).

Temperature Measurements

- The temperature display shows "LO" for temperatures below -50°C (-58°F) and "HI" for temperatures above 70°C (158°F).
- Though temperature readings are displayed up to 0°C (32°F) and greater than 41°C (105°F), note that such readings are actually outside the guaranteed temperature range of this clock.

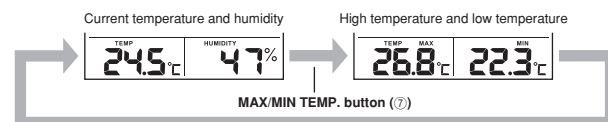
Switching between Celsius and Fahrenheit

- Push the °C/°F button (4) to select either Celsius (°C) or Fahrenheit (°F).

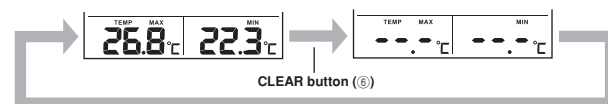


High Temperature and Low Temperature Memory

- The clock remembers the high and low temperatures it measured since the last time its temperature memories were cleared. You can recall these values as shown below.



- To clear the high temperature and low temperature memory, press the **MAX/MIN TEMP.** button (7) to display the current high/low values, and then press the **CLEAR** button (6). Note that the current high/low values are displayed for only about five seconds, and you need to press the **CLEAR** button (6) during that period. New data starts to be stored after memory is cleared.



HYGROMETER FUNCTIONS

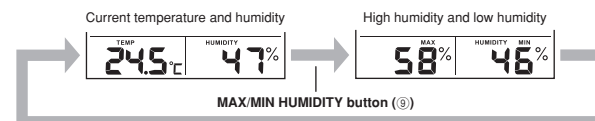
A built-in sensor measures humidity and shows the measured value on the display.

Humidity Measurements

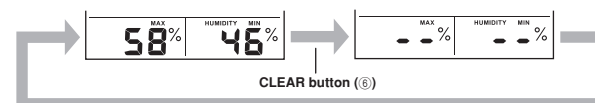
- The humidity display shows "LO" for humidity below 10% and "HI" for humidity above 90%.

High Humidity and Low Humidity Memory

- The clock remembers the high and low humidity values it measured since the last time its humidity memories were cleared. You can recall these values as shown below.



- To clear the high humidity and low humidity memory, press the **MAX/MIN HUMIDITY** button (3) to display the current high/low values, and then press the **CLEAR** button (6). Note that the current high/low values are displayed for only about five seconds, and you need to press the **CLEAR** button (6) during that period.



BATTERY REPLACEMENT

Replace batteries whenever the display of the clock becomes dim and difficult to read.

1. Open the battery compartment cover as shown in the illustration.
2. Remove all of the old batteries.
3. Load a full set of new batteries. Make sure that their positive (+) and negative (-) ends face in the correct directions. If you load batteries incorrectly, they can burst and damage the clock.
4. Press the **RESET** button (8). Be sure to press the **RESET** button (8) after replacing batteries.
5. Replace the battery compartment cover.

Battery precautions

- Keep batteries out of the reach of small children. If a battery is accidentally swallowed, contact your physician immediately.
- Be sure to load the batteries with their positive (+) and negative (-) ends facing correctly.
- Never mix old and new batteries, or batteries of different brands.
- Never charge the batteries that come with the clock.
- Should batteries ever leak while in the clock, wipe out the fluid with a cloth, taking care not to let any get onto your skin.
- Replace the batteries at least once a year, even if the current batteries are working properly.
- The batteries that come with the clock lose some of their power during transport and storage.

Free Manuals Download Website

<http://myh66.com>

<http://usermanuals.us>

<http://www.somanuals.com>

<http://www.4manuals.cc>

<http://www.manual-lib.com>

<http://www.404manual.com>

<http://www.luxmanual.com>

<http://aubethermostatmanual.com>

Golf course search by state

<http://golfingnear.com>

Email search by domain

<http://emailbydomain.com>

Auto manuals search

<http://auto.somanuals.com>

TV manuals search

<http://tv.somanuals.com>