

Digital Audio Player

# Your Pocket Guide

EN



1

Get Connected

2

Transfer Music

3

Plug Your Ears & Enjoy



What' s in the blister?	2
System Requirement	3
Transfer	4
Know Your Player Well	5 - 7
Music Playback	8
Edit Lyrics	9
Repeat Mode & EQ Mode	10
Record & Voice Playback	11
Settings	12 - 13
Technical Data	14
Trouble Shooting	15

What's in the box?

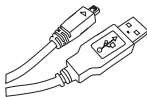
# What's in the blister?



Digital Audio Player



Earphone



USB Cable



CD-ROM containing:  
Media player driver for  
Windows® 98SE



1 x AAA 1.5V Battery



Your Pocket Guide

You' ll need a computer with:

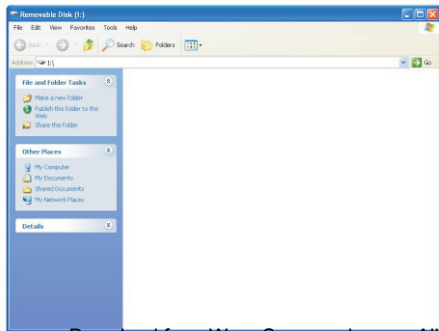


Windows® 98SE/ME/2000/XP  
Pentium Class or faster Processor  
CD-ROM Drive  
64MB RAM  
30MB free hard disk space  
USB Port

For Windows® 98SE users, please install the driver in the CD-ROM before downloading any files to your player.

Download from [www.Somanuals.com](http://www.Somanuals.com). All Manuals Search And Download.

## Get Your Player Connected & Transfer



### Step 1:

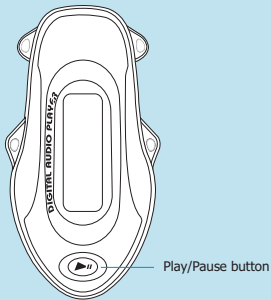
Plug the USB cable to the USB ports of your PC and player. Once the connection is successfully made, the **Removable Disk** window would pop up. Try re-connecting the player if it doesn't appear.

### Step 2:

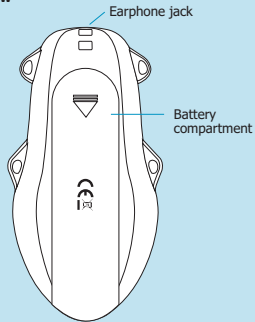
Drag and drop your audio files into the removable disk.  
You can create any folder or directory in the removable disk.  
Close the removable disk window and disconnect the player from your PC after the data transfer.

## Plug Your Ears, and Enjoy

Front View

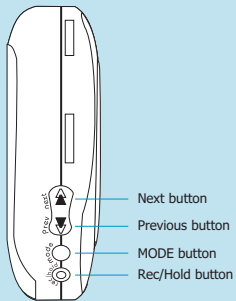


Back View

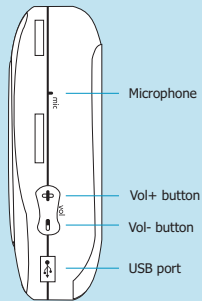


# Know Your Player Well

**Left View**



**Right View**





## Buttons Operation

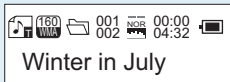
	To	Press
General	Turn On/Off	Hold the Play/Pause button
	Scroll through lists	Previous / Next buttons
	Select option	MODE button
	Return to Main Menu	Hold the MODE button
	Start recording	Rec/Hold button
	Save the recorded file	Hold the Play/Pause button
	Have the device hold / unhold	Hold the Rec/Hold button
Music	Play/Pause songs	Play/Pause button
	Jump to next song	Next button
	Fast forward	Hold the Next button
	Move back to previous song	Previous button
	Fast backward	Hold the Previous button
	Display lyrics	Hold the MODE button for 2 seconds
	Stop lyrics display	MODE button
	Volume up	Vol+ button
	Volume down	Vol- button
	A-B Repeat	Rec/Hold button
Stop A-B Repeat	Play/Pause button	

Have the player hold / unhold:

If you want to have your player locked while enjoying music, you can hold the Rec/Hold button, then all operations on buttons will be invalid.

And you can unlock your player by holding it long again.

## Music Playback



Select **MSC** on the main menu and press the MODE button to enter the music mode, then you can select different songs by pressing the Previous / Next buttons, and press the Play/Pause button to start playing the song you select.

While enjoying music, you can press the Play/Pause button to pause or continue the music; Press the Previous / Next buttons to move back to the previous song or jump to the next song; Hold the Previous / Next buttons to move your song forward or rewind it. If you want to adjust the volume, please press the Vol- / Vol+ buttons.

## Display Lyrics

Many roads are ahead  
of us

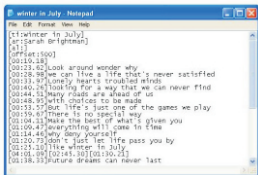


The edited lyrics will be displayed synchronously if you hold the MODE button for 2 seconds while playing music. And you can press the MODE button to quit the lyrics display screen.

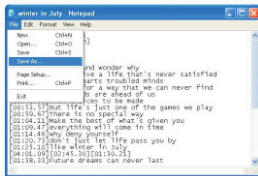
# Edit Lyrics

You can copy the synchronous lyrics from internet, and create a new **Text Document** on your PC, paste them, and then select to save this document in the extension of **.LRC** shown as below.

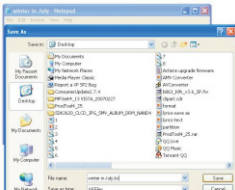
Then put both **.LRC** and **.MP3** (or **.WMA**) files of the same song into the same folder in the removable disk. Your lyrics would be shown when you play that song.



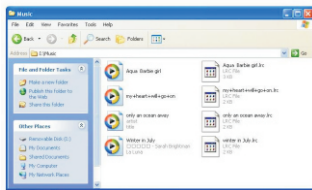
1



2



3



4

### Repeat Mode

#### Procedure:

While playing music, press the MODE button to enter the selection menu screen. Choose **Repeat** and press the MODE button again to enter the **Repeat** menu screen.

You can press the Previous / Next buttons to select your desired repeat mode, and press the MODE button to confirm your setting.

### EQ Mode

#### Procedure:

While playing music, press the MODE button to enter the selection menu screen. Press the Next button to select **Equalizer**, and press the MODE button to enter the **Equalizer** menu screen.

You can press the Previous / Next buttons to select your desired EQ mode, and press the MODE button to confirm your setting.

7 Repeat Modes are available:

Normal, Repeat One, Folder, Repeat Folder, Repeat All, Random, Intro.

#### Normal

All music files will be played one by one and stopped at the last music until you disable this function.

#### Repeat One

The currently played song will be played repeatedly until this function is disabled.

#### Folder

All music in the selected folder would be played once until this function is disabled.

#### Repeat Folder

All music in the selected folder would be played from the beginning to the last one repeatedly until this function is disabled.

#### Repeat All

All music would be played from the beginning to the last one repeatedly until this function is disabled.

#### Random

All music would be played randomly until this function is disabled.

#### Introduce

All music would be played for 10 seconds from the beginning until this function is disabled.

7 EQ Modes are available: Natural, Rock, Pop, Classic, Soft, Jazz, DBB.

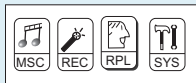
## Voice Recording



Press the Previous / Next buttons to select **REC** on the Main Menu. Then press the MODE button to enter the voice recording mode.

You can press the Play/Pause button to start recording, and save the recorded voice by holding the MODE button.

You can also have a quick access to the Voice Recording Mode: In the STOP mode, press the Rec/Hold button to enter the Voice Recording Mode and start recording.



## Voice Playback

Press the Previous / Next buttons to select **RPL** on the Main Menu. Then press the MODE button to enter the Voice Playback Mode.

You can press the Previous / Next buttons to select a recorded voice file, and then press the Play/Pause button to start voice playing.

If you want to delete the selected voice file, you can press the MODE button to enter the sub-menu. Press the Next button to select **Delete**, and press the MODE button to confirm. Then a dialog box of "**Delete file**" will be shown. Press the Previous / Next buttons to choose **YES**, and press the MODE button to confirm.

## Setting Language

Step 1:

Press the Next button to select **SYS** on the Main Menu, then press the MODE button to enter its sub-menu.

Step 2:

Press the Next button to select **Language**, then press the MODE button to confirm.

Step 3:

You can select your preferred language by pressing the Previous / Next buttons, and then press the MODE button to confirm your setting.

### 12 languages are available:

Simple Chinese	German
English	Italian
Trad Chinese	Dutch
Japanese	Portuguese
Korean	Spanish
French	Polish



## Setting Clock

Step 1: Select **Clock** on the sub-menu of **SYS**, and press the MODE button to enter the clock setting screen.

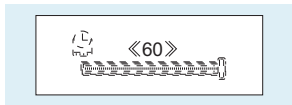
Step 2: You can press the Vol- / Vol+ buttons to move among Year : Month : Day : Hour : Minute : Second. And press the Previous / Next buttons to adjust them.

Step 3: At last, press the MODE button to confirm your setting.

After finishing system settings, press the Next button to look for **Exit** on the sub-menu of **SYS**, and then press the MODE button to quit the SYS screen.

Download from [Www.Somanuals.com](http://www.Somanuals.com). All Manuals Search And Download.

# Auto-Power Off Setup



### Step 1:

Press the Next button to select **Power off** on the sub-menu of **SYS**, and press the MODE button to enter its sub-menu. Select **Off time**, and press the MODE button to confirm.

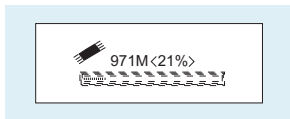
### Step 2:

You can adjust the off time by pressing the Previous / Next buttons, and then press the MODE button to confirm your setting.

In the IDLE mode (no button is pressed), the player will be turned off automatically based on the duration you set.

You may set it as "0" to disable this function.

# Checking Memory Status



Press the Next button to select **Memory info** on the sub-menu of **SYS**, and press the MODE button to confirm.

Then the used memory status can be shown.

## General Information

Power Supply	1 x AAA 1.5V Battery
Dimensions	40mm x 76mm x 24mm
Weight	29g
Display	LCD with backlight
Capacity	128MB/256MB/512MB/1GB/2GB internal flash memory
Operating System	Windows® 98SE/ME/2000/XP
Interface	USB 2.0 Full Speed

## Voice Recording

Supported File Types	.ACT and .WAV files
----------------------	---------------------

## Audio Playback

Compression Formats	.M P3 (8kbps ~ 320kbps) .WMA (5kbps ~ 384kbps)
S/N ratio	85dB
Earphone Output Power	9mWx, 32ohm
THD+N	<0.6
Crosstalk	>50dB



# What should I do if ...

Q: I cannot enter the MUSIC mode after using the player for a period of time.

A: You should format the memory of the player under connection to PC.

(Be sure you remember to backup the data in your player before performing the above action.)

# Disposal of your old product

Electrical and electronic equipment (EEE) contains materials, parts and substances which can be dangerous to the environment and harmful to human health if wastes of electrical and electronic equipment (WEEE) are not disposed correctly.

Equipments which are marked with the WEEE logo (as shown on the right), should not be thrown away with your household waste. Contact your local Authority Waste Disposal Department as they will be able to provide details of the recycling options available in your area.





## Free Manuals Download Website

<http://myh66.com>

<http://usermanuals.us>

<http://www.somanuals.com>

<http://www.4manuals.cc>

<http://www.manual-lib.com>

<http://www.404manual.com>

<http://www.luxmanual.com>

<http://aubethermostatmanual.com>

Golf course search by state

<http://golfingnear.com>

Email search by domain

<http://emailbydomain.com>

Auto manuals search

<http://auto.somanuals.com>

TV manuals search

<http://tv.somanuals.com>