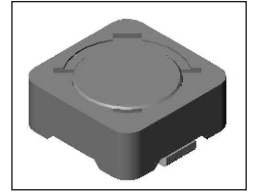


SMT Power Inductor

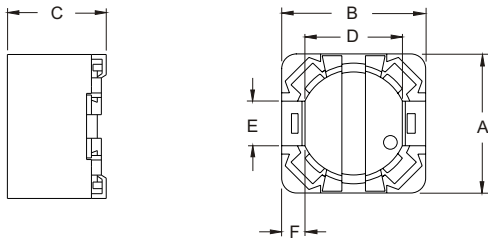
SIQ74 Type

Features

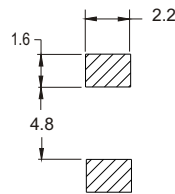
- RoHS compliant.
 - Magnetically shielded.
 - Ideal for power source circuits, DC-DC converter, DC-AC inverters inductor applications.
- In addition to the standard versions shown here, customized inductors are available to meet your exact requirements.



Mechanical Dimension:



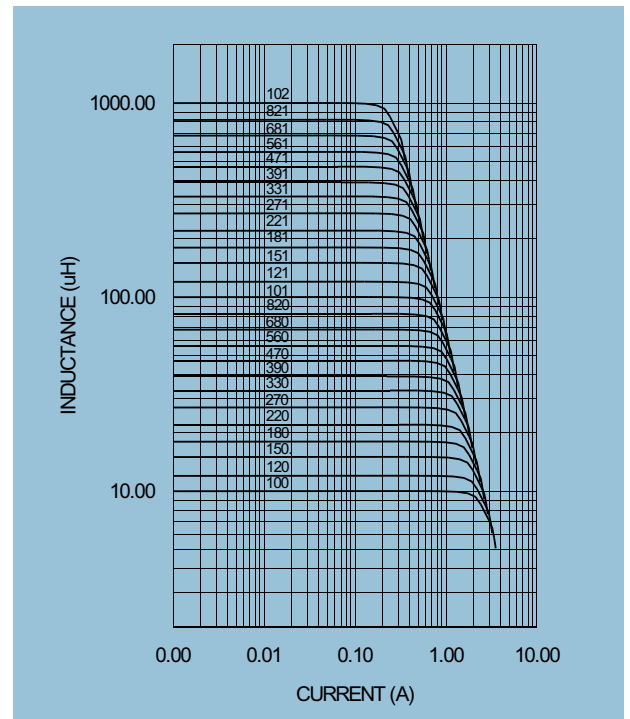
RECOMMENDED PAD PATTERNS



UNIT:mm/inch
 A = 7.3±0.2 / 0.287±0.008
 B = 7.3±0.2 / 0.287±0.008
 C = 4.5 / 0.177 Max.
 D = 5.0±0.2 / 0.197±0.008
 E = 2.0±0.2 / 0.079±0.008
 F = 1.1±0.2 / 0.043±0.008

Electrical Characteristics: 25°C, 100KHz, 0.1V for 1.2~6.8uH. 1KHz,1V for 10~1000uH.

PART NO.	L ¹ (uH)	DCR (Ω) MAX	I _{rated} ² (A dc)
SIQ74 - 1R2	1.2	0.0084	6.40
SIQ74B - 1R5	1.5	0.0160	7.00
SIQ74 - 2R2	2.2	0.0250	4.30
SIQ74B - 2R2	2.2	0.0190	6.50
SIQ74 - 3R3	3.3	0.0270	4.00
SIQ74B - 3R3	3.3	0.0290	5.20
SIQ74 - 3R9	3.9	0.0360	3.50
SIQ74A - 3R9	3.9	0.0360	3.50
SIQ74 - 4R7	4.7	0.0400	2.40
SIQ74A - 4R7	4.7	0.0400	3.50
SIQ74B - 5R0	5.0	0.0450	4.00
SIQ74B - 6R8	6.8	0.0620	3.60
SIQ74 - 6R8	6.8	0.0450	2.20
SIQ74B - 8R2	8.2	0.0810	3.30
SIQ74 - 100	10.0	0.0490	1.84
SIQ74B - 100	10.0	0.0660	2.50
SIQ74 - 120	12.0	0.0580	1.71
SIQ74 - 150	15.0	0.0810	1.47
SIQ74 - 180	18.0	0.0910	1.31
SIQ74 - 220	22.0	0.1100	1.23
SIQ74 - 270	27.0	0.1500	1.12
SIQ74 - 330	33.0	0.1700	0.96
SIQ74B - 330	33.0	0.2200	1.30
SIQ74 - 390	39.0	0.2300	0.91
SIQ74 - 470	47.0	0.2600	0.88
SIQ74 - 560	56.0	0.3500	0.75
SIQ74 - 680	68.0	0.3800	0.69
SIQ74 - 820	82.0	0.4300	0.61
SIQ74 - 101	100.0	0.6100	0.60
SIQ74 - 121	120.0	0.6600	0.52
SIQ74 - 151	150.0	0.8800	0.46
SIQ74 - 181	180.0	0.9800	0.42
SIQ74 - 221	220.0	1.1700	0.36
SIQ74 - 271	270.0	1.6400	0.34
SIQ74 - 331	330.0	1.8600	0.32
SIQ74 - 391	390.0	2.8500	0.29
SIQ74 - 471	470.0	3.0100	0.26
SIQ74 - 561	560.0	3.6200	0.23
SIQ74 - 681	680.0	4.6300	0.22
SIQ74 - 821	820.0	5.2000	0.20
SIQ74 - 102	1000.0	6.0000	0.18



1. Tolerance of inductance : ± 20%.
2. I_{rated} is the DC current which cause the inductance drop less than 25% of its nominal inductance without current and the surface temperature of the part increase less than 45°C.
3. Operating temperature: -20°C to 105°C (including self-temperature rise).



DELTA ELECTRONICS, INC.

(TAOYUAN PLANT CPBG) 252, SAN YING ROAD, KUEISAN INDUSTRIAL ZONE, TAOYUAN SHIEN, 333, TAIWAN, R.O.C.
 TEL: 886-3-3591968; FAX: 886-3-3591991
<http://www.deltawww.com>

Free Manuals Download Website

<http://myh66.com>

<http://usermanuals.us>

<http://www.somanuals.com>

<http://www.4manuals.cc>

<http://www.manual-lib.com>

<http://www.404manual.com>

<http://www.luxmanual.com>

<http://aubethermostatmanual.com>

Golf course search by state

<http://golfingnear.com>

Email search by domain

<http://emailbydomain.com>

Auto manuals search

<http://auto.somanuals.com>

TV manuals search

<http://tv.somanuals.com>