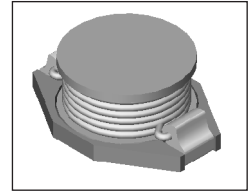


SMT Power Inductor

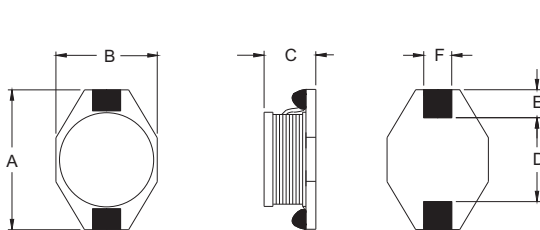
SISH136 Type

Features

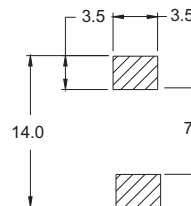
- RoHS compliant.
- Low profile (7.0mm max. Height), high current (8.6A, 1uH) SMD type.
- Unshielded, suitable for high density mounting.
- High energy storage and low DCR.
- Provided with embossed carrier tape packing.
- Ideal for power source circuits, DC-DC converter, DC-AC inverters inductor applications.
- In addition to the standard versions shown here, customized inductors are available to meet your exact requirements.



Mechanical Dimension:



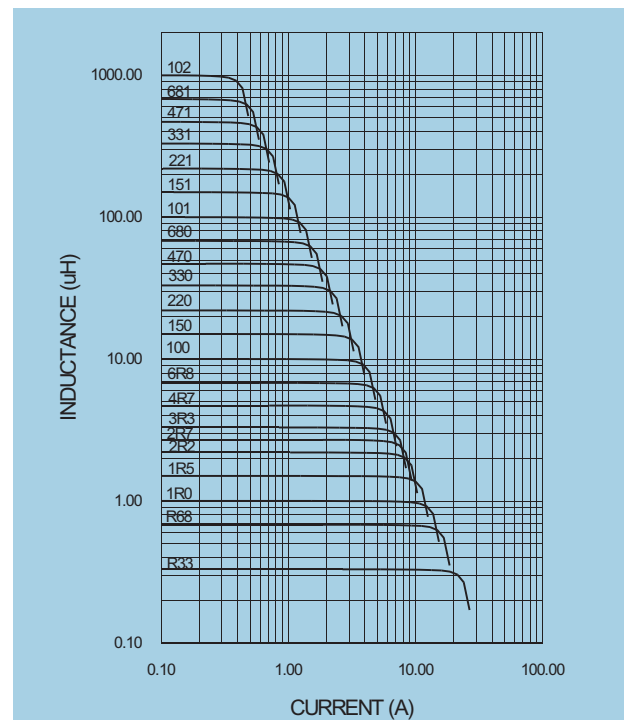
RECOMMENDED PAD PATTERNS



UNIT:mm/inch
 A = 18.5 / 0.728 Max.
 B = 15.2 / 0.598 Max.
 C = 7.1 / 0.280 Max.
 D = 12.7±0.2 / 0.5±0.008
 E = 2.54±0.2 / 0.100±0.008
 F = 2.54±0.2 / 0.100±0.008

Electrical Characteristics: 25°C: 100KHz, 0.1V

PART NO.	L^1 (uH)	DCR (Ω)MAX	$Isat^2$ (A dc)	I_r^3 (A dc)
SISH136 - 1R0	1.0	0.012	20.0	8.60
SISH136 - 2R2	2.2	0.016	16.0	7.10
SISH136 - 3R3	3.3	0.018	14.0	6.20
SISH136 - 5R6	5.6	0.025	12.0	5.30
SISH136 - 100	10.0	0.036	10.0	4.30
SISH136 - 150	15.0	0.041	8.0	4.00
SISH136 - 220	22.0	0.054	7.0	3.50
SISH136 - 330	33.0	0.075	5.5	3.00
SISH136 - 470	47.0	0.100	4.5	2.60
SISH136 - 680	68.0	0.150	3.5	2.30
SISH136 - 101	100.0	0.218	3.0	1.80
SISH136 - 151	150.0	0.287	2.6	1.50
SISH136 - 221	220.0	0.437	2.4	1.20
SISH136 - 331	330.0	0.644	1.9	1.00
SISH136 - 471	470.0	0.977	1.4	0.82
SISH136 - 681	680.0	1.380	1.2	0.72
SISH136 - 102	1000.0	2.070	1.0	0.56



1. Tolerance of inductance: ±20%.
2. $Isat$ is the DC current which cause the inductance drop less than 10% of its nominal inductance without current.
3. I_r is the DC current which cause the surface temperature of the part increase less than 45°C.
4. Operating temperature : -20°C to 105°C (including self-temperature rise)



DELTA ELECTRONICS, INC.

(TAOYUAN PLANT CPBG) 252, SAN YING ROAD, KUEISAN INDUSTRIAL ZONE, TAOYUAN SHIEN, 333, TAIWAN, R.O.C.

TEL: 886-3-3591968; FAX: 886-3-3591991

<http://www.deltawww.com>

Free Manuals Download Website

<http://myh66.com>

<http://usermanuals.us>

<http://www.somanuals.com>

<http://www.4manuals.cc>

<http://www.manual-lib.com>

<http://www.404manual.com>

<http://www.luxmanual.com>

<http://aubethermostatmanual.com>

Golf course search by state

<http://golfingnear.com>

Email search by domain

<http://emailbydomain.com>

Auto manuals search

<http://auto.somanuals.com>

TV manuals search

<http://tv.somanuals.com>