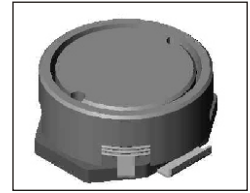


SMT Power Inductor

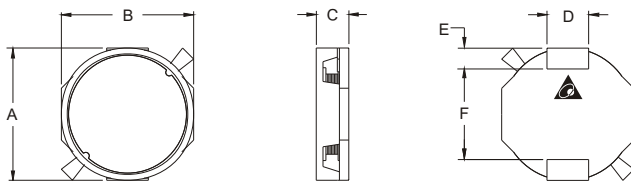
SIWC1365 Type

Features

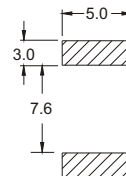
- RoHS compliant.
- Low profile (6.8mm max. height) SMD type.
- Magnetically shielded, suitable for high density mounting
- High energy storage and low DCR.
- Provided with embossed carrier tape packing.
- Ideal for power source circuits, DC-DC converter, DC-AC inverters inductor application.
- In addition to the standard versions shown here, customized inductors are available to meet your exact requirements.



Mechanical Dimension:



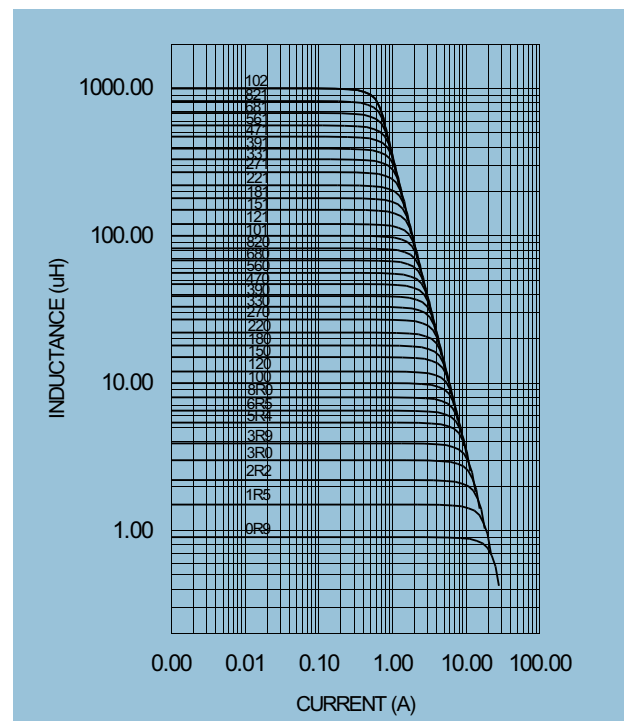
RECOMMENDED PAD PATTERNS



UNIT:mm/inch
 A = 13.0 / 0.512 Max.
 B = 13.0 / 0.512 Max.
 C = 6.5 ± 0.3 / 0.256 ± 0.012
 D = 4.0 / 0.157
 E = 2.0 / 0.079
 F = 8.6 ± 0.1 / 0.339 ± 0.004

Electrical Characteristics: 25°C: 1KHz, 1V

PART NO.	L ¹ (μH)	DCR (Ω)MAX	I _{rated} ² (Adc)
SIWC1365-0R9	0.9	0.010	11.00
SIWC1365-1R5	1.5	0.012	10.00
SIWC1365-2R2	2.2	0.014	9.00
SIWC1365-3R0	3.0	0.016	8.00
SIWC1365-3R9	3.9	0.018	6.50
SIWC1365-5R4	5.4	0.020	6.00
SIWC1365-6R5	6.5	0.021	5.50
SIWC1365-8R0	8.0	0.022	5.00
SIWC1365-100	10.0	0.024	4.80
SIWC1365-120	12.0	0.026	4.60
SIWC1365-150	15.0	0.029	4.20
SIWC1365-180	18.0	0.034	3.70
SIWC1365-220	22.0	0.038	3.50
SIWC1365-270	27.0	0.044	3.20
SIWC1365-330	33.0	0.050	2.80
SIWC1365-390	39.0	0.060	2.60
SIWC1365-470	47.0	0.070	2.40
SIWC1365-560	56.0	0.090	2.20
SIWC1365-680	68.0	0.100	2.00
SIWC1365-820	82.0	0.138	1.80
SIWC1365-101	100.0	0.150	1.60
SIWC1365-121	120.0	0.185	1.40
SIWC1365-151	150.0	0.220	1.30
SIWC1365-181	180.0	0.250	1.10
SIWC1365-221	220.0	0.330	1.00
SIWC1365-271	270.0	0.395	0.95
SIWC1365-331	330.0	0.490	0.90
SIWC1365-391	390.0	0.564	0.80
SIWC1365-471	470.0	0.640	0.75
SIWC1365-561	560.0	0.800	0.68
SIWC1365-681	680.0	0.970	0.60
SIWC1365-821	820.0	1.300	0.55
SIWC1365-102	1000.0	1.500	0.45



1. Tolerance of inductance : ± 20%.
2. I_{rated} is the DC current which cause the inductance drop less than 20% of its nominal inductance without current and the surface temperature of the part increase less than 45°C.
3. Operating temperature: -20°C to 105°C (including self-temperature rise).



DELTA ELECTRONICS, INC.

(TAOYUAN PLANT CPBG) 252, SAN YING ROAD, KUEISAN INDUSTRIAL ZONE, TAOYUAN SHIEN, 333, TAIWAN, R.O.C.

TEL: 886-3-3591968; FAX: 886-3-3591991

http://www.deltawww.com

Free Manuals Download Website

<http://myh66.com>

<http://usermanuals.us>

<http://www.somanuals.com>

<http://www.4manuals.cc>

<http://www.manual-lib.com>

<http://www.404manual.com>

<http://www.luxmanual.com>

<http://aubethermostatmanual.com>

Golf course search by state

<http://golfingnear.com>

Email search by domain

<http://emailbydomain.com>

Auto manuals search

<http://auto.somanuals.com>

TV manuals search

<http://tv.somanuals.com>