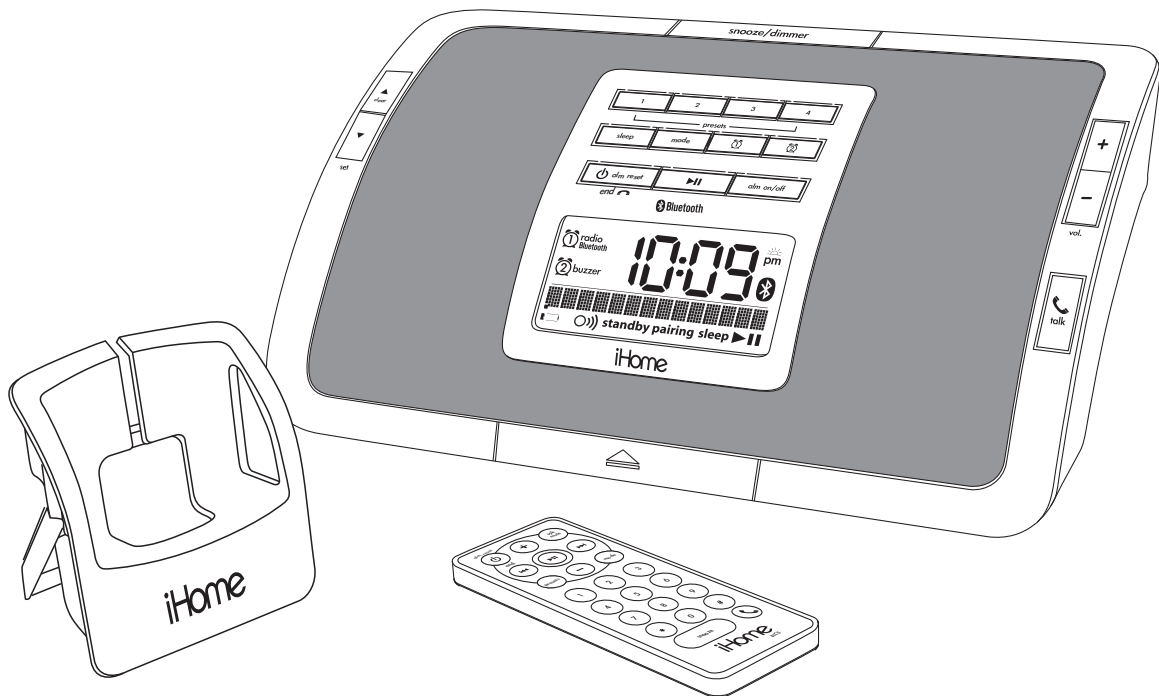


iHome™

Model iHC5
**The Home System
For Your Bluetooth Device®**



Questions? Visit www.ihomeaudio.com

Table of Contents

iHC5 Quick Start	1
Controls and Indicators	2
Setting Up and Using the iHC5	3-6
Replacing Clock Backup Battery	7
Replacing the Remote Control Battery	7
Remote Control	8
A Consumer Guide to Product Safety	9
Trouble Shooting	10-13
Warranty	14



NOTE : The iHC5 is designed for use with Bluetooth wireless devices compatible with the **HFP**, **HSP**, **A2DP** and **AVRCP** streaming audio profiles. Refer to your Bluetooth device's user manual or technical support to determine if your Bluetooth device supports these profiles.

Maintenance

- Place the unit on a level surface away from sources of direct sunlight or excessive heat.
- Protect your furniture when placing your unit on a natural wood and lacquered finish. A cloth or other protective material should be placed between it and the furniture.
- Clean your unit with a soft cloth moistened only with mild soap and water. Stronger cleaning agents, such as Benzine, thinner or similar materials can damage the surface of the unit.

FCC Information

This device complies with part 15 of the Federal Communications Commission Rules. Operation is subject to the condition that this device does not cause harmful interference.

This equipment complies with the limits for a Class B digital device as specified in Part 15 of FCC Rules. These limits provide reasonable protection against radio and TV interference in a residential area.

However, your equipment might cause TV or radio interference even when it is operating properly. To eliminate interference you can try one or more of the following corrective measures:

- Reorient or relocate the receiving antenna.
- Increase the distance between the equipment and the radio or TV.
- Use outlets on different electrical circuits for the equipment and the radio or TV.

Consult your dealer or an experienced radio/television technician if the problem still exists.

Modifying or tampering with your system's internal components can cause a malfunction and might invalidate the system's warranty and void your FCC authorization to operate it.

To comply with FCC RF exposure requirement, this device and its antenna must not be co-located or operating in the conjunction with any other antenna or transmitter.

Getting Started

Thank you for purchasing the iHC5. Designed specifically to play Bluetooth audio wirelessly from your mobile phone, computer or other device via Bluetooth (or with wires via line-in cord), this system provides high quality audio performance that brings out the best in your music and lets you wake or sleep to it. Please read this manual carefully before operating the iHC5 and keep it for future reference.

PACKAGE CONTENTS

2 audio patch cords

1 device cradle

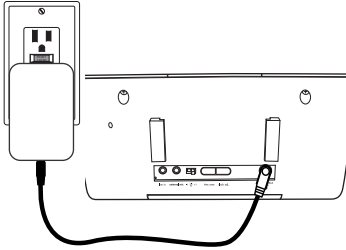
1 remote control (1 CR2302 battery pre-installed)

1 iHC5 main unit (3 x 1.5V "AA" DC 4.5V alkaline batteries pre-installed)

1 AC adaptor

iHC5 Quick Start

1: Power



Attach AC adaptor cable to jack on back of the iHC5 and plug the other end into a wall socket

2: Pair Your Bluetooth-enabled Phone With The iHC5



- Select Bluetooth/discover mode on your phone (see your user manual)
- Press the Power button on the iHC5. The unit will enter Auto-pairing mode and begin searching for a device to pair with, indicated by flashing Bluetooth and pairing icons.
- When prompted, enter pass code for iHC5 on your device: **1234**
- A screen (on phone) should confirm successful pairing.

3: Making And Answering Calls

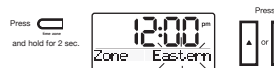


a) To dial, open the keypad on front of the unit. Dial the number then press the Talk Button.

b) To answer the phone, press the Talk Button. Press the End Button to end the call.

NOTE: If you have call waiting, press the Talk Button to answer a second call and place the first on hold.

4: Setting the Time Zone



Time is preset to Eastern Standard Time. Press the Time Zone button until the display flashes. Press UP or DOWN buttons to set your Time zone. Press the Time Zone button again to confirm. To adjust clock, press Clock Adjust button then UP or DOWN button to set.

5: Setting Alarms



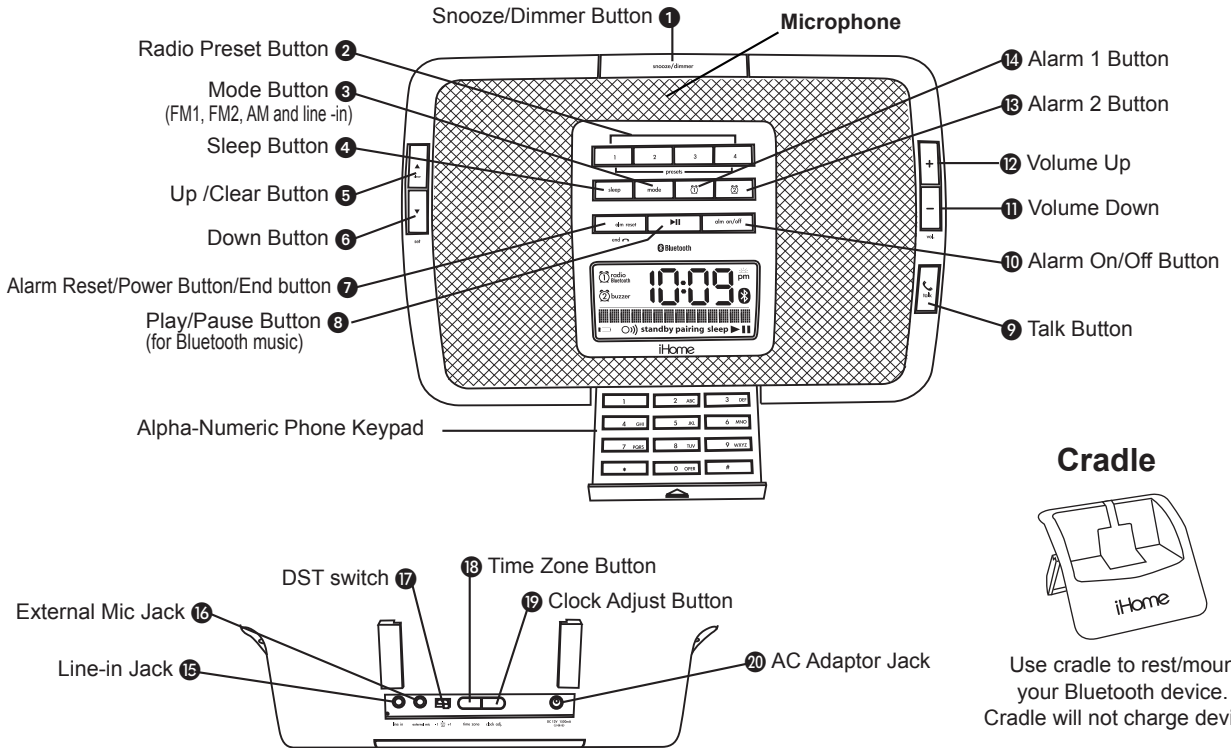
Press and hold Alarm 1 Button until display flashes. Press UP or DOWN button to set alarm time. Press Play Button to wake to Bluetooth phone, or Mode Button to wake to radio. Set alarm time with Alarm 2 Button to wake to buzzer.

6: Radio/line-in



Press the Mode button as needed to select AM, FM1 or FM2 band (or line-in). Press UP or DOWN button to tune to desired station. Press and hold a preset button to set current station as a preset.

Controls and Indicators

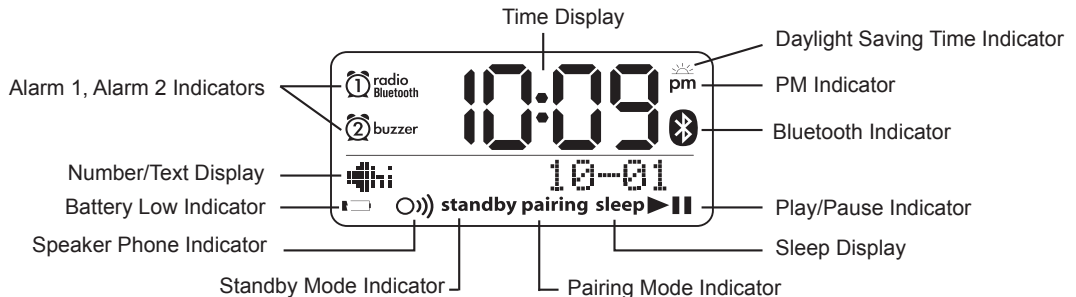


Cradle



Use cradle to rest/mount your Bluetooth device. Cradle will not charge devices

iHC5 Display



Connect iHC5 to Power Source

- a) Plug the AC adaptor cable into the AC adaptor jack and the other end into a standard 120 VAC wall socket. Adaptor must be plugged in to operate. The iHC5 does not operate on batteries.

Setting the Clock

- a) Press and hold the **Time Zone Button 18** until the display flashes.
- b) Press the **5 Up or Down 6 Button** to select your time zone. The clock will display the current time in your time zone.
- c) Press the **Time Zone Button 18** again.
- d) To adjust the time for Daylight Saving time, slide the **17 DST switch** to +1 to advance the time 1 hour. Slide to -1 to turn the clock back 1 hour.

To Set Clock Manually

- a) Press and hold the **Clock Adj Button 19** located on the back of the unit. The clock display will flash.
- b) Press the **5 Up or Down 6 Button** until the current time is displayed (a PM indicator appears when time is set to PM; there is no AM indicator).
- c) Press the **Clock Adj Button 19** to accept the time. The year display will flash.
- d) Press the **5 Up or Down 6 Button** to adjust the year and press the Clock Adjust Button. The date display will flash.
- e) Press the **5 Up or Down 6 Button** to adjust the date and press the Clock Adjust Button. Two beeps will indicate clock setting is complete. Use the DST switch to adjust for Daylight Saving Time.

Using the Alarms

Setting the Alarms

- a) Press and hold the **Alarm 1 Button 14** until the alarm time flashes to wake to Bluetooth device or radio or the **Alarm 2 Button 13** to wake to buzzer at a separate alarm time.
- b) Press the **5 Up or Down 6 Button** to set the alarm time (a PM indicator appears when time is set to PM; there is no AM indicator).
- c) **To wake to radio**, press the **Mode Button 3** to select your radio band, then press **5 Up or Down 6 Button** to tune to the desired station or press P1 to P4 for a preset station.
- d) **To wake to Bluetooth device**, press the **Play/Pause Button 8**.
Note: Bluetooth device audio mode must be playing and Bluetooth device must be charging in order to wake to Bluetooth device. Depending on the Bluetooth device you are using, iHC5 may not be able to make your Bluetooth device play. If this occurs, the buzzer alarm will sound instead.
- e) Press the **Alarm 1 Button 14** again (or the Alarm 2 button if you are setting second alarm). Alarm is now armed, indicated by the numbered alarm clock icon (Alarm 1 for Bluetooth or radio and Alarm 2 for buzzer).

Reviewing, Arming and Disarming Alarms (Turn Alarm Function On and Off)

- a) Press and **Alarm 1 14 (or Alarm 2 13) Button** once. The iHC5 will show the current alarm time for alarm time review.
- b) Press the **Alarm On/Off Button 10** to arm or disarm the alarms. When an alarm is armed, the related alarm icon appears in the display.

Using the iHC5

Resetting the Alarm to Come on the Next Day

- a) When the alarm is sounding, press the **Alarm Reset/Power/End Button 7** to stop the alarm and reset it to come on the following day.

Snooze

- a) Press the **Snooze/Dimmer Button 1** after the alarm sounds. The alarm will be silenced and come on again about 9 minutes later. Snooze can be pressed several times during the 1 hour alarm cycle.

Sure Alarm

The iHC5 has a sure alarm feature. If the backup batteries are installed, the buzzer alarm will still sound in the event of a power failure.

Listening to Radio

Setting up the Antennas

- a) An internal AM antenna is built into the unit; rotate the unit as needed for best AM reception.
- b) Extend the wire FM antenna fully for best reception. Do not strip, alter or attach to other antennas.

Tuning and Playing the Radio

- a) Press the **Mode Button 3** to select AM, FM1 or FM2 radio band.
- b) Press **5 Up** or **Down 6 Button** to tune the radio to a desired station in the selected band.
- c) To memorize the current station as a preset, press and hold **Preset Button 2** 1, 2, 3 or 4. Repeat step 1-3 to preset up to 12 stations (4 AM and 8 FM). To listen to a preset station at any time, select the desired band and press the desired **preset button 2**.
- d) Press the **Volume + 12** or **Volume - 11** on main unit or remote control to adjust the system volume.
- e) To turn off the iHC5, press the **Alarm Reset/Power Button/End 7** on the main unit or remote control.

Listening to Bluetooth Music Devices (with A2DP and AVRCP profiles)

Before you can play Bluetooth music through the iHC5, you need to pair and link your Bluetooth device with the iHC5.

Pairing and Linking your Bluetooth Device with the iHC5:

- a) Make sure your Bluetooth device is fully charged
- b) Power Up your Bluetooth device and connect your iHC5 to AC adaptor.
- c) Turn on Bluetooth functionality on your Bluetooth device. Typically, Bluetooth controls are found on the device's tools or settings menu (see your user manual). Turn on Bluetooth connectivity.
- d) Press the Power button on the iHC5 to put it in pairing mode. The Bluetooth icon and "pairing" icon on the iHC5 will flash.
- e) Choose "add a new Bluetooth device" on your device. It will start to search. If the pairing attempt fails or "times out", press and hold the Play button on the iHC5 for 4 seconds to restart the process, and repeat "add a new Bluetooth device" on your Bluetooth device.
- f) After your device and the iHC5 have discovered each other, you will be asked to enter a passcode on your Bluetooth device. **The passcode for the iHC5 is: 1234**
- g) A "Pairing Successful" or similar message should appear on your device and the Bluetooth icon on the iHC5 should stop flashing, followed by a confirmation beep.
- h) Pairing will remain intact even if either or both devices are powered off or are taken out of link range (~30 feet). However, the active link between the devices will be lost and need to be re-established.
- i) To re-establish a link, select **iHC5** from the Bluetooth devices menu on your Bluetooth device and press the Talk or Play button on the iHC5 or Remote Control.

Playing Bluetooth Music:

- a) Once your device and the iHC5 are paired and linked, you can start to play Bluetooth music through the iHC5.
- b) Initiate music playing on your Bluetooth device.
- c) Press the **Play/Pause Button 8** on the iHC5 or remote control to play your Bluetooth device. The iHC5 display will show "Bluetooth" and the Play icon.
- d) Press the **Play/Pause Button 8** again to pause play; press again to resume it.
- e) Use the **Volume + 12** or **Volume - 11** buttons on the main unit or remote control to adjust the system volume.
- f) Press **5 Up** or **Down 6 Button** on the main unit or remote control to go to the next or previous track.
- g) To turn off the iHC5, press the **Alarm Reset/Power/End Button 7** on the main unit or remote control. Please remember to turn off your Bluetooth device manually.

Listening to other portable audio devices

If you are using an iPod, MP3 player or other portable audio device, you can play it through the iHC5 via the Line-in Jack.

- a) Plug one end of the audio patch cord (included) into the headphone or line-out jack on your device and the other end of the patch cord into the iHC5 Line-in Jack, located on the back of the unit.
- b) Press the **Mode Button 3** until "LINE-IN" appears on the bottom of the display, indicating Line-in playing mode.
- c) Turn on and play your device.
- d) Use the **Volume + 12** or **Volume - 11** on the main unit or remote control to adjust the system volume. You may need to adjust your device volume, too.
- e) To turn off the iHC5, press the **Alarm Reset/Power/End Button 7** on the main unit or remote control. Please remember to turn off your device, too.

Answering and Making Calls with a Bluetooth Mobile Phone

Before using your phone with the iHC5, make sure your Bluetooth phone is paired and linked with iHC5. See Bluetooth Pairing/Linking section on page 4 for details.

Answering a Call:

- The incoming number will appear on the display. To answer a call, press the **Talk Button 9**. The iHC5 will now function as a speaker phone.
- For best sound performance, speak toward the MIC (within 5 feet) and use the **Volume + 12** or **Volume - 11** button on the main unit or remote control to adjust the system volume.
- Call waiting:** If you have call waiting and receive a second call, the second number will be displayed and the iHC5 will beep. Press the **Talk Button 9** to answer a second call and put the first call on hold.
- To hang up, press the **Alarm Reset/Power/End Button 7**.

Making a Call:

- You can use either the integrated keypad or the remote to dial numbers manually. Enter the desired number then press the **Talk Button 9**. Press the **Clear Button 5** to clear the last digit or press and hold the **Talk Button 9** for 2 seconds to clear all digits.
- To redial the last number dialed, rapidly press the **Talk Button 9** twice.
- To hang up, press the **Alarm Reset/Power/End Button 7**.
Mute Function: press the Mute button on the Remote Control to mute the iHC5 speakers during a conversation. Doing so will not mute the MIC or your bluetooth device (cell phone).

Ringer Level Select:

- To adjust the iHC5 ringer volume, press and hold the **Down Button 6** until you hear a beep. Repeat to adjust ringer levels to Hi, Low or Off. The ring level setting appears on the bottom left of the display.

Sleep Operation

Sleep mode lets you sleep to Bluetooth music or the radio, with a Gentle Sleep feature which gradually lowers the volume until the unit shuts off at the end of sleep time.

- Press the **Sleep Button 4** to enter sleep mode. The Sleep icon will appear on the display to indicate the unit is in sleep mode and will automatically turn off after the selected time.
- To adjust the sleep timer from 120, 90, 60, 30 or 15 minutes, press the **Sleep Button 4** again.
- When the display changes back to show the real time, press the **Sleep Button 4** once to show the sleep time remaining. Pressing it again will change the sleep time to the next lowest setting.
- Sleep mode has independent volume setting so you can adjust the sleep volume without affecting the normal volume. Use the **Volume + 12** or **Volume - 11** on the main unit or remote control to adjust the system volume. The sleep volume will remain at that level the next time you enter sleep mode.
- To stop listening at any time, press the **Alarm Reset/Power Button 7** on main unit or remote control to turn it off.

Dimmer Operation

During normal operation, press the **Snooze/Dimmer Button 1** to control the brightness of the LCD display.

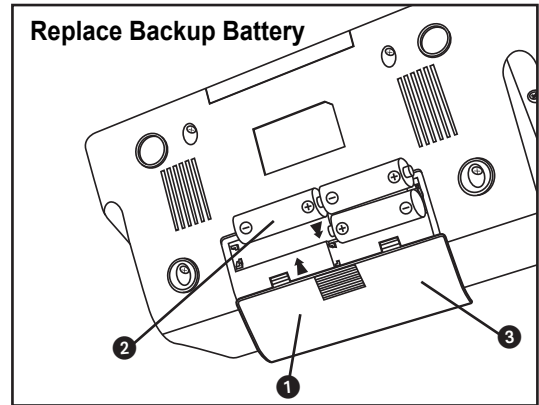
Replacing Clock Backup Battery

The iHC5 uses a backup battery system (3 pre-installed AA batteries) to provide continuous alarm operation and clock settings in the event of a power failure. If the backup battery has been installed and a power failure occurs or the AC cord is accidentally disconnected, the display backlight will not remain lit, but current time and alarm time settings will be temporarily maintained. Otherwise, you must reset the time and alarm settings.

NOTE: Please make sure the AC adaptor is connected. Otherwise all settings may be lost during battery replacement.

1. Open the backup battery compartment door located on the bottom of the unit.
2. Insert 3 AA batteries, checking that the polarity (+ and – ends of the battery) matches the drawing near the battery compartment.
3. Close the compartment door.

Note: Make sure you dispose of batteries properly (see your local regulations).



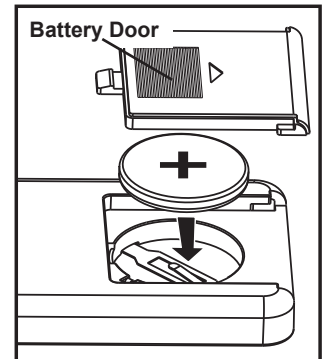
Replacing the Remote Control Battery

The remote control battery is already installed at the factory. When the remote control stops operating or its range seems reduced, it is time to replace the battery.

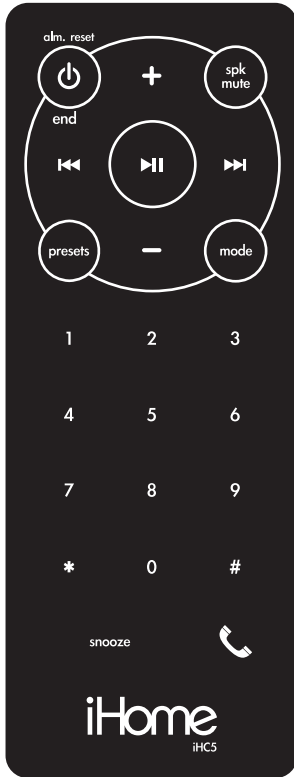
1. The battery door is located on the back end of the remote.
2. Pull the battery door to release the battery door latch.
3. Insert a **CR2032** battery, checking that the + and – sides of the battery match the drawing inside the battery compartment.
4. Replace the battery door into the remote control.

Note: Make sure you dispose of batteries properly (see your local regulations).

For best results, aim remote control towards the remote sensor on the lower left corner of the display.



Remote Control



Pressing POWER/Alarm Reset/End functions as it does on the main unit.



Pressing PLAY/PAUSE functions as it does on the main unit



Pressing VOL. - / + will function as it does on the main unit.



Pressing MUTE will toggle the speaker on & off on your iHC5 (does not mute MIC or your Bluetooth device).
“Mute” will appear on display.
Press any key to exit MUTE.



Pressing FWD/REV functions the same as the Set buttons on the main unit.



Pressing PRESETS button when unit is in either Bluetooth or Radio mode will automatically go to the last accessed Preset Radio Station on last used BAND (AM, FM1, or FM2). Pressing PRESETS again while already listening to a station in Preset memory will go to the next preset station programmed.

Note: you cannot program presets from the remote.



Pressing TALK functions as it does on the main unit



Pressing MODE functions as it does on the main unit.



Pressing SNOOZE functions as it does on the main unit.

IMPORTANT SAFETY INSTRUCTIONS

When used in the directed manner, this unit has been designed and manufactured to assure your personal safety. However, improper use can result in potential electrical shock or fire hazards. Please read all safety and operating instructions carefully before installation and use. Keep these instructions handy for future reference. Take special note, and adhere to all warnings on the unit and in the instruction and service manual.

1. **Water and Moisture** - The unit should not be used near water. For example, near a bathtub, washbowl, kitchen sink, laundry tub, in a wet basement, or near a swimming pool, etc.
2. **Ventilation** - The unit should be situated so that its location or position does not interfere with its proper ventilation. For example, it should not be situated on a bed, sofa, rug, or similar surface that may block the ventilation openings; or placed in a built-in installation, such as bookcase or cabinet that may impede the flow of air through the ventilation openings.
3. **Heat** - The unit should be situated away from heat source such as radiators, heat register, stoves, or other appliances (including amplifiers) that produce heat.
4. **Power Sources** - The unit should be connected to a power supply only of the type described in the operating instructions or as marked on the appliance.
5. **Power Cord Protection** - Power supply cord should be routed so that they are not likely to be walked on or pinched by items placed upon or against them. It is always best to have a clear area from where the cord exits the unit to where it is plugged into an AC outlet.
6. **Cleaning** - The unit should be cleaned only as recommended by the manufacturer.
7. **Object and Liquid Entry** - Care should be taken so that objects do not fall and liquids are not spilled into the enclosure through openings.
8. **Attachments** - Do not use attachments not recommended by the product manufacturer.
9. **Lightning and Power Surge Protection** - Unplug the unit from the wall outlet and disconnect the antenna or cable system during a lightning storm or when it is left unattended and unused for long periods of time. This will prevent damage to the product due to lightning and power-line surges.
10. **Overloading** - Do not overload wall outlets, extension cords, or integral convenience receptacles as this can result in a risk of fire or electric shock.
11. **Damage Requiring Service** - The appliance should be serviced by qualified service personnel when:
 - A. The power-supply cord or plug has been damaged.
 - B. Objects have fallen into or liquid has been spilled into the enclosure.
 - C. The unit has been exposed to rain.
 - D. The unit has been dropped or the enclosure damaged.
 - E. The unit exhibits a marked change in performance or does not operate normally.
12. **Antenna** - Do not connect an external antenna to the unit (other than that provided).
13. **Periods of Nonuse** - If the unit is to be left unused for an extended period of time, such as a month or longer, the power cord should be unplugged and take out batteries from the unit to prevent damage or corrosion.
14. **Servicing** - The user should not attempt to service the unit beyond that described in the user's operating instructions. All other servicing should be referred to qualified service personnel.

Questions? Visit www.ihomeaudio.com

Trouble Shooting

Symptom	Possible Problem	Solution
Unit doesn't respond (no power)	AC adaptor isn't plugged to a wall outlet or the connector is not plugged into the power supply jack on the back of the unit.	Plug the AC adaptor into a wall outlet and plug the connector into the AC jack on the unit
	Wall outlet is not functioning	Plug another device into the same wall outlet to confirm the outlet is working. If the outlet is controlled by a switch, check that the switch is ON.
	Power is off	Press the Power button on the iHC5
Can't play Bluetooth music from cellphone or other Bluetooth devices	Device does not support the A2DP and AVRCP Bluetooth profiles	While you need the A2DP and AVRCP Bluetooth profiles to stream music to the iHC5, you can still use the handsfree speaker phone functionality
	Device and iHC5 are not paired AND linked	Make sure your phone supports the A2DP and AVRCP Bluetooth profiles before linking/pairing
Bluetooth device didn't charge up	iHC5 does not charge other devices	Make sure your device is plugged into a working charger
Sound is distorted	Volume level is set too high	Decrease the volume
	Sound source is distorted	If original sound source is poor quality, distortion and noise are easily noticed with high-power speakers.
		Try setting EQ to flat on your Bluetooth device
Bluetooth music is broken up	Bluetooth device is out of range of iHC5	Move your Bluetooth device within 30 feet of the iHC5
Can't hear caller's voice	Bluetooth device is out of range of iHC5	Move your cell phone closer to iHC5
	Volume on iHC5 is too low	Raise volume on iHC5
Remote Control doesn't work	Batteries are weak/ dead	Replace with new battery
	Remote Control is too far way from main unit	Move the Remote Control closer to main unit
My Bluetooth headset won't pair with the iHC5	Headsets and other receivers will not pair with the iHC5	Pair headset directly with phone or other transmitting device
Others can't hear my voice/voice isn't clear to listener	You are too far from iHC5 microphone	Move within 5 feet of the iHC5
	Audio cord connected to external mic jack, disabling the internal mic	Make sure any external device is connected to the proper input jack
Dialing out error message	Some phones do not support dialing out while listening to Bluetooth music	Check your cell phone owner's manual or website to see if your phone supports dialing out while listening to Bluetooth music. If it does not, turn off music before attempting to dial

Trouble Shooting

Symptom	Possible Problem	Solution
Can't wake to Bluetooth music	Device is not in play mode	Make sure your device is powered and streaming music
	Device is not charged	Make sure your device is adequately charged to last through the set alarm time
	Device does not support A2DP and AVRCP Bluetooth profiles	If your device does not support the A2DP and AVRCP profiles, set your alarm to wake to radio to or buzzer
Calls don't sound clear	Volume on iHC5 is too low	Raise volume on the iHC5
	Poor connection or cell phone reception	Retry call after moving phone for better reception reception/connection

Solución De Problemas

Síntoma	Causa posible	Solución
La unidad no funciona (no circula corriente eléctrica).	El adaptador de AC no está conectado al tomacorriente o el conector no está conectado a la ficha en la parte posterior de la unidad.	Conecte el adaptador de AC a un tomacorriente y el conector a la ficha de salida AC de la unidad.
	El tomacorriente no funciona.	Coloque otro aparato al tomacorriente y confirme su funcionamiento. Si el tomacorriente tuviera un selector de encendido, colóquelo en esa posición.
	La unidad no está encendida.	Oprima el botón "Power" (encendido) del iHC5.
No se escucha la música por el teléfono celular vía Bluetooth o desde otro aparato transmisor.	El aparato no soporta tecnología Bluetooth A2DP ni AVRCP.	Para escuchar música a través del iHC5 se requiere tecnología Bluetooth A2DP o AVRCP, si bien puede seguir utilizando el altoparlante del teléfono celular.
	El aparato y su iHC5 no están ligados y trabajando en conjunto	Asegúrese que su teléfono soporte tecnología Bluetooth A2DP o AVRCP antes de conectarlos.
El aparato Bluetooth no recibe carga.	El iHC5 no carga otros aparatos.	Coloque su aparato en un cargador que funcione.
El sonido sale distorsionado.	El volumen se encuentra muy alto.	Baje el volumen.
	La fuente de sonido está distorsionándolo.	Si el sonido original era de pobre calidad, las distorsiones y ruidos se harán más notables con los parlantes de alta potencia. Intente modificar los ajustes de EQ a plano en su aparato Bluetooth.
La música del aparato Bluetooth sale entrecortada.	Su aparato Bluetooth está fuera del rango de alcance del iHC5.	Mantenga su aparato Bluetooth dentro de los 30 pies de distancia del iHC5.
No se escucha la voz de quién ha llamado.	Su aparato Bluetooth está fuera del rango de alcance del iHC5.	Coloque su teléfono más cerca del iHC5.
	El volumen del iHC5 se encuentra demasiado bajo.	Aumente el volumen del iHC5.
El control remoto no funciona.	Las baterías están gastadas.	Reemplace las baterías por nuevas.
	El control remoto está fuera de rango.	Acerque el control remoto a la unidad.
Mi auricular Bluetooth no se conecta con el iHC5	Algunos receptores y auriculares no pueden conectarse al iHC5.	Conecte el auricular directamente a su teléfono u otro aparato transmisor.
Mi voz no se escucha con claridad o no se escucha en absoluto.	Usted se encuentra muy lejos del micrófono del iHC5.	Manténgase dentro de los 5 pies de distancia del iHC5.
	El cable de audio conectado a la ficha del micrófono externo impide la salida por el micrófono interno.	Asegúrese de que todo aparato externo esté conectado a la ficha de entrada correspondiente.
Mensaje de error al discar	Algunos teléfonos no pueden discar llamados mientras está escuchando música via Bluetooth	Verifique en el manual del usuario o en el sitio de internet de su teléfono celular si su teléfono puede discar mientras está escuchando música via Bluetooth. Si no lo permite, apague la música antes de discar.

Solución De Problemas

Síntoma	Causa posible	Solución
La música con Bluetooth no funciona como despertador.	El aparato no está en modo "Play" (reproducción).	Asegúrese que el aparato esté conectado y transmitiendo música.
	El aparato está descargado.	Asegúrese que el aparato tenga carga suficiente como para durarle hasta la hora programada.
	El aparato no soporta tecnología Bluetooth A2DP y AVRCP.	Si su aparato no soporta tecnología Bluetooth A2DP y AVRCP, coloque su despertador para sonar con alarma o con zumbido.
Las llamadas no se escuchan con claridad.	El volumen del iHC5 está muy bajo.	Aumente el volumen de su iHC5.
	Hay mala recepción celular en ese sector.	Vuelva a intentar la llamada desde otro sector.

Limited 90-Day Warranty Information

iHome Products, a division of SDI Technologies Inc. (hereafter referred to as SDI Technologies), warrants this product to be free from defects in workmanship and materials, under normal use and conditions, for a period of 90 days from the date of original purchase.

Should this product fail to function in a satisfactory manner, it is best to first return it to the store where it was originally purchased. Should this fail to resolve the matter and service still be required by reason of any defect or malfunction during the warranty period, SDI Technologies will repair or, at its discretion, replace this product without charge (except for a \$15.00 charge for handling, packing, return UPS/postage, and insurance). This decision is subject to verification of the defect or malfunction upon delivery of this product to the Factory Service Center listed below. The product must include proof of purchase, including date of purchase. The fee for service without proof of purchase is \$40.00.

Before returning this product for service, please first replace the batteries (if applicable) with fresh ones, as exhausted or defective batteries are the most common cause of problems encountered.

If service is still required:

1. Remove the batteries (if applicable) and pack the unit in a well padded, heavy corrugated box.
2. Enclose a photocopy of your sales receipt, credit card statement, or other proof of the date of purchase, if within the warranty period.
3. Enclose a check or money order payable to the order of SDI Technologies, for the sum of \$15.00 (\$40.00 without proof of purchase).
4. Send the unit prepaid and insured, to the Factory Service Center listed below.

Consumer Repair Department
SDI Technologies Inc.
1330 Goodyear Drive
El Paso, TX 79936-6420

Disclaimer of Warranty

NOTE: This warranty is valid only if the product is used for the purpose for which it was designed. It does not cover (i) products which have been damaged by negligence or willful actions, misuse or accident, or which have been modified or repaired by unauthorized persons; (ii) cracked or broken cabinets, or units damaged by excessive heat; (iii) damage to digital media players, CD's or tape cassettes (if applicable); (iv) the cost of shipping this product to the Factory Service Center and its return to the owner.

This warranty is valid only in the United States of America and does not extend to owners of the product other than to the original purchaser. In no event will SDI Technologies or any of its affiliates, contractors, resellers, their officers, directors, shareholders, members or agents be liable to you or any third party for any consequential or incidental damages, any lost profits, actual, exemplary or punitive damages. (Some states do not allow limitations on implied warranties or exclusion of consequential damages, so these restrictions may not apply to you.) This warranty gives you specific legal rights, and you may also have other rights which vary from state to state.

Your acknowledgement and agreement to fully and completely abide by the above mentioned disclaimer of warranty is contractually binding to you upon your transfer of currency (money order, cashier's check, or credit card) for purchase of your SDI Technologies product.

© 2007 SDI Technologies, Inc. All rights reserved

**Questions? Visit www.ihomeaudio.com
or call 1-800-288-2792 Toll Free**

Free Manuals Download Website

<http://myh66.com>

<http://usermanuals.us>

<http://www.somanuals.com>

<http://www.4manuals.cc>

<http://www.manual-lib.com>

<http://www.404manual.com>

<http://www.luxmanual.com>

<http://aubethermostatmanual.com>

Golf course search by state

<http://golfingnear.com>

Email search by domain

<http://emailbydomain.com>

Auto manuals search

<http://auto.somanuals.com>

TV manuals search

<http://tv.somanuals.com>